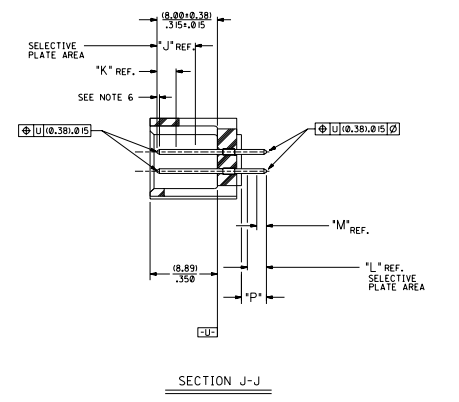
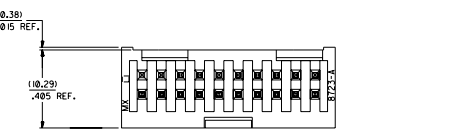
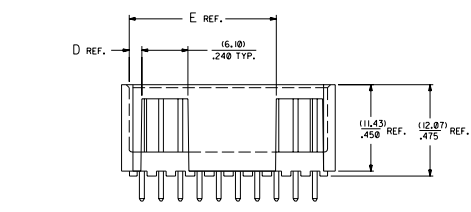
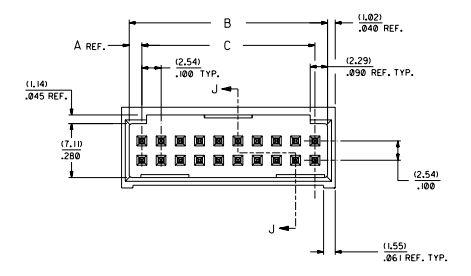
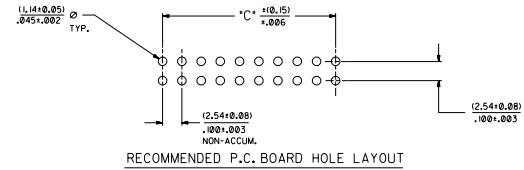
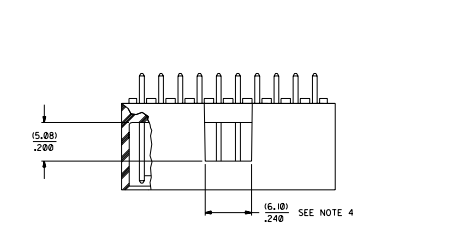


20 19 18 17 16 15 14 13 12 11 10 9 8 7 6 5 4 3 2 1



**NOTES:**

- 20 CIRCUIT SIZE SHOWN FOR ILLUSTRATION PURPOSES.
- PIN PUSHOUT FORCE (17.79 N/4 LBS).
- PINS MUST MEET SOLDERABILITY SPEC. MIL-STD-202 METHOD 208B.
- WINDOW NOT AVAILABLE ON 6 AND 8 CIRCUIT SIZE.
- FOR CHARTED DIMENSIONS AND ASSEMBLY N.O.S NOT SHOWN ON THIS SHEET - SEE SHEET 2.
- ROW TO ROW PIN HEIGHT VARIATION MUST NOT EXCEED (0.13) ± .005 IN.
- PRODUCT CONFORMS TO PS-8723.

**MATERIAL:**

SHROUDED WAFER: GLASS FILLED POLYESTER, 94V-0; COLOR: BLACK.  
PINS: PHOSPHOR BRONZE.  
SEE SHEET 2 FOR FINISHES.

**ASSEMBLY STYLE "A" AND "B"**

CT. I.	DIM. "A"	DIM. "B"	DIM. "C"	DIM. "D"	DIM. "E"
06	(1.68) ± .066	(8.43) ± .312	(5.08) ± .200	(1.68) ± .066	
08	(1.68) ± .066	(10.97) ± .432	(7.62) ± .300	(1.68) ± .066	
10	(1.68) ± .066	(13.51) ± .490	(10.16) ± .400	(1.68) ± .066	
12	(1.68) ± .066	(16.05) ± .550	(12.70) ± .470	(1.68) ± .066	
14	(1.68) ± .066	(18.59) ± .712	(15.24) ± .560	(1.68) ± .066	
16	(1.68) ± .066	(21.13) ± .872	(17.78) ± .650	(1.68) ± .066	
18	(1.68) ± .066	(23.67) ± .1032	(20.32) ± .740	(1.68) ± .066	
20	(1.68) ± .066	(26.21) ± .1232	(22.86) ± .830	(1.68) ± .066	
22	(1.68) ± .066	(28.75) ± .1432	(25.40) ± .920	(1.68) ± .066	
24	(1.68) ± .066	(31.29) ± .1632	(27.94) ± .1010	(1.68) ± .066	
26	(1.68) ± .066	(33.83) ± .1832	(30.48) ± .1100	(1.68) ± .066	
28	(1.68) ± .066	(36.37) ± .2032	(33.02) ± .1190	(1.68) ± .066	
30	(1.68) ± .066	(38.91) ± .2232	(35.56) ± .1280	(1.68) ± .066	
32	(1.68) ± .066	(41.45) ± .2432	(38.10) ± .1370	(1.68) ± .066	
34	(1.68) ± .066	(43.99) ± .2632	(40.64) ± .1460	(1.68) ± .066	
36	(1.68) ± .066	(46.53) ± .2832	(43.18) ± .1550	(1.68) ± .066	
38	(1.68) ± .066	(49.07) ± .3032	(45.72) ± .1640	(1.68) ± .066	
40	(1.68) ± .066	(51.61) ± .3232	(48.26) ± .1730	(1.68) ± .066	
42	(1.68) ± .066	(54.15) ± .3432	(50.80) ± .1820	(1.68) ± .066	
44	(1.68) ± .066	(56.69) ± .3632	(53.34) ± .1910	(1.68) ± .066	
46	(1.68) ± .066	(59.23) ± .3832	(55.88) ± .2000	(1.68) ± .066	
48	(1.68) ± .066	(61.77) ± .4032	(58.42) ± .2090	(1.68) ± .066	
50	(1.68) ± .066	(64.31) ± .4232	(60.96) ± .2180	(1.68) ± .066	
52	(1.68) ± .066	(66.85) ± .4432	(63.50) ± .2270	(1.68) ± .066	
54	(1.68) ± .066	(69.39) ± .4632	(66.04) ± .2360	(1.68) ± .066	
56	(1.68) ± .066	(71.93) ± .4832	(68.58) ± .2450	(1.68) ± .066	
58	(1.68) ± .066	(74.47) ± .5032	(71.12) ± .2540	(1.68) ± .066	
60	(1.68) ± .066	(77.01) ± .5232	(73.66) ± .2630	(1.68) ± .066	
62	(1.68) ± .066	(79.55) ± .5432	(76.20) ± .2720	(1.68) ± .066	
64	(1.68) ± .066	(82.09) ± .5632	(78.74) ± .2810	(1.68) ± .066	
66	(1.68) ± .066	(84.63) ± .5832	(81.28) ± .2900	(1.68) ± .066	
68	(1.68) ± .066	(87.17) ± .6032	(83.82) ± .2990	(1.68) ± .066	
70	(1.68) ± .066	(89.71) ± .6232	(86.36) ± .3080	(1.68) ± .066	
72	(1.68) ± .066	(92.25) ± .6432	(88.90) ± .3170	(1.68) ± .066	

REVISIONS

7	U	ADD -0803 OPT
6	T	LEAD FREE
5	S	PL WHITE 04/04/26
4	I	ADD -0803 OPTION
3	R2	FOR -0803M4, 0803
2	R1	FOR -0803M4, 0803
1	R	FOR -0803M4, 0803

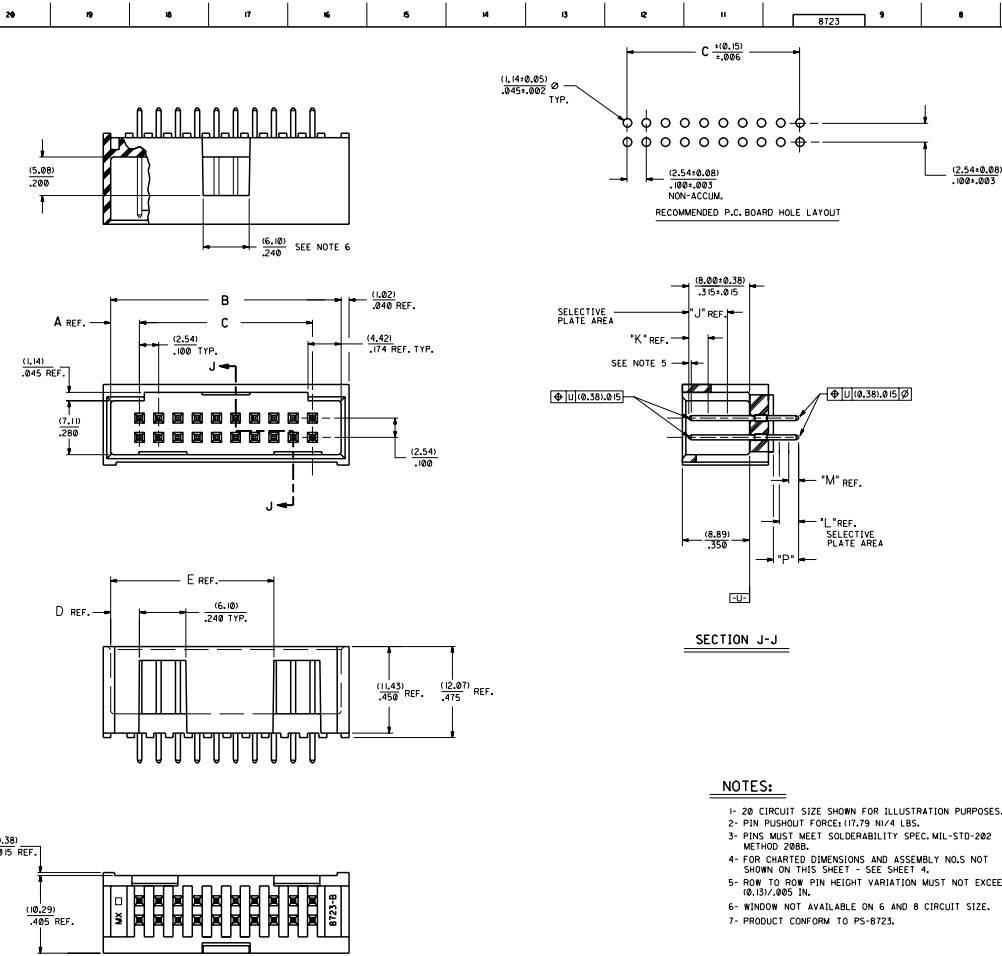
DATE: 10/11/17

BY: RB

APP: RB

REV: 4

DA



**NOTES:**

- 1- 20 CIRCUIT SIZE SHOWN FOR ILLUSTRATION PURPOSES.
- 2- PIN PUSHOUT FORCE:(17.79 N)/4 LBS.
- 3- PINS MUST MEET SOLDERABILITY SPEC.MIL-STD-202 METHOD 200B.
- 4- FOR CHARTED DIMENSIONS AND ASSEMBLY N.O.S NOT SHOWN ON THIS SHEET - SEE SHEET 4.
- 5- ROW TO ROW PIN HEIGHT VARIATION MUST NOT EXCEED (0.13)/0.005 IN.
- 6- WINDOW NOT AVAILABLE ON 6 AND 8 CIRCUIT SIZE.
- 7- PRODUCT CONFORM TO PS-8723.

CKT.	8723		8723		DIM. 'E'
	DIM. 'A'	DIM. 'B'	DIM. 'C'	DIM. 'D'	
06	(13.81) ±0.50	(12.70) ±0.20	(5.08) ±0.50	(13.81) ±0.50	
08	(13.81) ±0.50	(15.24) ±0.50	(7.62) ±0.50	(13.81) ±0.50	
10	(13.81) ±0.50	(17.78) ±0.50	(10.16) ±0.50	(13.81) ±0.50	
12	(13.81) ±0.50	(20.32) ±0.50	(12.70) ±0.50	(13.81) ±0.50	
14	(13.81) ±0.50	(22.86) ±0.50	(15.24) ±0.50	(13.81) ±0.50	
16	(13.81) ±0.50	(25.40) ±0.50	(17.78) ±0.50	(13.81) ±0.50	
18	(13.81) ±0.50	(27.94) ±0.50	(20.32) ±0.50	(13.81) ±0.50	
20	(13.81) ±0.50	(30.48) ±0.50	(22.86) ±0.50	(13.81) ±0.50	(21.59) ±0.50
22	(13.81) ±0.50	(33.02) ±0.50	(25.40) ±0.50	(13.81) ±0.50	(24.13) ±0.50
24	(13.81) ±0.50	(35.56) ±0.50	(27.94) ±0.50	(13.81) ±0.50	(26.67) ±0.50
26	(13.81) ±0.50	(38.10) ±0.50	(30.48) ±0.50	(13.81) ±0.50	(29.21) ±0.50
28	(13.81) ±0.50	(40.64) ±0.50	(33.02) ±0.50	(13.81) ±0.50	(31.75) ±0.50
30	(13.81) ±0.50	(43.18) ±0.50	(35.56) ±0.50	(13.81) ±0.50	(34.29) ±0.50
32	(13.81) ±0.50	(45.72) ±0.50	(38.10) ±0.50	(13.81) ±0.50	(36.83) ±0.50
34	(13.81) ±0.50	(48.26) ±0.50	(40.64) ±0.50	(13.81) ±0.50	(39.37) ±0.50
36	(13.81) ±0.50	(50.80) ±0.50	(43.18) ±0.50	(13.81) ±0.50	(41.91) ±0.50
38	(13.81) ±0.50	(53.34) ±0.50	(45.72) ±0.50	(13.81) ±0.50	(44.45) ±0.50
40	(13.81) ±0.50	(55.88) ±0.50	(48.26) ±0.50	(13.81) ±0.50	(46.99) ±0.50
42	(13.81) ±0.50	(58.42) ±0.50	(50.80) ±0.50	(13.81) ±0.50	(49.53) ±0.50
44	(13.81) ±0.50	(60.96) ±0.50	(53.34) ±0.50	(13.81) ±0.50	(52.07) ±0.50
46	(13.81) ±0.50	(63.50) ±0.50	(55.88) ±0.50	(13.81) ±0.50	(54.61) ±0.50
48	(13.81) ±0.50	(66.04) ±0.50	(58.42) ±0.50	(13.81) ±0.50	(57.15) ±0.50
50	(13.81) ±0.50	(68.58) ±0.50	(60.96) ±0.50	(13.81) ±0.50	(59.69) ±0.50
52	(13.81) ±0.50	(71.12) ±0.50	(63.50) ±0.50	(13.81) ±0.50	(62.23) ±0.50
54	(13.81) ±0.50	(73.66) ±0.50	(66.04) ±0.50	(13.81) ±0.50	(64.77) ±0.50
56	(13.81) ±0.50	(76.20) ±0.50	(68.58) ±0.50	(13.81) ±0.50	(67.31) ±0.50
58	(13.81) ±0.50	(78.74) ±0.50	(71.12) ±0.50	(13.81) ±0.50	(69.85) ±0.50
60	(13.81) ±0.50	(81.28) ±0.50	(73.66) ±0.50	(13.81) ±0.50	(72.39) ±0.50
62	(13.81) ±0.50	(83.82) ±0.50	(76.20) ±0.50	(13.81) ±0.50	(74.93) ±0.50
64	(13.81) ±0.50	(86.36) ±0.50	(78.74) ±0.50	(13.81) ±0.50	(77.47) ±0.50
66	(13.81) ±0.50	(88.90) ±0.50	(81.28) ±0.50	(13.81) ±0.50	(80.01) ±0.50
68	(13.81) ±0.50	(91.44) ±0.50	(83.82) ±0.50	(13.81) ±0.50	(82.55) ±0.50
70	(13.81) ±0.50	(93.98) ±0.50	(86.36) ±0.50	(13.81) ±0.50	(85.09) ±0.50
72	(13.81) ±0.50	(96.52) ±0.50	(88.90) ±0.50	(13.81) ±0.50	(87.63) ±0.50

**MATERIAL:**

SHROUDED WAFER: 30% G.F. POLYESTER, 94#-0 COLOR: BLACK.  
PINS: PHOS. BRONZE 510,  
SEE SHEET 4 FOR FINISHES.

**ASSEMBLY STYLES "C" AND "D"**

REVISIONS

NO.	DATE	BY	APP.	DESCRIPTION
1				ISSUED FOR ASSEMBLY

SCALE: ASSEMBLY  
WAFER-STRAIGHT MT. FULLY SHROUDED  
.100 GRID-FOR USE W/ .025 SQ. PINS  
WITH .100 END WALLS

MOLEX INCORPORATED  
3950 W. 14TH AVENUE  
DENVER, CO 80202  
SEE CHART SDA-8723-\*\*\*\*\*  
DA 12

