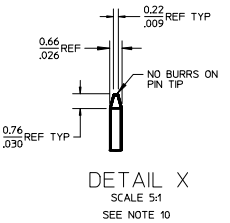
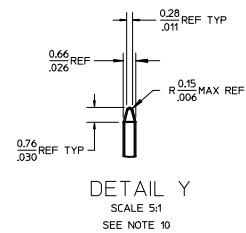
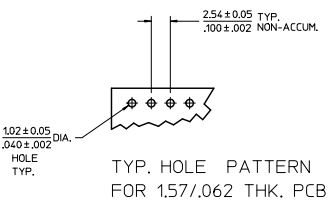


NO. CKTS	DM. A	DM. B
2	5.08	2.54
3	7.62	5.08
4	10.16	7.62
5	12.70	10.16
6	15.24	12.70
7	17.78	15.24
8	20.32	17.78
9	22.86	20.32
10	25.40	22.86
11	27.94	25.40
12	30.48	27.94
13	33.02	30.48
14	35.56	33.02
15	38.10	35.56
16	40.64	38.10
17	43.18	40.64
18	45.72	43.18
19	48.26	45.72
20	50.80	48.26
21	53.34	50.80
22	55.88	53.34
23	58.42	55.88
24	60.96	58.42
25	63.50	60.96
26	66.04	63.50
27	68.58	66.04
28	71.12	68.58
29	73.66	71.12
30	76.20	73.66
31	78.74	76.20
32	81.28	78.74
33	83.82	81.28
34	86.36	83.82
35	88.90	86.36
36	91.44	88.90
	3.600	3.500



- NOTES:
- MATERIAL: GLASS FILLED NYLON  
UL, 94V-0, COLOR: BLACK
  - FINISH: (SEE LAST 3 DIGITS OF PIN NUMBER)  
(154) OVERALL TIN: 0.00254/0.000100 MIN. OVER NICKEL: 0.00127/0.000050 MIN.  
(118) OVERALL TIN: 0.00152/0.000060 MIN. OVER NICKEL: 0.00127/0.000050 MIN.  
(208) SELECT GOLD: 0.00038/0.000015 MIN. SELECT TIN: 0.00254/0.000100 MIN. WITH OVERALL NICKEL UNDERPLATE: 0.00127/0.000050 MIN.  
(228) SELECT GOLD: 0.00076/0.000030 MIN. SELECT TIN: 0.00254/0.000100 MIN. WITH OVERALL NICKEL UNDERPLATE: 0.00127/0.000050 MIN.
  - PRODUCT SPECIFICATION PS 10-07.
  - PACKAGING INFORMATION: SEE TABLES
  - SOLDERABILITY PER SMES-62.
  - SEE SMES-42003 FOR ADDITIONAL INFORMATION ON KINK PIN DIRECTION AND PLACEMENT.
  - HEADERS ARE NOT STACKABLE ON 2.54/.100 CENTERS.
  - PIN PUSH OUT FORCE: 3 LBS. MIN
  - THIS PART CONFORMS TO CLASS B REQUIREMENTS OF COSMETIC SPECIFICATION PS-4599-002.
  - PIN TIP DIMENSIONS ARE SHOWN FOR REFERENCE ONLY. DIMENSIONS APPLY PRIOR TO PLATING OR ASSEMBLY.



2-x	T15
1	T15
SHT.	REV.

ADD 42375-4236  
EC. NO. UCF2009-1249  
DRAWN: JUPPER 2008/11/25  
CHKD: BELL 2008/12/01  
APPR: F. SMITH 2008/12/02

QUALITY SYMBOLS  
▽=0  
▽=0

GENERAL TOLERANCES (UNLESS SPECIFIED)	
PLACES	TOLERANCE
4 PLACES	± .005
3 PLACES	± .010
2 PLACES	± .025 ± .015
1 PLACE	± 0.38 ± .015
ANGULAR ± 1/2°	

DRAFT WHERE APPLICABLE MUST REMAIN WITHIN DIMENSIONS

DIMENSION STYLE	
MM/IN	SCALE
DRAWN BY: SCHAFER	DATE: 11/3/03
CHECKED BY: SAMIEC	DATE: 2004/02/27
APPROVED BY: MARGULIS	DATE: 2004/02/27
MATERIAL NO.	DOCUMENT NO.

THIRD ANGLE PROJECTION

**KK 100 HEADER ASSY  
FLAT VERTICAL  
BREAKAWAY**

**MOLEX INCORPORATED**

SEE CHART SD-42375-001

THIS DRAWING CONTAINS INFORMATION THAT IS PROPRIETARY TO MOLEX INCORPORATED AND SHOULD NOT BE USED WITHOUT WRITTEN PERMISSION

SHEET NO. 1 OF \*

42375

ENG. NO: A-42375-0002/0036

HEADER NUMBER:	42312-0036				
PIN NUMBER:	42663-ABA154				
PIN LENGTH: L	.455 / 11.56				
MATING LENGTH: M	.240 / 6.09				
GOLD POINT: G	N/A				
PC TAIL LENGTH: P	.125 / 3.18				
TIN: T	OVERALL				
CKTS:	2-36				
KINKS:	NO				
VOIDED CKTS:	NONE				
PACKAGING:	BULK PK-40873-0041				
CKTS	MATERIAL NUMBER	ENG NUMBER	CKTS	MATERIAL NUMBER	ENG NUMBER
02	22-28-4020	A-42375-0002	20	22-28-4200	A-42375-0020
03	22-28-4030	A-42375-0003	21	22-28-4210	A-42375-0021
04	22-28-4040	A-42375-0004	22	22-28-4220	A-42375-0022
05	22-28-4050	A-42375-0005	23	22-28-4230	A-42375-0023
06	22-28-4060	A-42375-0006	24	22-28-4240	A-42375-0024
07	22-28-4070	A-42375-0007	25	22-28-4250	A-42375-0025
08	22-28-4080	A-42375-0008	26	22-28-4260	A-42375-0026
09	22-28-4090	A-42375-0009	27	22-28-4270	A-42375-0027
10	22-28-4100	A-42375-0010	28	22-28-4280	A-42375-0028
11	22-28-4110	A-42375-0011	29	22-28-4290	A-42375-0029
12	22-28-4120	A-42375-0012	30	22-28-4300	A-42375-0030
13	22-28-4130	A-42375-0013	31	22-28-4310	A-42375-0031
14	22-28-4140	A-42375-0014	32	22-28-4320	A-42375-0032
15	22-28-4150	A-42375-0015	33	22-28-4330	A-42375-0033
16	22-28-4160	A-42375-0016	34	22-28-4340	A-42375-0034
17	22-28-4170	A-42375-0017	35	22-28-4350	A-42375-0035
18	22-28-4180	A-42375-0018	36	22-28-4360	A-42375-0036
19	22-28-4190	A-42375-0019			

ENG. NO: A-42375-0037/0071

HEADER NUMBER:	42312-0036				
PIN NUMBER:	42663-ABB208				
PIN LENGTH: L	.455 / 11.56				
MATING LENGTH: M	.240 / 6.09				
GOLD POINT: G	.100 / 2.54				
PC TAIL LENGTH: P	.125 / 3.18				
TIN: T	.100 / 3.18				
CKTS:	2-36				
KINKS:	NO				
VOIDED CKTS:	NONE				
PACKAGING:	BULK PK-40873-0041				
CKTS	MATERIAL NUMBER	ENG NUMBER	CKTS	MATERIAL NUMBER	ENG NUMBER
02	22-28-4023	A-42375-0037	20	22-28-4203	A-42375-0055
03	22-28-4033	A-42375-0038	21	22-28-4213	A-42375-0056
04	22-28-4043	A-42375-0039	22	22-28-4223	A-42375-0057
05	22-28-4053	A-42375-0040	23	22-28-4233	A-42375-0058
06	22-28-4063	A-42375-0041	24	22-28-4243	A-42375-0059
07	22-28-4073	A-42375-0042	25	22-28-4253	A-42375-0060
08	22-28-4083	A-42375-0043	26	22-28-4263	A-42375-0061
09	22-28-4093	A-42375-0044	27	22-28-4273	A-42375-0062
10	22-28-4103	A-42375-0045	28	22-28-4283	A-42375-0063
11	22-28-4113	A-42375-0046	29	22-28-4293	A-42375-0064
12	22-28-4123	A-42375-0047	30	22-28-4303	A-42375-0065
13	22-28-4133	A-42375-0048	31	22-28-4313	A-42375-0066
14	22-28-4143	A-42375-0049	32	22-28-4323	A-42375-0067
15	22-28-4153	A-42375-0050	33	22-28-4333	A-42375-0068
16	22-28-4163	A-42375-0051	34	22-28-4343	A-42375-0069
17	22-28-4173	A-42375-0052	35	22-28-4353	A-42375-0070
18	22-28-4183	A-42375-0053	36	22-28-4363	A-42375-0071
19	22-28-4193	A-42375-0054			

REV:

**T15**ECR/ECN INFORMATION:EC No.: **UCP2009-1249**DATE: **12/2/2008**TITLE:**KK 100 HEADER ASSY  
FLAT VERTICAL  
BREAKAWAY**SHEET No.**- 2 -**DOCUMENT NUMBER:**SD- 42375-001**CREATED / REVISED BY:**MKIPPER**CHECKED BY:**JBELL**APPROVED BY:**FSMITH**

TEMPLATE FILENAME: PRODUCT\_SPEC(SIZE\_A)(V.1).DOC

ENG. NO: A-42375-0072/0106						ENG. NO: A-42375-0107/0141					
HEADER NUMBER:			42312-0036			HEADER NUMBER:			42312-0036		
PIN NUMBER:			42663-ABB228			PIN NUMBER:			42663-ATA154		
PIN LENGTH: L			.455 / 11.56			PIN LENGTH: L			.530 / 13.46		
MATING LENGTH: M			.240 / 6.09			MATING LENGTH: M			.320 / 8.13		
GOLD POINT: G			.100 / 2.54			GOLD POINT: G			N/A		
PC TAIL LENGTH: P			.125 / 3.18			PC TAIL LENGTH: P			.120 / 3.05		
TIN: T			.100 / 2.54			TIN: T			OVERALL		
CKTS:			2-36			CKTS:			2-36		
KINKS:			NO			KINKS:			NO		
VOIDED CKTS:			NONE			VOIDED CKTS:			NONE		
PACKAGING:			BULK PK-40873-0041			PACKAGING:			BULK PK-40873-0041		
CKTS	MATERIAL NUMBER	ENG NUMBER	CKTS	MATERIAL NUMBER	ENG NUMBER	CKTS	MATERIAL NUMBER	ENG NUMBER	CKTS	MATERIAL NUMBER	ENG NUMBER
02	22-28-4026	A-42375-0072	20	22-28-4206	A-42375-0090	02	22-28-4021	A-42375-0107	20	22-28-4201	A-42375-0125
03	22-28-4036	A-42375-0073	21	22-28-4216	A-42375-0091	03	22-28-4031	A-42375-0108	21	22-28-4211	A-42375-0126
04	22-28-4046	A-42375-0074	22	22-28-4226	A-42375-0092	04	22-28-4041	A-42375-0109	22	22-28-4221	A-42375-0127
05	22-28-4056	A-42375-0075	23	22-28-4236	A-42375-0093	05	22-28-4051	A-42375-0110	23	22-28-4231	A-42375-0128
06	22-28-4066	A-42375-0076	24	22-28-4246	A-42375-0094	06	22-28-4061	A-42375-0111	24	22-28-4241	A-42375-0129
07	22-28-4076	A-42375-0077	25	22-28-4256	A-42375-0095	07	22-28-4071	A-42375-0112	25	22-28-4251	A-42375-0130
08	22-28-4086	A-42375-0078	26	22-28-4266	A-42375-0096	08	22-28-4081	A-42375-0113	26	22-28-4261	A-42375-0131
09	22-28-4096	A-42375-0079	27	22-28-4276	A-42375-0097	09	22-28-4091	A-42375-0114	27	22-28-4271	A-42375-0132
10	22-28-4106	A-42375-0080	28	22-28-4286	A-42375-0098	10	22-28-4101	A-42375-0115	28	22-28-4281	A-42375-0133
11	22-28-4116	A-42375-0081	29	22-28-4296	A-42375-0099	11	22-28-4111	A-42375-0116	29	22-28-4291	A-42375-0134
12	22-28-4126	A-42375-0082	30	22-28-4306	A-42375-0100	12	22-28-4121	A-42375-0117	30	22-28-4301	A-42375-0135
13	22-28-4136	A-42375-0083	31	22-28-4316	A-42375-0101	13	22-28-4131	A-42375-0118	31	22-28-4311	A-42375-0136
14	22-28-4146	A-42375-0084	32	22-28-4326	A-42375-0102	14	22-28-4141	A-42375-0119	32	22-28-4321	A-42375-0137
15	22-28-4156	A-42375-0085	33	22-28-4336	A-42375-0103	15	22-28-4151	A-42375-0120	33	22-28-4331	A-42375-0138
16	22-28-4166	A-42375-0086	34	22-28-4346	A-42375-0104	16	22-28-4161	A-42375-0121	34	22-28-4341	A-42375-0139
17	22-28-4176	A-42375-0087	35	22-28-4356	A-42375-0105	17	22-28-4171	A-42375-0122	35	22-28-4351	A-42375-0140
18	22-28-4186	A-42375-0088	36	22-28-4366	A-42375-0106	18	22-28-4181	A-42375-0123	36	22-28-4361	A-42375-0141
19	22-28-4196	A-42375-0089				19	22-28-4191	A-42375-0124			
REV: <b>T15</b>			ECR/ECN INFORMATION: EC No.: <b>UCP2009-1249</b> DATE: <b>12/2/2008</b>			TITLE: <b>KK 100 HEADER ASSY FLAT VERTICAL BREAKAWAY</b>			SHEET No. <b>- 3 -</b>		
DOCUMENT NUMBER: <b>SD- 42375-001</b>			CREATED / REVISED BY: <b>MKIPPER</b>			CHECKED BY: <b>JBELL</b>			APPROVED BY: <b>FSMITH</b>		

42375

ENG. NO: A-42375-0142/0176

HEADER NUMBER:	42312-0036
PIN NUMBER:	42663-ATB208
PIN LENGTH: L	.530 / 13.46
MATING LENGTH: M	.320 / 8.13
GOLD POINT: G	.140 / 3.56
PC TAIL LENGTH: P	.120 / 3.05
TIN: T	.135 / 3.43
CKTS:	2-36
KINKS:	NO
VOIDED CKTS:	NONE
PACKAGING:	BULK PK-40873-0041

CKTS	MATERIAL NUMBER	ENG NUMBER	CKTS	MATERIAL NUMBER	ENG NUMBER
02	22-28-4024	A-42375-0142	20	22-28-4204	A-42375-0160
03	22-28-4034	A-42375-0143	21	22-28-4214	A-42375-0161
04	22-28-4044	A-42375-0144	22	22-28-4224	A-42375-0162
05	22-28-4054	A-42375-0145	23	22-28-4234	A-42375-0163
06	22-28-4064	A-42375-0146	24	22-28-4244	A-42375-0164
07	22-28-4074	A-42375-0147	25	22-28-4254	A-42375-0165
08	22-28-4084	A-42375-0148	26	22-28-4264	A-42375-0166
09	22-28-4094	A-42375-0149	27	22-28-4274	A-42375-0167
10	22-28-4104	A-42375-0150	28	22-28-4284	A-42375-0168
11	22-28-4114	A-42375-0151	29	22-28-4294	A-42375-0169
12	22-28-4124	A-42375-0152	30	22-28-4304	A-42375-0170
13	22-28-4134	A-42375-0153	31	22-28-4314	A-42375-0171
14	22-28-4144	A-42375-0154	32	22-28-4324	A-42375-0172
15	22-28-4154	A-42375-0155	33	22-28-4334	A-42375-0173
16	22-28-4164	A-42375-0156	34	22-28-4344	A-42375-0174
17	22-28-4174	A-42375-0157	35	22-28-4354	A-42375-0175
18	22-28-4184	A-42375-0158	36	22-28-4364	A-42375-0176
19	22-28-4194	A-42375-0159			

ENG. NO: A-42375-0177/0211

HEADER NUMBER:	42312-0036
PIN NUMBER:	42663-ATB228
PIN LENGTH: L	.530 / 13.46
MATING LENGTH: M	.320 / 8.13
GOLD POINT: G	.140 / 3.56
PC TAIL LENGTH: P	.120 / 3.05
TIN: T	.135 / 3.43
CKTS:	2-36
KINKS:	NO
VOIDED CKTS:	NONE
PACKAGING:	BULK PK-40873-0041

CKTS	MATERIAL NUMBER	ENG NUMBER	CKTS	MATERIAL NUMBER	ENG NUMBER
02	22-28-4027	A-42375-0177	20	22-28-4207	A-42375-0195
03	22-28-4037	A-42375-0178	21	22-28-4217	A-42375-0196
04	22-28-4047	A-42375-0179	22	22-28-4227	A-42375-0197
05	22-28-4057	A-42375-0180	23	22-28-4237	A-42375-0198
06	22-28-4067	A-42375-0181	24	22-28-4247	A-42375-0199
07	22-28-4077	A-42375-0182	25	22-28-4257	A-42375-0200
08	22-28-4087	A-42375-0183	26	22-28-4267	A-42375-0201
09	22-28-4097	A-42375-0184	27	22-28-4277	A-42375-0202
10	22-28-4107	A-42375-0185	28	22-28-4287	A-42375-0203
11	22-28-4117	A-42375-0186	29	22-28-4297	A-42375-0204
12	22-28-4127	A-42375-0187	30	22-28-4307	A-42375-0205
13	22-28-4137	A-42375-0188	31	22-28-4317	A-42375-0206
14	22-28-4147	A-42375-0189	32	22-28-4327	A-42375-0207
15	22-28-4157	A-42375-0190	33	22-28-4337	A-42375-0208
16	22-28-4167	A-42375-0191	34	22-28-4347	A-42375-0209
17	22-28-4177	A-42375-0192	35	22-28-4357	A-42375-0210
18	22-28-4187	A-42375-0193	36	22-28-4367	A-42375-0211
19	22-28-4197	A-42375-0194			

REV:

T15

ECR/ECN INFORMATION:

EC No.: UCP2009-1249

DATE: 12/2/2008

TITLE:

**KK 100 HEADER ASSY  
FLAT VERTICAL  
BREAKAWAY**

SHEET No.

- 4 -

DOCUMENT NUMBER:

SD- 42375-001

CREATED / REVISED BY:

MKIPPER

CHECKED BY:

JBELL

APPROVED BY:

FSMITH

TEMPLATE FILENAME: PRODUCT\_SPEC(SIZE\_A)(V.1).DOC

ENG. NO: A-42375-0212/0246						ENG. NO: A-42375-0247/0281					
HEADER NUMBER:		42312-0036				HEADER NUMBER:		42312-0036			
PIN NUMBER:		42663-AMA154				PIN NUMBER:		42663-AMB208			
PIN LENGTH: L		.505 / 12.83				PIN LENGTH: L		.505 / 12.83			
MATING LENGTH: M		.295 / 7.49				MATING LENGTH: M		.295 / 7.49			
GOLD POINT: G		N/A				GOLD POINT: G		.140 / 3.56			
PC TAIL LENGTH: P		.120 / 3.05				PC TAIL LENGTH: P		.120 / 3.05			
TIN: T		OVERALL				TIN: T		.135 / 3.43			
CKTS:		2-36				CKTS:		2-36			
KINKS:		NO				KINKS:		NO			
VOIDED CKTS:		NONE				VOIDED CKTS:		NONE			
PACKAGING:		BULK PK-40873-0041				PACKAGING:		BULK PK-40873-0041			
CKTS	MATERIAL NUMBER	ENG NUMBER	CKTS	MATERIAL NUMBER	ENG NUMBER	CKTS	MATERIAL NUMBER	ENG NUMBER	CKTS	MATERIAL NUMBER	ENG NUMBER
02	22-28-4022	A-42375-0212	20	22-28-4202	A-42375-0230	02	22-28-4025	A-42375-0247	20	22-28-4205	A-42375-0265
03	22-28-4032	A-42375-0213	21	22-28-4212	A-42375-0231	03	22-28-4035	A-42375-0248	21	22-28-4215	A-42375-0266
04	22-28-4042	A-42375-0214	22	22-28-4222	A-42375-0232	04	22-28-4045	A-42375-0249	22	22-28-4225	A-42375-0267
05	22-28-4052	A-42375-0215	23	22-28-4232	A-42375-0233	05	22-28-4055	A-42375-0250	23	22-28-4235	A-42375-0268
06	22-28-4062	A-42375-0216	24	22-28-4242	A-42375-0234	06	22-28-4065	A-42375-0251	24	22-28-4245	A-42375-0269
07	22-28-4072	A-42375-0217	25	22-28-4252	A-42375-0235	07	22-28-4075	A-42375-0252	25	22-28-4255	A-42375-0270
08	22-28-4082	A-42375-0218	26	22-28-4262	A-42375-0236	08	22-28-4085	A-42375-0253	26	22-28-4265	A-42375-0271
09	22-28-4092	A-42375-0219	27	22-28-4272	A-42375-0237	09	22-28-4095	A-42375-0254	27	22-28-4275	A-42375-0272
10	22-28-4102	A-42375-0220	28	22-28-4282	A-42375-0238	10	22-28-4105	A-42375-0255	28	22-28-4285	A-42375-0273
11	22-28-4112	A-42375-0221	29	22-28-4292	A-42375-0239	11	22-28-4115	A-42375-0256	29	22-28-4295	A-42375-0274
12	22-28-4122	A-42375-0222	30	22-28-4302	A-42375-0240	12	22-28-4125	A-42375-0257	30	22-28-4305	A-42375-0275
13	22-28-4132	A-42375-0223	31	22-28-4312	A-42375-0241	13	22-28-4135	A-42375-0258	31	22-28-4315	A-42375-0276
14	22-28-4142	A-42375-0224	32	22-28-4322	A-42375-0242	14	22-28-4145	A-42375-0259	32	22-28-4325	A-42375-0277
15	22-28-4152	A-42375-0225	33	22-28-4332	A-42375-0243	15	22-28-4155	A-42375-0260	33	22-28-4335	A-42375-0278
16	22-28-4162	A-42375-0226	34	22-28-4342	A-42375-0244	16	22-28-4165	A-42375-0261	34	22-28-4345	A-42375-0279
17	22-28-4172	A-42375-0227	35	22-28-4352	A-42375-0245	17	22-28-4175	A-42375-0262	35	22-28-4355	A-42375-0280
18	22-28-4182	A-42375-0228	36	22-28-4362	A-42375-0246	18	22-28-4185	A-42375-0263	36	22-28-4365	A-42375-0281
19	22-28-4192	A-42375-0229				19	22-28-4195	A-42375-0264			
REV: <b>T15</b>		<u>ECR/ECN INFORMATION:</u> EC No.: <b>UCP2009-1249</b> DATE: <b>12/2/2008</b>				<u>TITLE:</u> <b>KK 100 HEADER ASSY FLAT VERTICAL BREAKAWAY</b>				<u>SHEET No.</u> <b>- 5 -</b>	
<u>DOCUMENT NUMBER:</u> <b>SD- 42375-001</b>				<u>CREATED / REVISED BY:</u> <b>MKIPPER</b>		<u>CHECKED BY:</u> <b>JBELL</b>		<u>APPROVED BY:</u> <b>FSMITH</b>			
<small>TEMPLATE FILENAME: PRODUCT_SPEC(SIZE_A)(V.1).DOC</small>											

42375

ENG. NO: A-42375-0282/0316

HEADER NUMBER:	42312-0036
PIN NUMBER:	42663-AMB228
PIN LENGTH: L	.505 / 12.83
MATING LENGTH: M	.295 / 7.49
GOLD POINT: G	.140 / 3.56
PC TAIL LENGTH: P	.120 / 3.05
TIN: T	.135 / 3.43
CKTS:	2-36
KINKS:	NO
VOIDED CKTS:	NONE
PACKAGING:	BULK PK-40873-0041

CKTS	MATERIAL NUMBER	ENG NUMBER	CKTS	MATERIAL NUMBER	ENG NUMBER
02	22-28-4028	A-42375-0282	20	22-28-4208	A-42375-0300
03	22-28-4038	A-42375-0283	21	22-28-4218	A-42375-0301
04	22-28-4048	A-42375-0284	22	22-28-4228	A-42375-0302
05	22-28-4058	A-42375-0285	23	22-28-4238	A-42375-0303
06	22-28-4068	A-42375-0286	24	22-28-4248	A-42375-0304
07	22-28-4078	A-42375-0287	25	22-28-4258	A-42375-0305
08	22-28-4088	A-42375-0288	26	22-28-4268	A-42375-0306
09	22-28-4098	A-42375-0289	27	22-28-4278	A-42375-0307
10	22-28-4108	A-42375-0290	28	22-28-4288	A-42375-0308
11	22-28-4118	A-42375-0291	29	22-28-4298	A-42375-0309
12	22-28-4128	A-42375-0192	30	22-28-4308	A-42375-0310
13	22-28-4138	A-42375-0293	31	22-28-4318	A-42375-0311
14	22-28-4148	A-42375-0294	32	22-28-4328	A-42375-0312
15	22-28-4158	A-42375-0295	33	22-28-4338	A-42375-0313
16	22-28-4168	A-42375-0296	34	22-28-4348	A-42375-0314
17	22-28-4178	A-42375-0297	35	22-28-4358	A-42375-0315
18	22-28-4188	A-42375-0298	36	22-28-4368	A-42375-0316
19	22-28-4198	A-42375-0299			

ENG. NO: A-42375-0317/0351

HEADER NUMBER:	42312-0036
PIN NUMBER:	42663-ADA154
PIN LENGTH: L	.465 / 11.81
MATING LENGTH: M	.240 / 6.09
GOLD POINT: G	N/A
PC TAIL LENGTH: P	.135 / 3.43
TIN: T	OVERALL
CKTS:	2-36
KINKS:	SMES-42003
VOIDED CKTS:	NONE
PACKAGING:	BULK PK-40873-0041

CKTS	MATERIAL NUMBER	ENG NUMBER	CKTS	MATERIAL NUMBER	ENG NUMBER
02	22-28-5020	A-42375-0317	20	22-28-5200	A-42375-0335
03	22-28-5030	A-42375-0318	21	22-28-5210	A-42375-0336
04	22-28-5040	A-42375-0319	22	22-28-5220	A-42375-0337
05	22-28-5050	A-42375-0320	23	22-28-5230	A-42375-0338
06	22-28-5060	A-42375-0321	24	22-28-5240	A-42375-0339
07	22-28-5070	A-42375-0322	25	22-28-5250	A-42375-0340
08	22-28-5080	A-42375-0323	26	22-28-5260	A-42375-0341
09	22-28-5090	A-42375-0324	27	22-28-5270	A-42375-0342
10	22-28-5100	A-42375-0325	28	22-28-5280	A-42375-0343
11	22-28-5110	A-42375-0326	29	22-28-5290	A-42375-0344
12	22-28-5120	A-42375-0327	30	22-28-5300	A-42375-0345
13	22-28-5130	A-42375-0328	31	22-28-5310	A-42375-0346
14	22-28-5140	A-42375-0329	32	22-28-5320	A-42375-0347
15	22-28-5150	A-42375-0330	33	22-28-5330	A-42375-0348
16	22-28-5160	A-42375-0331	34	22-28-5340	A-42375-0349
17	22-28-5170	A-42375-0332	35	22-28-5350	A-42375-0350
18	22-28-5180	A-42375-0333	36	22-28-5360	A-42375-0351
19	22-28-5190	A-42375-0334			

REV:

**T15**ECR/ECN INFORMATION:

EC No.: UCP2009-1249

DATE: 12/2/2008

TITLE:**KK 100 HEADER ASSY  
FLAT VERTICAL  
BREAKAWAY**SHEET No.**- 6 -**DOCUMENT NUMBER:**SD- 42375-001**CREATED / REVISED BY:**MKIPPER**CHECKED BY:**JBELL**APPROVED BY:**FSMITH**

TEMPLATE FILENAME: PRODUCT\_SPEC(SIZE\_A)(V.1).DOC

42375

ENG. NO: A-42375-0352/0386

HEADER NUMBER:	42312-0036				
PIN NUMBER:	42663-ADB208				
PIN LENGTH: L	.465 / 11.81				
MATING LENGTH: M	.240 / 6.09				
GOLD POINT: G	.100 / 2.54				
PC TAIL LENGTH: P	.135 / 3.43				
TIN: T	.100 / 2.54				
CKTS:	2-36				
KINKS:	SMES-42003				
VOIDED CKTS:	NONE				
PACKAGING:	BULK PK-40873-0041				
CKTS	MATERIAL NUMBER	ENG NUMBER	CKTS	MATERIAL NUMBER	ENG NUMBER
02	22-28-5023	A-42375-0352	20	22-28-5203	A-42375-0370
03	22-28-5033	A-42375-0353	21	22-28-5213	A-42375-0371
04	22-28-5043	A-42375-0354	22	22-28-5223	A-42375-0372
05	22-28-5053	A-42375-0355	23	22-28-5233	A-42375-0373
06	22-28-5063	A-42375-0356	24	22-28-5243	A-42375-0374
07	22-28-5073	A-42375-0357	25	22-28-5253	A-42375-0375
08	22-28-5083	A-42375-0358	26	22-28-5263	A-42375-0376
09	22-28-5093	A-42375-0359	27	22-28-5273	A-42375-0377
10	22-28-5103	A-42375-0360	28	22-28-5283	A-42375-0378
11	22-28-5113	A-42375-0361	29	22-28-5293	A-42375-0379
12	22-28-5123	A-42375-0362	30	22-28-5303	A-42375-0380
13	22-28-5133	A-42375-0363	31	22-28-5313	A-42375-0381
14	22-28-5143	A-42375-0364	32	22-28-5323	A-42375-0382
15	22-28-5153	A-42375-0365	33	22-28-5333	A-42375-0383
16	22-28-5163	A-42375-0366	34	22-28-5343	A-42375-0384
17	22-28-5173	A-42375-0367	35	22-28-5353	A-42375-0385
18	22-28-5183	A-42375-0368	36	22-28-5363	A-42375-0386
19	22-28-5193	A-42375-0369			

ENG. NO: A-42375-0387/0421

HEADER NUMBER:	42312-0036				
PIN NUMBER:	42663-ADB228				
PIN LENGTH: L	.465 / 11.81				
MATING LENGTH: M	.240 / 6.09				
GOLD POINT: G	.100 / 2.54				
PC TAIL LENGTH: P	.135 / 3.43				
TIN: T	.100 / 2.54				
CKTS:	2-36				
KINKS:	SMES-42003				
VOIDED CKTS:	NONE				
PACKAGING:	BULK PK-40873-0041				
CKTS	MATERIAL NUMBER	ENG NUMBER	CKTS	MATERIAL NUMBER	ENG NUMBER
02	22-28-5026	A-42375-0387	20	22-28-5206	A-42375-0405
03	22-28-5036	A-42375-0388	21	22-28-5216	A-42375-0406
04	22-28-5046	A-42375-0389	22	22-28-5226	A-42375-0407
05	22-28-5056	A-42375-0390	23	22-28-5236	A-42375-0408
06	22-28-5066	A-42375-0391	24	22-28-5246	A-42375-0409
07	22-28-5076	A-42375-0392	25	22-28-5256	A-42375-0410
08	22-28-5086	A-42375-0393	26	22-28-5266	A-42375-0411
09	22-28-5096	A-42375-0394	27	22-28-5276	A-42375-0412
10	22-28-5106	A-42375-0395	28	22-28-5286	A-42375-0413
11	22-28-5116	A-42375-0396	29	22-28-5296	A-42375-0414
12	22-28-5126	A-42375-0397	30	22-28-5306	A-42375-0415
13	22-28-5136	A-42375-0398	31	22-28-5316	A-42375-0416
14	22-28-5146	A-42375-0399	32	22-28-5326	A-42375-0417
15	22-28-5156	A-42375-0400	33	22-28-5336	A-42375-0418
16	22-28-5166	A-42375-0401	34	22-28-5346	A-42375-0419
17	22-28-5176	A-42375-0402	35	22-28-5356	A-42375-0420
18	22-28-5186	A-42375-0403	36	22-28-5366	A-42375-0421
19	22-28-5196	A-42375-0404			

REV:

**T15**ECR/ECN INFORMATION:

EC No.: UCP2009-1249

DATE: 12/2/2008

TITLE:**KK 100 HEADER ASSY  
FLAT VERTICAL  
BREAKAWAY**SHEET No.**- 7 -**DOCUMENT NUMBER:**SD- 42375-001**CREATED / REVISED BY:**MKIPPER**CHECKED BY:**JBELL**APPROVED BY:**FSMITH**

TEMPLATE FILENAME: PRODUCT\_SPEC(SIZE\_A)(V.1).DOC

42375

ENG. NO: A-42375-0422/0456						ENG. NO: A-42375-0457/0491					
HEADER NUMBER:			42312-0036			HEADER NUMBER:			42312-0036		
PIN NUMBER:			42663-AYA154			PIN NUMBER:			42663-AYB208		
PIN LENGTH: L			.545 / 13.84			PIN LENGTH: L			.545 / 13.84		
MATING LENGTH: M			.320 / 8.13			MATING LENGTH: M			.320 / 8.13		
GOLD POINT: G			N/A			GOLD POINT: G			.140 / 3.56		
PC TAIL LENGTH: P			.135 / 3.43			PC TAIL LENGTH: P			.135 / 3.43		
TIN: T			OVERALL			TIN: T			.135 / 3.43		
CKTS:			2-36			CKTS:			2-36		
KINKS:			SMES-42003			KINKS:			SMES-42003		
VOIDED CKTS:			NONE			VOIDED CKTS:			NONE		
PACKAGING:			BULK PK-40873-0041			PACKAGING:			BULK PK-40873-0041		
CKTS	MATERIAL NUMBER	ENG NUMBER	CKTS	MATERIAL NUMBER	ENG NUMBER	CKTS	MATERIAL NUMBER	ENG NUMBER	CKTS	MATERIAL NUMBER	ENG NUMBER
02	22-28-5021	A-42375-0422	20	22-28-5201	A-42375-0440	02	22-28-5024	A-42375-0457	20	22-28-5204	A-42375-0475
03	22-28-5031	A-42375-0423	21	22-28-5211	A-42375-0441	03	22-28-5034	A-42375-0458	21	22-28-5214	A-42375-0476
04	22-28-5041	A-42375-0424	22	22-28-5221	A-42375-0442	04	22-28-5044	A-42375-0459	22	22-28-5224	A-42375-0477
05	22-28-5051	A-42375-0425	23	22-28-5231	A-42375-0443	05	22-28-5054	A-42375-0460	23	22-28-5234	A-42375-0478
06	22-28-5061	A-42375-0426	24	22-28-5241	A-42375-0444	06	22-28-5064	A-42375-0461	24	22-28-5244	A-42375-0479
07	22-28-5071	A-42375-0427	25	22-28-5251	A-42375-0445	07	22-28-5074	A-42375-0462	25	22-28-5254	A-42375-0480
08	22-28-5081	A-42375-0428	26	22-28-5261	A-42375-0446	08	22-28-5084	A-42375-0463	26	22-28-5264	A-42375-0481
09	22-28-5091	A-42375-0429	27	22-28-5271	A-42375-0447	09	22-28-5094	A-42375-0464	27	22-28-5274	A-42375-0482
10	22-28-5101	A-42375-0430	28	22-28-5281	A-42375-0448	10	22-28-5104	A-42375-0465	28	22-28-5284	A-42375-0483
11	22-28-5111	A-42375-0431	29	22-28-5291	A-42375-0449	11	22-28-5114	A-42375-0466	29	22-28-5294	A-42375-0484
12	22-28-5121	A-42375-0432	30	22-28-5301	A-42375-0450	12	22-28-5124	A-42375-0467	30	22-28-5304	A-42375-0485
13	22-28-5131	A-42375-0433	31	22-28-5311	A-42375-0451	13	22-28-5134	A-42375-0468	31	22-28-5314	A-42375-0486
14	22-28-5141	A-42375-0434	32	22-28-5321	A-42375-0452	14	22-28-5144	A-42375-0469	32	22-28-5324	A-42375-0487
15	22-28-5151	A-42375-0435	33	22-28-5331	A-42375-0453	15	22-28-5154	A-42375-0470	33	22-28-5334	A-42375-0488
16	22-28-5161	A-42375-0436	34	22-28-5341	A-42375-0454	16	22-28-5164	A-42375-0471	34	22-28-5344	A-42375-0489
17	22-28-5171	A-42375-0437	35	22-28-5351	A-42375-0455	17	22-28-5174	A-42375-0472	35	22-28-5354	A-42375-0490
18	22-28-5181	A-42375-0438	36	22-28-5361	A-42375-0456	18	22-28-5184	A-42375-0473	36	22-28-5364	A-42375-0491
19	22-28-5191	A-42375-0439				19	22-28-5194	A-42375-0474			
REV: <b>T15</b>			ECR/ECN INFORMATION: EC No.: <b>UCP2009-1249</b> DATE: <b>12/2/2008</b>			TITLE: <b>KK 100 HEADER ASSY FLAT VERTICAL BREAKAWAY</b>			SHEET No. <b>- 8 -</b>		
DOCUMENT NUMBER: <b>SD- 42375-001</b>			CREATED / REVISED BY: <b>MKIPPER</b>			CHECKED BY: <b>JBELL</b>			APPROVED BY: <b>FSMITH</b>		
TEMPLATE FILENAME: PRODUCT_SPEC(SIZE_A)(V.1).DOC											



42375

ENG. NO: A-42375-0492/0526						ENG. NO: A-42375-0527/0561					
HEADER NUMBER:			42312-0036			HEADER NUMBER:			42312-0036		
PIN NUMBER:			42663-AYB228			PIN NUMBER:			42663-ARA154		
PIN LENGTH: L			.545 / 13.84			PIN LENGTH: L			.520 / 13.21		
MATING LENGTH: M			.320 / 8.13			MATING LENGTH: M			.295 / 7.49		
GOLD POINT: G			.140 / 3.56			GOLD POINT: G			N/A		
PC TAIL LENGTH: P			.135 / 3.43			PC TAIL LENGTH: P			.135 / 3.43		
TIN: T			.135 / 3.43			TIN: T			OVERALL		
CKTS:			2-36			CKTS:			2-36		
KINKS:			SMES-42003			KINKS:			SMES-42003		
VOIDED CKTS:			NONE			VOIDED CKTS:			NONE		
PACKAGING:			BULK PK-40873-0041			PACKAGING:			BULK PK-40873-0041		
CKTS	MATERIAL NUMBER	ENG NUMBER	CKTS	MATERIAL NUMBER	ENG NUMBER	CKTS	MATERIAL NUMBER	ENG NUMBER	CKTS	MATERIAL NUMBER	ENG NUMBER
02	22-28-5027	A-42375-0492	20	22-28-5207	A-42375-0510	02	22-28-5022	A-42375-0527	20	22-28-5202	A-42375-0545
03	22-28-5037	A-42375-0493	21	22-28-5217	A-42375-0511	03	22-28-5032	A-42375-0528	21	22-28-5212	A-42375-0546
04	22-28-5047	A-42375-0494	22	22-28-5227	A-42375-0512	04	22-28-5042	A-42375-0529	22	22-28-5222	A-42375-0547
05	22-28-5057	A-42375-0495	23	22-28-5237	A-42375-0513	05	22-28-5052	A-42375-0530	23	22-28-5232	A-42375-0548
06	22-28-5067	A-42375-0496	24	22-28-5247	A-42375-0514	06	22-28-5062	A-42375-0531	24	22-28-5242	A-42375-0549
07	22-28-5077	A-42375-0497	25	22-28-5257	A-42375-0515	07	22-28-5072	A-42375-0532	25	22-28-5252	A-42375-0550
08	22-28-5087	A-42375-0498	26	22-28-5267	A-42375-0516	08	22-28-5082	A-42375-0533	26	22-28-5262	A-42375-0551
09	22-28-5097	A-42375-0499	27	22-28-5277	A-42375-0517	09	22-28-5092	A-42375-0534	27	22-28-5272	A-42375-0552
10	22-28-5107	A-42375-0500	28	22-28-5287	A-42375-0518	10	22-28-5102	A-42375-0535	28	22-28-5282	A-42375-0553
11	22-28-5117	A-42375-0501	29	22-28-5297	A-42375-0519	11	22-28-5112	A-42375-0536	29	22-28-5292	A-42375-0554
12	22-28-5127	A-42375-0502	30	22-28-5307	A-42375-0520	12	22-28-5122	A-42375-0537	30	22-28-5302	A-42375-0555
13	22-28-5137	A-42375-0503	31	22-28-5317	A-42375-0521	13	22-28-5132	A-42375-0538	31	22-28-5312	A-42375-0556
14	22-28-5147	A-42375-0504	32	22-28-5327	A-42375-0522	14	22-28-5142	A-42375-0539	32	22-28-5322	A-42375-0557
15	22-28-5157	A-42375-0505	33	22-28-5337	A-42375-0523	15	22-28-5152	A-42375-0540	33	22-28-5332	A-42375-0558
16	22-28-5167	A-42375-0506	34	22-28-5347	A-42375-0524	16	22-28-5162	A-42375-0541	34	22-28-5342	A-42375-0559
17	22-28-5177	A-42375-0507	35	22-28-5357	A-42375-0525	17	22-28-5172	A-42375-0542	35	22-28-5352	A-42375-0560
18	22-28-5187	A-42375-0508	36	22-28-5367	A-42375-0526	18	22-28-5182	A-42375-0543	36	22-28-5362	A-42375-0561
19	22-28-5197	A-42375-0509				19	22-28-5192	A-42375-0544			
REV: <b>T15</b>			ECR/ECN INFORMATION: EC No.: <b>UCP2009-1249</b> DATE: <b>12/2/2008</b>			TITLE: <b>KK 100 HEADER ASSY FLAT VERTICAL BREAKAWAY</b>			SHEET No. <b>- 9 -</b>		
DOCUMENT NUMBER: <b>SD- 42375-001</b>			CREATED / REVISED BY: <b>MKIPPER</b>			CHECKED BY: <b>JBELL</b>			APPROVED BY: <b>FSMITH</b>		
TEMPLATE FILENAME: PRODUCT_SPEC(SIZE_A)(V.1).DOC											

42375

ENG. NO: A-42375-0562/0596						ENG. NO: A-42375-0597/0631					
HEADER NUMBER:			42312-0036			HEADER NUMBER:			42312-0036		
PIN NUMBER:			42663-ARB208			PIN NUMBER:			42663-ARB228		
PIN LENGTH: L			.520 / 13.21			PIN LENGTH: L			.520 / 13.21		
MATING LENGTH: M			.295 / 7.49			MATING LENGTH: M			.295 / 7.49		
GOLD POINT: G			.140 / 3.56			GOLD POINT: G			.140 / 3.56		
PC TAIL LENGTH: P			.135 / 3.43			PC TAIL LENGTH: P			.135 / 3.43		
TIN: T			.135 / 3.43			TIN: T			.135 / 3.43		
CKTS:			2-36			CKTS:			2-36		
KINKS:			SMES-42003			KINKS:			SM ES-42003		
VOIDED CKTS:			NONE			VOIDED CKTS:			NONE		
PACKAGING:			BULK PK-40873-0041			PACKAGING:			BULK PK-40873-0041		
CKTS	MATERIAL NUMBER	ENG NUMBER	CKTS	MATERIAL NUMBER	ENG NUMBER	CKTS	MATERIAL NUMBER	ENG NUMBER	CKTS	MATERIAL NUMBER	ENG NUMBER
02	22-28-5025	A-42375-0562	20	22-28-5205	A-42375-0580	02	22-28-5028	A-42375-0597	20	22-28-5208	A-42375-0615
03	22-28-5035	A-42375-0563	21	22-28-5215	A-42375-0581	03	22-28-5038	A-42375-0598	21	22-28-5218	A-42375-0616
04	22-28-5045	A-42375-0564	22	22-28-5225	A-42375-0582	04	22-28-5048	A-42375-0599	22	22-28-5228	A-42375-0617
05	22-28-5055	A-42375-0565	23	22-28-5235	A-42375-0583	05	22-28-5058	A-42375-0600	23	22-28-5238	A-42375-0618
06	22-28-5065	A-42375-0566	24	22-28-5245	A-42375-0584	06	22-28-5068	A-42375-0601	24	22-28-5248	A-42375-0619
07	22-28-5075	A-42375-0567	25	22-28-5255	A-42375-0585	07	22-28-5078	A-42375-0602	25	22-28-5258	A-42375-0620
08	22-28-5085	A-42375-0568	26	22-28-5265	A-42375-0586	08	22-28-5088	A-42375-0603	26	22-28-5268	A-42375-0621
09	22-28-5095	A-42375-0569	27	22-28-5275	A-42375-0587	09	22-28-5098	A-42375-0604	27	22-28-5278	A-42375-0622
10	22-28-5105	A-42375-0570	28	22-28-5285	A-42375-0588	10	22-28-5108	A-42375-0605	28	22-28-5288	A-42375-0623
11	22-28-5115	A-42375-0571	29	22-28-5295	A-42375-0589	11	22-28-5118	A-42375-0606	29	22-28-5298	A-42375-0624
12	22-28-5125	A-42375-0572	30	22-28-5305	A-42375-0590	12	22-28-5128	A-42375-0607	30	22-28-5308	A-42375-0625
13	22-28-5135	A-42375-0573	31	22-28-5315	A-42375-0591	13	22-28-5138	A-42375-0608	31	22-28-5318	A-42375-0626
14	22-28-5145	A-42375-0574	32	22-28-5325	A-42375-0592	14	22-28-5148	A-42375-0609	32	22-28-5328	A-42375-0627
15	22-28-5155	A-42375-0575	33	22-28-5335	A-42375-0593	15	22-28-5158	A-42375-0610	33	22-28-5338	A-42375-0628
16	22-28-5165	A-42375-0576	34	22-28-5345	A-42375-0594	16	22-28-5168	A-42375-0611	34	22-28-5348	A-42375-0629
17	22-28-5175	A-42375-0577	35	22-28-5355	A-42375-0595	17	22-28-5178	A-42375-0612	35	22-28-5358	A-42375-0630
18	22-28-5185	A-42375-0578	36	22-28-5365	A-42375-0596	18	22-28-5188	A-42375-0613	36	22-28-5368	A-42375-0631
19	22-28-5195	A-42375-0579				19	22-28-5198	A-42375-0614			
REV: <b>T15</b>			ECR/ECN INFORMATION: EC No.: <b>UCP2009-1249</b> DATE: <b>12/2/2008</b>			TITLE: <b>KK 100 HEADER ASSY FLAT VERTICAL BREAKAWAY</b>			SHEET No. <b>- 10 -</b>		
DOCUMENT NUMBER: <b>SD- 42375-001</b>			CREATED / REVISED BY: <b>MKIPPER</b>			CHECKED BY: <b>JBELL</b>			APPROVED BY: <b>FSMITH</b>		
TEMPLATE FILENAME: PRODUCT_SPEC(SIZE_A)(V.1).DOC											

42375

ENG. NO: A-42375-0667/0699

HEADER NUMBER:	42312-0036				
PIN NUMBER:	42663-ABB208				
PIN LENGTH: L	.455 / 11.56				
MATING LENGTH: M	.240 / 6.09				
GOLD POINT: G	.100 / 2.54				
PC TAIL LENGTH: P	.125 / 3.18				
TIN: T	.100 / 2.54				
CKTS:	4-36				
KINKS:	NO				
VOIDED CKTS:	4				
PACKAGING:	BULK PK-40873-0041				
CKTS	MATERIAL NUMBER	ENG NUMBER	CKTS	MATERIAL NUMBER	ENG NUMBER
02			20	42375-0683	A-42375-0683
03			21	42375-0684	A-42375-0684
04	42375-0667	A-42375-0667	22	42375-0685	A-42375-0685
05	42375-0668	A-42375-0668	23	42375-0686	A-42375-0686
06	22-30-3060	A-42375-0669	24	42375-0687	A-42375-0687
07	42375-0670	A-42375-0670	25	42375-0688	A-42375-0688
08	42375-0671	A-42375-0671	26	42375-0689	A-42375-0689
09	42375-0672	A-42375-0672	27	42375-0690	A-42375-0690
10	42375-0673	A-42375-0673	28	42375-0691	A-42375-0691
11	42375-0674	A-42375-0674	29	42375-0692	A-42375-0692
12	22-30-3120	A-42375-0675	30	42375-0693	A-42375-0693
13	42375-0676	A-42375-0676	31	42375-0694	A-42375-0694
14	42375-0677	A-42375-0677	32	42375-0695	A-42375-0695
15	42375-0678	A-42375-0678	33	42375-0696	A-42375-0696
16	42375-0679	A-42375-0679	34	42375-0697	A-42375-0697
17	42375-0680	A-42375-0680	35	42375-0698	A-42375-0698
18	42375-0681	A-42375-0681	36	42375-0699	A-42375-0699
19	42375-0682	A-42375-0682			

ENG. NO: A-42375-0700/0732

HEADER NUMBER:	42312-0036				
PIN NUMBER:	42663-ADB208				
PIN LENGTH: L	.465 / 11.81				
MATING LENGTH: M	.240 / 6.09				
GOLD POINT: G	.100 / 2.54				
PC TAIL LENGTH: P	.135 / 3.43				
TIN: T	.100 / 2.54				
CKTS:	4-36				
KINKS:	SMES-42003				
VOIDED CKTS:	4				
PACKAGING:	BULK PK-40873-0041				
CKTS	MATERIAL NUMBER	ENG NUMBER	CKTS	MATERIAL NUMBER	ENG NUMBER
02			20	42375-0716	A-42375-0716
03			21	42375-0717	A-42375-0717
04	42375-0700	A-42375-0700	22	42375-0718	A-42375-0718
05	42375-0701	A-42375-0701	23	42375-0719	A-42375-0719
06	22-30-3061	A-42375-0702	24	42375-0720	A-42375-0720
07	42375-0703	A-42375-0703	25	42375-0721	A-42375-0721
08	42375-0704	A-42375-0704	26	42375-0722	A-42375-0722
09	42375-0705	A-42375-0705	27	42375-0723	A-42375-0723
10	42375-0706	A-42375-0706	28	42375-0724	A-42375-0724
11	42375-0707	A-42375-0707	29	42375-0725	A-42375-0725
12	42375-0708	A-42375-0708	30	42375-0726	A-42375-0726
13	42375-0709	A-42375-0709	31	42375-0727	A-42375-0727
14	42375-0710	A-42375-0710	32	42375-0728	A-42375-0728
15	42375-0711	A-42375-0711	33	42375-0729	A-42375-0729
16	42375-0712	A-42375-0712	34	42375-0730	A-42375-0730
17	42375-0713	A-42375-0713	35	42375-0731	A-42375-0731
18	42375-0714	A-42375-0714	36	42375-0732	A-42375-0732
19	42375-0715	A-42375-0715			

REV: <b>T15</b>	<u>ECR/ECN INFORMATION:</u>	<u>TITLE:</u> <b>KK 100 HEADER ASSY FLAT VERTICAL BREAKAWAY</b>	<u>SHEET No.</u> <b>- 11 -</b>
	EC No.: <b>UCP2009-1249</b> DATE: <b>12/2/2008</b>		
<u>DOCUMENT NUMBER:</u> <b>SD- 42375-001</b>	<u>CREATED / REVISED BY:</u> <b>MKIPPER</b>	<u>CHECKED BY:</u> <b>JBELL</b>	<u>APPROVED BY:</u> <b>FSMITH</b>

TEMPLATE FILENAME: PRODUCT\_SPEC(SIZE\_A)(V.1).DOC

ENG. NO: A-42375-0836/0870

HEADER NUMBER:	42312-0036				
PIN NUMBER:	42663-BSA154				
PIN LENGTH: L	.630 / 16.00				
MATING LENGTH: M	.405/10.29				
GOLD POINT: G	N/A				
PC TAIL LENGTH: P	.135/3.43				
TIN: T	OVERALL				
CKTS:	2-36				
KINKS:	YES				
VOIDED CKTS:	NONE				
PACKAGING:	BULK PK-40873-0041				
CKTS	MATERIAL NUMBER	ENG NUMBER	CKTS	MATERIAL NUMBER	ENG NUMBER
02		A-42375-0836	20	22-30-3203	A-42375-0854
03	22-30-3033	A-42375-0837	21	22-30-3213	A-42375-0855
04	22-30-3043	A-42375-0838	22	22-30-3223	A-42375-0856
05	22-30-3053	A-42375-0839	23	22-30-3233	A-42375-0857
06	22-30-3063	A-42375-0840	24	22-30-3243	A-42375-0858
07	22-30-3073	A-42375-0841	25	22-30-3253	A-42375-0859
08	22-30-3083	A-42375-0842	26	22-30-3263	A-42375-0860
09	22-30-3093	A-42375-0843	27	22-30-3273	A-42375-0861
10	22-30-3103	A-42375-0844	28	22-30-3283	A-42375-0862
11	22-30-3113	A-42375-0845	29	22-30-3293	A-42375-0863
12	22-30-3123	A-42375-0846	30	22-30-3303	A-42375-0864
13	22-30-3133	A-42375-0847	31	22-30-3313	A-42375-0865
14	22-30-3143	A-42375-0848	32	22-30-3323	A-42375-0866
15	22-30-3153	A-42375-0849	33	22-30-3333	A-42375-0867
16	22-30-3163	A-42375-0850	34	22-30-3343	A-42375-0868
17	22-30-3173	A-42375-0851	35	22-30-3353	A-42375-0869
18	22-30-3183	A-42375-0852	36	22-30-3363	A-42375-0870
19	22-30-3193	A-42375-0853			

REV: <b>T15</b>	<u>ECR/ECN INFORMATION:</u> EC No.: <b>UCP2009-1249</b> DATE: <b>12/2/2008</b>	<u>TITLE:</u> <b>KK 100 HEADER ASSY FLAT VERTICAL BREAKAWAY</b>	<u>SHEET No.</u> <b>- 12 -</b>
<u>DOCUMENT NUMBER:</u> <b>SD- 42375-001</b>	<u>CREATED / REVISED BY:</u> <b>MKIPPER</b>	<u>CHECKED BY:</u> <b>JBELL</b>	<u>APPROVED BY:</u> <b>FSMITH</b>

TEMPLATE FILENAME: PRODUCT\_SPEC(SIZE\_A)(V.1).DOC

42375

ENG. NO: A-42375-0871/0904						ENG. NO: A-42375-0973/1001									
HEADER NUMBER:		42312-0036				HEADER NUMBER:		42312-0036							
PIN NUMBER:		42663-ATA154				PIN NUMBER:		42663-ABA154							
PIN LENGTH: L		.530 / 13.46				PIN LENGTH: L		.455 / 11.56							
MATING LENGTH: M		.320 / 8.13				MATING LENGTH: M		.240 / 6.09							
GOLD POINT: G		N/A				GOLD POINT: G		N/A							
PC TAIL LENGTH: P		.120 / 3.05				PC TAIL LENGTH: P		.125 / 3.18							
TIN: T		OVERALL				TIN: T		OVERALL							
CKTS:		3-36				CKTS:		8-36							
KINKS:		NO				KINKS:		NO							
VOIDED CKTS:		2				VOIDED CKTS:		3,8							
PACKAGING:		BULK PK-40873-0041				PACKAGING:		BULK PK-40873-0041							
CKTS	MATERIAL NUMBER	ENG NUMBER	CKTS	MATERIAL NUMBER	ENG NUMBER	CKTS	MATERIAL NUMBER	ENG NUMBER	CKTS	MATERIAL NUMBER	ENG NUMBER				
02			20	22-30-3204	A-42375-0888	02			20	42375-0985	A-42375-0985				
03	22-30-3034	A-42375-0871	21	22-30-3214	A-42375-0889	03			21	42375-0986	A-42375-0986				
04	22-30-3044	A-42375-0872	22	22-30-3224	A-42375-0890	04			22	42375-0987	A-42375-0987				
05	22-30-3054	A-42375-0873	23	22-30-3234	A-42375-0891	05			23	42375-0988	A-42375-0988				
06	22-30-3064	A-42375-0874	24	22-30-3244	A-42375-0892	06			24	42375-0989	A-42375-0989				
07	22-30-3074	A-42375-0875	25	22-30-3254	A-42375-0893	07			25	42375-0990	A-42375-0990				
08	22-30-3084	A-42375-0876	26	22-30-3264	A-42375-0894	08	42375-0973	A-42375-0973	26	42375-0991	A-42375-0991				
09	22-30-3094	A-42375-0877	27	22-30-3274	A-42375-0895	09	42375-0974	A-42375-0974	27	42375-0992	A-42375-0992				
10	22-30-3104	A-42375-0878	28	22-30-3284	A-42375-0896	10	22-30-3107	A-42375-0975	28	42375-0993	A-42375-0993				
11	22-30-3114	A-42375-0879	29	22-30-3294	A-42375-0897	11	42375-0976	A-42375-0976	29	42375-0994	A-42375-0994				
12	22-30-3124	A-42375-0880	30	22-30-3304	A-42375-0898	12	42375-0977	A-42375-0977	30	42375-0995	A-42375-0995				
13	22-30-3134	A-42375-0881	31	22-30-3314	A-42375-0899	13	42375-0978	A-42375-0978	31	42375-0996	A-42375-0996				
14	22-30-3144	A-42375-0882	32	22-30-3324	A-42375-0900	14	42375-0979	A-42375-0979	32	42375-0997	A-42375-0997				
15	22-30-3154	A-42375-0883	33	22-30-3334	A-42375-0901	15	42375-0980	A-42375-0980	33	42375-0998	A-42375-0998				
16	22-30-3164	A-42375-0884	34	22-30-3344	A-42375-0902	16	42375-0981	A-42375-0981	34	42375-0999	A-42375-0999				
17	22-30-3174	A-42375-0885	35	22-30-3354	A-42375-0903	17	42375-0982	A-42375-0982	35	42375-1000	A-42375-1000				
18	22-30-3184	A-42375-0886	36	22-30-3364	A-42375-0904	18	42375-0983	A-42375-0983	36	42375-1001	A-42375-1001				
19	22-30-3194	A-42375-0887				19	42375-0984	A-42375-0984							
REV: <b>T15</b>		<u>ECR/ECN INFORMATION:</u> EC No.: <b>UCP2009-1249</b> DATE: <b>12/2/2008</b>				<u>TITLE:</u> <b>KK 100 HEADER ASSY FLAT VERTICAL BREAKAWAY</b>						<u>SHEET No.</u> <b>- 13 -</b>			
<u>DOCUMENT NUMBER:</u> <b>SD- 42375-001</b>				<u>CREATED / REVISED BY:</u> <b>MKIPPER</b>				<u>CHECKED BY:</u> <b>JBELL</b>				<u>APPROVED BY:</u> <b>FSMITH</b>			
<small>TEMPLATE FILENAME: PRODUCT_SPEC(SIZE_A)(V.1).DOC</small>															

ENG. NO: A-42375-1105/1139						ENG. NO: 42375-1244/1278				
HEADER NUMBER:		42312-0036				HEADER NUMBER:		42312-0036		
PIN NUMBER:		42663-ABB208				PIN NUMBER:		42663-ABA154		
PIN LENGTH: L		.455 / 11.56				PIN LENGTH: L		.455 / 11.56		
MATING LENGTH: M		.240 / 6.09				MATING LENGTH: M		.240 / 6.09		
GOLD POINT: G		.100 / 2.54				GOLD POINT: G		N/A		
PC TAIL LENGTH: P		.125 / 3.18				PC TAIL LENGTH: P		.125 / 3.18		
TIN: T		.100 / 2.54				TIN: T		OVERALL		
CKTS:		2-36				CKTS:		2-36		
KINKS:		NO				KINKS:		NO		
VOIDED CKTS:		2				VOIDED CKTS:		2		
PACKAGING:		BULK PK-40873-0041				PACKAGING:		BULK PK-40873-0041		
CKTS	MATERIAL NUMBER	ENG NUMBER	CKTS	MATERIAL NUMBER	ENG NUMBER	CKTS	ITEM NUMBER	CKTS	ITEM NUMBER	
02	42375-1105	A-42375-1105	20	42375-1123	A-42375-1123	02	42375-1244	20	42375-1262	
03	42375-1106	A-42375-1106	21	42375-1124	A-42375-1124	03	42375-1245	21	42375-1263	
04	42375-1107	A-42375-1107	22	42375-1125	A-42375-1125	04	42375-1246	22	42375-1264	
05	42375-1108	A-42375-1108	23	42375-1126	A-42375-1126	05	42375-1247	23	42375-1265	
06	42375-1109	A-42375-1109	24	42375-1127	A-42375-1127	06	42375-1248	24	42375-1266	
07	42375-1110	A-42375-1110	25	42375-1128	A-42375-1128	07	42375-1249	25	42375-1267	
08	42375-1111	A-42375-1111	26	42375-1129	A-42375-1129	08	42375-1250	26	42375-1268	
09	22-30-3099	A-42375-1112	27	42375-1130	A-42375-1130	09	42375-1251	27	42375-1269	
10	42375-1113	A-42375-1113	28	42375-1131	A-42375-1131	10	42375-1252	28	42375-1270	
11	42375-1114	A-42375-1114	29	42375-1132	A-42375-1132	11	42375-1253	29	42375-1271	
12	42375-1115	A-42375-1115	30	42375-1133	A-42375-1133	12	42375-1254	30	42375-1272	
13	42375-1116	A-42375-1116	31	42375-1134	A-42375-1134	13	42375-1255	31	42375-1273	
14	42375-1117	A-42375-1117	32	42375-1135	A-42375-1135	14	42375-1256	32	42375-1274	
15	42375-1118	A-42375-1118	33	42375-1136	A-42375-1136	15	42375-1257	33	42375-1275	
16	42375-1119	A-42375-1119	34	42375-1137	A-42375-1137	16	42375-1258	34	42375-1276	
17	42375-1120	A-42375-1120	35	42375-1138	A-42375-1138	17	42375-1259	35	42375-1277	
18	42375-1121	A-42375-1121	36	42375-1139	A-42375-1139	18	42375-1260	36	42375-1278	
19	42375-1122	A-42375-1122				19	42375-1261			
REV: <b>T15</b>		<u>ECR/ECN INFORMATION:</u> EC No.: <b>UCP2009-1249</b> DATE: <b>12/2/2008</b>			<u>TITLE:</u> <b>KK 100 HEADER ASSY FLAT VERTICAL BREAKAWAY</b>				<u>SHEET No.</u> <b>- 14 -</b>	
<u>DOCUMENT NUMBER:</u> <b>SD- 42375-001</b>				<u>CREATED / REVISED BY:</u> <b>MKIPPER</b>		<u>CHECKED BY:</u> <b>JBELL</b>		<u>APPROVED BY:</u> <b>FSMITH</b>		

ENG. NO: 42375-1349/1382				ENG. NO: 42375-1515/1548					
HEADER NUMBER:		42312-0036		HEADER NUMBER:		42312-0036			
PIN NUMBER:		42663-ABA154		PIN NUMBER:		42663-ABB208			
PIN LENGTH: L		.455 / 11.56		PIN LENGTH: L		.455 / 11.56			
MATING LENGTH: M		.230 / 5.84		MATING LENGTH: M		.230 / 5.84			
GOLD POINT: G		N/A		GOLD POINT: G		.140 / 3.56			
PC TAIL LENGTH: P		.135 / 3.43		PC TAIL LENGTH: P		.135 / 3.43			
TIN: T		OVERALL		TIN: T		.100 / 2.54			
CKTS:		3-36		CKTS:		3-36			
KINKS:		SMES-42003		KINKS:		SMES-42003			
VOIDED CKTS:		2		VOIDED CKTS:		2			
PACKAGING:		BULK PK-40873-0041		PACKAGING:		BULK PK-40873-0041			
CKTS	ITEM NUMBER	CKTS	ITEM NUMBER	CKTS	ITEM NUMBER	CKTS	ITEM NUMBER		
02		20	42375-1366	02		20	42375-1532		
03	42375-1349	21	42375-1367	03	42375-1515	21	42375-1533		
04	42375-1350	22	42375-1368	04	42375-1516	22	42375-1534		
05	42375-1351	23	42375-1369	05	42375-1517	23	42375-1535		
06	42375-1352	24	42375-1370	06	42375-1518	24	42375-1536		
07	42375-1353	25	42375-1371	07	42375-1519	25	42375-1537		
08	42375-1354	26	42375-1372	08	42375-1520	26	42375-1538		
09	42375-1355	27	42375-1373	09	42375-1521	27	42375-1539		
10	42375-1356	28	42375-1374	10	42375-1522	28	42375-1540		
11	42375-1357	29	42375-1375	11	42375-1523	29	42375-1541		
12	42375-1358	30	42375-1376	12	42375-1524	30	42375-1542		
13	42375-1359	31	42375-1377	13	42375-1525	31	42375-1543		
14	42375-1360	32	42375-1378	14	42375-1526	32	42375-1544		
15	42375-1361	33	42375-1379	15	42375-1527	33	42375-1545		
16	42375-1362	34	42375-1380	16	42375-1528	34	42375-1546		
17	42375-1363	35	42375-1381	17	42375-1529	35	42375-1547		
18	42375-1364	36	42375-1382	18	42375-1530	36	42375-1548		
19	42375-1365			19	42375-1531				
REV: <b>T15</b>		ECR/ECN INFORMATION: EC No.: <b>UCP2009-1249</b> DATE: <b>12/2/2008</b>		TITLE: <b>KK 100 HEADER ASSY FLAT VERTICAL BREAKAWAY</b>				SHEET No. <b>- 15 -</b>	
DOCUMENT NUMBER: <b>SD- 42375-001</b>				CREATED / REVISED BY: <b>MKIPPER</b>		CHECKED BY: <b>JBELL</b>		APPROVED BY: <b>FSMITH</b>	
TEMPLATE FILENAME: PRODUCT_SPEC(SIZE_A)(V.1).DOC									

ENG. NO: 42375-1720/1753				ENG. NO: 42375-1855/1889					
HEADER NUMBER:		42312-0036		HEADER NUMBER:		42312-0036			
PIN NUMBER:		42663-ABB208		PIN NUMBER:		42663-CJA154			
PIN LENGTH: L		.455 / 11.56		PIN LENGTH: L		.700 / 17.78			
MATING LENGTH: M		.240 / 6.09		MATING LENGTH: M		.488 / 12.40			
GOLD POINT: G		.140 / 3.56		GOLD POINT: G		N/A			
PC TAIL LENGTH: P		.125 / 3.18		PC TAIL LENGTH: P		.122 / 3.10			
TIN: T		.100 / 2.54		TIN: T		OVERALL			
CKTS:		3-36		CKTS:		2-36			
KINKS:		NO		KINKS:		NO			
VOIDED CKTS:		3		VOIDED CKTS:		NONE			
PACKAGING:		BULK PK-40873-0041		PACKAGING:		BULK PK-40873-0041			
CKTS	ITEM NUMBER	CKTS	ITEM NUMBER	CKTS	ITEM NUMBER	CKTS	ITEM NUMBER		
02		20	42375-1737	02	42375-1855	20	42375-1873		
03	42375-1720	21	42375-1738	03	42375-1856	21	42375-1874		
04	42375-1721	22	42375-1739	04	42375-1857	22	42375-1875		
05	42375-1722	23	42375-1740	05	42375-1858	23	42375-1876		
06	42375-1723	24	42375-1741	06	42375-1859	24	42375-1877		
07	42375-1724	25	42375-1742	07	42375-1860	25	42375-1878		
08	42375-1725	26	42375-1743	08	42375-1861	26	42375-1879		
09	42375-1726	27	42375-1744	09	42375-1862	27	42375-1880		
10	42375-1727	28	42375-1745	10	42375-1863	28	42375-1881		
11	42375-1728	29	42375-1746	11	42375-1864	29	42375-1882		
12	42375-1729	30	42375-1747	12	42375-1865	30	42375-1883		
13	42375-1730	31	42375-1748	13	42375-1866	31	42375-1884		
14	42375-1731	32	42375-1749	14	42375-1867	32	42375-1885		
15	42375-1732	33	42375-1750	15	42375-1868	33	42375-1886		
16	42375-1733	34	42375-1751	16	42375-1869	34	42375-1887		
17	42375-1734	35	42375-1752	17	42375-1870	35	42375-1888		
18	42375-1735	36	42375-1753	18	42375-1871	36	42375-1889		
19	42375-1736			19	42375-1872				
REV: <b>T15</b>		ECR/ECN INFORMATION: EC No.: UCP2009-1249 DATE: 12/2/2008		TITLE: <b>KK 100 HEADER ASSY FLAT VERTICAL BREAKAWAY</b>				SHEET No. <b>- 16 -</b>	
DOCUMENT NUMBER: <b>SD- 42375-001</b>				CREATED / REVISED BY: <b>MKIPPER</b>		CHECKED BY: <b>JBELL</b>		APPROVED BY: <b>FSMITH</b>	



ENG. NO: 42375-1922/1956				ENG. NO: 42375-2246/2275					
HEADER NUMBER:		42312-0036		HEADER NUMBER:		42312-0036			
PIN NUMBER:		42663-AEA154		PIN NUMBER:		42663-ABA154			
PIN LENGTH: L		.470 / 11.94		PIN LENGTH: L		.455 / 11.56			
MATING LENGTH: M		.190 / 4.83		MATING LENGTH: M		.240 / 6.09			
GOLD POINT: G		N/A		GOLD POINT: G		N/A			
PC TAIL LENGTH: P		.190 / 4.83		PC TAIL LENGTH: P		.125 / 3.18			
TIN: T		.200 / 5.08		TIN: T		OVERALL			
CKTS:		2-36		CKTS:		7-36			
KINKS:		NO		KINKS:		NO			
VOIDED CKTS:		NONE		VOIDED CKTS:		2,7			
PACKAGING:		BULK PK-40873-0041		PACKAGING:		BULK PK-40873-0041			
CKTS	ITEM NUMBER	CKTS	ITEM NUMBER	CKTS	ITEM NUMBER	CKTS	ITEM NUMBER		
02	42375-1922	20	42375-1940	02		20	42375-2259		
03	42375-1923	21	42375-1941	03		21	42375-2260		
04	42375-1924	22	42375-1942	04		22	42375-2261		
05	42375-1925	23	42375-1943	05		23	42375-2262		
06	42375-1926	24	42375-1944	06		24	42375-2263		
07	42375-1927	25	42375-1945	07	42375-2246	25	42375-2264		
08	42375-1928	26	42375-1946	08	42375-2247	26	42375-2265		
09	42375-1929	27	42375-1947	09	42375-2248	27	42375-2266		
10	42375-1930	28	42375-1948	10	42375-2249	28	42375-2267		
11	42375-1931	29	42375-1949	11	42375-2250	29	42375-2268		
12	42375-1932	30	42375-1950	12	42375-2251	30	42375-2269		
13	42375-1933	31	42375-1951	13	42375-2252	31	42375-2270		
14	42375-1934	32	42375-1952	14	42375-2253	32	42375-2271		
15	42375-1935	33	42375-1953	15	42375-2254	33	42375-2272		
16	42375-1936	34	42375-1954	16	42375-2255	34	42375-2273		
17	42375-1937	35	42375-1955	17	42375-2256	35	42375-2274		
18	42375-1938	36	42375-1956	18	42375-2257	36	42375-2275		
19	42375-1939			19	42375-2258				
REV: <b>T15</b>		ECR/ECN INFORMATION: EC No.: <b>UCP2009-1249</b> DATE: <b>12/2/2008</b>		TITLE: <b>KK 100 HEADER ASSY FLAT VERTICAL BREAKAWAY</b>				SHEET No. <b>- 17 -</b>	
DOCUMENT NUMBER: <b>SD- 42375-001</b>				CREATED / REVISED BY: <b>MKIPPER</b>		CHECKED BY: <b>JBELL</b>		APPROVED BY: <b>FSMITH</b>	
TEMPLATE FILENAME: PRODUCT_SPEC(SIZE_A)(V.1).DOC									

ENG. NO: 42375-2486/2520				ENG. NO: 42375-2521/2555					
HEADER NUMBER:		42312-0036		HEADER NUMBER:		42312-0036			
PIN NUMBER:		42663-AFB208		PIN NUMBER:		42663-AFB228			
PIN LENGTH: L		.475 / 12.07		PIN LENGTH: L		.475 / 12.07			
MATING LENGTH: M		.232 / 5.89		MATING LENGTH: M		.232 / 5.89			
GOLD POINT: G		.150 / 3.81		GOLD POINT: G		.150 / 3.81			
PC TAIL LENGTH: P		.153 / 3.89		PC TAIL LENGTH: P		.153 / 3.89			
TIN: T		.100 / 2.54		TIN: T		.100 / 2.54			
CKTS:		2-36		CKTS:		2-36			
KINKS:		NO		KINKS:		NO			
VOIDED CKTS:		NONE		VOIDED CKTS:		NONE			
PACKAGING:		BULK PK-40873-0041		PACKAGING:		BULK PK-40873-0041			
CKTS	ITEM NUMBER	CKTS	ITEM NUMBER	CKTS	ITEM NUMBER	CKTS	ITEM NUMBER		
02	42375-2486	19	42375-2503	02	42375-2521	20	42375-2539		
03	42375-2487	20	42375-2504	03	42375-2522	21	42375-2540		
	68300-2008	21	42375-2505	04	42375-2523	22	42375-2541		
04	42375-2488	22	42375-2506	05	42375-2524	23	42375-2542		
05	42375-2489	23	42375-2507	06	42375-2525	24	42375-2543		
06	42375-2490	24	42375-2508	07	42375-2526	25	42375-2544		
07	42375-2491	25	42375-2509	08	42375-2527	26	42375-2545		
08	42375-2492	26	42375-2510	09	42375-2528	27	42375-2546		
09	42375-2493	27	42375-2511	10	42375-2529	28	42375-2547		
10	42375-2494	28	42375-2512	11	42375-2530	29	42375-2548		
11	42375-2495	29	42375-2513	12	42375-2531	30	42375-2549		
12	42375-2496	30	42375-2514	13	42375-2532	31	42375-2550		
13	42375-2497	31	42375-2515	14	42375-2533	32	42375-2551		
14	42375-2498	32	42375-2516	15	42375-2534	33	42375-2552		
15	42375-2499	33	42375-2517	16	42375-2535	34	42375-2553		
16	42375-2500	34	42375-2518	17	42375-2536	35	42375-2554		
17	42375-2501	35	42375-2519	18	42375-2537	36	42375-2555		
18	42375-2502	36	42375-2520	19	42375-2538				
REV: <b>T15</b>		<u>ECR/ECN INFORMATION:</u> EC No.: <b>UCP2009-1249</b> DATE: <b>12/2/2008</b>		<u>TITLE:</u> <b>KK 100 HEADER ASSY FLAT VERTICAL BREAKAWAY</b>				<u>SHEET No.</u> <b>- 18 -</b>	
<u>DOCUMENT NUMBER:</u> <b>SD- 42375-001</b>				<u>CREATED / REVISED BY:</u> <b>MKIPPER</b>		<u>CHECKED BY:</u> <b>JBELL</b>		<u>APPROVED BY:</u> <b>FSMITH</b>	
<small>TEMPLATE FILENAME: PRODUCT_SPEC(SIZE_A)(V.1).DOC</small>									

ENG. NO: 42375-2801/2835				ENG. NO: 42375-2836/2870			
HEADER NUMBER:		42312-0036		HEADER NUMBER:		42312-0036	
PIN NUMBER:		42663-HDB228		PIN NUMBER:		42663-EMA154	
PIN LENGTH: L		1.200 / 30.48		PIN LENGTH: L		.925 / 23.50	
MATING LENGTH: M		1.000 / 25.40		MATING LENGTH: M		.625 / 15.88	
GOLD POINT: G		.200 / 5.08		GOLD POINT: G		N/A	
PC TAIL LENGTH: P		.110 / 2.79		PC TAIL LENGTH: P		.210 / 5.33	
TIN: T		.200 / 5.08		TIN: T		OVERALL	
CKTS:		2-36		CKTS:		2-36	
KINKS:		NO		KINKS:		NO	
VOIDED CKTS:		NONE		VOIDED CKTS:		NONE	
PACKAGING:		BULK PK-40873-0043		PACKAGING:		BULK PK-40873-0041	
CKTS	ITEM NUMBER	CKTS	ITEM NUMBER	CKTS	ITEM NUMBER	CKTS	ITEM NUMBER
02	42375-2801	20	42375-2819	02	42375-2836	20	42375-2854
03	42375-2802	21	42375-2820	03	42375-2837	21	42375-2855
04	42375-2803	22	42375-2821	04	42375-2838	22	42375-2856
05	42375-2804	23	42375-2822	05	42375-2839	23	42375-2857
06	42375-2805	24	42375-2823	06	42375-2840	24	42375-2858
07	42375-2806	25	42375-2824	07	42375-2841	25	42375-2859
08	42375-2807	26	42375-2825	08	42375-2842	26	42375-2860
09	42375-2808	27	42375-2826	09	42375-2843	27	42375-2861
10	42375-2809	28	42375-2827	10	42375-2844	28	42375-2862
11	42375-2810	29	42375-2828	11	42375-2845	29	42375-2863
12	42375-2811	30	42375-2829	12	42375-2846	30	42375-2864
13	42375-2812	31	42375-2830	13	42375-2847	31	42375-2865
14	42375-2813	32	42375-2831	14	42375-2848	32	42375-2866
15	42375-2814	33	42375-2832	15	42375-2849	33	42375-2867
16	42375-2815	34	42375-2833	16	42375-2850	34	42375-2868
17	42375-2816	35	42375-2834	17	42375-2851	35	42375-2869
18	42375-2817	36	42375-2835	18	42375-2852	36	42375-2870
19	42375-2818			19	42375-2853		

REV:	<u>ECR/ECN INFORMATION:</u>	<u>TITLE:</u>	<u>SHEET No.</u>
<b>T15</b>	EC No.: UCP2009-1249	<b>KK 100 HEADER ASSY FLAT VERTICAL BREAKAWAY</b>	<b>- 19 -</b>
	DATE: 12/2/2008		
<u>DOCUMENT NUMBER:</u>	<u>CREATED / REVISED BY:</u>	<u>CHECKED BY:</u>	<u>APPROVED BY:</u>
<b>SD- 42375-001</b>	<b>MKIPPER</b>	<b>JBELL</b>	<b>FSMITH</b>

TEMPLATE FILENAME: PRODUCT\_SPEC(SIZE\_A)(V.1).DOC

ENG. NO: 42375-3044/3078				ENG. NO: 42375-3114/3148				
HEADER NUMBER:		42312-0036		HEADER NUMBER:		42312-0036		
PIN NUMBER:		42663-KHB208		PIN NUMBER:		42663-BXA154		
PIN LENGTH: L		1.430 / 36.32		PIN LENGTH: L		.645 / 16.38		
MATING LENGTH: M		.867 / 22.02		MATING LENGTH: M		.426 / 10.82		
GOLD POINT: G		.200 / 5.08		GOLD POINT: G		N/A		
PC TAIL LENGTH: P		.473 / 12.01		PC TAIL LENGTH: P		.124 / 3.15		
TIN: T		.200 / 5.08		TIN: T		OVERALL		
CKTS:		2-36		CKTS:		2-36		
KINKS:		NO		KINKS:		NO		
VOIDED CKTS:		NONE		VOIDED CKTS:		NONE		
PACKAGING:		BULK PK-40873-0043		PACKAGING:		BULK PK-40873-0041		
CKTS	ITEM NUMBER	CKTS	ITEM NUMBER	CKTS	ITEM NUMBER	CKTS	ITEM NUMBER	
02	42375-3044	20	42375-3062	02	42375-3114	20	42375-3132	
03	42375-3045	21	42375-3063	03	42375-3115	21	42375-3133	
04	42375-3046	22	42375-3064	04	42375-3116	22	42375-3134	
05	42375-3047	23	42375-3065	05	42375-3117	23	42375-3135	
06	42375-3048	24	42375-3066	06	42375-3118	24	42375-3136	
07	42375-3049	25	42375-3067	07	42375-3119	25	42375-3137	
08	42375-3050	26	42375-3068	08	42375-3120	26	42375-3138	
09	42375-3051	27	42375-3069	09	42375-3121	27	42375-3139	
10	42375-3052	28	42375-3070	10	42375-3122	28	42375-3140	
11	42375-3053	29	42375-3071	11	42375-3123	29	42375-3141	
12	42375-3054	30	42375-3072	12	42375-3124	30	42375-3142	
13	42375-3055	31	42375-3073	13	42375-3125	31	42375-3143	
14	42375-3056	32	42375-3074	14	42375-3126	32	42375-3144	
15	42375-3057	33	42375-3075	15	42375-3127	33	42375-3145	
16	42375-3058	34	42375-3076	16	42375-3128	34	42375-3146	
17	42375-3059	35	42375-3077	17	42375-3129	35	42375-3147	
18	42375-3060	36	42375-3078	18	42375-3130	36	42375-3148	
19	42375-3061			19	42375-3131			
REV:	<u>ECR/ECN INFORMATION:</u>		<u>TITLE:</u>				<u>SHEET No.</u>	
<b>T15</b>	EC No.: UCP2009-1249		KK 100 HEADER ASSY FLAT VERTICAL BREAKAWAY				- 20 -	
	DATE: 12/2/2008							
<u>DOCUMENT NUMBER:</u>			<u>CREATED / REVISED BY:</u>		<u>CHECKED BY:</u>		<u>APPROVED BY:</u>	
SD- 42375-001			MKIPPER		JBELL		FSMITH	
<small>TEMPLATE FILENAME: PRODUCT_SPEC(SIZE_A)(V.1).DOC</small>								

**42375**

ENG. NO: 42375-3149 / 3183				ENG. NO: 42375-3184 / 3218				ENG. NO: 42375-3219 / 3253			
HEADER NUMBER:		42312-0036		HEADER NUMBER:		42312-0036		HEADER NUMBER:		42312-0036	
PIN NUMBER:		42663-BEB208		PIN NUMBER:		42663-GNB208		PIN NUMBER:		42663-BPA154	
PIN LENGTH: L		.575 / 14.61		PIN LENGTH: L		1.140 / 28.96		PIN LENGTH: L		.620 / 15.75	
MATING LENGTH: M		.350 / 8.89		MATING LENGTH: M		.913 / 23.20		MATING LENGTH: M		.280 / 7.11	
GOLD POINT: G		.200 / 5.08		GOLD POINT: G		.200 / 5.08		GOLD POINT: G		NA	
PC TAIL LENGTH: P		.135 / 3.43		PC TAIL LENGTH: P		.137 / 3.48		PC TAIL LENGTH: P		.250 / 6.35	
TIN: T		.200 / 5.08		TIN: T		.200 / 5.08		TIN: T		OVERALL	
CKTS:		2-36		CKTS:		2-36		CKTS:		2-36	
KINKS:		NO		KINKS:		NO		KINKS:		NO	
VOIDED CKTS:		NONE		VOIDED CKTS:		NONE		VOIDED CKTS:		NONE	
PACKAGING:		BULK PK-40873-0041		PACKAGING:		BULK PK-40873-0043		PACKAGING:		BULK PK-40873-0041	
CKTS	ITEM NUMBER	CKTS	ITEM NUMBER	CKTS	ITEM NUMBER	CKTS	ITEM NUMBER	CKTS	ITEM NUMBER	CKTS	ITEM NUMBER
02	42375-3149	20	42375-3167	02	42375-3184	20	42375-3202	02	42375-3219	20	42375-3237
03	42375-3150	21	42375-3168	03	42375-3185	21	42375-3203	03	42375-3220	21	42375-3238
04	42375-3151	22	42375-3169	04	42375-3186	22	42375-3204	04	42375-3221	22	42375-3239
05	42375-3152	23	42375-3170	05	42375-3187	23	42375-3205	05	42375-3222	23	42375-3240
06	42375-3153	24	42375-3171	06	42375-3188	24	42375-3206	06	42375-3223	24	42375-3241
07	42375-3154	25	42375-3172	07	42375-3189	25	42375-3207	07	42375-3224	25	42375-3242
08	42375-3155	26	42375-3173	08	42375-3190	26	42375-3208	08	42375-3225	26	42375-3243
09	42375-3156	27	42375-3174	09	42375-3191	27	42375-3209	09	42375-3226	27	42375-3244
10	42375-3157	28	42375-3175	10	42375-3192	28	42375-3210	10	42375-3227	28	42375-3245
11	42375-3158	29	42375-3176	11	42375-3193	29	42375-3211	11	42375-3228	29	42375-3246
12	42375-3159	30	42375-3177	12	42375-3194	30	42375-3212	12	42375-3229	30	42375-3247
13	42375-3160	31	42375-3178	13	42375-3195	31	42375-3213	13	42375-3230	31	42375-3248
14	42375-3161	32	42375-3179	14	42375-3196	32	42375-3214	14	42375-3231	32	42375-3249
15	42375-3162	33	42375-3180	15	42375-3197	33	42375-3215	15	42375-3232	33	42375-3250
16	42375-3163	34	42375-3181	16	42375-3198	34	42375-3216	16	42375-3233	34	42375-3251
17	42375-3164	35	42375-3182	17	42375-3199	35	42375-3217	17	42375-3234	35	42375-3252
18	42375-3165	36	42375-3183	18	42375-3200	36	42375-3218	18	42375-3235	36	42375-3253
19	42375-3166			19	42375-3201			19	42375-3236		

REV: <b>T15</b>	ECR/ECN INFORMATION: EC No.: <b>UCP2009-1249</b> DATE: <b>12/2/2008</b>	TITLE: <b>KK 100 HEADER ASSY FLAT VERTICAL BREAKAWAY</b>	SHEET No. <b>- 21 -</b>
DOCUMENT NUMBER: <b>SD- 42375-001</b>	CREATED / REVISED BY: <b>MKIPPER</b>	CHECKED BY: <b>JBELL</b>	APPROVED BY: <b>FSMITH</b>

TEMPLATE FILENAME: PRODUCT\_SPEC(SIZE\_A)(V.1).DOC

ENG. NO: 42375-3254 / 3288				ENG. NO: 42375-3289 / 3323				ENG. NO: 42375-3324 / 3358			
HEADER NUMBER:		42312-0036		HEADER NUMBER:		42312-0036		HEADER NUMBER:		42312-0036	
PIN NUMBER:		42663-DMA154		PIN NUMBER:		42663-FNA154		PIN NUMBER:		42663-CCA154	
PIN LENGTH: L		.820 / 20.83		PIN LENGTH: L		1.035 / 26.29		PIN LENGTH: L		.670 / 17.02	
MATING LENGTH: M		.590 / 14.99		MATING LENGTH: M		.358 / 9.09		MATING LENGTH: M		.440 / 11.18	
GOLD POINT: G		NA		GOLD POINT: G		NA		GOLD POINT: G		NA	
PC TAIL LENGTH: P		.140 / 3.56		PC TAIL LENGTH: P		.587 / 14.91		PC TAIL LENGTH: P		.140 / 3.56	
TIN: T		OVERALL		TIN: T		OVERALL		TIN: T		OVERALL	
CKTS:		2-36		CKTS:		2-36		CKTS:		2-36	
KINKS:		NO		KINKS:		NO		KINKS:		SMES-42003	
VOIDED CKTS:		NONE		VOIDED CKTS:		NONE		VOIDED CKTS:		NONE	
PACKAGING:		BULK PK-40873-0041		PACKAGING:		BULK PK-40873-0043		PACKAGING:		BULK PK-40873-0041	
CKTS	ITEM NUMBER	CKTS	ITEM NUMBER	CKTS	ITEM NUMBER	CKTS	ITEM NUMBER	CKTS	ITEM NUMBER	CKTS	ITEM NUMBER
02	42375-3254	20	42375-3272	02	42375-3289	20	42375-3307	02	42375-3324	20	42375-3342
03	42375-3255	21	42375-3273	03	42375-3290	21	42375-3308	03	42375-3325	21	42375-3343
04	42375-3256	22	42375-3274	04	42375-3291	22	42375-3309	04	42375-3326	22	42375-3344
05	42375-3257	23	42375-3275	05	42375-3292	23	42375-3310	05	42375-3327	23	42375-3345
06	42375-3258	24	42375-3276	06	42375-3293	24	42375-3311	06	42375-3328	24	42375-3346
07	42375-3259	25	42375-3277	07	42375-3294	25	42375-3312	07	42375-3329	25	42375-3347
08	42375-3260	26	42375-3278	08	42375-3295	26	42375-3313	08	42375-3330	26	42375-3348
09	42375-3261	27	42375-3279	09	42375-3296	27	42375-3314	09	42375-3331	27	42375-3349
10	42375-3262	28	42375-3280	10	42375-3297	28	42375-3315	10	42375-3332	28	42375-3350
11	42375-3263	29	42375-3281	11	42375-3298	29	42375-3316	11	42375-3333	29	42375-3351
12	42375-3264	30	42375-3282	12	42375-3299	30	42375-3317	12	42375-3334	30	42375-3352
13	42375-3265	31	42375-3283	13	42375-3300	31	42375-3318	13	42375-3335	31	42375-3353
14	42375-3266	32	42375-3284	14	42375-3301	32	42375-3319	14	42375-3336	32	42375-3354
15	42375-3267	33	42375-3285	15	42375-3302	33	42375-3320	15	42375-3337	33	42375-3355
16	42375-3268	34	42375-3286	16	42375-3303	34	42375-3321	16	42375-3338	34	42375-3356
17	42375-3269	35	42375-3287	17	42375-3304	35	42375-3322	17	42375-3339	35	42375-3357
18	42375-3270	36	42375-3288	18	42375-3305	36	42375-3323	18	42375-3340	36	42375-3358
19	42375-3271			19	42375-3306			19	42375-3341		
REV: <b>T15</b>		<u>ECR/ECN INFORMATION:</u> EC No.: <b>UCP2009-1249</b> DATE: <b>12/2/2008</b>		<u>TITLE:</u> <b>KK 100 HEADER ASSY FLAT VERTICAL BREAKAWAY</b>				<u>SHEET No.</u> <b>- 22 -</b>			
<u>DOCUMENT NUMBER:</u> <b>SD- 42375-001</b>				<u>CREATED / REVISED BY:</u> <b>MKIPPER</b>		<u>CHECKED BY:</u> <b>JBELL</b>		<u>APPROVED BY:</u> <b>FSMITH</b>			
<small>TEMPLATE FILENAME: PRODUCT_SPEC(SIZE_A)IV.1).DOC</small>											

ENG. NO: 42375-3359 / 3393				ENG. NO: 42375-3394 / 3428				ENG. NO: 42375-3429 / 3463			
HEADER NUMBER:		42312-0036		HEADER NUMBER:		42312-0036		HEADER NUMBER:		42312-0036	
PIN NUMBER:		42663-ABB228		PIN NUMBER:		42663-EZB208		PIN NUMBER:		42663-ARA154	
PIN LENGTH: L		.455 / 11.56		PIN LENGTH: L		.970/24.64		PIN LENGTH: L		.520/13.21	
MATING LENGTH: M		.170 / 4.32		MATING LENGTH: M		.780/19.81		MATING LENGTH: M		.386/9.80	
GOLD POINT: G		.100 / 2.54		GOLD POINT: G		.200/5.08		GOLD POINT: G		N/A	
PC TAIL LENGTH: P		.195 / 4.95		PC TAIL LENGTH: P		.100/ 2.54		PC TAIL LENGTH: P		.044/1.12	
TIN: T		.100 / 2.54		TIN: T		.200/5.08		TIN: T		OVERALL	
CKTS:		2-36		CKTS:		2-36		CKTS:		2-36	
KINKS:		NO		KINKS:		NO		KINKS:		NO	
VOIDED CKTS:		NONE		VOIDED CKTS:		NONE		VOIDED CKTS:		NONE	
PACKAGING:		BULK PK-40873-0041		PACKAGING:		BULK PK-40873-0043		PACKAGING:		BULK PK-40873-0041	
CKTS	ITEM NUMBER	CKTS	ITEM NUMBER	CKTS	ITEM NUMBER	CKTS	ITEM NUMBER	CKTS	ITEM NUMBER	CKTS	ITEM NUMBER
02	42375-3359	20	42375-3377	02	42375-3394	20	42375-3412	02	42375-3429	20	42375-3447
03	42375-3360	21	42375-3378	03	42375-3395	21	42375-3413	03	42375-3430	21	42375-3448
04	42375-3361	22	42375-3379	04	42375-3396	22	42375-3414	04	42375-3431	22	42375-3449
05	42375-3362	23	42375-3380	05	42375-3397	23	42375-3415	05	42375-3432	23	42375-3450
06	42375-3363	24	42375-3381	06	42375-3398	24	42375-3416	06	42375-3433	24	42375-3451
07	42375-3364	25	42375-3382	07	42375-3399	25	42375-3417	07	42375-3434	25	42375-3452
08	42375-3365	26	42375-3383	08	42375-3400	26	42375-3418	08	42375-3435	26	42375-3453
09	42375-3366	27	42375-3384	09	42375-3401	27	42375-3419	09	42375-3436	27	42375-3454
10	42375-3367	28	42375-3385	10	42375-3402	28	42375-3420	10	42375-3437	28	42375-3455
11	42375-3368	29	42375-3386	11	42375-3403	29	42375-3421	11	42375-3438	29	42375-3456
12	42375-3369	30	42375-3387	12	42375-3404	30	42375-3422	12	42375-3439	30	42375-3457
13	42375-3370	31	42375-3388	13	42375-3405	31	42375-3423	13	42375-3440	31	42375-3458
14	42375-3371	32	42375-3389	14	42375-3406	32	42375-3424	14	42375-3441	32	42375-3459
15	42375-3372	33	42375-3390	15	42375-3407	33	42375-3425	15	42375-3442	33	42375-3460
16	42375-3373	34	42375-3391	16	42375-3408	34	42374-3426	16	42375-3443	34	42374-3461
17	42375-3374	35	42375-3392	17	42375-3409	35	42375-3427	17	42375-3444	35	42375-3462
18	42375-3375	36	42375-3393	18	42375-3410	36	42375-3428	18	42375-3445	36	42375-3463
19	42375-3376			19	42375-3411			19	42375-3446		

REV:	<u>ECR/ECN INFORMATION:</u>	<u>TITLE:</u>	<u>SHEET No.</u>
<b>T15</b>	EC No.: <b>UCP2009-1249</b>	<b>KK 100 HEADER ASSY FLAT VERTICAL BREAKAWAY</b>	<b>- 23 -</b>
	DATE: <b>12/2/2008</b>		
<u>DOCUMENT NUMBER:</u>	<u>CREATED / REVISED BY:</u>	<u>CHECKED BY:</u>	<u>APPROVED BY:</u>
<b>SD- 42375-001</b>	<b>MKIPPER</b>	<b>JBELL</b>	<b>FSMITH</b>

TEMPLATE FILENAME: PRODUCT\_SPEC(SIZE\_A)(V.1).DOC

ENG. NO: 42375-3464 / 3498				ENG. NO: 42375-3499/3533				ENG. NO: 42375-3534/3568			
HEADER NUMBER:		42312-0036		HEADER NUMBER:		42312-0036		HEADER NUMBER:		42312-0036	
PIN NUMBER:		42663-CJA154		PIN NUMBER:		42663-ETA154		PIN NUMBER:		42663-AWB208	
PIN LENGTH: L		.700/17.78		PIN LENGTH: L		.950/24.13		PIN LENGTH: L		.535/13.59	
MATING LENGTH: M		.500/12.70		MATING LENGTH: M		.750/19.05		MATING LENGTH: M		.235/5.97	
GOLD POINT: G		N/A		GOLD POINT: G		N/A		GOLD POINT: G		.200/5.08	
PC TAIL LENGTH: P		.110/2.79		PC TAIL LENGTH: P		.110/2.79		PC TAIL LENGTH: P		.210/5.33	
TIN: T		OVERALL		TIN: T		OVERALL		TIN: T		.100/2.54	
CKTS:		2-36		CKTS:		2-36		CKTS:		2-36	
KINKS:		NO		KINKS:		NO		KINKS:		NO	
VOIDED CKTS:		# 2		VOIDED CKTS:		NONE		VOIDED CKTS:		NONE	
PACKAGING:		BULK PK-40873-0041		PACKAGING:		BULK PK-40873-0043		PACKAGING:		BULK PK-40873-0041	
CKTS	ITEM NUMBER	CKTS	ITEM NUMBER	CKTS	ITEM NUMBER	CKTS	ITEM NUMBER	CKTS	ITEM NUMBER	CKTS	ITEM NUMBER
02	42375-3464	20	42375-3482	02	42375-3499	20	42375-3517	02	42375-3534	20	42375-3552
03	42375-3465	21	42375-3483	03	42375-3500	21	42375-3518	03	42375-3535	21	42375-3553
04	42375-3466	22	42375-3484	04	42375-3501	22	42375-3519	04	42375-3536	22	42375-3554
05	42375-3467	23	42375-3485	05	42375-3502	23	42375-3520	05	42375-3537	23	42375-3555
06	42375-3468	24	42375-3486	06	42375-3503	24	42375-3521	06	42375-3538	24	42375-3556
07	42375-3469	25	42375-3487	07	42375-3504	25	42375-3522	07	42375-3539	25	42375-3557
08	42375-3470	26	42375-3488	08	42375-3505	26	42375-3523	08	42375-3540	26	42375-3558
09	42375-3471	27	42375-3489	09	42375-3506	27	42375-3524	09	42375-3541	27	42375-3559
10	42375-3472	28	42375-3490	10	42375-3507	28	42375-3525	10	42375-3542	28	42375-3560
11	42375-3473	29	42375-3491	11	42375-3508	29	42375-3526	11	42375-3543	29	42375-3561
12	42375-3474	30	42375-3492	12	42375-3509	30	42375-3527	12	42375-3544	30	42375-3562
13	42375-3475	31	42375-3493	13	42375-3510	31	42375-3528	13	42375-3545	31	42375-3563
14	42375-3476	32	42375-3494	14	42375-3511	32	42375-3529	14	42375-3546	32	42375-3564
15	42375-3477	33	42375-3495	15	42375-3512	33	42375-3530	15	42375-3547	33	42375-3565
16	42375-3478	34	42375-3496	16	42375-3513	34	42375-3531	16	42375-3548	34	42375-3566
17	42375-3479	35	42375-3497	17	42375-3514	35	42375-3532	17	42375-3549	35	42375-3567
18	42375-3480	36	42375-3498	18	42375-3515	36	42375-3533	18	42375-3550	36	42375-3568
19	42375-3481			19	42375-3516			19	42375-3551		
REV: <b>T15</b>		<u>ECR/ECN INFORMATION:</u> EC No.: <b>UCP2009-1249</b> DATE: <b>12/2/2008</b>		<u>TITLE:</u> <b>KK 100 HEADER ASSY FLAT VERTICAL BREAKAWAY</b>				<u>SHEET No.</u> <b>- 24 -</b>			
<u>DOCUMENT NUMBER:</u> <b>SD- 42375-001</b>				<u>CREATED / REVISED BY:</u> <b>MKIPPER</b>		<u>CHECKED BY:</u> <b>JBELL</b>		<u>APPROVED BY:</u> <b>FSMITH</b>			
<small>TEMPLATE FILENAME: PRODUCT_SPEC(SIZE_A)(V.1).DOC</small>											



ENG. NO: A-42375-3569/3603

HEADER NUMBER:	42312-0036				
PIN NUMBER:	42663-ABB208				
PIN LENGTH: L	.455 / 11.56				
MATING LENGTH: M	.240 / 6.09				
GOLD POINT: G	.100 / 2.54				
PC TAIL LENGTH: P	.125 / 3.18				
TIN: T	.100 / 2.54				
CKTS:	4-36				
KINKS:	NO				
VOIDED CKTS:	5				
PACKAGING:	BULK PK-40873-0041				
CKTS	MATERIAL NUMBER	ENG NUMBER	CKTS	MATERIAL NUMBER	ENG NUMBER
02			20	423753587	42375-3587
03			21	423753588	42375-3588
04			22	423753589	42375-3589
05	423753572	42375-3572	23	423753590	42375-3590
06	423753573	42375-3573	24	423753591	42375-3591
07	423753574	42375-3574	25	423753592	42375-3592
08	423753575	42375-3575	26	423753593	42375-3593
09	423753576	42375-3576	27	423753594	42375-3594
10	423753577	42375-3577	28	423753595	42375-3595
11	423753578	42375-3578	29	423753596	42375-3596
12	423753579	42375-3579	30	423753597	42375-3597
13	423753580	42375-3580	31	423753598	42375-3598
14	423753581	42375-3581	32	423753599	42375-3599
15	423753582	42375-3582	33	423753600	42375-3600
16	423753583	42375-3583	34	423753601	42375-3601
17	423753584	42375-3584	35	423753602	42375-3602
18	423753585	42375-3585	36	423753603	42375-3603
19	423753586	42375-3586			

ENG. NO: A-42375-2974/3008

HEADER NUMBER:	42312-0036				
PIN NUMBER:	42663-FKB228				
PIN LENGTH: L	1.020 / 25.91				
MATING LENGTH: M	.805 / 20.45				
GOLD POINT: G	.200 / 5.08				
PC TAIL LENGTH: P	.125 / 3.18				
TIN: T	.200 / 5.08				
CKTS:	2-36				
KINKS:	NO				
VOIDED CKTS:	NONE				
PACKAGING:	BULK PK-40873-0043				
CKTS	MATERIAL NUMBER	ENG NUMBER	CKTS	MATERIAL NUMBER	ITEM NUMBER
02			20		
03			21		
04			22		
05	423752977	42375-2977	23		
06			24		
07			25		
08			26		
09			27		
10			28		
11			29		
12			30		
13			31		
14			32		
15			33		
16			34		
17			35		
18			36		
19					

REV:

**T15**ECR/ECN INFORMATION:

EC No.: UCP2009-1249

DATE: 12/2/2008

TITLE:**KK 100 HEADER ASSY  
FLAT VERTICAL  
BREAKAWAY**SHEET No.**- 25 -**DOCUMENT NUMBER:**SD- 42375-001**CREATED / REVISED BY:**MKIPPER**CHECKED BY:**JBELL**APPROVED BY:**FSMITH**

TEMPLATE FILENAME: PRODUCT\_SPEC(SIZE\_A)(V.1).DOC

ENG. NO: A-42375-3604/3637					
HEADER NUMBER:		42312-0036			
PIN NUMBER:		42663-AXA154			
PIN LENGTH: L		.540 / 13.72			
MATING LENGTH: M		.380 / 9.65			
GOLD POINT: G		N/A			
PC TAIL LENGTH: P		.070 / 1.78			
TIN: T		OVERALL			
CKTS:		3-36			
KINKS:		NO			
VOIDED CKTS:		2			
PACKAGING:		BULK PK-40873-0041			
CKTS	MATERIAL NUMBER	ENG NUMBER	CKTS	MATERIAL NUMBER	ENG NUMBER
02			20		
03	42375-3604		21		
04			22		
05			23		
06			24		
07			25		
08			26		
09			27		
10			28		
11			29		
12			30		
13			31		
14			32		
15			33		
16			34		
17			35		
18			36		
19					

ENG. NO: A-42375-3638/3658					
HEADER NUMBER:		42312-0036			
PIN NUMBER:		42663-ABA154			
PIN LENGTH: L		.455 / 11.56			
MATING LENGTH: M		.240 / 6.09			
GOLD POINT: G		N/A			
PC TAIL LENGTH: P		.125 / 3.18			
TIN: T		OVERALL			
CKTS:		2-36			
KINKS:		NO			
VOIDED CKTS:		2, 4, 6, 8, 10, 12, 14, 16			
PACKAGING:		BULK PK-40873-0041			
CKTS	MATERIAL NUMBER	ENG NUMBER	CKTS	MATERIAL NUMBER	ITEM NUMBER
02			20		
03			21		
04			22		
05			23		
06			24		
07			25		
08			26		
09			27		
10			28		
11			29		
12			30		
13			31		
14			32		
15			33		
16			34		
17	423753639	42375-3639	35		
18			36		
19					

<b>REV:</b>  <b>T15</b>	<u>ECR/ECN INFORMATION:</u>		<u>TITLE:</u>  <b>KK 100 HEADER ASSY FLAT VERTICAL BREAKAWAY</b>		<u>SHEET No.</u>  <b>- 26 -</b>
	<u>EC No.:</u>	<b>UCP2009-1249</b>			
	<u>DATE:</u>	<b>12/2/2008</b>			
<u>DOCUMENT NUMBER:</u> <b>SD- 42375-001</b>		<u>CREATED / REVISED BY:</u> <b>MKIPPER</b>	<u>CHECKED BY:</u> <b>JBELL</b>	<u>APPROVED BY:</u> <b>FSMITH</b>	
TEMPLATE FILENAME: PRODUCT_SPEC(SIZE_A)(V.1).DOC					

42375

ENG. NO: 42375-3659/3693					
HEADER NUMBER:		42312-0036			
PIN NUMBER:		42663-AXB208			
PIN LENGTH: L		.540 / 13.72			
MATING LENGTH: M		.250 / 6.35			
GOLD POINT: G		.140 / 3.56			
PC TAIL LENGTH: P		.200 / 5.08			
TIN: T		.135 / 3.43			
CKTS:		2-36			
KINKS:		NO			
VOIDED CKTS:		NONE			
PACKAGING:		BULK PK-40873-0041			
CKTS	MATERIAL NUMBER	ENG NUMBER	CKTS	MATERIAL NUMBER	ENG NUMBER
02	68300-2000	42375-3659	20		42375-3677
03	68300-2001	42375-3660	21		42375-3678
04		42375-3661	22		42375-3679
05	68300-2006	42375-3662	23		42375-3680
06		42375-3663	24		42375-3681
07		42375-3664	25		42375-3682
08		42375-3665	26		42375-3683
09		42375-3666	27		42375-3684
10		42375-3667	28		42375-3685
11		42375-3668	29		42375-3686
12		42375-3669	30		42375-3687
13		42375-3670	31		42375-3688
14		42375-3671	32		42375-3689
15		42375-3672	33		42375-3690
16		42375-3673	34		42375-3691
17		42375-3674	35		42375-3692
18		42375-3675	36		42375-3693
19		42375-3676			

ENG. NO: 42375-3694/3728					
HEADER NUMBER:		42312-0036			
PIN NUMBER:		42663-AXB208			
PIN LENGTH: L		.540 / 13.72			
MATING LENGTH: M		.250 / 6.35			
GOLD POINT: G		.140 / 3.56			
PC TAIL LENGTH: P		.200 / 5.08			
TIN: T		.135 / 3.43			
CKTS:		2-36			
KINKS:		NO			
VOIDED CKTS:		5			
PACKAGING:		BULK PK-40873-0041			
CKTS	MATERIAL NUMBER	ENG NUMBER	CKTS	MATERIAL NUMBER	ENG NUMBER
02		42375-3694	20		42375-3712
03		42375-3695	21		42375-3713
04		42375-3696	22		42375-3714
05		42375-3697	23		42375-3715
06		42375-3698	24		42375-3716
07		42375-3699	25		42375-3717
08	68300-2002	42375-3700	26		42375-3718
09		42375-3701	27		42375-3719
10		42375-3702	28		42375-3720
11		42375-3703	29		42375-3721
12		42375-3704	30		42375-3722
13		42375-3705	31		42375-3723
14		42375-3706	32		42375-3724
15		42375-3707	33		42375-3725
16		42375-3708	34		42375-3726
17		42375-3709	35		42375-3727
18		42375-3710	36		42375-3728
19		42375-3711			

REV: <b>T15</b>	<u>ECR/ECN INFORMATION:</u>		<u>TITLE:</u>		<u>SHEET No.</u> <b>- 27 -</b>
	EC No.:	UCP2009-1249	<b>KK 100 HEADER ASSY FLAT VERTICAL BREAKAWAY</b>		
	DATE:	12/2/2008			
<u>DOCUMENT NUMBER:</u> <b>SD- 42375-001</b>		<u>CREATED / REVISED BY:</u> <b>MKIPPER</b>	<u>CHECKED BY:</u> <b>JBELL</b>	<u>APPROVED BY:</u> <b>FSMITH</b>	

TEMPLATE FILENAME: PRODUCT\_SPEC(SIZE\_A)(V.1).DOC

ENG. NO: 42375-3729/3763						ENG. NO: 42375-3764/3798				
HEADER NUMBER:		42312-0036				HEADER NUMBER:		42312-0036		
PIN NUMBER:		42663-AFB208				PIN NUMBER:		42663-ETA154		
PIN LENGTH: L		.475 / 12.07				PIN LENGTH: L		.950/24.13		
MATING LENGTH: M		.232 / 5.89				MATING LENGTH: M		.750/19.05		
GOLD POINT: G		.150 / 3.81				GOLD POINT: G		N/A		
PC TAIL LENGTH: P		.153 / 3.89				PC TAIL LENGTH: P		.110/2.79		
TIN: T		.150 / 3.81				TIN: T		OVERALL		
CKTS:		2-36				CKTS:		2-36		
KINKS:		NO				KINKS:		NO		
VOIDED CKTS:		5				VOIDED CKTS:		2		
PACKAGING:		BULK PK-40873-0041				PACKAGING:		BULK PK-40873-0043		
CKTS	MATERIAL NUMBER	ENG NUMBER	CKTS	MATERIAL NUMBER	ENG NUMBER	CKTS	ITEM NUMBER	CKTS	ITEM NUMBER	
02		42375-3729	20		42375-3747	02		20		
03		42375-3730	21		42375-3748	03		21		
04		42375-3731	22		42375-3749	04		22		
05		42375-3732	23		42375-3750	05		23		
06		42375-3733	24		42375-3751	06		24		
07		42375-3734	25		42375-3752	07		25		
08	68300-2007	42375-3735	26		42375-3753	08	42375-3770	26		
09		42375-3736	27		42375-3754	09		27		
10		42375-3737	28		42375-3755	10		28		
11		42375-3738	29		42375-3756	11		29		
12		42375-3739	30		42375-3757	12		30		
13		42375-3740	31		42375-3758	13		31		
14		42375-3741	32		42375-3759	14		32		
15		42375-3742	33		42375-3760	15		33		
16		42375-3743	34		42375-3761	16		34		
17		42375-3744	35		42375-3762	17		35		
18		42375-3745	36		42375-3763	18		36		
19		42375-3746				19				
REV: <b>T15</b>		<u>ECR/ECN INFORMATION:</u> EC No.: <b>UCP2009-1249</b> DATE: <b>12/2/2008</b>			<u>TITLE:</u> <b>KK 100 HEADER ASSY FLAT VERTICAL BREAKAWAY</b>				<u>SHEET No.</u> <b>- 28 -</b>	
<u>DOCUMENT NUMBER:</u> <b>SD- 42375-001</b>				<u>CREATED / REVISED BY:</u> <b>MKIPPER</b>		<u>CHECKED BY:</u> <b>JBELL</b>		<u>APPROVED BY:</u> <b>FSMITH</b>		
<small>TEMPLATE FILENAME: PRODUCT_SPEC(SIZE_A)(V.1).DOC</small>										

ENG. NO: 42375-3799/3832			
HEADER NUMBER:		42312-0036	
PIN NUMBER:		42663-ABA154	
PIN LENGTH: L		.455 / 11.56	
MATING LENGTH: M		.240 / 6.09	
GOLD POINT: G		N/A	
PC TAIL LENGTH: P		.125 / 3.18	
TIN: T		OVERALL	
CKTS:		3-36	
KINKS:		NO	
VOIDED CKTS:		3	
PACKAGING:		BULK PK-40873-0041	
CKTS	MATERIAL NUMBER	CKTS	MATERIAL NUMBER
02		20	
03		21	
04		22	
05	42375-3801	23	
06		24	
07		25	
08		26	
09		27	
10		28	
11		29	
12		30	
13		31	
14		32	
15		33	
16		34	
17		35	
18		36	
19			

ENG. NO: 42375-3733/3867			
HEADER NUMBER:		42312-0036	
PIN NUMBER:		42663-ABB208	
PIN LENGTH: L		.455 / 11.56	
MATING LENGTH: M		.250 / 6.35	
GOLD POINT: G		.100 / 2.54	
PC TAIL LENGTH: P		.115 / 2.92	
TIN: T		.100 / 3.18	
CKTS:		2-36	
KINKS:		NO	
VOIDED CKTS:		NONE	
PACKAGING:		BULK PK-40873-0041	
CKTS	MATERIAL NUMBER	CKTS	MATERIAL NUMBER
02		20	
03		21	
04		22	
05	42375-3836	23	
06		24	
07		25	
08		26	
09		27	
10		28	
11		29	
12		30	
13		31	
14		32	
15		33	
16		34	
17		35	
18		36	
19			

ENG. NO: 42375-3868 / 3902			
HEADER NUMBER:		42312-0036	
PIN NUMBER:		42663-DWA154	
PIN LENGTH: L		.850 / 21.59	
MATING LENGTH: M		.640 / 16.26	
GOLD POINT: G		N/A	
PC TAIL LENGTH: P		.120 / 3.05	
TIN: T		OVERALL	
CKTS:		2-36	
KINKS:		NO	
VOIDED CKTS:		NONE	
PACKAGING:		BULK PK-40873-0041	
CKTS	ITEM NUMBER	CKTS	ITEM NUMBER
02		20	
03		21	
04	42375-3870	22	
05		23	
06	42375-3872	24	
07		25	
08		26	
09		27	
10		28	
11		29	
12		30	
13		31	
14		32	
15		33	
16		34	
17		35	
18		36	
19			

REV: <b>T15</b>	<u>ECR/ECN INFORMATION:</u>		<u>TITLE:</u> <b>KK 100 HEADER ASSY FLAT VERTICAL BREAKAWAY</b>	<u>SHEET No.</u> <b>- 29 -</b>
	EC No.: <b>UCP2009-1249</b>	DATE: <b>12/2/2008</b>		
<u>DOCUMENT NUMBER:</u> <b>SD- 42375-001</b>		<u>CREATED / REVISED BY:</u> <b>MKIPPER</b>	<u>CHECKED BY:</u> <b>JBELL</b>	<u>APPROVED BY:</u> <b>FSMITH</b>

ENG. NO: 42375-3903/3932				ENG. NO: 42375-3933/3964				ENG. NO: 42375-3965/3995			
HEADER NUMBER:		42312-0036		HEADER NUMBER:		42312-0036		HEADER NUMBER:		42312-0036	
PIN NUMBER:		42663-BSA154		PIN NUMBER:		42663-BSA154		PIN NUMBER:		42663-BSA154	
PIN LENGTH: L		.630 / 16.00		PIN LENGTH: L		.630 / 16.00		PIN LENGTH: L		.630 / 16.00	
MATING LENGTH: M		.421 / 10.69		MATING LENGTH: M		.405/10.29		MATING LENGTH: M		.405/10.29	
GOLD POINT: G		N/A		GOLD POINT: G		N/A		GOLD POINT: G		N/A	
PC TAIL LENGTH: P		.119 / 3.02		PC TAIL LENGTH: P		.135/3.43		PC TAIL LENGTH: P		.135/3.43	
TIN: T		OVERALL		TIN: T		OVERALL		TIN: T		OVERALL	
CKTS:		7-36		CKTS:		5-36		CKTS:		6-36	
KINKS:		NO		KINKS:		YES		KINKS:		YES	
VOIDED CKTS:		7		VOIDED CKTS:		5		VOIDED CKTS:		4, 5, 6	
PACKAGING:		BULK PK-40873-0041		PACKAGING:		BULK PK-40873-0041		PACKAGING:		BULK PK-40873-0041	
CKTS	MATERIAL NUMBER	CKTS	MATERIAL NUMBER	CKTS	MATERIAL NUMBER	CKTS	MATERIAL NUMBER	CKTS	MATERIAL NUMBER	CKTS	MATERIAL NUMBER
02		20		02		20		02		20	
03		21		03		21		03		21	
04		22		04		22		04		22	
05		23		05		23		05		23	
06		24		06		24		06		24	
07		25		07		25		07		25	
08	42375-3904	26		08		26		08		26	
09		27		09	42375-3937	27		09	42375-3968	27	
10		28		10		28		10		28	
11		29		11		29		11		29	
12		30		12		30		12		30	
13		31		13		31		13		31	
14		32		14		32		14		32	
15		33		15		33		15		33	
16		34		16		34		16		34	
17		35		17		35		17		35	
18		36		18		36		18		36	
19				19				19			

REV:	<u>ECR/ECN INFORMATION:</u>	<u>TITLE:</u>	<u>SHEET No.</u>
<b>T15</b>	EC No.: UCP2009-1249	<b>KK 100 HEADER ASSY FLAT VERTICAL BREAKAWAY</b>	<b>- 30 -</b>
	DATE: 12/2/2008		
<u>DOCUMENT NUMBER:</u>	<u>CREATED / REVISED BY:</u>	<u>CHECKED BY:</u>	<u>APPROVED BY:</u>
<b>SD- 42375-001</b>	<b>MKIPPER</b>	<b>JBELL</b>	<b>FSMITH</b>

TEMPLATE FILENAME: PRODUCT\_SPEC(SIZE\_A)(V.1).DOC

ENG. NO: A-42375-3996/4030				ENG. NO: 42375-4031/4059				ENG. NO: 42375-4060 / 4094			
HEADER NUMBER:		42312-0036		HEADER NUMBER:		42312-0036		HEADER NUMBER:		42312-0036	
PIN NUMBER:		42663-AXA154		PIN NUMBER:		42663-ABA154		PIN NUMBER:		42663-CGA154	
PIN LENGTH: L		.540 / 13.72		PIN LENGTH: L		.455 / 11.56		PIN LENGTH: L		.690 / 17.53	
MATING LENGTH: M		.390 / 9.91		MATING LENGTH: M		.240 / 6.09		MATING LENGTH: M		.521 / 13.23	
GOLD POINT: G		N/A		GOLD POINT: G		N/A		GOLD POINT: G		N/A	
PC TAIL LENGTH: P		.060 / 1.52		PC TAIL LENGTH: P		.125 / 3.18		PC TAIL LENGTH: P		.079 / 2.01	
TIN: T		OVERALL		TIN: T		OVERALL		TIN: T		OVERALL	
CKTS:		2-36		CKTS:		8-36		CKTS:		2-36	
KINKS:		NO		KINKS:		NO		KINKS:		NO	
VOIDED CKTS:		NONE		VOIDED CKTS:		2, 4, 6, 8		VOIDED CKTS:		NONE	
PACKAGING:		BULK PK-40873-0041		PACKAGING:		BULK PK-40873-0041		PACKAGING:		BULK PK-40873-0041	
CKTS	ITEM NUMBER	CKTS	ITEM NUMBER	CKTS	MATERIAL NUMBER	CKTS	MATERIAL NUMBER	CKTS	MATERIAL NUMBER	CKTS	MATERIAL NUMBER
02		20		02		20		02		20	
03		21		03		21		03		21	
04		22		04		22		04		22	
05		23		05		23		05		23	
06	42375-4000	24		06		24		06	42375-4064	24	
07	42375-4001	25		07		25		07		25	
08		26		08		26		08		26	
09		27		09	42375-4032	27		09		27	
10		28		10		28		10		28	
11		29		11		29		11		29	
12		30		12		30		12		30	
13		31		13		31		13		31	
14		32		14		32		14		32	
15		33		15		33		15		33	
16		34		16		34		16		34	
17		35		17		35		17		35	
18		36		18		36		18		36	
19				19				19			

<b>REV:</b> <b>T15</b>	<u>ECR/ECN INFORMATION:</u> EC No.: <b>UCP2009-1249</b> DATE: <b>12/2/2008</b>	<u>TITLE:</u> <b>KK 100 HEADER ASSY FLAT VERTICAL BREAKAWAY</b>	<u>SHEET No.</u> <b>- 31 -</b>
<u>DOCUMENT NUMBER:</u> <b>SD- 42375-001</b>	<u>CREATED / REVISED BY:</u> <b>MKIPPER</b>	<u>CHECKED BY:</u> <b>JBELL</b>	<u>APPROVED BY:</u> <b>FSMITH</b>

TEMPLATE FILENAME: PRODUCT\_SPEC(SIZE\_A)(V.1).DOC

ENG. NO: A-42375-4095/4129			
HEADER NUMBER:		42312-0036	
PIN NUMBER:		42663-DEB228	
PIN LENGTH: L		.785 / 19.94	
MATING LENGTH: M		.470 / 11.94	
GOLD POINT: G		.250 / 6.35	
PC TAIL LENGTH: P		.225 / 5.72	
TIN: T		.200 / 5.08	
CKTS:		2-36	
KINKS:		NO	
VOIDED CKTS:		NONE	
PACKAGING:		BULK PK-40873-0041	
CKTS	ITEM NUMBER	CKTS	ITEM NUMBER
02		20	
03		21	
04		22	
05		23	
06		24	
07		25	
08		26	
09		27	
10	42375-4103	28	
11		29	
12		30	
13		31	
14		32	
15		33	
16		34	
17		35	
18	42375-4111	36	
19			

ENG. NO: A-42375-4130/4161			
HEADER NUMBER:		42312-0036	
PIN NUMBER:		42663-ATA154	
PIN LENGTH: L		.530/13.46	
MATING LENGTH: M		.320/8.13	
GOLD POINT: G		N/A	
PC TAIL LENGTH: P		.120/3.05	
TIN: T		OVERALL	
CKTS:		5-36	
KINKS:		YES	
VOIDED CKTS:		2, 3, 4	
PACKAGING:		BULK PK-40873-0041	
CKTS	ITEM NUMBER	CKTS	ITEM NUMBER
		20	
		21	
		22	
05	42375-4130	23	
06		24	
07		25	
08		26	
09		27	
10		28	
11		29	
12		30	
13		31	
14		32	
15		33	
16		34	
17		35	
18		36	
19			

ENG. NO: 42375-4162/4196			
HEADER NUMBER:		42312-0036	
PIN NUMBER:		42663-BSC228	
PIN LENGTH: L		.630/16.00	
MATING LENGTH: M		.400/10.16	
GOLD POINT: G		.345/8.76	
PC TAIL LENGTH: P		.140/3.56	
TIN: T		.100/2.54	
CKTS:		2-36	
KINKS:		NO	
VOIDED CKTS:		NONE	
PACKAGING:		BULK PK-40873-0041	
CKTS	MATERIAL NUMBER	CKTS	MATERIAL NUMBER
02		20	
03		21	
04	42375-4164	22	
05	42375-4165	23	
06		24	
07		25	
08		26	
09		27	
10		28	
11		29	
12		30	
13		31	
14		32	
15		33	
16		34	
17		35	
18		36	
19			

REV: <b>T15</b>	<u>ECR/ECN INFORMATION:</u>		<u>TITLE:</u> <b>KK 100 HEADER ASSY FLAT VERTICAL BREAKAWAY</b>	<u>SHEET No.</u> <b>- 32 -</b>
	<u>EC No.:</u> UCP2009-1249	<u>DATE:</u> 12/2/2008		
<u>DOCUMENT NUMBER:</u> <b>SD- 42375-001</b>		<u>CREATED / REVISED BY:</u> <b>MKIPPER</b>	<u>CHECKED BY:</u> <b>JBELL</b>	<u>APPROVED BY:</u> <b>FSMITH</b>



ENG. NO: A-42375-1622			
HEADER NUMBER:		42312-0036	
PIN NUMBER:		42663-AYB208	
PIN LENGTH: L		.545 / 13.84	
MATING LENGTH: M		.320 / 8.13	
GOLD POINT: G		.140 / 3.56	
PC TAIL LENGTH: P		.135 / 3.43	
TIN: T		.135 / 3.43	
CKTS:		2-36	
KINKS:		SMES-42003	
VOIDED CKTS:		3	
PACKAGING:		BULK PK-40873-0041	
CKTS	MATERIAL NUMBER	CKTS	MATERIAL NUMBER
02		20	
03		21	
04		22	
05		23	
06		24	
07		25	
08		26	
09	42375-1622	27	
10		28	
11		29	
12		30	
13		31	
14		32	
15		33	
16		34	
17		35	
18		36	
19			

ENG. NO: A-42375-4199			
HEADER NUMBER:		42312-0036	
PIN NUMBER:		42663-ARB228	
PIN LENGTH: L		.520 / 13.21	
MATING LENGTH: M		.230 / 5.84	
GOLD POINT: G		.140 / 3.56	
PC TAIL LENGTH: P		.200 / 5.08	
TIN: T		.135 / 3.43	
CKTS:		2-36	
KINKS:		NO	
VOIDED CKTS:		NONE	
PACKAGING:		BULK PK-40873-0041	
CKTS	MATERIAL NUMBER	CKTS	MATERIAL NUMBER
02	42375-4199	20	
03		21	
04		22	
05		23	
06		24	
07		25	
08		26	
09		27	
10		28	
11		29	
12		30	
13		31	
14		32	
15		33	
16		34	
17		35	
18		36	
19			

ENG. NO: A-42375-4200			
HEADER NUMBER:		42312-0036	
PIN NUMBER:		42663-ADB208	
PIN LENGTH: L		.465 / 11.81	
MATING LENGTH: M		.240 / 6.09	
GOLD POINT: G		.100 / 2.54	
PC TAIL LENGTH: P		.135 / 3.43	
TIN: T		.100 / 2.54	
CKTS:		2-36	
KINKS:		SMES-42003	
VOIDED CKTS:		3, 4	
PACKAGING:		BULK PK-40873-0041	
CKTS	MATERIAL NUMBER	CKTS	MATERIAL NUMBER
02		20	
03		21	
04		22	
05	42375-4200	23	
06		24	
07		25	
08		26	
09		27	
10		28	
11		29	
12		30	
13		31	
14		32	
15		33	
16		34	
17		35	
18		36	
19			

REV: <b>T15</b>	<u>ECR/ECN INFORMATION:</u>		<u>TITLE:</u> <b>KK 100 HEADER ASSY FLAT VERTICAL BREAKAWAY</b>	<u>SHEET No.</u> <b>- 33 -</b>
	<u>EC No.:</u> UCP2009-1249	<u>DATE:</u> 12/2/2008		
<u>DOCUMENT NUMBER:</u> <b>SD- 42375-001</b>		<u>CREATED / REVISED BY:</u> <b>MKIPPER</b>	<u>CHECKED BY:</u> <b>JBELL</b>	<u>APPROVED BY:</u> <b>FSMITH</b>

ENG. NO: 42375-4236

HEADER NUMBER:	42312-0036		
PIN NUMBER:	42663-CCA118		
PIN LENGTH: L	.670 / 17.02		
MATING LENGTH: M	.440 / 11.18		
GOLD POINT: G	NA		
PC TAIL LENGTH: P	.140 / 3.56		
TIN: T	OVERALL		
CKTS:	2-36		
KINKS:	SMES-42003		
VOIDED CKTS:	NONE		
PACKAGING:	BULK PK-40873-0041		
CKTS	ITEM NUMBER	CKTS	ITEM NUMBER
02		20	
03		21	
04		22	
05		23	
06	42375-4236	24	
07		25	
08		26	
09		27	
10		28	
11		29	
12		30	
13		31	
14		32	
15		33	
16		34	
17		35	
18		36	
19			

REV: <b>T15</b>	<u>ECR/ECN INFORMATION:</u> EC No.: <b>UCP2009-1249</b> DATE: <b>12/2/2008</b>	<u>TITLE:</u> <b>KK 100 HEADER ASSY FLAT VERTICAL BREAKAWAY</b>	<u>SHEET No.</u> <b>- 34 -</b>
<u>DOCUMENT NUMBER:</u> <b>SD- 42375-001</b>	<u>CREATED / REVISED BY:</u> <b>MKIPPER</b>	<u>CHECKED BY:</u> <b>JBELL</b>	<u>APPROVED BY:</u> <b>FSMITH</b>
<small>TEMPLATE FILENAME: PRODUCT_SPEC(SIZE_A)(V.1).DOC</small>			