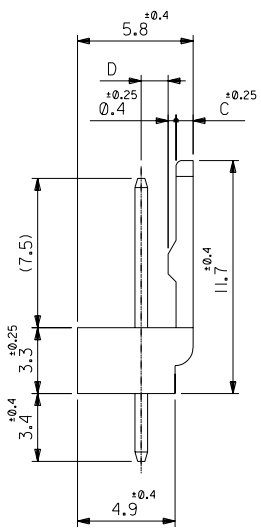
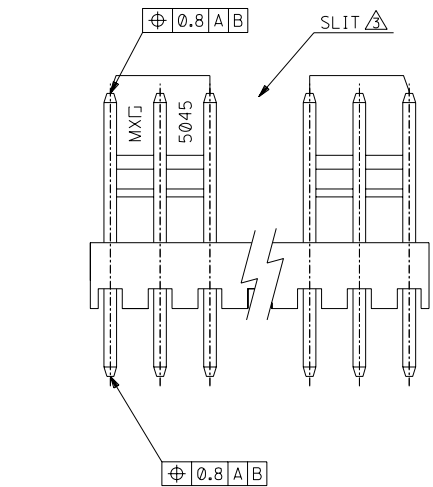


NOTES

- I. MATERIAL  
 WAFER : 66NYLON UL94V-0  
 PIN :  $\phi$ 0.635  
 BRASS, GOLD( $0.35\mu\text{M}$ MIN.)  
 OVER NICKEL( $2\mu\text{M}$ MIN.) PLATING
- $\triangle$  TO BE APPLIED FOR 6CKT.  
 AND MORE THAN 6CKT.
- $\triangle$  NO SLIT IS PROVIDED FOR 5CKT.  
 AND LESS THAN 5CKT.



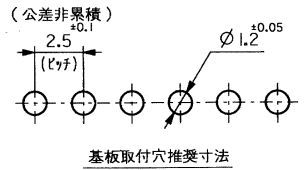
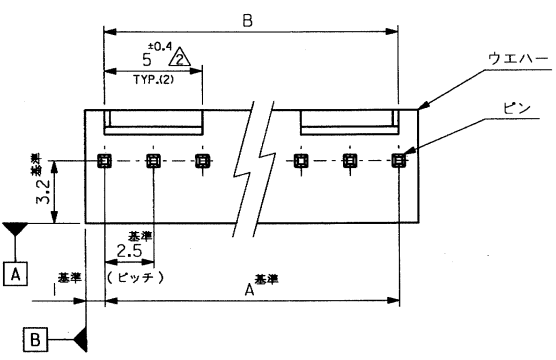
1.35	0.85	47.5 <sup>+0.3</sup> <sub>-0.45</sub>	47.5	22-11-1201	5045-20AG	20
45		45 <sup>+0.3</sup> <sub>-0.45</sub>	45	-1191	-19AG	19
42.5		42.5 <sup>+0.3</sup> <sub>-0.45</sub>	42.5	-1181	-18AG	18
40		40 <sup>+0.3</sup> <sub>-0.45</sub>	40	-1171	-17AG	17
37.5		37.5 <sup>+0.3</sup> <sub>-0.45</sub>	37.5	-1161	-16AG	16
35		35 <sup>+0.3</sup> <sub>-0.45</sub>	35	-1151	-15AG	15
32.5		32.5 <sup>+0.3</sup> <sub>-0.45</sub>	32.5	-1141	-14AG	14
30		30 <sup>+0.3</sup> <sub>-0.45</sub>	30	-1131	-13AG	13
27.5		27.5 <sup>+0.3</sup> <sub>-0.45</sub>	27.5	-1121	-12AG	12
25		25 <sup>+0.3</sup> <sub>-0.45</sub>	25	-1111	-11AG	11
22.5		22.5 <sup>+0.3</sup> <sub>-0.45</sub>	22.5	-1101	-10AG	10
20		20 <sup>+0.3</sup> <sub>-0.45</sub>	20	-1091	-09AG	9
17.5		17.5 <sup>+0.3</sup> <sub>-0.45</sub>	17.5	-1081	-08AG	8
15		15 <sup>+0.3</sup> <sub>-0.45</sub>	15	-1071	-07AG	7
12.5		12.5 <sup>+0.3</sup> <sub>-0.45</sub>	12.5	-1061	-06AG	6
10		10 <sup>+0.3</sup> <sub>-0.45</sub>	10	-1051	-05AG	5
1.35	0.85	7.5 <sup>+0.15</sup> <sub>-0.3</sub>	7.5	-1041	-04AG	4
1.2	1	5 <sup>+0.15</sup> <sub>-0.3</sub>	5	-1031	-03AG	3
1.2	1	2.5 <sup>+0.15</sup> <sub>-0.3</sub>	2.5	22-11-1021	5045-02AG	2
D	C	B	A	EDP NO.	ENG. NO.	CKT.

材料 MATERIAL		SEE NOTES		MOLEX MOLEX-JAPAN CO.,LTD. 日本モレックス株式会社	
仕上げ FINISH		---		EDP. NO. 22-11-1**1	
適用電線範囲 WIRE RANGE		---		ENG. NO. SD-5045-NAG	
被覆外径 INS. RANGE		---		REV E	
角度 ANGLE	±3°	記号 LTR	変更内容 REVISION RECORD	DR. DATE	日付
30以上 OVER	±0.3	E	REVISD & REDRAWN (100300)	Y.M.	190/4/4
10以上 30未満 UNDER	±0.25				
10未満 UNDER	±0.2				
一般公差 GENERAL TOLERANCES		REVISE ONLY ON CAD SYSTEM			
		DRAWN BY 90/3/23 Y.MITZUNO		CHK'D BY 90/2/10 M.FUKUSHIMA	
		APP'D BY 90/2/10 MENOMOTO		尺度 SCALE 5 - 1	
		TITLE 名称 KK 2.5 WAFER ASS'Y WITH LOCK			

THIS DRAWING CONTAINS INFORMATION THAT IS PROPRIETARY TO MOLEX/JAPAN AND SHOULD NOT BE USED WITHOUT WRITTEN PERMISSION  
 本図面は日本モレックス(株)の所有する情報を含むもので 当社の許可なく複製を禁止する。 MXJ-8

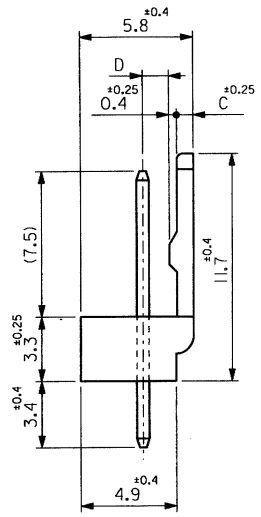
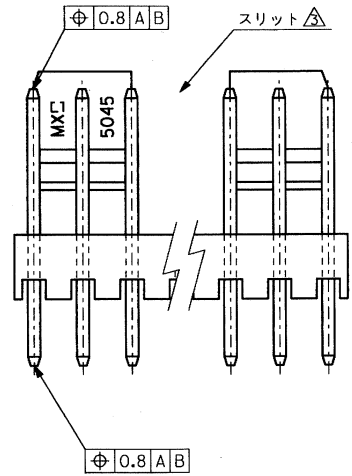
EDP NO. 22-11-1001  
 ENG. NO. SD-5045-NAG

ALL DIMENSIONS IN METRIC DO NOT SCALE DRAWING



注記

1. 材料  
 ウエハー: 66ナイロン, UL94V-0  
 ピン: φ0.635 黄銅  
 ニッケル下地: 2 μm MIN.  
 金メッキ: 0.35 μm MIN.
- △ 6極以上に適用  
 △ 5極以下はロック部スリットなし



1.35	0.85	47.5 <sup>+0.3</sup> <sub>-0.45</sub>	47.5	22-11-1201	5045-20AG	20
		45 <sup>+0.3</sup> <sub>-0.45</sub>	45	↑ -1191	↑ -19AG	19
		42.5 <sup>+0.3</sup> <sub>-0.45</sub>	42.5	↑ -1181	↑ -18AG	18
		40 <sup>+0.3</sup> <sub>-0.45</sub>	40	↑ -1171	↑ -17AG	17
		37.5 <sup>+0.3</sup> <sub>-0.45</sub>	37.5	↑ -1161	↑ -16AG	16
		35 <sup>+0.3</sup> <sub>-0.45</sub>	35	↑ -1151	↑ -15AG	15
		32.5 <sup>+0.3</sup> <sub>-0.45</sub>	32.5	↑ -1141	↑ -14AG	14
		30 <sup>+0.25</sup> <sub>-0.3</sub>	30	↑ -1131	↑ -13AG	13
		27.5 <sup>+0.25</sup> <sub>-0.4</sub>	27.5	↑ -1121	↑ -12AG	12
		25 <sup>+0.2</sup> <sub>-0.3</sub>	25	↑ -1111	↑ -11AG	11
		22.5 <sup>+0.2</sup> <sub>-0.4</sub>	22.5	↑ -1101	↑ -10AG	10
		20 <sup>+0.15</sup> <sub>-0.35</sub>	20	↑ -1091	↑ -09AG	9
		17.5 <sup>+0.15</sup> <sub>-0.35</sub>	17.5	↑ -1081	↑ -08AG	8
		15 <sup>+0.1</sup> <sub>-0.3</sub>	15	↑ -1071	↑ -07AG	7
		12.5 <sup>+0.1</sup> <sub>-0.3</sub>	12.5	↑ -1061	↑ -06AG	6
		10 <sup>+0.15</sup> <sub>-0.35</sub>	10	↑ -1051	↑ -05AG	5
		7.5 <sup>+0.15</sup> <sub>-0.35</sub>	7.5	↑ -1041	↑ -04AG	4
1.35	0.85	5 <sup>+0.15</sup> <sub>-0.35</sub>	5	↓ -1031	↓ -03AG	3
1.2	1	2.5 <sup>+0.15</sup> <sub>-0.35</sub>	2.5	22-11-1021	5045-02AG	2
D	C	B	A	EDP. NO.	ENG. NO.	極数

角度 ANGLE	±3°								
30 以上 OVER	±0.3								
10 以上 30 未満	±0.25	E	変更及び再作成(J00330)	Y.M	90/4/4	90/3/23	CHK'D BY		
10 未満	±0.2	取替	変更内容	DR	DATE	DATE	CHK'D BY		
一般公差		REVISION RECORD		APP'D BY			尺度	5 - 1	
GENERAL TOLERANCES		REVISE ONLY ON CAD SYSTEM							

材料 MATERIAL 注記参照

仕上げ FINISH -- --

適用電線範囲 WIRE RANGE -- --

被覆外径 INS. RANGE -- --

DRAWN BY '90/3/23

CHK'D BY

Y. MIZUNO

APP'D BY

尺度 SCALE 5 - 1

MOLEX-JAPAN CO., LTD.  
 日本モレックス株式会社

EDP. NO. 22-11-1001

ENG. NO. SD-5045-NAG

REV E

TITLE 名称  
 KK 2.5 WAFER ASS'Y WITH LOCK

THIS DRAWING CONTAINS INFORMATION THAT IS PROPRIETARY TO MOLEX/JAPAN AND SHOULD NOT BE USED WITHOUT WRITTEN PERMISSION  
 本図面は日本モレックス(株)の所有する情報を含むもので当社の許可なく複製を禁止する。

MXJ-8