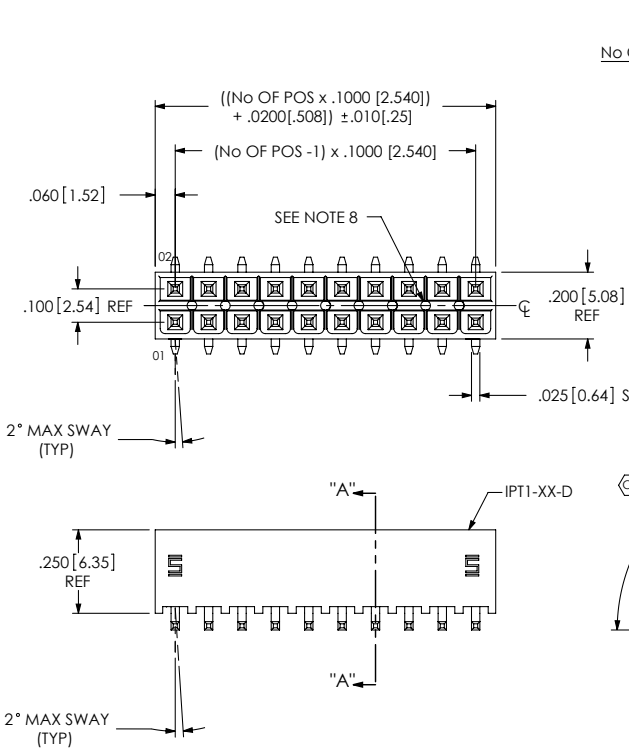


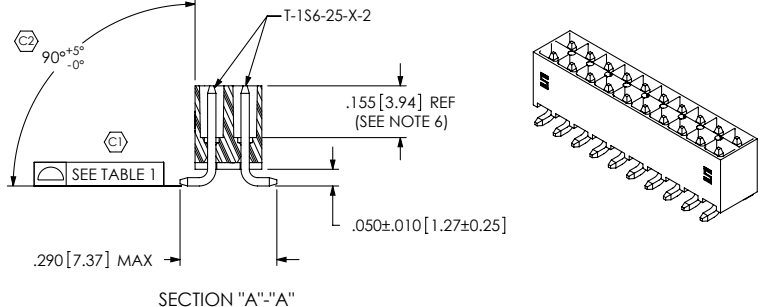
REVISION T

DO NOT SCALE FROM THIS PRINT



IPT1-1XX-XX-XX-D-VS-XX-XXX

- No OF POS PER ROW: -02 THRU -25
- LEAD STYLE: -01
- PLATING SPECIFICATION:  
 -S: HEAVY SELECTIVE GOLD (USE T-1S6-25-S-2)  
 -SM: HEAVY SELECTIVE GOLD, MATTE TIN ON TAIL (USE T-1S6-25-S-2)  
 -L: LIGHT SELECTIVE GOLD, MATTE TIN ON TAIL (USE T-1S6-25-L-2)
- OPTION:  
 -POL: POSITION #1 REMOVED (USE IPT1-XX-D-P)  
 -K: POLYIMIDE FILM PAD [AVAILABLE ON POSITIONS -03 THRU -25 ONLY]  
 -TR: TAPE AND REEL
- OPTION:  
 -A: ALIGNMENT PIN (USE SM-A11) [4 POS MIN]  
 -LC: LOCKING CLIP (USE LC-07-TM) [4 POS MIN] (SEE NOTE 10)  
 -FL: FRICTION LOCK [POS -05 THRU -25] (USE IPT1-XX-D-FL-X & T-1S64-05-X)
- TAIL OPTION:  
 -VS: VERTICAL SURFACE MOUNT
- ROW SPECIFICATION:  
 -D: DOUBLE (USE IPT1-XX-D)

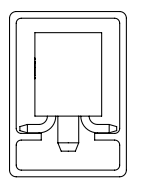


- NOTES:
- Ⓢ REPRESENTS A CRITICAL DIMENSION.
  - MAXIMUM ALLOWABLE CUT FLASH: .010 [25].
  - MINIMUM TERMINAL PUSH OUT FORCE: 2 lbs.
  - MAXIMUM VARIATION BETWEEN PIN ROWS: .005 [13].
  - "END WALLS" AFTER CUTTING SHOULD BE .010 +/- .003 [25 +/- .08].
  - PINS TO BE FLUSH TO .008 [20] MAXIMUM RECESSED IN BODY.
  - ALL DIMENSIONS TO BE ABOUT CENTERLINE WITHIN +/- .005 [13].
  - PRESENCE OF VOIDS IS OPTIONAL AND PATTERN TO WHICH THEY OCCUR IS VARIABLE.
  - AFTER REVISION T OF COMPONENT PRINT IPT1-XX-D-XX-X, SAMTEC LOGO TO APPEAR ON CORE #1 FOR POSITIONS 1 THROUGH 5 AND CORE #1 AND #49 FOR POSITIONS 6 THROUGH 50.
  - DUE TO THE HIGH AMOUNT OF INSERTION FORCE NEEDED, THE -LC OPTION IS NOT COMPATIBLE WITH AUTO PLACEMENT. SAMTEC RECOMMENDS MANUAL PLACEMENT FOR ALL ASSEMBLIES WITH THE -LC OPTION.

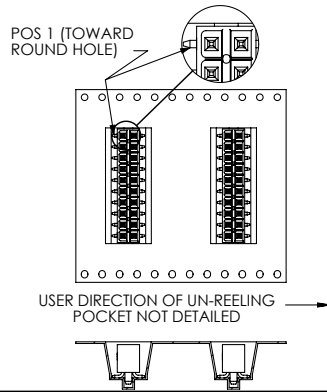
POSITION	COPLANARITY
-02 THRU -10	.005 [ 13]
-11 THRU -25	.006 [ 15]

PACKAGING VIEW

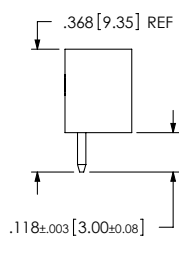
[-02 POSITION TO BE BULK PACKAGED]



-TR: TAPE & REEL PACKAGING OPTION



IN-PROCESS



UNLESS OTHERWISE SPECIFIED, DIMENSIONS ARE IN INCHES. TOLERANCES ARE:  
 DECIMALS: .XX: ±.01 [3]  
 .XXX: ±.005 [13]  
 .XXXX: ±.0020 [051]  
 ANGLES: ± 2°

PROPRIETARY NOTE  
 THIS DOCUMENT CONTAINS INFORMATION CONFIDENTIAL AND PROPRIETARY TO SAMTEC, INC. AND SHALL NOT BE REPRODUCED OR TRANSFERRED TO OTHER DOCUMENTS OR DISCLOSED TO OTHERS OR USED FOR ANY PURPOSE OTHER THAN THAT WHICH IT WAS OBTAINED WITHOUT THE EXPRESSED WRITTEN CONSENT OF SAMTEC, INC.

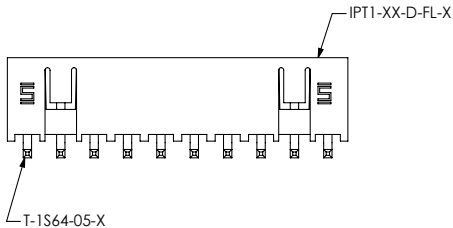


MATERIAL: DO NOT SCALE DRAWING INSULATOR: VECTRA E130, COLOR: BLACK CONTACT: PHOS BRONZE, 510, 3/4 HARD	DESCRIPTION: .100 DOUBLE ROW SHROUDED TERMINAL ASSEMBLY
DWG. NO. IPT1-1XX-XX-XX-D-VS-XX-XXX	
BY: DEAN P	11-06-2002 SHEET 1 OF 2

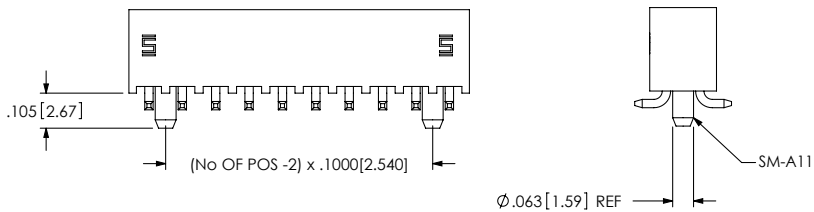
F:\DWG\MISC\MKTG\IPT1-1XX-XX-XX-D-VS-XX-XXX-MKT.SLDDRW

REVISION T

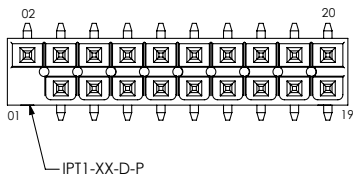
-FL: FRICTION LOCK OPTION  
IPT1-110-01-X-D-VS-FL SHOWN



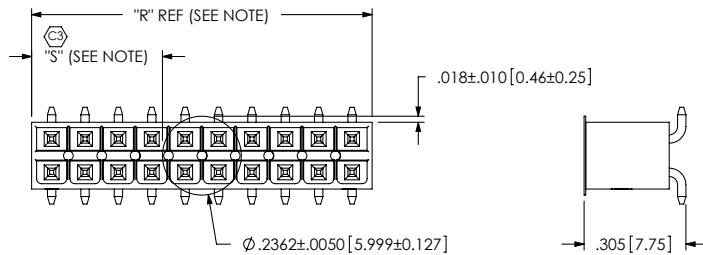
-A: ALIGNMENT PIN OPTION  
IPT1-110-01-X-D-VS-A SHOWN



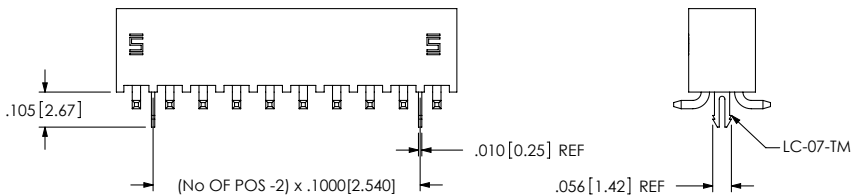
-POL: POLARIZED OPTION  
IPT1-110-01-X-D-VS-POL SHOWN



-K: POLYIMIDE FILM PAD OPTION  
[AVAILABLE ON POSITIONS -03 THRU -25 ONLY]



-LC: LOCKING CLIP OPTION  
IPT1-110-01-X-D-VS-LC-FL SHOWN



NOTE: "R" = USE MEASURED DIMENSION  
"S" = (( "R" - .2362 [6.000] ) / 2) ± .020 [51]

PROPRIETARY NOTE

THIS DOCUMENT CONTAINS INFORMATION CONFIDENTIAL AND PROPRIETARY TO SAMTEC, INC. AND SHALL NOT BE REPRODUCED OR TRANSFERRED TO OTHER DOCUMENTS OR DISCLOSED TO OTHERS OR USED FOR ANY PURPOSE OTHER THAN THAT WHICH IT WAS OBTAINED WITHOUT THE EXPRESSED WRITTEN CONSENT OF SAMTEC, INC.

DO NOT SCALE DRAWING

SHEET SCALE: 2.25:1

**samtec**

520 PARK EAST BLVD, NEW ALBANY, IN 47150  
PHONE: 812-944-6733 FAX: 812-948-5047  
e-Mail info@SAMTEC.com code: 55322

DESCRIPTION:  
.100 DOUBLE ROW SHROUDED TERMINAL ASSEMBLY

DWG. NO.  
IPT1-1XX-XX-XX-D-VS-XX-XXX

BY: DEAN P 11-06-2002 SHEET 2 OF 2

F:\DWG\MISC\MKTG\IPT1-1XX-XX-XX-D-VS-XX-XXX-MKT.SLDDRW