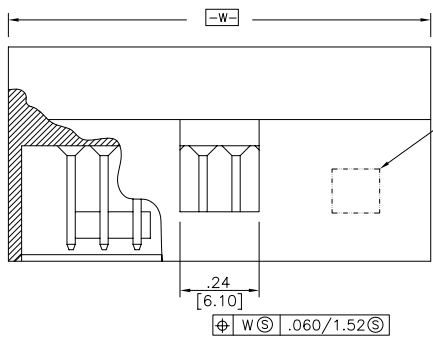
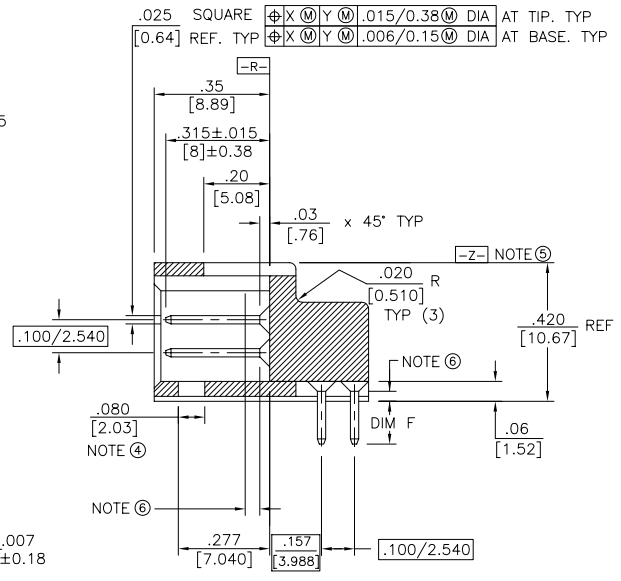


PRODUCT NUMBER
SEE TABLE

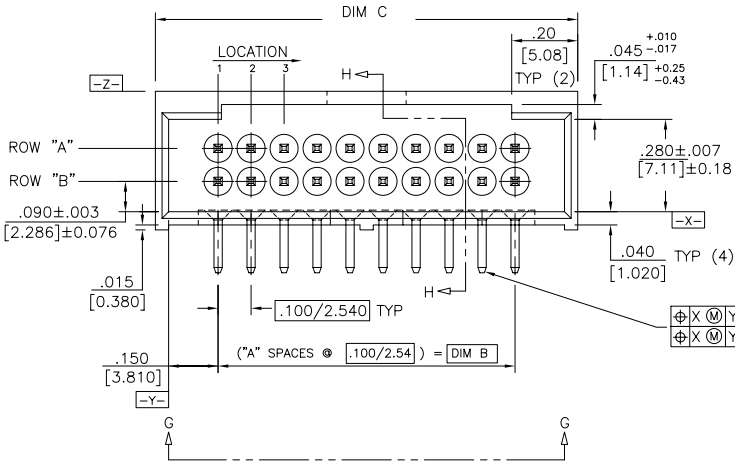


NOTE 5

$\phi X \text{ (M)}$ $Y \text{ (M)}$ $\phi .015/0.38 \text{ (M)}$ DIA AT TIP. TYP
 $\phi X \text{ (M)}$ $Y \text{ (M)}$ $\phi .006/0.15 \text{ (M)}$ DIA AT BASE. TYP



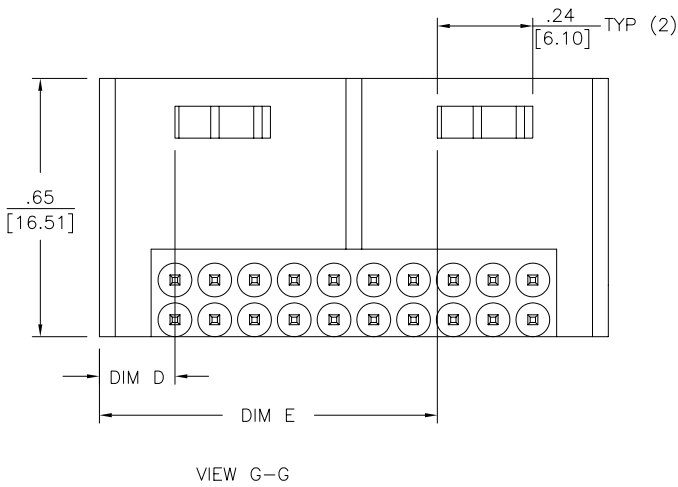
SECTION H-H



$\phi X \text{ (M)}$ $Y \text{ (M)}$ $\phi .015/0.38 \text{ (M)}$ DIA AT TIP. TYP
 $\phi X \text{ (M)}$ $Y \text{ (M)}$ $\phi .006/0.15 \text{ (M)}$ DIA AT BASE. TYP

| | | | | | | | | | |
|-------------------------|--|----------|--|---------------------|--|------------|--|--------------------------|--|
| mat'l. code | | surface | | tolerance | | projection | | product family | |
| | | ISO 1302 | | ISO 406 | | INCH/MM | | HEADERS | |
| A APPROVED JRL 4/3/85 | | angles | | linear | | scale 8:1 | | title | |
| B ADD INF EBY 10/16/85 | | 0°±2° | | XXX4.005/XXX4.013 | | | | RIGHT ANGLE HEADER FOR | |
| C M05-0204 MHT 11/09/05 | | dr | | COPENHEAVED 7/10/84 | | | | FLAT CABLE RECEPTACLE | |
| D N07-0150 MHT 8/01/07 | | enrg | | P.M. SMITH 4/10/85 | | | | dwg no | |
| | | chr | | | | | | sheet 1 of 4 size | |
| | | appd | | CA WILLIAMS 4/12/85 | | | | 68645 A3 | |
| | | sheet | | D | | | | type | |
| index | | revision | | D | | | | Product Customer Drawing | |
| | | sheet | | 1 2 3 4 | | | | | |

PRODUCT NUMBER
SEE TABLE



NOTES:

1. TERMINAL MAT'L: 3/4 HARD PHOS. BRONZE ALLOY UNS-C51000.
2. PLATING; 0.76 μ /30 μ "A μ OR GTX OVER 1.27 μ /50 μ "N1.
3. MOLDING MAT'L: GLASS FILLED POLYESTER. FLAME RETARDANT PER UL94V-0. COLOR BLACK
4. .02/.051 MAX FLASH AROUND ALL WINDOWS.
5. FCI LOGO MOLDED IN ON DATUM SURFACE -Z- APPROXIMATELY AS SHOWN.
6. .03/.76 MAX FLASH PERMISSIBLE ON PINS BOTH ENDS.
7. PLATING OPTIONS:
MAY BE EITHER GOLD OR GTX PLATED AT MANUFACTURER'S OPTION.
8. OTHER PLATINGS ARE AVAILABLE ON 68420, 68646 AND 68647.
9. ADD "LF" AT THE END OF PART NUMBER FOR LEAD FREE OPTION.
10. THIS PRODUCT MEETS EUROPEAN UNION DIRECTIVES AND OTHER COUNTRY REGULATION AS DESCRIBED IN GS-22-008
11. THE HOUSING WILL WITHSTAND EXPOSURE TO 260°C PEAK TEMPERATURE FOR 15 SECONDS IN A WAVE SOLDER APPLICATION WITH A 1.5mm MINIMUM THICK CIRCUIT BOARD. SEE APPLICATION NOTES/PROCEDURES IF THEY ARE AVAILABLE.

| | | | | | |
|---------------------------------------|-----|---|-----------|------------|--------------------------|
| mat'l. code | | surface | tolerance | projection | product family |
| ISO 1302 | | ISO 406 | ISO 1101 | | HEADERS |
| tolerances unless otherwise specified | | .XX4.01/.X40.3 .XXX4.005/.XXX40.13 .0 \pm 2" .XXX4.0020/.XXX40.051 | | | INCH/MM scale 8:1 |
| ltr | ecn | no | dr | date | dwg no |
| D | | | | 7/10/84 | sheet 2 of 4 |
| dr | | COPENHEAVED | | 4/10/85 | size |
| enrg | | P.M. SMITH | | 4/10/85 | A3 |
| chr | | - | | - | |
| appd | | CA WILLIAMS | | 4/12/85 | type |
| sheet index | | revision sheet | | | Product Customer Drawing |

PDM: Rev:D STATUS:Released Printed: Dec 01, 2010

| PRODUCT No. NOTE 9,10 | No. OF POS. | "A" SPACES | DIM B | DIM C | DIM D | DIM E | DIM F |
|--------------------------|----------------|---------------|--------------|--------------|-------------|--------------|------------|
| 68645-001 | 6 | 2 | .200/5.080 | .500/12.700 | .150/3.810 | ----- | .130/3.300 |
| -002 | 8 | 3 | .300/7.620 | .600/15.240 | .150/3.810 | ----- | .130/3.300 |
| -003 | 10 | 4 | .400/10.160 | .700/17.780 | .250/6.350 | ----- | .130/3.300 |
| -004 | 12 | 5 | .500/12.700 | .800/20.320 | .250/6.350 | ----- | .130/3.300 |
| -005 | 14 | 6 | .600/15.240 | .900/22.860 | .350/8.890 | ----- | .130/3.300 |
| -006 | 16 | 7 | .700/17.780 | 1.000/25.400 | .350/8.890 | ----- | .130/3.300 |
| -007 | 18 | 8 | .800/20.320 | 1.100/27.940 | .450/11.430 | ----- | .130/3.300 |
| -008 | 20 | 9 | .900/22.860 | 1.200/30.480 | .150/3.810 | .850/21.590 | .130/3.300 |
| -009 | 22 | 10 | 1.000/25.400 | 1.300/33.020 | .150/3.810 | .950/24.130 | .130/3.300 |
| -010 | 24 | 11 | 1.100/27.940 | 1.400/35.560 | .150/3.810 | 1.050/26.670 | .130/3.300 |
| -011 | 26 | 12 | 1.200/30.480 | 1.500/38.100 | .150/3.810 | 1.150/29.210 | .130/3.300 |
| -012 | 28 | 13 | 1.300/33.020 | 1.600/40.640 | .150/3.810 | 1.250/31.750 | .130/3.300 |
| -013 | 30 | 14 | 1.400/35.560 | 1.700/43.180 | .150/3.810 | 1.350/34.290 | .130/3.300 |
| -014 | 32 | 15 | 1.500/38.100 | 1.800/45.720 | .150/3.810 | 1.450/36.830 | .130/3.300 |
| -015 | 34 | 16 | 1.600/40.640 | 1.900/48.260 | .150/3.810 | 1.550/39.370 | .130/3.300 |
| -016 | 36 | 17 | 1.700/43.180 | 2.000/50.800 | .150/3.810 | 1.650/41.910 | .130/3.300 |
| -017 | 38 | 18 | 1.800/45.720 | 2.100/53.340 | .150/3.810 | 1.750/44.450 | .130/3.300 |
| -018 | 40 | 19 | 1.900/48.260 | 2.200/55.880 | .150/3.810 | 1.850/46.990 | .130/3.300 |
| -019 | 42 | 20 | 2.000/50.800 | 2.300/58.420 | .150/3.810 | 1.950/49.530 | .130/3.300 |
| -020 | 44 | 21 | 2.100/53.340 | 2.400/60.960 | .150/3.810 | 2.050/52.070 | .130/3.300 |
| -021 | 46 | 22 | 2.200/55.880 | 2.500/63.500 | .150/3.810 | 2.150/54.610 | .130/3.300 |
| -022 | 48 | 23 | 2.300/58.420 | 2.600/66.040 | .150/3.810 | 2.250/57.150 | .130/3.300 |
| -023 | 50 | 24 | 2.400/60.960 | 2.700/68.580 | .150/3.810 | 2.350/59.690 | .130/3.300 |
| -024 | 52 | 25 | 2.500/63.500 | 2.800/71.120 | .150/3.810 | 2.450/62.230 | .130/3.300 |
| -025 | 54 | 26 | 2.600/66.040 | 2.900/73.660 | .150/3.810 | 2.550/64.770 | .130/3.300 |
| -026 | 56 | 27 | 2.700/68.580 | 3.000/76.200 | .150/3.810 | 2.650/67.310 | .130/3.300 |
| -027 | 58 | 28 | 2.800/71.120 | 3.100/78.740 | .150/3.810 | 2.750/69.850 | .130/3.300 |
| -028 | 60 | 29 | 2.900/73.660 | 3.200/81.280 | .150/3.810 | 2.850/72.390 | .130/3.300 |
| -029 | 62 | 30 | 3.000/76.200 | 3.300/83.820 | .150/3.810 | 2.950/74.930 | .130/3.300 |
| 68645-030 | 64 | 31 | 3.100/78.740 | 3.400/86.360 | .150/3.810 | 3.050/77.470 | .130/3.300 |

| | | | | |
|--------------------|---------------------------------------|--|------------|---|
| mat'l. code | surface ISO 1302 | tolerance ISO 406 ISO 1101 | projection | product family HEADERS |
| ltr ecn no dr date | tolerances unless otherwise specified | | | title |
| D | angles | linear | INCH/MM | RIGHT ANGLE HEADER FOR FLAT CABLE RECEPTACLE |
| | 0°±2' | XXXX.005/XXXX.013 XXXX.0020/XXXX.0051 | scale 8:1 | dwg no sheet 3 of 4 size |
| | dr COPENHEAVED 7/10/84 | enrg P.M. SMITH 4/10/85 | | 68645 A3 |
| | chr - | appd CA WILLIAMS 4/12/85 | | type Product Customer Drawing |
| sheet index | revision sheet | | | |

PDM: Rev:D STATUS:Released Printed: Dec 01, 2010

| PRODUCT No. NOTE 9,10 | No. OF POS. | "A" SPACES | DIM B | DIM C | DIM D | DIM E | DIM F |
|--------------------------|-----------------|---------------|--------------|--------------|------------|--------------|------------|
| 68645-031 | 66 | 32 | 3.200/81.280 | 3.500/88.900 | .150/3.810 | 3.150/80.010 | .130/3.300 |
| -032 | 68 | 33 | 3.300/83.820 | 3.600/91.440 | .150/3.810 | 3.250/82.550 | .130/3.300 |
| -033 | 70 | 34 | 3.400/86.360 | 3.700/93.980 | .150/3.810 | 3.350/85.090 | .130/3.300 |
| -034 | 72 | 35 | 3.500/88.900 | 3.800/96.520 | .150/3.810 | 3.450/87.630 | .130/3.300 |
| -035 | 16 | 7 | .700/17.780 | 1.000/25.400 | .350/8.890 | — | .155/3.940 |
| -036 | 40 | 19 | 1.900/48.260 | 2.200/55.880 | .150/3.810 | 1.850/46.990 | .155/3.940 |
| -037 | 50 | 24 | 2.400/60.960 | 2.700/68.580 | .150/3.810 | 2.350/59.690 | .155/3.940 |
| 68645-038 | I N A C T I V E | | | | | | |

| | | | | |
|-------------|---------------------|----------------------------------|------------|---|
| mat'l. code | surface ISO 1302 | tolerance ISO 406 ISO 1101 | projection | product family |
| ltr | ecn | no | dr | date |
| D | | | | |
| | angles | linear | INCH/MM | title |
| | 0°±2' | XXXX.005/XXXX.01 | scale 8:1 | RIGHT ANGLE HEADER FOR FLAT CABLE RECEPTACLE |
| | dr | COPENHEAVED | 7/10/84 | dwg no |
| | enrg | P.M. SMITH | 4/10/85 | 68645 |
| | chr | - | - | sheet 4 of 4 size |
| | appd | CA WILLIAMS | 4/12/85 | A3 |
| sheet | revision | | | type |
| index | sheet | | | Product Customer Drawing |

PDM: Rev:D STATUS:Released Printed: Dec 01, 2010