

Tous droits strictement réservés. Reproduction ou communication à des tiers interdite sous quelque forme que ce soit sans autorisation écrite du propriétaire. Propriété de c FCI. Droits de reproduction FCI.

All rights strictly reserved. Reproduction or issue to third parties in any form whatever is not permitted without written authority from the proprietor. Property of FCI. Copyright FCI.



1 | 2
3 | 4

PRODUCT NO.			
SEE TABLE			

mat'l. code	SEE NOTE 3			tolerances unless otherwise specified	CUSTOMER COPY		www.fciconnect.com
ltr	ecn no	dr	date	linear	.XX ±.01/.XX±.3	projection	title
W	T10173	MRC	09/03/91		.XXX ±.005/.XXX±.13		SLIM LINE,RIGHT ANGLE
X	V04-0921	PJ	09/21/04		.XXX ±.0020/.XXX±.051		
Y	N05-0123	ZC	5/9/05	angles	0° ±2°	INCH/MM	product family
AA	N07-0151	WG	7/26/07	dr	P.JAYADEEP 09/21/04	scale	QKE.HDR.
				enrg	H.SUNDY 09/21/04	5:1	code
				chr	H.SUNDY 09/21/04		213
				appd	H.SUNDY 09/21/04		size
sheet	revision	AA	AA	AA	AA	AA	65496
index	sheet	1	2	3	4	5	1 of 7

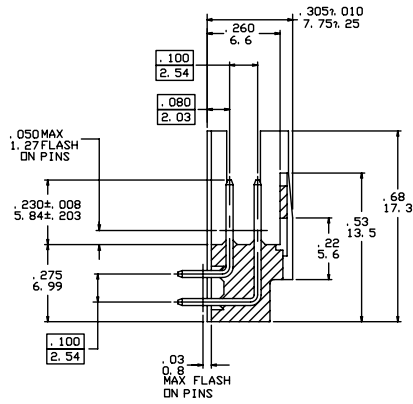
1 | 2
3 | 4

ACAD

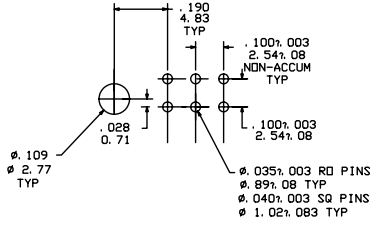
PDM: Rev:AA

STATUS Released 22 26: Apr 12, 2011

PRODUCT NO.  
SEE TABLE



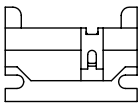
SECTION K-K  
SCALE 8/1



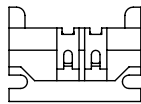
RECOMMENDED HOLE PATTERN  
SCALE 10/1

NOTES:

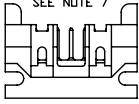
- ① POLARIZING SLOT NON-EXISTENT ON STYLE A 2 X 5 ONLY.
- ② STD. 2 X 5 HEADERS WILL HAVE NO DESIGNATION IN CHART. STYLE A 2 X 5 HEADERS WILL BE DESIGNATED STYLE A IN CHARTS.
- ③ MOLDING MAT'L: GLASS FILLED POLYESTER, FLAME RETARDANT PER UL94, V-0. COLOR - BLUE.
4. 1° MAX DRAFT PERMISSIBLE ON ALL SURFACES UNLESS OTHERWISE INDICATED.
5. .37/.9.4 MAX DIM FROM MOUNTING SLOT TO EDGE OF BOARD FOR DIASY CHAIN.
- ⑥ .015/.38 STANDOFF LOCATED APPROX AS SHOWN.
- ⑦ ARROW IDENTIFICATION DENOTING PIN#1 POSITION.
8. PIN MAT'L: PHOS. BRONZE UNS-C51000.
- ⑨ OPTIONAL PLATING ON LEAD -IN OF PINS.
- ⑩ RECOMMENDED MOUNTING SCREW SIZE #2-56 X 3/8 LG FILLISTER HEAD MACHINE SCREW FOR 1/16, 3/32, & 1/8 BOARDS.
- ⑪ TAIL TIPS TO BE TIN LEAD DIPPED, DIP LENGTH TO BE DIM 'D' MINUS .02/.05 MAX. 100u"/2.54um MIN.
- ⑫ CORING OPTIONAL FOR MANUFACTURING AROUND TERMINAL TAILS.
13. 65496-\*\*\*MLF IS JUST A LEAD FREE PRODUCT.
14. THE HOUSING OF XXXX-XYLF WILL WITHSTAND EXPOSURE TO 260°C PEAK TEMPERATURE FOR 10 SECONDS IN A WAVE SOLDER PROCESS.
15. PLATING OPTION : MAYBE EITHER GOLD OR GXT PLATING AT MANUFACTURER SITE



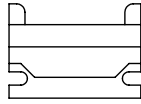
STYLE A  
2 X 5  
SEE NOTE 7



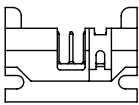
STYLE C



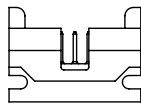
2 X 8 OR MORE PINS  
STYLE B



STYLE D



STANDARD 2 X 7  
STYLE B



STANDARD 2 X 5  
STYLE B

mat'l. code		tolerances unless otherwise specified		CUSTOMER COPY		FCJ	
ltr	ecn no	dr	date	linear	projection	www.fcjconnect.com	
AA				.xx ±.01/.xx.3	⊕	title	
				.xxx ±.005/.xxx±.13	↔	HEADER, QUICKIE	
				.xxx ±.002/.xxx±.051	↔	SLIM LINE, RIGHT ANGLE	
				angles	INCH/MM	product family	code
				dr P.JAYADEEP 09/21/04	5:1	QKE.HDR.	213
				enrg H.SUNDY 09/21/04		size	sheet
				chr H.SUNDY 09/21/04		dwg no	2 of 7
				appd H.SUNDY 09/21/04		65496	
sheet	revision					cage code	
index	sheet						

Tous droits strictement reserves. Reproduction ou communication a des tiers interdite sous quelque forme que ce soit sans autorisation écrite du propriétaire. Property of FCJ. Droits de reproduction FCJ.



All rights strictly reserved. Reproduction or issue to third parties in any form whatever is not permitted without written authority from the proprietor. Property of FCJ. Copyright FCJ.

Tous droits strictement réservés. Reproduction ou communication à des tiers interdite sous quelque forme que ce soit sans autorisation écrite du propriétaire. Property of FCI. Droits de reproduction FCI.



All rights strictly reserved. Reproduction or issue to third parties in any form whatever is not permitted without written authority from the proprietor. Property of FCI. Copyright FCI.

PRODUCT NO.	SIZE	STYLE	DIM A	DIM B	DIM C	DIM D	DIM E	TERM CONFIG	TERMINAL PLATING NOTE 15
65496-001	2 X 5	B	.95/24.13	.400/10.16	.72/18.29	.105/2.67	.78/19.81	ROUND	30u"/.76um Au- 50u"/1.27um Ni
-002						.150/3.81		SQ	150u"/3.81um TIN
-003						.675/17.15		SQ	30u"/.76um Au- 50u"/1.27um Ni
-004						.105/2.67		SQ	150u"/3.81um TIN
-005						.150/3.81		ROUND	30u"/.76um Au- 50u"/1.27um Ni
-006	2 X 5		.95/24.13	.400/10.16	.72/18.29	.675/17.15	.78/19.81	SQ	150u"/3.81um TIN
-007	2 X 10		1.45/36.83	.900/22.86	1.22/30.99	.105/2.67	1.28/32.51	ROUND	30u"/.76um Au- 50u"/1.27um Ni
-008						.150/3.81		SQ	150u"/3.81um TIN
-009						.675/17.15		SQ	30u"/.76um Au- 50u"/1.27um Ni
-010						.105/2.67		SQ	150u"/3.81um TIN
-011						.150/3.81		ROUND	30u"/.76um Au- 50u"/1.27um Ni
-012	2 X 10		1.45/36.83	.900/22.86	1.22/30.99	.675/17.15	1.28/32.51	SQ	150u"/3.81um TIN
-013	2 X 13		1.75/44.45	1.200/30.48	1.52/38.61	.105/2.67	1.58/40.13	ROUND	30u"/.76um Au- 50u"/1.27um Ni
-014						.150/3.81		SQ	150u"/3.81um TIN
-015						.675/17.15		SQ	30u"/.76um Au- 50u"/1.27um Ni
-016						.105/2.67		SQ	150u"/3.81um TIN
-017						.150/3.81		ROUND	30u"/.76um Au- 50u"/1.27um Ni
-018	2 X 13		1.75/44.45	1.200/30.48	1.52/38.61	.675/17.15	1.58/40.13	SQ	150u"/3.81um TIN
-019	2 X 17		2.15/54.61	1.600/40.64	1.92/48.77	.105/2.67	1.98/50.29	ROUND	30u"/.76um Au- 50u"/1.27um Ni
-020						.150/3.81		SQ	150u"/3.81um TIN
-021						.675/17.15		SQ	30u"/.76um Au- 50u"/1.27um Ni
-022						.105/2.67		SQ	150u"/3.81um TIN
-023						.150/3.81		ROUND	30u"/.76um Au- 50u"/1.27um Ni
-024	2 X 17		2.15/54.61	1.600/40.64	1.92/48.77	.675/17.15	1.98/50.29	SQ	150u"/3.81um TIN
-025	2 X 20		2.45/62.23	1.900/48.26	2.22/56.39	.105/2.67	2.28/57.91	ROUND	30u"/.76um Au- 50u"/1.27um Ni
-026						.150/3.81		SQ	150u"/3.81um TIN
-027						.675/17.15		SQ	30u"/.76um Au- 50u"/1.27um Ni
-028						.105/2.67		SQ	150u"/3.81um TIN
-029						.150/3.81		ROUND	30u"/.76um Au- 50u"/1.27um Ni
-030	2 X 20		2.45/62.23	1.900/48.26	2.22/56.39	.675/17.15	2.28/57.91	SQ	150u"/3.81um TIN
-031	2 X 25		2.95/74.93	2.400/60.96	2.72/69.09	.105/2.67	2.78/70.61	ROUND	30u"/.76um Au- 50u"/1.27um Ni
-032						.150/3.81		SQ	150u"/3.81um TIN
-033						.675/17.15		SQ	30u"/.76um Au- 50u"/1.27um Ni
-034						.105/2.67		SQ	150u"/3.81um TIN
65496-035	2 X 25	B	2.95/74.93	2.400/60.96	2.72/69.09	.150/3.81	2.78/70.61	ROUND	30u"/.76um Au- 50u"/1.27um Ni

mat'l. code		tolerances unless otherwise specified		CUSTOMER COPY		FCI	
ltr	ecr no	dr	date	linear	projection	www.fciconnect.com	
AA				.XX ±.01/.X±.3	title	HEADER,QUICKIE	
				.XXX ±.005/.XX±.13	SLIM LINE,RIGHT ANGLE	product family QKE.HDR.	
				.XXXX ±.0020/.XXX±.051	INCH/MM	code 213	
				0° ±2°	scale	sheet 3 of 7	
				dr P.JAYADEEP 09/21/04	5:1	cage code	
				enrg H.SUNDY 09/21/04		4	
				chr H.SUNDY 09/21/04		STATUS Released	
				appd H.SUNDY 09/21/04		Printed: Apr 12, 2014	
sheet index	revision sheet						

Tous droits strictement réservés. Reproduction ou communication à des tiers interdite sous quelque forme que ce soit sans autorisation écrite du propriétaire. Property of FCI. Droits de reproduction FCI.



All rights strictly reserved. Reproduction or issue to third parties in any form whatever is not permitted without written authority from the proprietor. Property of FCI. Copyright FCI.

PRODUCT NO.	SIZE	STYLE	DIM A	DIM B	DIM C	DIM D	DIM E	TERM CONFIG	TERMINAL PLATING NOTE 15
65496-036	2 X 25	B	2.95/74.93	2.400/50.96	2.72/69.09	.675/17.15	2.78/70.61	SQ	30u"/.76um Au- 50u"/1.27um Ni
-037	2 X 7		1.15/29.21	.600/15.24	.92/23.37	.105/2.67	.98/24.89	ROUND	150u"/3.81um TIN
-038						.150/3.81		SQ	30u"/.76um Au- 50u"/1.27um Ni
-039						.675/17.15		SQ	150u"/3.81um TIN
-040						.105/2.67		SQ	30u"/.76um Au- 50u"/1.27um Ni
-041						.150/3.81		ROUND	150u"/3.81um TIN
-042	2 X 7		1.15/29.21	.600/15.24	.92/23.37	.675/17.15	.98/24.89	SQ	30u"/.76um Au- 50u"/1.27um Ni
-043	2 X 8		1.25/31.75	.700/17.78	1.02/25.91	.105/2.67	1.08/27.43	ROUND	150u"/3.81um TIN
-044						.150/3.81		SQ	30u"/.76um Au- 50u"/1.27um Ni
-045						.675/17.15		SQ	150u"/3.81um TIN
-046						.105/2.67		SQ	30u"/.76um Au- 50u"/1.27um Ni
-047						.150/3.81		ROUND	150u"/3.81um TIN
-048	2 X 8		1.25/31.75	.700/17.78	1.02/25.91	.675/17.15	1.08/27.43	SQ	30u"/.76um Au- 50u"/1.27um Ni
-049	2 X 30		3.45/87.63	2.900/73.66	3.22/81.79	.105/2.67	3.28/83.31	ROUND	150u"/3.81um TIN
-050						.150/3.81		SQ	30u"/.76um Au- 50u"/1.27um Ni
-051						.675/17.15		SQ	150u"/3.81um TIN
-052						.105/2.67		SQ	30u"/.76um Au- 50u"/1.27um Ni
-053						.150/3.81		ROUND	150u"/3.81um TIN
-054	2 X 30		3.45/87.63	2.900/73.66	3.22/81.79	.675/17.15	3.28/83.31	SQ	30u"/.76um Au- 50u"/1.27um Ni
-055	2 X 5		.95/24.13	.400/10.16	.72/18.29	.105/2.67	.78/19.81	ROUND	150u"/3.81um TIN
-056	2 X 5		.95/24.13	.400/10.16	.72/18.29	.150/3.81	.78/19.81	ROUND	
-057	2 X 5		.95/24.13	.400/10.16	.72/18.29	.675/17.15	.78/19.81	SQ	
-058	2 X 7		1.15/29.21	.600/15.24	.92/23.37	.105/2.67	.98/24.89	ROUND	
-059	2 X 7		1.15/29.21	.600/15.24	.92/23.37	.150/3.81	.98/24.89	ROUND	
-060	2 X 7		1.15/29.21	.600/15.24	.92/23.37	.675/17.15	.98/24.89	SQ	
-061	2 X 8		1.25/31.75	.700/17.78	1.02/25.91	.105/2.67	1.08/27.43	ROUND	
-062	2 X 8		1.25/31.75	.700/17.78	1.02/25.91	.150/3.81	1.08/27.43	ROUND	
-063	2 X 8		1.25/31.75	.700/17.78	1.02/25.91	.675/17.15	1.08/27.43	SQ	
-064	2 X 10		1.45/36.83	.900/22.86	1.22/30.99	.105/2.67	1.28/32.51	ROUND	
-065	2 X 10		1.45/36.83	.900/22.86	1.22/30.99	.150/3.81	1.28/32.51	ROUND	
-066	2 X 10		1.45/36.83	.900/22.86	1.22/30.99	.675/17.15	1.28/32.51	SQ	
-067	2 X 13		1.75/44.45	1.200/30.48	1.52/38.61	.105/2.67	1.58/40.13	ROUND	
-068	2 X 13		1.75/44.45	1.200/30.48	1.52/38.61	.150/3.81	1.58/40.13	ROUND	
-069	2 X 13		1.75/44.45	1.200/30.48	1.52/38.61	.675/17.15	1.58/40.13	SQ	
65496-070	2 X 17	B	2.15/54.61	1.600/40.64	1.92/48.77	.105/2.67	1.98/50.29	ROUND	30u"/.76um Au- 50u"/1.27um Ni

mat'l. code		tolerances unless otherwise specified		CUSTOMER COPY		FCI	
ltr	ecn no	dr	date	linear	.xx ±.01/.xx±.3	projection	title
AA				linear	.xxx ±.005/.xxx±.13	1	HEADER,QUICKIE
				angles	.xxxx ±.0020/.xxx±.051	2	SLIM LINE,RIGHT ANGLE
				dr	0° ±2°	INCH/MM	product family
				enrg	P.JAYADEEP 09/21/04	2:1	QKE.HDR.
				chr	H.SUNDY 09/21/04		code
				appd	H.SUNDY 09/21/04		213
sheet	revision						size
index	sheet						dwg no
							65496
							sheet
							4 of 7

Tous droits strictement réservés. Reproduction ou communication à des tiers interdite sous quelque forme que ce soit sans autorisation écrite du propriétaire. Property of FCI. Droits de reproduction FCI.



All rights strictly reserved. Reproduction or issue to third parties in any form whatever is not permitted without written authority from the proprietor. Property of FCI. Copyright FCI.

PRODUCT NO	SIZE	STYLE	DIM A	DIM B	DIM C	DIM D	DIM E	TERM CONFIG	TERMINAL PLATING NOTE 15
65496-071	2 X 17	B	2.15/54.61	1.600/40.64	1.92/48.77	.150/3.81	1.98/50.29	ROUND	30u"/.76um Au- 50u"/1.27um Ni
-072	2 X 17		2.15/54.61	1.600/40.64	1.92/48.77	.675/17.15	1.98/50.29	SQ	
-073	2 X 20		2.45/62.23	1.900/48.26	2.22/56.39	.105/2.67	2.28/57.91	ROUND	
-074	2 X 20		2.45/62.23	1.900/48.26	2.22/56.39	.150/3.81	2.28/57.91	ROUND	
-075	2 X 20		2.45/62.23	1.900/48.26	2.22/56.39	.675/17.15	2.28/57.91	SQ	
-076	2 X 25		2.95/74.93	2.400/60.96	2.72/69.09	.105/2.67	2.78/70.61	ROUND	
-077	2 X 25		2.95/74.93	2.400/60.96	2.72/69.09	.150/3.81	2.78/70.61	ROUND	
-078	2 X 25		2.95/74.93	2.400/60.96	2.72/69.09	.675/17.15	2.78/70.61	SQ	
-079	2 X 30		3.45/87.63	2.900/73.66	3.22/81.79	.105/2.67	3.28/33.31	ROUND	
-080	2 X 30		3.45/87.63	2.900/73.66	3.22/81.79	.150/3.81	3.28/33.31	ROUND	
-081	2 X 30	B	3.45/87.63	2.900/73.66	3.22/81.79	.675/17.15	3.28/33.31	SQ	
-082	2 X 5	A	.95/24.13	.400/10.16	.72/18.29	.105/2.67	.78/19.81	ROUND	
-083						.150/3.81		ROUND	
-084						.675/17.15		SQ	30u"/.76um Au- 50u"/1.27um Ni
-085						.105/2.67		ROUND	30u"/.76um Au- 50u"/1.27um Ni
-086						.150/3.81		ROUND	30u"/.76um Au- 50u"/1.27um Ni
-087						.675/17.15		SQ	30u"/.76um Au- 50u"/1.27um Ni
-088						.105/2.67		SQ	150u"/3.81um TIN
-089						.150/3.81		SQ	150u"/3.81um TIN
-090		A				.675/17.15		SQ	150u"/3.81um TIN
-091		B				.105/2.67		ROUND	30u"/.76um GXT/GOLD FLASH
-092	2 X 5	A	.95/24.13	.400/10.16	.72/18.29	.105/2.67	.78/19.81	ROUND	30u"/.76um GXT/GOLD FLASH
-093	2 X 10	B	1.45/36.83	.900/22.86	1.22/30.99	.105/2.67	1.28/32.51	ROUND	30u"/.76um GXT/GOLD FLASH
-094	2 X 20		2.45/62.23	1.900/48.26	2.22/56.39	.150/3.81	2.28/57.91	ROUND	30u"/.76um GXT/GOLD FLASH
-095	2 X 7		1.15/29.21	.600/15.24	.92/23.37	.675/17.15	.98/24.89	SQ	30u"/.76um GXT/GOLD FLASH
-096	2 X 10		1.45/36.83	.900/22.85	1.22/30.99	.105/2.67	1.28/32.51	SQ	30u"/.76um Au- 50u"/1.27um Ni
-097	2 X 15		1.95/49.53	1.400/35.56	1.72/43.69		1.78/45.21	SQ	30u"/.76um Au- 50u"/1.27um Ni
-098	2 X 17		2.15/54.61	1.600/40.64	1.92/48.77		1.98/50.29	SQ	30u"/.76um Au- 50u"/1.27um Ni
-099	2 X 20		2.45/62.23	1.900/48.26	2.22/56.39		2.28/57.91	SQ	30u"/.76um Au- 50u"/1.27um Ni
-100	2 X 30		3.45/87.63	2.900/73.66	3.22/81.79		3.28/33.31	SQ	30u"/.76um Au- 50u"/1.27um Ni
-101	2 X 12		1.65/41.91	1.100/27.94	1.42/36.07	.105/2.67	1.48/37.60	ROUND	30u"/.76um Au- 50u"/1.27um Ni
-102			1.65/41.91	1.100/27.94	1.42/36.07	.150/3.81		ROUND	30u"/.76um Au- 50u"/1.27um Ni
-103			1.65/41.91	1.100/27.94	1.42/36.07	.675/17.15		SQ	30u"/.76um Au- 50u"/1.27um Ni
-104			1.65/41.91	1.100/27.94	1.42/36.07	.105/2.67		ROUND	30u"/.76um Au- 50u"/1.27um Ni
65496-105	2 X 12	B	1.65/41.91	1.100/27.94	1.42/36.07	.150/3.81	1.48/37.60	ROUND	30u"/.76um Au- 50u"/1.27um Ni

mat'l. code		tolerances unless otherwise specified		CUSTOMER COPY		FCI	
ltr	ecn no	dr	date	linear	projection	www.fciconnect.com	
AA				.XX ±.01/.X±.3	⊕	title	
				.XXX ±.005/.XX±.13		HEADER,QUICKIE	
				.XXX ±.0020/.XXX±.051		SLIM LINE,RIGHT ANGLE	
				angles	0° ±2°	product family	
				dr	P.JAYADEEP 09/21/04	QKE.HDR.	
				engr	H.SUNDY 09/21/04	code	
				chr	H.SUNDY 09/21/04	213	
				appd	H.SUNDY 09/21/04	sheet	
					scale	5 of 7	
sheet	revision					cage code	
index	sheet					65496	

1 | 2

ACAD

PDM: Rev:AA

STATUS Released 26 Printed: Apr 12, 2014

B

Tous droits strictement réservés. Reproduction ou communication à des tiers interdite sous quelque forme que ce soit sans autorisation écrite du propriétaire. Propriété de c FCI. Droits de reproduction FCI.



All rights strictly reserved. Reproduction or issue to third parties in any form whatever is not permitted without written authority from the proprietor. Property of FCI. Copyright FCI.

PRODUCT NO.	SIZE	STYLE	DIM A	DIM B	DIM C	DIM D	DIM E	TERM CONFIG	TERMINAL PLATING NOTE 15
65496-106	2 X 12	B	1.65/41.91	1.100/27.94	1.42/36.07	.675/17.15	1.48/37.60	SQ	30u"/.76um Au- 50u"/1.27um Ni
-107						.105/2.67		ROUND	30u"/.76um GXT/GOLD FLASH
-108						.150/3.81		ROUND	30u"/.76um GXT/GOLD FLASH
-109						.675/17.15		SQ	30u"/.76um GXT/GOLD FLASH
-110						.105/2.67		SQ	150u"/3.81um TIN
-111						.150/3.81		SQ	150u"/3.81um TIN
-112	2 X 12		1.65/41.91	1.100/27.94	1.42/36.07	.675/17.15	1.48/37.60	SQ	150u"/3.81um TIN
-113	2 X 15		1.95/49.53	1.400/35.80	1.72/43.69	.105/2.67	1.78/45.21	ROUND	30u"/.76um Au- 50u"/1.27um Ni
-114						.150/3.81		ROUND	30u"/.76um Au- 50u"/1.27um Ni
-115						.675/17.15		SQ	30u"/.76um Au- 50u"/1.27um Ni
-116						.105/2.67		ROUND	30u"/.76um Au- 50u"/1.27um Ni
-117						.150/3.81		ROUND	30u"/.76um Au- 50u"/1.27um Ni
-118						.675/17.15		SQ	30u"/.76um Au- 50u"/1.27um Ni
-119						.105/2.67		ROUND	30u"/.76um GXT/GOLD FLASH
-120						.150/3.81		ROUND	30u"/.76um GXT/GOLD FLASH
-121						.675/17.15		SQ	30u"/.76um GXT/GOLD FLASH
-122						.105/2.67		SQ	150u"/3.81um TIN
-123						.150/3.81		SQ	150u"/3.81um TIN
-124	2 X 15		1.95/49.53	1.400/35.80	1.72/43.69	.675/17.15	1.78/45.21	SQ	150u"/3.81um TIN
-125	2 X 22		2.65/67.31	2.100/53.34	2.42/61.47	.105/2.67	2.48/63.00	ROUND	30u"/.76um Au- 50u"/1.27um Ni
-126						.150/3.81		ROUND	30u"/.76um Au- 50u"/1.27um Ni
-127						.675/17.15		SQ	30u"/.76um Au- 50u"/1.27um Ni
-128						.105/2.67		ROUND	30u"/.76um Au- 50u"/1.27um Ni
-129						.150/3.81		ROUND	30u"/.76um Au- 50u"/1.27um Ni
-130						.675/17.15		SQ	30u"/.76um Au- 50u"/1.27um Ni
-131						.105/2.67		ROUND	30u"/.76um GXT/GOLD FLASH
-132						.150/3.81		ROUND	30u"/.76um GXT/GOLD FLASH
-133						.675/17.15		SQ	30u"/.76um GXT/GOLD FLASH
-134						.105/2.67		SQ	150u"/3.81um TIN
-135						.150/3.81		SQ	150u"/3.81um TIN
-136	2 X 22		2.65/67.31	2.100/53.34	2.42/61.47	.675/17.15	2.48/63.00	SQ	150u"/3.81um TIN
-137	2 X 5	B	.95/24.13	.400/10.16	.72/18.29	.150/3.81	.78/19.81	ROUND	30u"/.76um GXT/GOLD FLASH
-138	2 X 5	A	.95/24.13	.400/10.16	.72/18.29		.78/19.81	ROUND	30u"/.76um GXT/GOLD FLASH
-139	2 X 7	B	1.15/29.21	.600/15.24	.92/23.37		.98/24.89	ROUND	30u"/.76um GXT/GOLD FLASH
65496-140	2 X 8	B	1.25/31.75	.700/17.78	1.02/25.91	.150/3.81	1.08/27.43	ROUND	30u"/.76um GXT/GOLD FLASH

mat'l. code		tolerances unless otherwise specified		CUSTOMER COPY		www.fciconnect.com	
ltr	ecn no	dr	date	linear	.xx ±.01/.xx±.3	projection	title
AA					.xxx ±.005/.xxx±.13		HEADER,QUICKIE
				angles	.xxxx ±.0020/.xxx±.051		SLIM LINE,RIGHT ANGLE
				dr	0° ±2°	INCH/MM	product family
				enrg	P.JAYADEEP 09/21/04	5:1	QKE.HDR.
				chr	P.JAYADEEP 09/21/04		code
				appd	P.JAYADEEP 09/21/04		213
sheet	revision						size
index	sheet						dwg no
							65496
							sheet
							6 of 7

Tous droits strictement réservés. Reproduction ou communication à des tiers interdite sous quelque forme que ce soit sans autorisation écrite du propriétaire. Property of FCI. Droits de reproduction FCI.



All rights strictly reserved. Reproduction or issue to third parties in any form whatever is not permitted without written authority from the proprietor. Property of FCI. Copyright FCI.

PRODUCT NO.	SIZE	STYLE	DIM A	DIM B	DIM C	DIM D	DIM E	TERM CONFIG	TERMINAL PLATING NOTE 15
65496-141	2 X 10	B	1.45/36.83	.900/22.86	1.22/30.99	.150/3.81	1.28/32.51	ROUND	30u"/.76um GXT/GOLD FLASH
-142	2 X 13		1.75/44.45	1.200/30.48	1.52/38.61		1.58/40.13		
-143	2 X 17		2.15/54.61	1.600/40.64	1.92/48.77		1.98/50.29		
-144	2 X 25		2.95/74.93	2.400/60.96	2.72/69.09		2.78/70.61		
-145	2 X 30		3.45/87.63	2.900/73.66	3.22/81.79	.150/3.81	3.28/83.31		
-146	2 X 7		1.15/29.21	.600/15.24	.92/23.37	.105/2.67	.98/24.89		
-147	2 X 8		1.25/31.75	.700/17.78	1.02/25.91		1.08/27.43		
-148	2 X 13		1.75/44.45	1.200/30.48	1.52/38.61		1.58/40.13		
-149	2 X 17		2.15/54.61	1.600/40.64	1.92/48.77		1.98/50.29		
-150	2 X 20		2.45/62.23	1.900/48.26	2.22/56.39		2.28/57.91		
-151	2 X 25		2.95/74.93	2.400/60.96	2.72/69.09		2.78/70.61		
-152	2 X 30		3.45/87.63	2.900/73.66	3.22/81.79		3.28/83.31	ROUND	30u"/.76um GXT/GOLD FLASH
-153	2 X 13		1.75/44.45	1.200/30.48	1.52/38.61		1.58/40.13	SQ	30u"/.76um Au- 50u"/1.27um Ni
-154	2 X 25	B	2.95/74.93	2.400/60.96	2.72/69.09		2.78/70.61	SQ	30u"/.76um Au- 50u"/1.27um Ni
-155	2 X 25	C	2.95/74.93	2.400/60.96	2.72/69.09		2.78/70.61	ROUND	30u"/.76um Au- 50u"/1.27um Ni
-156	2 X 25	D	2.95/74.93	2.400/60.96	2.72/69.09	.105/2.67	2.78/70.61	ROUND	30u"/.76um Au- 50u"/1.27um Ni
65496-157	2 X 25	B	2.95/74.93	2.400/60.96	2.72/69.09	.105/2.67	2.78/70.61	ROUND	30u"/.76um Au- 50u"/1.27um Ni

NOTE 11

mat'l. code		-		tolerances unless otherwise specified		CUSTOMER COPY		FCI		www.fciconnect.com	
ltr	ecr no	dr	date	linear	.xx ±.01/.xx±.3	projection	title		HEADER,QUICKIE		
AA				angles	.xxx ±.005/.xxx±.13	INCH/MM	SLIM LINE,RIGHT ANGLE		code		
				dr	.xxx ±.0020/.xxx±.051	scale	product family		QKE.HDR.		
				enrg	0° ±2°	5:1	size		213		
				chr	P.JAYADEEP 09/21/04		dwg no		65496		
				appd	H.SUNDY 09/21/04		sheet		7 of 7		
sheet index	revision sheet						cage code		4		

ACAD

PDM: Rev:AA

STATUS Released 26 Printed: Apr 12, 2014