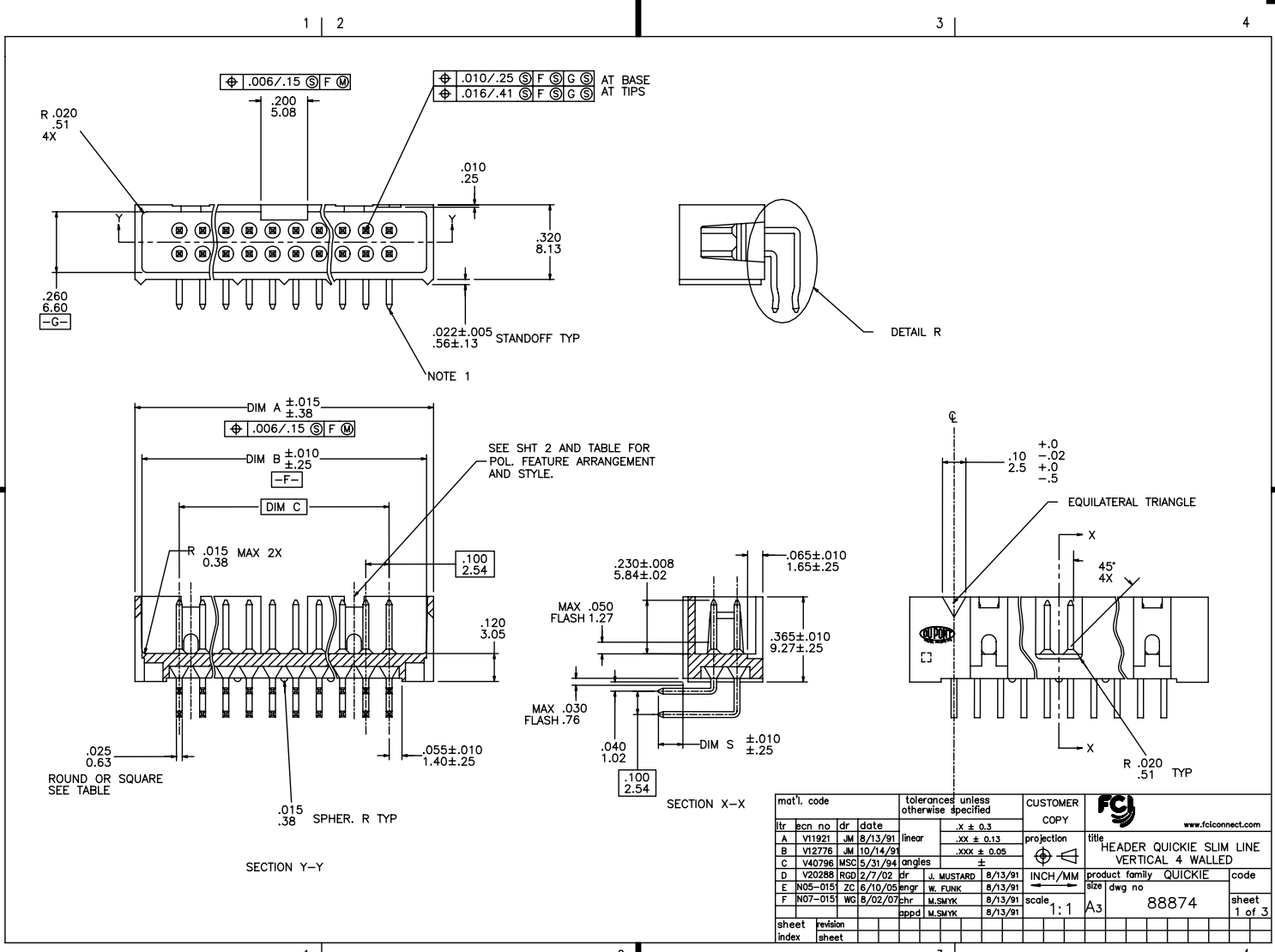


Tous droits strictement réservés. Reproduction ou communication à des tiers interdite sous quelque forme que ce soit sans autorisation écrite du propriétaire. Propriété de c FCI. Droits de reproduction FCI.

All rights strictly reserved. Reproduction or issue to third parties in any form whatever is not permitted without written authority from the proprietor. Property of FCI. Copyright FCI.

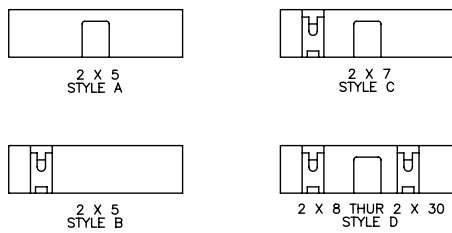


mat'l. code		tolerances unless otherwise specified		CUSTOMER	
itr	ecn no	dr	date	www.fciconnect.com	
A	V11921	JM	8/13/91	linear	.x ± 0.3
B	V12776	JM	10/14/91	projection	.xx ± 0.13
C	V40796	MSC	5/31/94	angles	.xxx ± 0.05
D	V20288	RC	2/7/02	BT	±
E	N05-015	ZC	6/10/05	engr	J. MUSTARD 8/13/91
F	N07-015	WG	5/02/07	shr	W. FLANK 8/13/91
		appd	M.SMYK	scale	1:1 A3
sheet	revision			product family	QUICKIE
index	sheet			size	88874
				dwg no	1 of 3

PDM: Rev:F STATUS Released Printed: Apr 12, 2011

Tous droits strictement réservés. Reproduction ou communication à des tiers interdite sous quelque forme que ce soit sans autorisation écrite du propriétaire. Propriété de c FCI. Droits de reproduction FCI.

All rights strictly reserved. Reproduction or issue to third parties in any form whatever is not permitted without written authority from the proprietor. Property of FCI. Copyright FCI.



KEY FOR PLATING AND TAIL LENGTH AND TYPE			
X	TERMINAL PLATING ( NOTE 9 )	DIM S $\pm 01$ $\pm 3$	TERMINAL TYPE
-0XX(LF)	30u"/.76u Au OVER 50u"/1.27u Ni	.105/2.67	RD
-1XX(LF)	30u"/.76u GXT/GOLD FLASH	.105/2.67	RD
-2XX(LF)	30u"/.76u Au OVER 50u"/1.27u Ni	.150/3.81	RD
-3XX(LF)	30u"/.76u GXT/GOLD FLASH	.150/3.81	RD
-4XX(LF)	30u"/.76u Au OVER 50u"/1.27u Ni	.105/2.67	SQ
-5XX(LF)	15u"/.38u GXT/GOLD FLASH	.105/2.67	SQ
-6XX(LF)	30u"/.76u Au OVER 50u"/1.27u Ni	.150/3.81	SQ
-7XX(LF)	30u"/.76u GXT/GOLD FLASH	.150/3.81	SQ
-8XX(LF)	15u"/.38u Au OVER 50u"/1.27u Ni	.150/3.81	SQ
-9XX(LF)	30u"/.76u GXT/GOLD FLASH	.105/2.67	SQ

NOTES:

- ① SAME PIN POSITION TOLERANCE APPLIES TO BOTH ENDS OF EACH TERMINAL.
- ② MOLDING MAT'L: 30% GLASS-FILLED POLYESTER, FLAME RETARDANT PER UL-94V-0, COLOR: BLUE.
3. 1° MAX DRAFT PERMISSIBLE ON ALL SURFACES.
4. 4 POUNDS/1.8 KILOGRAMS MIN. TERM. PULL-OUT FORCE.
- ⑤ TERMINAL MAT'L: PHOSPHOR BRONZE.
- ⑥ A. PART NUMBERS HAVING AN "R" FOLLOWING THE 8 DIGIT PART NUMBER (EXAMPLE 89239-010R) HAVE TWO PAIRS OF PINS AT EACH END TO PROVIDE RETENTION. LOCATION IS MANUFACTURER'S OPTION. SEE DETAIL "R" SHEET 1.
- B. CONNECTORS WITH RETENTION AND ROUND PINS HAVE 15LB./6.8KG. MAX INSERTION AND .25LB./11KG. MIN RETENTION FORCE WHEN USED IN A .035/0.89±.003/0.08 DIA HOLE AND .062/1.58 THICK P.C.BOARD.
- C. CONNECTORS WITH RETENTION AND SQUARE PINS HAVE A 15LB./6.8KG. MAX INSERTION AND A .5LB./23KG. MIN RETENTION WHEN USED IN A .040/1.02±.003/0.08 DIA HOLE AND A .062/1.58 THICK P.C.BOARD.
7. THE HOUSING OF XXXX-YYLF WILL WITHSTAND EXPOSURE TO 260°C PEAK TEMPERATURE FOR 10 SECONDS IN A WAVE SOLDER PROCESS.
8. 88874-\*\*\*LF IS JUST A LEAD FREE PRODUCT.
9. PLATING OPTION: MAYBE EITHER GOLD OR GXT PLATING AT MANUFACTURER'S OPTION.

mat'l. code		tolerances unless otherwise specified		CUSTOMER COPY		 www.fciconnect.com	
ltr	ecm no	dr	date	linear	.x ± 0.3	projection	title
F					.xx ± 0.13		HEADER QUICKIE SLIM LINE VERTICAL 4 WALLED
					.xxx ± 0.05		product family QUICKIE
				angles	±	INCH/MM	code
				dr	J. MUSTARD 8/13/91	size	88874
				enrg	W. FUNK 8/13/91	scale	2 of 3
				chr	W.SMYK 8/13/91	1:1	
				pppd	W.SMYK 8/13/91	A3	
sheet	revision						
index	sheet						

Tous droits strictement réservés. Reproduction ou communication à des tiers interdite sous quelque forme que ce soit sans autorisation écrite du propriétaire. Propriété de c FCI. Droits de reproduction FCI.

All rights strictly reserved. Reproduction or issue to third parties in any form whatever is not permitted without written authority from the proprietor. Property of FCI. Copyright FCI.



NOTE 6	POS	DIM A	DIM B	DIM C	STYLE
88874-X02(LF)	2X5	.78/19.8	.72/18.3	.400/10.16	B
-X08(LF)	2X4	.68/17.3	.62/15.8	.300/7.62	A
-X10(LF)	2X5	.78/19.8	.72/18.3	.400/10.16	A
-X14(LF)	2X7	.98/24.9	.92/23.4	.600/15.24	C
-X16(LF)	2X8	1.08/27.9	1.02/25.9	.700/17.78	D
-X20(LF)	2X10	1.28/32.5	1.22/31.0	.900/22.86	
-X24(LF)	2X12	1.48/37.6	1.42/36.1	1.100/27.94	
-X26(LF)	2X13	1.58/40.1	1.52/38.6	1.200/30.48	
-X30(LF)	2X15	1.78/45.2	1.72/43.7	1.400/35.56	
-X34(LF)	2X17	1.98/50.3	1.92/48.8	1.600/40.64	
-X40(LF)	2X20	2.28/57.9	2.22/56.4	1.900/48.26	
-X44(LF)	2X22	2.48/63.0	2.42/61.5	2.100/53.34	
-X50(LF)	2X25	2.78/70.6	2.72/69.1	2.400/60.96	
88874-X60(LF)	2X30	3.28/83.3	3.22/81.8	2.900/73.66	D

mat'l. code		tolerances unless otherwise specified		CUSTOMER COPY		www.fciconnect.com	
ltr	ecn no	dr	date	linear	.X ± 0.3	projection	title
F					.XX ± 0.13		HEADER QUICKIE SLIM LINE VERTICAL 4 WALLED
				angles	.XXX ± 0.05		
				dr	J. MUSTARD 8/13/91	INCH/MM	product family QUICKIE
				enrg	W. FUNK 8/13/91	scale	code
				chr	W. SMYK 8/13/91	1:1	88874
				appd	W. SMYK 8/13/91	A3	sheet 3 of 3
sheet	revision						
index	sheet						

PDM: Rev:F 3 STATUS Released 4 Printed: Apr 12, 2011