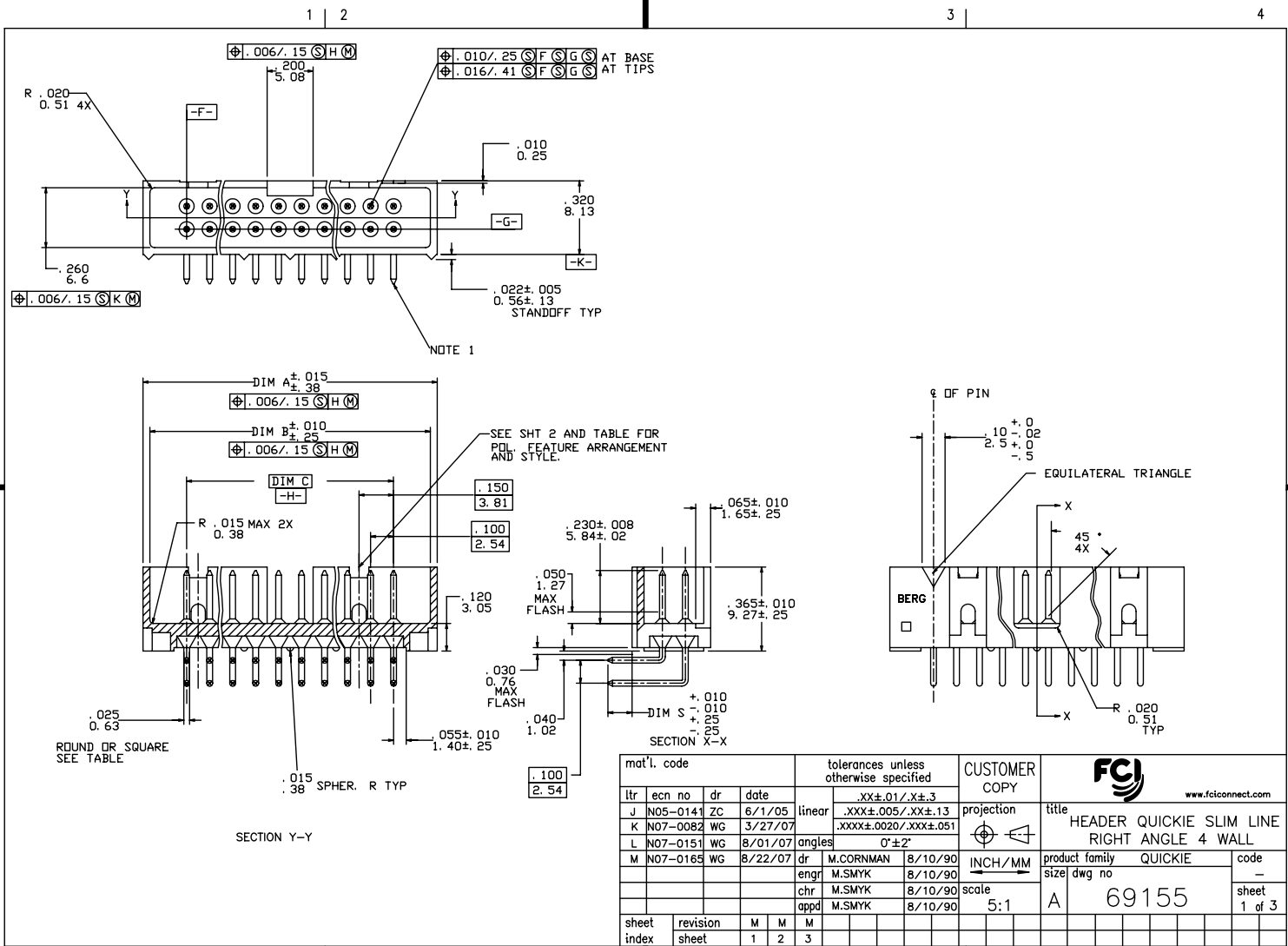


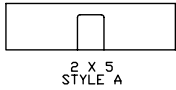
Tous droits strictement réservés. Reproduction ou communication à des tiers interdite sous quelque forme que ce soit sans autorisation écrite du propriétaire. Propriété de c FCI. Droits de reproduction FCI.



All rights strictly reserved. Reproduction or issue to third parties in any form whatever is not permitted without written authority from the proprietor. Property of FCI. Copyright FCI.



mat'l. code				tolerances unless otherwise specified		CUSTOMER COPY		 www.fciconnect.com	
ltr	ecr no	dr	date	linear	.XX±.01/.X±.3	projection	title		
J	N05-0141	ZC	6/1/05		.XXX±.005/.XX±.13		HEADER QUICKIE SLIM LINE		
K	N07-0082	WG	3/27/07		.XXX±.0020/.XXX±.051		RIGHT ANGLE 4 WALL		
L	N07-0151	WG	8/01/07	angles	0°±2'	product family		code	
M	N07-0165	WG	8/22/07	dr	M.CORNMAN 8/10/90	QUICKIE		-	
				enr	M.SMYK 8/10/90	size		dwg no	
				chr	M.SMYK 8/10/90	scale		A 69155	
				appd	M.SMYK 8/10/90	5:1		1 of 3	
sheet index	revision	M	M	M					
	sheet	1	2	3					



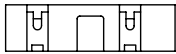
2 X 5
STYLE A



2 X 7
STYLE C



2 X 5
STYLE B



2 X 8 THUR 2 X 30
STYLE D

KEY FOR PLATING AND TAIL LENGTH AND TYPE

X	TERMINAL PLATING (NOTE 10)	DIM S	TERMINAL TYPE
-0XX(LF)	30u" / .76u Au OVER 50u" / 1.27u Ni	.105/2.67	RD
-1XX(LF)	30u" / .76 GXT GOLD FLASH	.105/2.67	RD
-2XX(LF)	30u" / .76u Au OVER 50u" / 1.27u Ni	.150/3.81	RD
-3XX(LF)	30u" / .76 GXT GOLD FLASH	.150/3.81	RD
-4XX(LF)	30u" / .76u Au OVER 50u" / 1.27u Ni	.105/2.67	SQ
-5XX(LF)	30u" / .76 GXT GOLD FLASH	.105/2.67	SQ
-6XX(LF)	30u" / .76u Au OVER 50u" / 1.27u Ni	.150/3.81	SQ
-7XX(LF)	30u" / .76 GXT GOLD FLASH	.150/3.81	SQ
-8XX(LF)	15u" / .38u Au OVER 50u" / 1.27u Ni	.150/3.81	SQ
-9XX(LF)	15u" / .38u Au OVER 50u" / 1.27u Ni	.105/2.67	SQ

NOTES

- ① SAME PIN POSITION TOLERANCE APPLIES TO BOTH ENDS OF EACH TERMINAL.
- ② MOLDING MAT'L: 30% GLASS-FILLED POLYESTER, FLAME RETARDANT PER UL 94-V0, COLOR: BLUE.
3. 1° MAX DRAFT PERMISSIBLE ON ALL SURFACES.
4. 1.8 KILOGRAMS/4 POUNDS MIN. TERM. PULL-OUT FORCE.
5. TERMINAL MAT'L: PHOSPHOR BRONZE.
- ⑥ A. PART NUMBERS HAVING AN 'R' FOLLOWING THE 8 DIGIT P/N (EXAMPLE 69155-010 R) HAVE A RETENTION FEATURE. LOCATION IS MANUFACTURER'S OPTION.
B. CONNECTORS WITH RETENTION AND ROUND PINS HAVE 15LB/6.8KG MAX INSERTION AND .25LB/.11KG MIN RETENTION FORCE WHEN USED IN A .035/.89±.003/.08 DIA HOLE AND .062/1.58 THICK PCB BOARD
C. CONNECTORS WITH RETENTION AND SQUARE PINS HAVE A 15LB/6.8KG MAX INSERTION AND A .5LB/.23KG MIN RETENTION WHEN USED IN A .040/1.02±.003/.08 DIA HOLE AND A .062/1.58 THICK PCB BOARD.
- ⑦ DIMENSION 'A' FOR -034 HAS A MAXIMUM SIZE OF 1.990/50.6
8. 69155-***LF IS JUST A LEAD FREE PRODUCT.
9. THE HOUSING OF XXXX-XYLFF WILL WITHSTAND EXPOSURE TO 260°C PEAK TEMPERATURE FOR 10 SECONDS IN A WAVE SOLDER PROCESS.
10. PLATING OPTION: MAYBE EITHER GOLD OR GXT PLATING AT MANUFACTURER'S OPTION
11. FOR 69155-150LF, THE TOLERANCE OF DIM 'S' IS ' -0.10 , +0.35 '.

Tous droits strictement réservés. Reproduction ou communication à des tiers interdite sous quelque forme que ce soit sans autorisation écrite du propriétaire. Propriété de c FCI. Droits de reproduction FCI.



All rights strictly reserved. Reproduction or issue to third parties in any form whatever is not permitted without written authority from the proprietor. Property of FCI. Copyright FCI.

mat'l. code				tolerances unless otherwise specified		CUSTOMER COPY		 www.fciconnect.com	
ltr	ecn no	dr	date	linear	.XX±.01/.X±.3	projection		title	
M				angles	.XXX±.005/.XX±.13 .XXX±.0020/.XXX±.051	INCH/MM		HEADER QUICKIE SLIM LINE RIGHT ANGLE 4 WALL	
				dr	M.CORNMAN 8/10/90	scale	5:1	product family	code
				enfr	M.SMYK 8/10/90	A		QUICKIE	-
				chr	M.SMYK 8/10/90			size/ dwg no	sheet
				appd	M.SMYK 8/10/90			69155	2 of
sheet index	revision								
	sheet								

PDM: Rev:M

STATUS Released

Printed: Apr 12, 2011


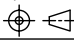
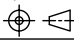
Tous droits strictement réservés. Reproduction ou communication à des tiers interdite sous quelque forme que ce soit sans autorisation écrite du propriétaire. Property of FCI. Copyright FCI. Droits de reproduction FCI.

All rights strictly reserved. Reproduction or issue to third parties in any form whatever is not permitted without written authority from the proprietor. Property of FCI. Copyright FCI.

PRODUCT NO NOTE 6	POS	DIM A	DIM B	DIM C	STYLE
69155-X02(LF)	2X5	. 78/19. 8	. 72/18. 3	. 400/10. 16	B
-X10(LF)	2X5	. 78/19. 8	. 72/18. 3	. 400/10. 16	A
-X14(LF)	2X7	. 98/24. 9	. 92/23. 4	. 600/15. 24	C
-X16(LF)	2X8	1. 08/27. 9	1. 02/25. 9	. 700/17. 78	D
-X20(LF)	2X10	1. 28/32. 5	1. 22/31. 0	. 900/22. 86	↑
-X24(LF)	2X12	1. 48/37. 6	1. 42/36. 1	1. 100/27. 94	
-X26(LF)	2X13	1. 58/40. 1	1. 52/38. 6	1. 200/30. 48	
-X30(LF)	2X15	1. 78/45. 2	1. 72/43. 7	1. 400/35. 56	
-X34(LF)	2X17	1. 98/50. 3	1. 92/48. 8	1. 600/40. 64	
-X40(LF)	2X20	2. 28/57. 9	2. 22/56. 4	1. 900/48. 26	
-X44(LF)	2X22	2. 48/63. 0	2. 42/61. 5	2. 100/53. 34	
-X50(LF)	2X25	2. 78/70. 6	2. 72/69. 1	2. 400/60. 96	↓
69155-X60(LF)	2X30	3. 28/83. 3	3. 22/81. 8	2. 900/73. 66	D

NOTE 7

NOTE 11

mat'l. code				tolerances unless otherwise specified		CUSTOMER COPY		 www.fciconnect.com	
ltr	ecn no	dr	date	linear	.XX±.01/.X±.3	projection	title		
M					.XXX±.005/.XX±.13		HEADER QUICKIE SLIM LINE		
				angles	.XXX±.0020/.XXX±.051		RIGHT ANGLE 4 WALL		
				dr	0°±2'	INCH/MM	product family	QUICKIE	code
				enr	M.CORNMAN 8/10/90	5:1	size	dwg no	—
				chr	M.SMYK 8/10/90	A	69155		sheet
				appd	M.SMYK 8/10/90				3 of
sheet index	revision								
	sheet								

PDM: Rev:M

STATUS Released

Printed: Apr 12, 2011