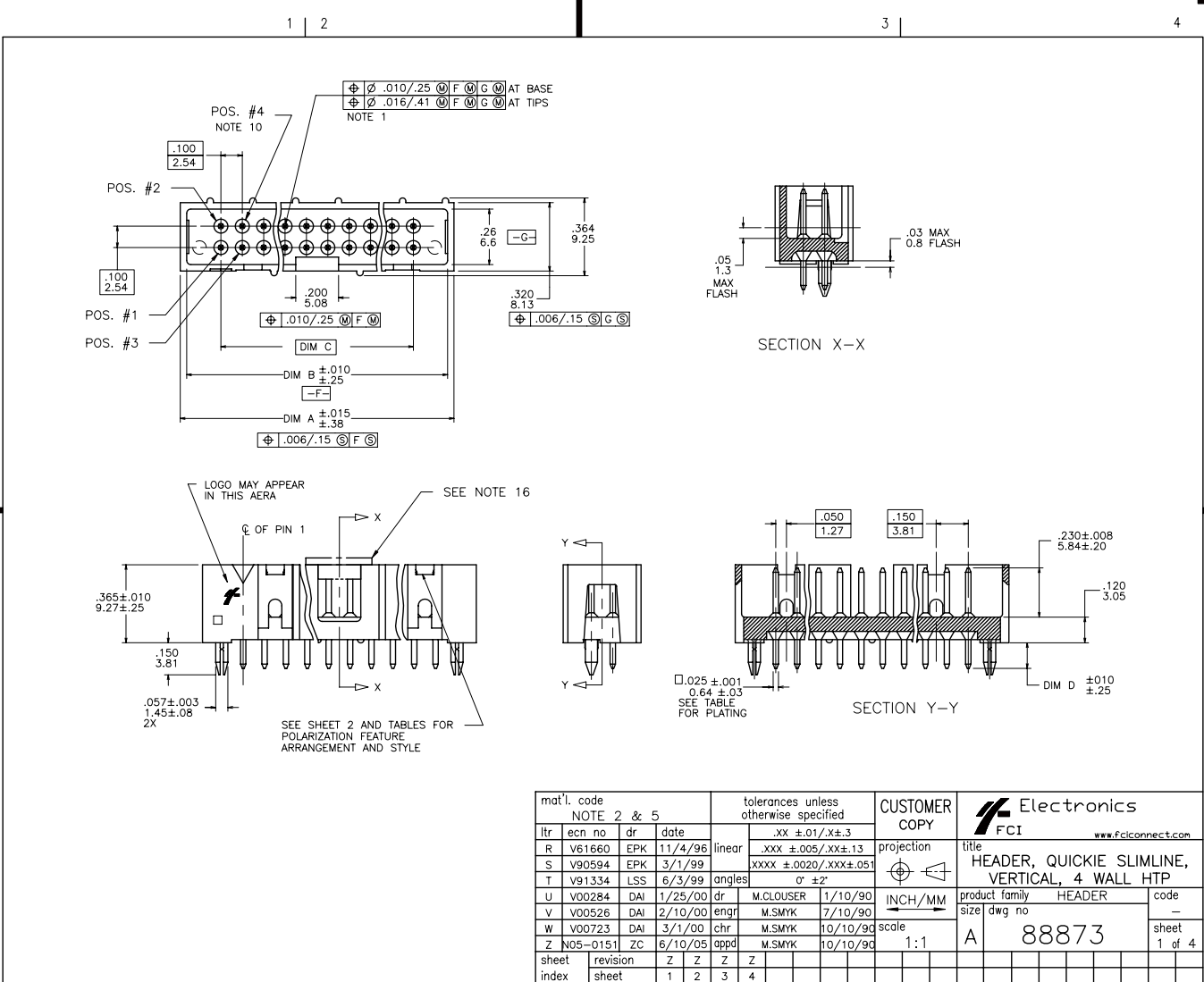


Tous droits strictement réservés. Reproduction ou communication à des tiers
Interdite sous quelque forme que ce soit sans autorisation écrite du propriétaire.
Propriété de © FCI. Droits de reproduction FCI.

All rights strictly reserved. Reproduction or issue to third parties in any
form whatever is not permitted without written authority from the proprietor.
Property of FCI. Copyright FCI.



mat'l. code		NOTE 2 & 5		tolerances unless otherwise specified		CUSTOMER COPY		Electronics www.fciconnect.com	
ltr	ecn no	dr	date	linear	.XX ±.01/.X±.3	projection	title		
R	V61660	EPK	11/4/96		.XXX ±.005/.XX±.13		HEADER, QUICKIE SLIMLINE, VERTICAL, 4 WALL HTP		
S	V90594	EPK	3/1/99		XXXX ±.0020/.XXX±.051		product family HEADER code		
T	V91334	LSS	6/3/99	angles	° ±2'	INCH/MM	size		sheet
U	V00284	DAI	1/25/00	dr	M.CLOUSER 1/10/90	scale	A 88873		1 of 4
V	V00526	DAI	2/10/00	engr	M.SMYK 7/10/90	1:1	cage code		
W	V00723	DAI	3/1/00	chr	M.SMYK 10/10/90		4		
Z	N05-0151	ZC	6/10/05	appd	M.SMYK 10/10/90		26		
sheet index	revision	Z	Z	Z	Z		Printed: Apr 12, 2014		

ACAD

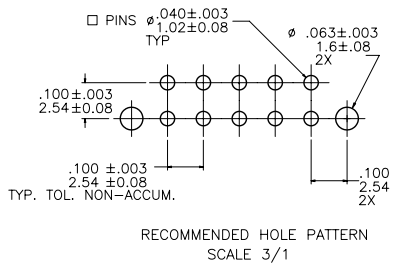
PDM: Rev:X

STATUS Released

Tous droits strictement réservés. Reproduction ou communication à des tiers
 interdite sous quelque forme que ce soit sans autorisation écrite du propriétaire.
 Property of FCI. Droits de reproduction FCI.

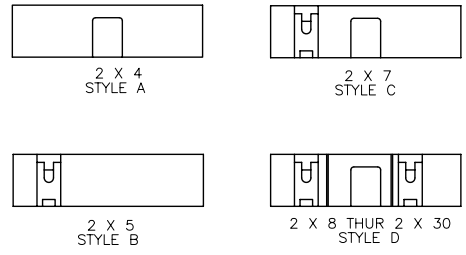
All rights strictly reserved. Reproduction or issue to third parties in any
 form whatever is not permitted without written authority from the proprietor.
 Property of FCI. Copyright FCI.

KEY FOR PLATING AND OPTIONS				TAIL LENGTH
X	TERMINAL PLATING	RETENTION NOTE 6	ORIENTATION POST NOTE 7	DIM D
-0XX(LF)	15u" / .38u GXT	NO	YES	.120/3.05
-1XX(LF)	15u" / .38u GXT	NO	NO	.120/3.05
-2XX(LF)	30u" / .76u GXT	NO	NO	.445/11.30
-3XX(LF)	15u" / .38u GXT	YES	NO	.120/3.05
-4XX(LF)	30u" / .76u GXT	NO	YES	.120/3.05
-5XX(LF)	30u" / .76u GXT	YES	NO	.120/3.05
-6XX(LF)	30u" / .76u GXT	NO	NO	.120/3.05
-7XX(LF)	30u" / .76u GXT	NO	NO	.105/2.67
-8XX(LF)	30u" / .76u GXT	NO	NO	.085/2.16
-9XX(LF)	15u" / .38u GXT DUPLIX	NO	YES	.105/2.67



* NOTE 15

- NOTES:
- ① SAME PIN POSITION TOLERANCE APPLIES TO BOTH ENDS OF EACH TERMINAL.
 - ② MOLDING MAT'L: GLASS-FILLED POLYESTER PCT, FLAME RETARDANT PER UL-94V-0, COLOR: BEIGE
 3. 1° MAX DRAFT PERMISSIBLE ON ALL SURFACES.
 4. 4 POUNDS/1.8 KILOGRAMS MIN TERMINAL PULL-OUT FORCE.
 - ⑤ TERMINAL MAT'L: PHOSPHOR BRONZE.
 - ⑥ 15 POUNDS / 6.8 KILOGRAMS MAX INSERTION FORCE AND .5 POUNDS/ 2.26 KILOGRAMS MIN RETENTION FORCE USING .062/1.57 THICK CIRCUIT BOARDS AND RECOMMENDED HOLE PATTERN.
 - ⑦ ORIENTATION POSTS ARE UNAVAILABLE WITH RETENTION PINS. RETENTION PINS ARE UNAVAILABLE WITH ORIENTATION POSTS.
 8. P/N'S WITH "T" BEHIND THEM REQUIRE TUBE PACKAGING PER BUS-14-112.
 - ⑨ MAY BE ORDERED WITH G-PAX PACKAGING BY ADDING "G" TO THE DASH NUMBER PER GES-14-314.
 - ⑩ POSITION #4 POLARIZED ON -206.
 - ⑪ POSITION #20 POLARIZED ON -061.
 - ⑫ POSITION #5 POLARIZED ON -062.
 - ⑬ POSITION #25 POLARIZED ON -363.
 - ⑭ POSITION #3 POLARIZED ON -366
 - ⑮ SOLDER DIP PROCESS ACCEPTABLE (TIN-LEAD TAILS)
 - ⑯ P/N'S WITH "V" BEHIND THEM REQUIRE PICK-UP CAPS.
 - ⑰ "D" DENOTES CUSTOMER SPECIAL.
 18. THE HOUSING OF XXXX-XYLF WILL WITHSTAND EXPOSURE TO 260°C PEAK TEMPERATURE FOR 10 SECONDS IN A WAVE SOLDER PROCESS.
 19. 88873-***LF IS JUST A LEAD FREE PRODUCT.

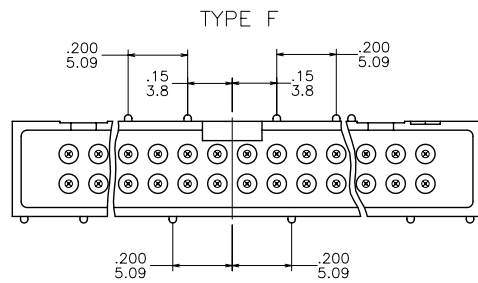
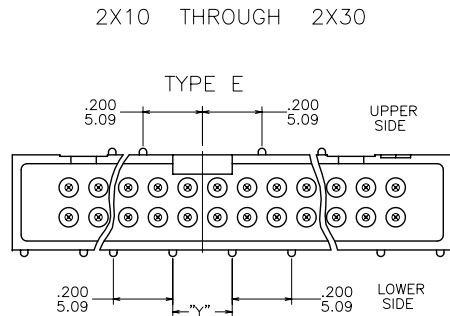
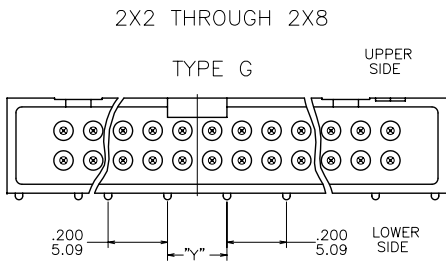


mat'l. code		tolerances unless otherwise specified		CUSTOMER COPY		 www.fciconnect.com	
ltr	ecn no	dr	date	linear	.XX ±.01/.XX±.3	projection	title
z					.XXX ±.005/.XX±.13	 INCH/MM	HEADER, QUICKIE SLIMLINE, VERTICAL, 4 WALL HTP
				angles	XXXX ±.0020/.XXX±.051		product family
				dr	0° ±2°	scale	HEADER
				enrg	M.CLOUSER 1/4/93	1:1	size
				chr	M.SMYK 1/4/93		dwg no
				appd	M.SMYK 1/4/93		88873
sheet	revision						code
index	sheet						2 of

Tous droits strictement réservés. Reproduction ou communication à des tiers interdite sous quelque forme que ce soit sans autorisation écrite du propriétaire. Propriété de © FCI. Droits de reproduction FCI.

All rights strictly reserved. Reproduction or issue to third parties in any form whatever is not permitted without written authority from the proprietor. Property of FCI. Copyright FCI.

SIZE	TYPE	DIM "Y" REF	NO. OF POS. AT UPPER SIDE	NO. OF POS. AT LOWER SIDE
2 X 2	G	.300/7.64	0	2
2 X 3	G	.100/2.54	0	4
2 X 4	G	.200/5.09	0	4
2 X 5	G	.300/7.64	0	4
2 X 6	G	.200/5.09	0	4
2 X 7	G	.100/2.54	0	6
2 X 8	G	.200/5.09	0	6
2 X 10	F	—	2	7
2 X 12	E	.200/5.09	2	8
2 X 13	E	.300/7.64	3	8
2 X 15	E	.100/2.54	4	10
2 X 17	E	.300/7.64	5	10
2 X 18	F	—	6	11
2 X 20	E	.200/5.09	7	12
2 X 22	F	—	8	13
2 X 25	E	.300/7.64	9	14
2 X 30	F	—	12	17



mat'l. code		tolerances unless otherwise specified		CUSTOMER COPY		Electronics www.fciconnect.com	
ltr	ecn no	dr	date	linear	.XX ±.01/.X±.13	projection	
Z					.XXX ±.005/.XX±.13	INCH/MM	
				angles	XXXX ±.0020/.XXX±.051	scale	title HEADER, QUICKIE SLIMLINE, VERTICAL, 4 WALL HTP
				dr	M.CLOUSER 1/4/93	1:1	product family
				enrg	M.SMYK 1/4/93		HEADER
				chr	M.SMYK 1/4/93		code
				appd	M.SMYK 1/4/93		88873
sheet	revision						code
index	sheet						26

ACAD

PDM: Rev:X

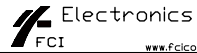
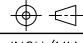
STATUS Released 26 Printed: Apr 12, 2011

Tous droits strictement réservés. Reproduction ou communication à des tiers interdite sous quelque forme que ce soit sans autorisation écrite du propriétaire. Propriété de FCI. Droits de reproduction FCI.

All rights strictly reserved. Reproduction or issue to third parties in any form whatever is not permitted without written authority from the proprietor. Property of FCI. Copyright FCI.

PRODUCT NUMBER	DIM A	DIM B	DIM C	STYLE	SIZE
88873-X04 (LF)	.480/12.19	.420/10.67	.100/2.54	A	2 X 2
-X06 (LF)	.580/14.73	.520/13.21	.200/5.08	A	2 X 3
-X06D (LF)	.580/14.73	.520/13.21	.200/5.08	A	2 X 3
-X08 (LF)	.680/17.27	.620/15.75	.300/7.62	A	2 X 4
-X08D (LF)	.680/17.27	.620/15.75	.300/7.62	A	2 X 4
-X09 (LF)	.780/19.81	.720/18.29	.400/10.16	A	2 X 5
-X10 (LF)	.780/19.81	.720/18.29	.400/10.16	B	2 X 5
-X12 (LF)	.880/22.35	.820/20.83	.500/12.70	A	2 X 6
-X14 (LF)	.980/24.90	.920/23.37	.600/15.24	C	2 X 7
-X16 (LF)	1.080/27.90	1.020/25.91	.700/17.78	D	2 X 8
-X20 (LF)	1.280/32.51	1.220/30.99	.900/22.86		2 X 10
-X24 (LF)	1.480/37.59	1.420/36.07	1.100/27.94		2 X 12
-X26 (LF)	1.580/40.13	1.520/38.61	1.200/30.48		2 X 13
-X30 (LF)	1.780/45.21	1.720/43.69	1.400/35.56		2 X 15
-X34 (LF)	1.980/50.29	1.920/48.77	1.600/40.64		2 X 17
-X36 (LF)	2.080/52.83	2.020/51.31	1.700/43.18		2 X 18
-X40 (LF)	2.280/57.91	2.220/56.39	1.900/48.26		2 X 20
-X44 (LF)	2.480/62.99	2.420/61.47	2.100/53.34		2 X 22
-X50 (LF)	2.780/70.61	2.720/69.09	2.400/60.96		2 X 25
-X60 (LF)	3.280/83.31	3.220/81.79	2.900/73.66		2 X 30
-061 (LF)	2.280/57.91	2.220/56.39	1.900/48.26		2 X 20
-062 (LF)	1.980/50.29	1.920/48.77	1.600/40.64	D	2 X 17
-206 (LF)	.580/14.73	.520/13.21	.200/5.08	A	2 X 3
-207 (LF)	.580/14.73	.520/13.21	.200/5.08	A	2 X 3
-363 (LF)	2.780/70.61	2.720/69.09	2.400/60.96	D	2 X 25
-366 (LF)	1.980/50.29	1.920/48.77	1.600/40.64		2 X 17
-934 (LF)	1.980/50.29	1.920/48.77	1.600/40.64		2 X 17
88873-950 (LF)	2.780/70.61	2.720/69.09	2.400/60.96	D	2 X 25

NOTE 17
NOTE 9
NOTE 17
NOTE 9
NOTE 9
NOTE 9
NOTE 11
NOTE 12
NOTE 10
NOTE 13
NOTE 14

mat'l. code				tolerances unless otherwise specified			CUSTOMER COPY		 www.fciconnect.com	
ltr	ecn no	dr	date	linear	.XX ±.01/.X±.3	projection	 INCH/MM	title		
Z					.XXX ±.005/.XX±.13			HEADER, QUICKIE SLIMLINE, VERTICAL, 4 WALL HTP		
				angles	XXXX ±.0020/.XXX±.051		product family	code		
				dr	M.CLOUSER 1/4/93		size	-		
				engr	M.SMYK 1/4/93		dwg no	-		
				chr	M.SMYK 1/4/93	scale	88873		sheet	
				appd	M.SMYK 1/4/93	1:1	4 of			
sheet index	revision sheet									