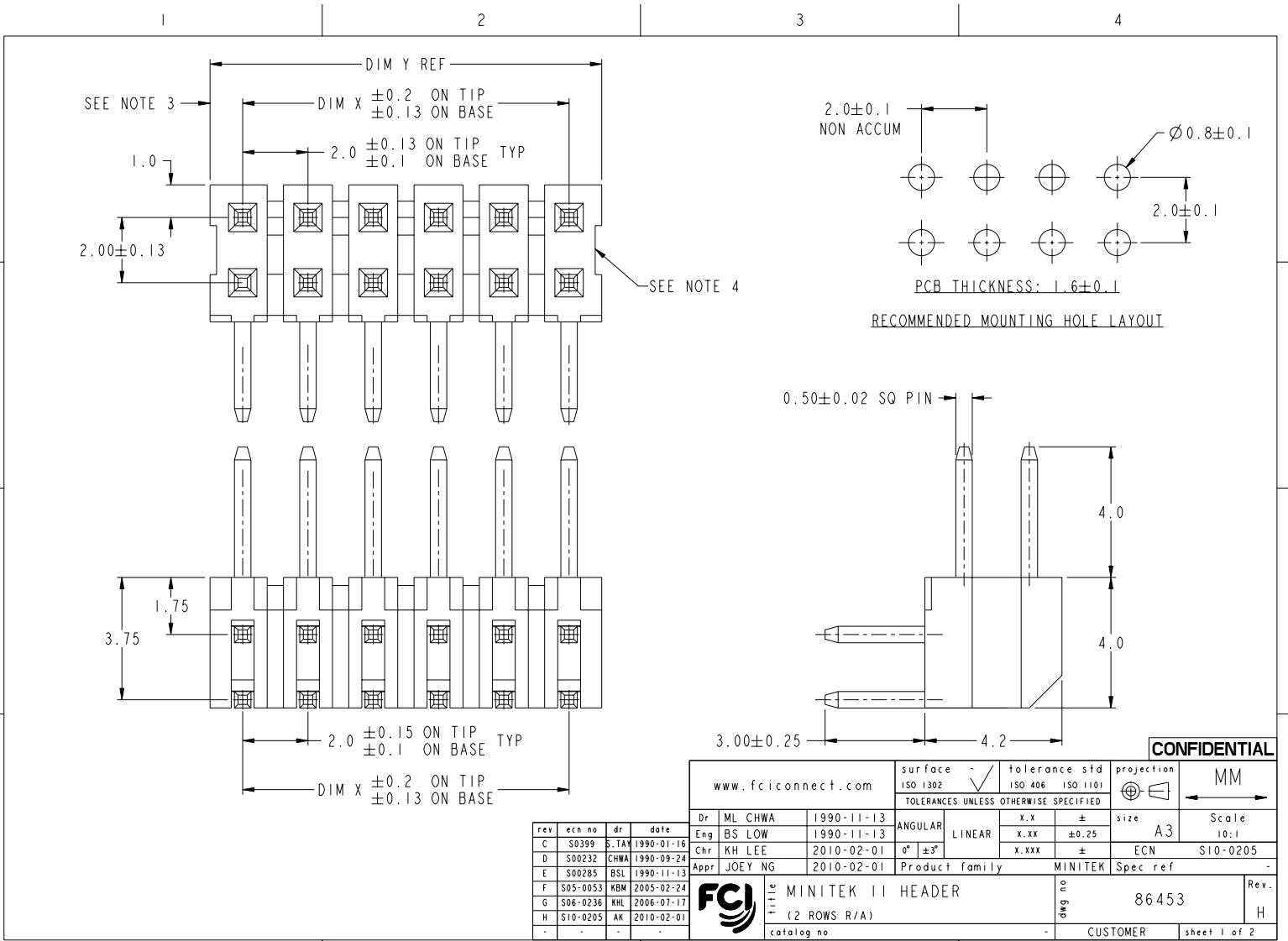


Copyright FCI



rev	ecn no	dr	date
C	S0399	S.TAY	1990-01-16
D	S00232	CHWA	1990-09-24
E	S00285	BSL	1990-11-13
F	S05-0053	KBM	2005-02-24
G	S06-0236	KHL	2006-07-17
H	S10-0205	AK	2010-02-01
-	-	-	-

www.fciconnect.com		surface -	tolerance std	projection	MM
		ISO 1302	ISO 406 ISO 1101		Scale
		TOLERANCES UNLESS OTHERWISE SPECIFIED			10:1
Dr	ML CHWA	1990-11-13	ANGULAR	size	A3
Eng	BS LOW	1990-11-13	LINEAR	x.x	±
Chr	KH LEE	2010-02-01	$0^\circ \pm 3^\circ$	x.xx	± 0.25
Appr	JOEY NG	2010-02-01	Product family	x.xxx	±
				ECN	S10-0205
				Spec ref	-
MINITEK II HEADER (2 ROWS R/A)				dwg no	86453
catalog no				CUSTOMER	sheet 1 of 2

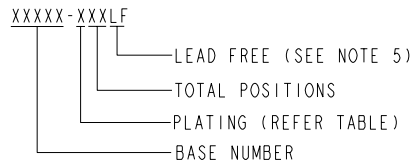
CONFIDENTIAL

REV E - 2010-02-28

PDM: Rev:H STATUS Released Printed: Oct 13, 2010

PRODUCT NO	POS	DIM X	DIM Y
86453-X02	2 X 1	— OBSOLETE —	
X04	2 X 2	2	4
X06	2 X 3	4	6
X08	2 X 4	6	8
X10	2 X 5	8	10
X12	2 X 6	10	12
X14	2 X 7	12	14
X16	2 X 8	14	16
X18	2 X 9	16	18
X20	2 X 10	18	20
X22	2 X 11	20	22
X24	2 X 12	22	24
X26	2 X 13	24	26
X28	2 X 14	26	28
X30	2 X 15	28	30
X32	2 X 16	30	32
X34	2 X 17	32	34
X36	2 X 18	34	36
X38	2 X 19	36	38
X40	2 X 20	38	40
X42	2 X 21	40	42
X44	2 X 22	42	44
X46	2 X 23	44	46
X48	2 X 24	46	48
X50	2 X 25	48	50

PRODUCT DESCRIPTION CODE :



NOTES:

- MATERIAL:
BODY : GLASS FILLED NYLON UL 94V-0 BLACK
PIN : PHOSPHOR BRONZE
- TOLERANCE UNLESS OTHERWISE NOTED ± 0.25
- DIM 1.0 APPLIES TO MOLDED SIDE(S) ONLY.
IF SIDE(S) ARE SAW, DIM 0.5 MIN APPLIES.
- RECESS APPLIES TO MOLDED SIDE(S) ONLY.
- P/N:86453-XXXLF IS SAME AS P/N:86453-XXX. THE SUFFIX 'LF' IS ADDED JUST FOR EASY LEAD FREE IDENTIFICATION
- THE HOUSING WILL WITHSTAND EXPOSURE TO 260°C PEAK TEMPERATURE FOR 10 SECONDS IN A WAVE SOLDER APPLICATION WITH A 1.57MM MINIMUM THICK CIRCUIT BOARD.
- THIS PRODUCT MEETS EUROPEAN UNION DIRECTIVES AND OTHER COUNTRY REGULATIONS AS DESCRIBED IN GS-22-008.
- A Δ SYMBOL WILL BE NEXT TO ANY DIMENSION, VIEW OR NOTE WHICH HAS BEEN MODIFIED WITH THE CURRENT DRAWING REVISION.

PLATING	DESCRIPTION
0	0.2 μ m Au
1	0.76 μ m Au
2	UNASSIGNED
3	0.38 μ m Au
4	UNASSIGNED
5	0.38 μ m GXT
6	0.76 μ m GXT



Copyright FCI.

CONFIDENTIAL

www.fciconnect.com			surface \checkmark ISO 1302	tolerance std ISO 406 ISO 1101	projection MM
			TOLERANCES UNLESS OTHERWISE SPECIFIED		
Dr	ML CHWA	1990-11-13	ANGULAR	x.x	\pm
Eng	BS LOW	1990-11-13	LINEAR	x.xx	± 0.25
Chr	KH LEE	2010-02-01	$0^\circ \pm 3^\circ$	x.xxx	\pm
Appr	JOEY NG	2010-02-01	Product family	MINITEK	Spec ref
			title MINITEK II HEADER (2 ROWS R/A)		dwg no 86453
catalog no			CUSTOMER		Rev. H

REV E - 2006-03-28