

4

3

2

1

NOTES:

△ PART NUMBER VARIABLES: (SEE SHEET 2 FOR ADDITIONAL INFORMATION)
 NOT ALL POSSIBLE CONFIGURATIONS SHOWN ON THIS DRAWING ARE AVAILABLE AS STANDARD PRODUCTS.
 PLEASE CHECK WITH TYCO ELECTRONICS TO CONFIRM AVAILABILITY.

MTC100-BXX-PXX-XXX
 MODIFICATION NUMBER. REFER TO APPLICABLE MOD DESCRIPTION SHEET.
 "BLANK WHEN NOT APPLICABLE"

- 1=LONG TAIL
- 2=SHORT TAIL
- 3=90° IN "B" DIRECTION

- 2=NICKEL PLATE
- 3=CADMIUM OVER NICKEL PLATE

- 1=1 INCH
- 2=2 INCH

- F=FLANGED WITH STANDARD PANEL GASKET
- S=FLANGED/SHEilded WITH EME PANEL GASKET
- J=FLANGELESS
- Y=SPECIALS: REFER TO INDIVIDUAL SPECIFICATION CONTROL DRAWINGS FOR DESCRIPTIONS

2. A BOX MOUNT RECEPTACLE MATES WITH A MTC PLUG CONTAINING SOCKET INSERTS.
 REFER TO APPLICABLE TYCO ELECTRONICS SPECIFICATION CONTROL DRAWING FOR DETAILS.

△ FOR KEYING INFORMATION, SEE TYCO ELECTRONICS DRAWING D-659-0080.

△ THESE ITEMS ARE SUPPLIED UNASSEMBLED.

△ DIMENSION SHOWN IS WITH MATED PLUG CONNECTOR: a. WITH CABLE CLAMP
 b. WITHOUT CABLE CLAMP AND WITHOUT EARS

△ THIS BOX MOUNT RECEPTACLE IS REAR PANEL MOUNTED BY REMOVING AS MANY PANEL WASHERS AS REQUIRED TO ACCOMMODATE THE THICKNESS OF THE PANEL BEING USED. SEE SHEET 2, TABLE 2, AND SHEET 3, FIGURE 2.

7. FOR FRONT PANEL MOUNTING OF A FLANGELESS CONNECTOR, USE HARDWARE KIT CHA-0038-00 AND REFER TO THAT SPECIFICATION CONTROL DRAWING FOR APPLICATION DETAILS.

△ WIRE WRAPPABLE POST DESIGNED BY STANDARD WIRE WRAP SPECIFICATION.

△ WHEN MOUNTING FLANGELESS CONNECTORS ADJACENT TO ONE ANOTHER AND USING THE 400 MINIMUM CENTERLINE LOCATION, THERE WILL BE NO WEB BETWEEN PANEL CUT-OUTS. SEE SHEET 3, FIGURE 2 FOR DETAILS.

△ KIT NUMBER CHA-0046 IS AVAILABLE FOR MOUNTING A CONNECTOR TO A PRINTED CIRCUIT BOARD. SEE SHEET 3, FIGURE 3 FOR HOLE PATTERN RECOMMENDATION.

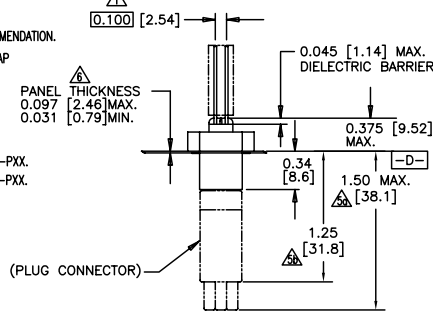
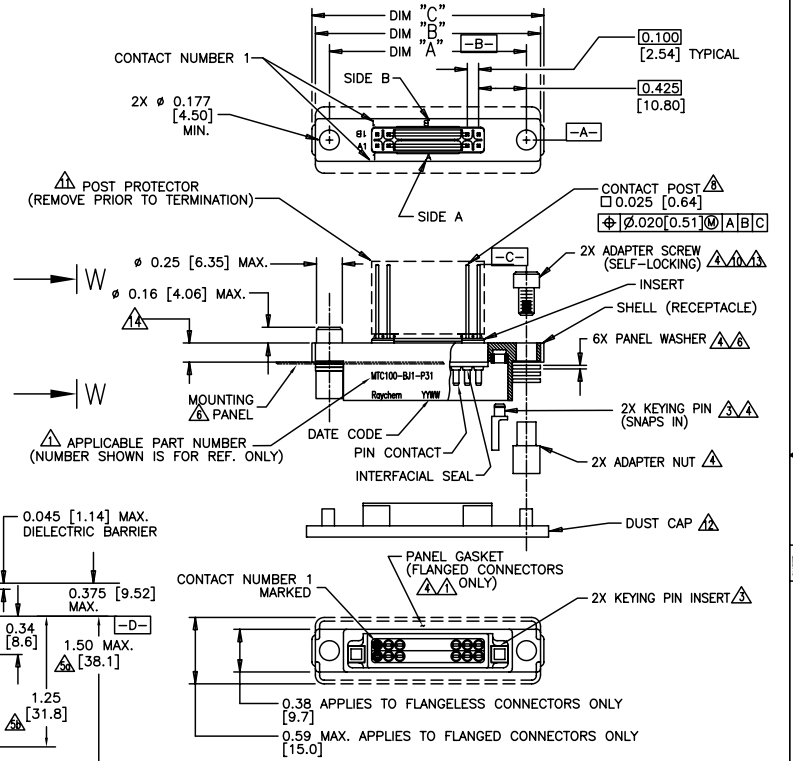
△ SEE SHEET 3, TABLE 3, FOR WEIGHTS. WEIGHTS SHOWN ARE WITHOUT DUST CAP AND WITHOUT POST PROTECTOR.

△ DUST CAP SUPPLIED WITH ASSEMBLY.

△ TORQUE MOUNTING HARDWARE TO: 14-16 IN.-LBS.

△ THE FLANGE THICKNESS IS DIFFERENT ACCORDING TO SHELL STYLE AND SIZE.
 THE THICKNESS: 0.170 [4.32] FOR P/N MTC100-BF2-PXX AND MTC100-BS2-PXX.
 THE THICKNESS: 0.160 [4.06] FOR P/N MTC100-BX1-PXX AND MTC100-BJ2-PXX.

REVISIONS			
LTR	DESCRIPTION	DATE	APPROVED
G	REVISED PER ECN T-18624	10/12/93	R.LOVATO
H	REDRAWN ON CAD PER ECN T-22750	04/29/99	J.VALENTA
J	PER ECO-09-028512	Dec/29/09	M.HIGGY



VIEW W-W

© 2009 Tyco Electronics Corporation. All rights reserved

CUSTOMER DRAWING

THIS DRAWING AND THE INFORMATION SET FORTH HEREON ARE THE PROPERTY OF TYCO ELECTRONICS. PUBLICATION, DUPLICATION, DISCLOSURE OR USE FOR ANY PURPOSE OTHER THAN THE CUSTOMER'S DIRECT NEEDS FOR THE APPLICATION CONCERNED, ARE PROHIBITED. TYCO ELECTRONICS RESERVES THE RIGHT TO AMEND THE DRAWING AT ANY TIME. TYCO ELECTRONIC'S OBLIGATIONS SHALL ONLY BE AS SET FORTH IN TYCO ELECTRONIC'S TERMS AND CONDITIONS OF SALE OF THIS PRODUCT. USERS SHOULD INDEPENDENTLY EVALUATE THE SUITABILITY OF THIS PRODUCT FOR THEIR APPLICATION.	UNLESS OTHERWISE SPECIFIED DIMENSIONS ARE IN INCHES. METRIC DIMENSIONS ARE IN BRACKETS.	RE-DRAWN	J.VALENTA	04/20/99	 Tyco Electronics <small>300 CONVENT DRIVE WAREHOUSING, CA 94085 U.S.A.</small>	Raychem Interconnect	
	DECIMALS .XXX ± .005 {0.13mm} .XX ± .01 {0.25mm}	CHECKED					TITLE CONNECTOR, RECEPTACLE, BOX MOUNT, .025 SQ., TERMINATION POST, MTC100 SERIES
	ANGLES .X ±	APPROVED	M.HIGGY	04/23/99			
	WEIGHT	THIRD ANGLE PROJECTION	CAD NAME	MTC100-BXX-PXX-XXX			SCALE: NONE

3

2

1

DRAWING NO. MTC100-BXX-PXX-XXX SHEET 1

A

D

C

B

A

1

2

3

4 3 2 1

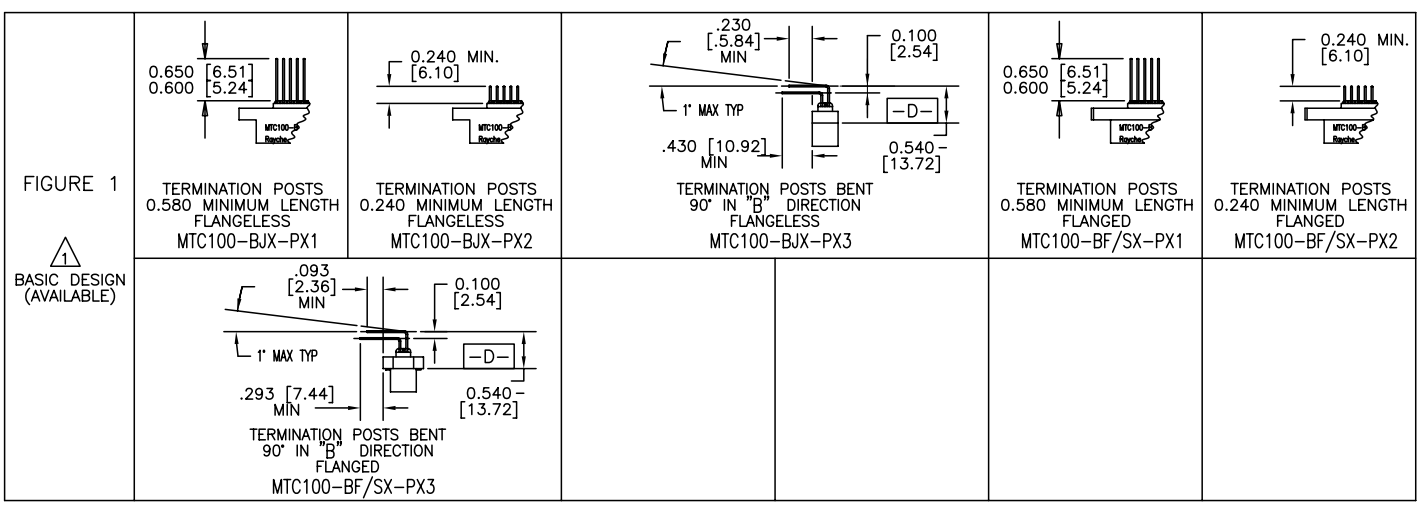


TABLE 1

CONNECTOR SIZE	"A"	"B"	"C"	"X"	"Y"	"Z" (MIN)	
1 INCH	FLANGELESS	1.750 [44.45]	2.00 [50.8]	X	1.750 [44.45]	1.520 [38.61]	0.400 [10.16]
	FLANGED	1.750 [44.45]	X	2.06 [52.3]	1.750 [44.45]	1.520 [38.61]	0.600 [15.24]
2 INCH	FLANGELESS	2.750 [69.85]	3.00 [76.2]	X	2.750 [69.85]	2.520 [64.00]	0.400 [10.16]
	FLANGED	2.750 [69.85]	X	3.06 [77.7]	2.750 [69.85]	2.520 [64.00]	0.600 [15.24]

TABLE 2

PANEL THICKNESS	NUMBER OF PANEL WASHERS FOR EACH FASTENER
0.031/0.036 [0.8]/[0.9]	2
0.062/0.067 [1.5]/[1.7]	1
0.93/0.097 [2.3]/[2.4]	0

CUSTOMER DRAWING

SIZE C	CAGE CODE: 06090	DWG. NO. MTC100-BXX-PXX-XXX	REV. J
OLD NAME: MTC100-BXX-PXX-XXX		SCALE: NONE	SHEET 2 OF 3

4 3 2 1

DRAWING NO. MTC100-BXX-PXX-XXX SHEET 2

SPECIFICATIONS:

MATERIALS:

A. SHELL	ALUMINUM ALLOY PER ASTM B85 / B85M
B. ADAPTER SCREW	STAINLESS STEEL PER SAE-AMS-QQ-S-763, 300 SERIES
C. ADAPTER NUT	STAINLESS STEEL PER SAE-AMS-QQ-S-763, 300 SERIES
D. STANDARD PANEL GASKET EMI PANEL GASKET	SILICONE ELASTOMER PER MIL-STD-25988 CONDUCTIVE ELASTOMER PER MIL-DTL-83528 TYPE C, GRAY.
E. INSERT	HIGH GRADE POLYARYLENE THERMOPLASTIC, MOLDED
F. INTERFACIAL SEAL	FLUOROSILICONE PER MIL-DTL-25988
G. KEYING PIN	HIGH GRADE POLYARYLENE THERMOPLASTIC, MOLDED
H. PIN CONTACT	COPPER ALLOY PER ASTM B139 / B139M
I. PANEL WASHER	STAINLESS STEEL PER SAE-AMS-QQ-S-763 OR ASTM B240, 300 SERIES
J. KEYING PIN INSERT	HIGH GRADE POLYARYLENE THERMOPLASTIC, MOLDED

FINISH:

APPLIES TO NICKEL
PLATED CONNECTORS
(STANDARD PLATING)

APPLIES TO CADMIUM
PLATED CONNECTORS

A. SHELL	NICKEL PLATED PER SAE-AMS-C-26074 CLASS 3, GRADE B	CADMIUM PLATED PER SAE-AMS-QQ-P-416 OVER NICKEL UNDERPLATE
B. ADAPTER SCREW	PASSIVATED PER SAE-AMS-QQ-P-35	CADMIUM PLATED PER SAE-AMS-QQ-P-416
C. ADAPTER NUT	PASSIVATED PER SAE-AMS-QQ-P-35	CADMIUM PLATED PER SAE-AMS-QQ-P-416
D. PANEL WASHER	PASSIVATED PER SAE-AMS-QQ-P-35	CADMIUM PLATED PER SAE-AMS-QQ-P-416
E. PIN CONTACT	GOLD PLATED PER ASTM B488 TYPE 2, GRADE C	CADMIUM PLATED PER SAE-AMS-QQ-P-416

DESIGN AND CONSTRUCTION:

THE CONNECTORS SPECIFIED HEREIN ARE PANEL MOUNTED RECEPTACLES WITH FIXED (NON-REMOVABLE) PIN INSERTS AND CONTACTS. THE CONNECTOR IS WITHOUT PROVISIONS FOR CABLE CLAMPS OR TERMINATION SEALS.

PERFORMANCE:

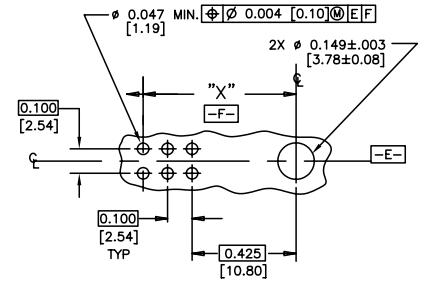
THESE CONNECTORS MEET THE APPLICABLE REQUIREMENTS OF TYCO ELECTRONICS SPECIFICATION C-6111.

PERFORMANCE; SHELL BE IN ACCORDANCE WITH C-6111, EXCEPT AS FOLLOWS

HUMIDITY	} THE CONNECTOR TERMINATION END MUST BE SUITABLY PROTECTED FOR TESTING OR APPLICATION IN ANY OF THESE ENVIRONMENTS.
ALTITUDE IMMERSION	
ALTITUDE - LOW TEMPERATURE	
FLUID IMMERSION	

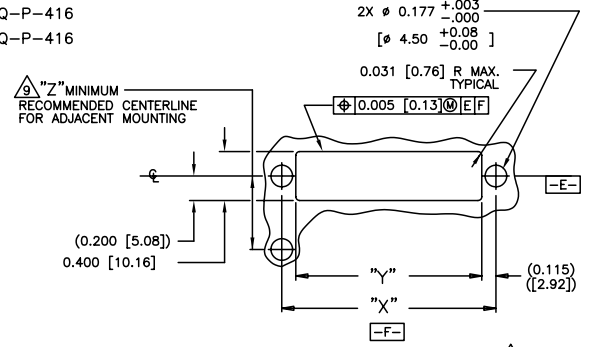
PART NUMBER	WEIGHT MAXIMUM GRAMS
MTC100-BF1-P32	23.0
MTC100-BF2-P32	33.2

THE FOLLOWING TABLE CONSISTS OF WEIGHTS FOR THESE SPECIFIC PART NUMBERS



RECOMMENDED HOLE PATTERN AND SIZE FOR PRINTED CIRCUIT BOARDS

FIGURE 3



RECOMMENDED PANEL CUT-OUT

FIGURE 2

CUSTOMER DRAWING

SIZE C	CAGE CODE 06090	DWG. NO. MTC100-BXX-PXX-XXX	REV J
SCALE: NONE		SHEET 3 OF 3	

DWG. NO. MTC100-BXX-PXX-XXX SHEET 3