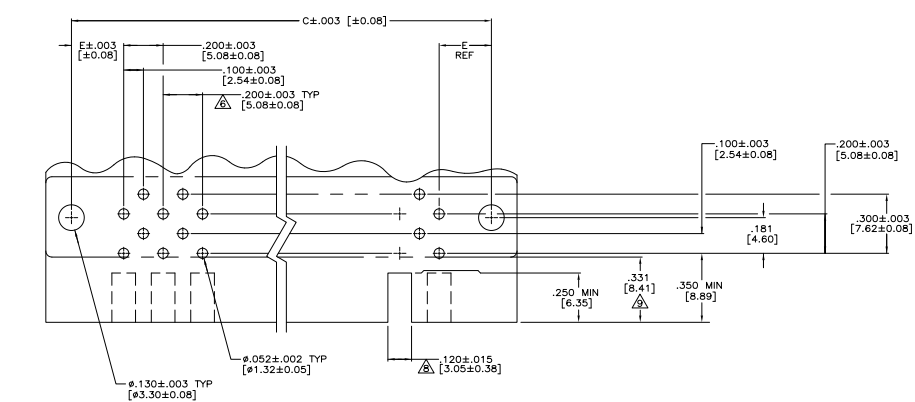
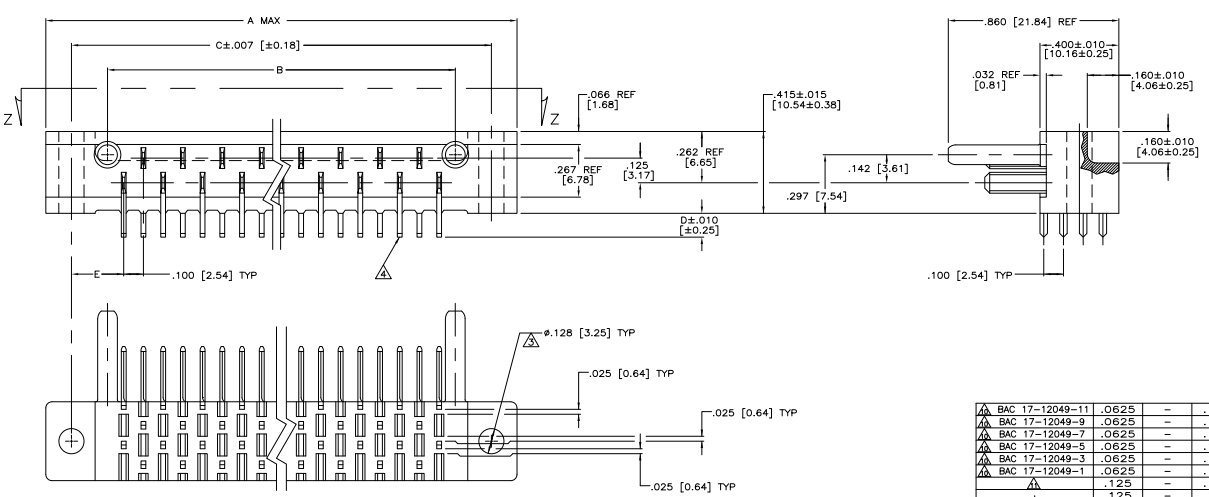


THIS DRAWING IS UNAPPROVED FOR PRODUCTION ALL RIGHTS RESERVED

REV	DATE	BY	CHK	DESCRIPTION	DATE	BY	CHK
DF	HO	NT		REVISED PER EDD-11-005030	11MAR11	RK	HMR



RECOMMENDED P.C. BOARD LAYOUT

MARKING	P.C. BO. THICKNESS	E	D	C	B	A	NO. OF CONT.	PART NUMBER	
▲	BAC 17-12049-11	.0625	-.120	-	4.764	5.070	47	4-582843-5	
▲	BAC 17-12049-9	.0625	-.120	-	4.164	4.470	41	4-582843-4	
▲	BAC 17-12049-7	.0625	-.120	-	3.564	3.870	35	4-582843-3	
▲	BAC 17-12049-5	.0625	-.120	-	2.964	3.270	29	4-582843-2	
▲	BAC 17-12049-3	.0625	-.120	-	2.364	2.670	23	4-582843-1	
▲	BAC 17-12049-1	.0625	-.120	-	1.764	2.070	17	4-582843-0	
▲		.125	-.183	-	4.764	5.070	47	3-582843-6	
▲		.125	-.183	-	4.164	4.470	41	3-582843-5	
▲		.125	-.183	-	3.564	3.870	35	3-582843-4	
▲		.125	-.183	-	2.964	3.270	29	3-582843-3	
▲		.125	-.183	-	2.364	2.670	23	3-582843-2	
▲		.125	-.183	-	1.764	2.070	17	3-582843-1	
▲		.125	.381	.183	5.363	4.764	5.623	47	3-582843-0
▲		.125	.265	.183	4.530	4.164	4.790	41	2-582843-9
▲		.125	.265	.183	3.930	3.564	4.190	35	2-582843-8
▲		.125	.265	.183	3.330	2.964	3.590	29	2-582843-7
▲		.125	.265	.183	2.730	2.364	2.990	23	2-582843-6
▲		.125	.265	.183	2.130	1.764	2.390	17	2-582843-5
▲		.0937	-.152	-	4.764	5.070	47	2-582843-4	
▲		.0937	-.152	-	4.164	4.470	41	2-582843-3	
▲		.0937	-.152	-	3.564	3.870	35	2-582843-2	
▲		.0937	-.152	-	2.964	3.270	29	2-582843-1	
▲		.0937	-.152	-	2.364	2.670	23	2-582843-0	
▲		.0937	.381	.152	5.363	4.764	5.623	47	1-582843-9
▲		.0937	.265	.152	4.530	4.164	4.790	41	1-582843-8
▲		.0937	.265	.152	3.930	3.564	4.190	35	1-582843-7
▲		.0937	.265	.152	3.330	2.964	3.590	29	1-582843-6
▲		.0937	.265	.152	2.730	2.364	2.990	23	1-582843-5
▲		.0937	.265	.152	2.130	1.764	2.390	17	1-582843-4
▲		.0625	-.120	-	4.764	5.070	47	1-582843-3	
▲		.0625	-.120	-	4.164	4.470	41	1-582843-2	
▲		.0625	-.120	-	3.564	3.870	35	1-582843-1	
▲		.0625	-.120	-	2.964	3.270	29	1-582843-0	
▲		.0625	-.120	-	2.364	2.670	23	582843-9	
▲		.0625	-.120	-	1.764	2.070	17	582843-8	
▲		.0625	.381	.120	5.363	4.764	5.623	47	582843-7
▲		.0625	.265	.120	4.530	4.164	4.790	41	582843-6
▲		.0625	.265	.120	3.930	3.564	4.190	35	582843-5
▲		.0625	.265	.120	3.330	2.964	3.590	29	582843-4
▲		.0625	.265	.120	2.730	2.364	2.990	23	582843-3
▲		.0625	.265	.120	2.130	1.764	2.390	17	582843-2
▲		.0937	.265	.152	2.730	2.364	2.990	23	582843-1

THIS DRAWING IS A CONTROLLED DOCUMENT. REV. 02-2011

TE Connectivity

ASSEMBLY, AMP BLADE TAB HOUSING

DATE: 02-2011

REV: 1

SIZE: A1

QTY: 100779

QTY: 582843

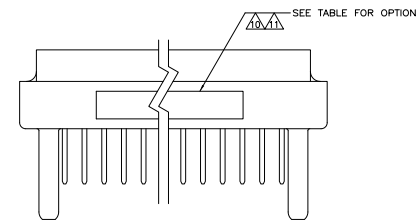
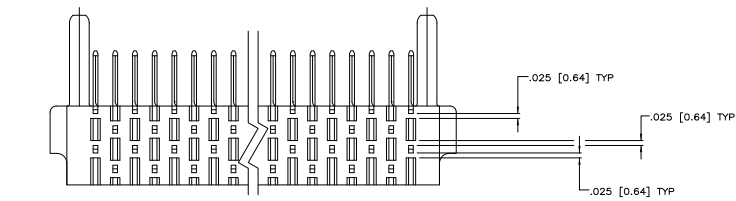
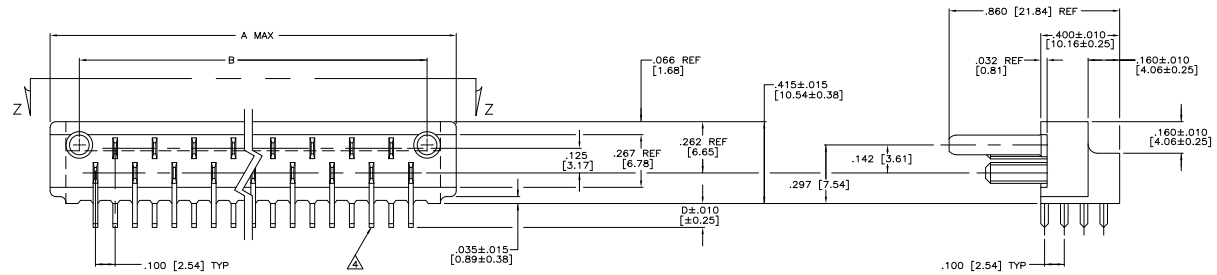
REV: 4.1

SHEET: 1

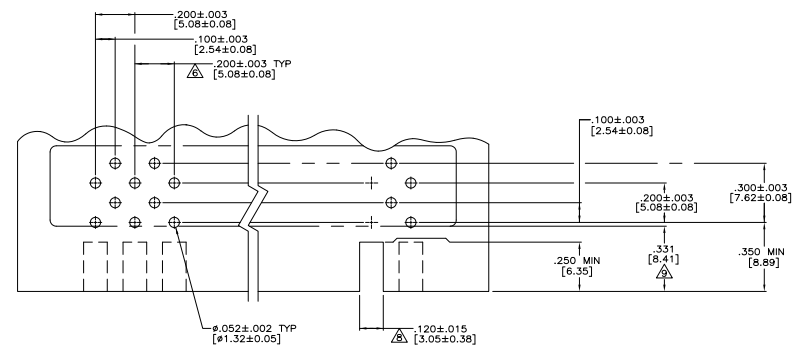
TOTAL SHEETS: 2

THIS DRAWING IS UNPUBLISHED
 ALL RIGHTS RESERVED

REV	DATE	DESCRIPTION	BY	CHK	APP
DF	HO				



VIEW Z-Z



RECOMMENDED P.C. BOARD LAYOUT

- TAB-HOUSING ASSEMBLY MATES WITH TE CONNECTIVITY P/N 3-582151 SERIES.
 - BLADE CENTER LINE TO BE MEASURED FROM THE CENTER LINE FORMED BY THE ALIGNMENT PINS & AS LONG AS THE BLADES FALL WITHIN TOLERANCES INDICATED, THE ALLOWABLE WARPAGE IS INDEPENDENT OF THE BLADES & BECOMES A MEASUREMENT OF THE OUTSIDE SURFACE OF THE TAB-HOUSING & DOES NOT EFFECT THE MATING OF THIS TAB-HOUSING WITH 582151.
- △ MOUNTING HOLES.
 - △ POST TO BE SOLDER DIPPED. CONN. MUST MEET REQUIREMENTS OF MIL-STD-202 METHOD 208.
 - △ CONTACT MATL.; GILDING METAL. GOLD OVER NICKEL.
 - △ TOLERANCE NON CUMULATIVE.
 - △ TAB-HOUSING MATL.; DIALYL PHTHALATE, GLASS FILLED PER MIL-M-14, TYPE S.D.G.-F. COLOR: GREEN.
 - △ CUT OUT FOR KEYING BOSS, LOCATED WHERE REQD. (OPTIONAL) FROM EDGE OF P.C. BOARD TO FACE OF TAB-HOUSING.
 - △ TE CONNECTIVITY P/N NOT TO BE MARKED ON PART. CAGE CODE, #00779, DATE CODE, & CUSTOMER P/N TO BE MARKED ON PART, SEE TABLE.
 - △ TE CONNECTIVITY PART NUMBER, DATE CODE AND MILITARY PART NUMBER .062 HIGH, MARKED THIS AREA AND ALL EVEN NUMBERED CONTACTS MARKED THIS AREA.

THIS DRAWING IS A CONTROLLED DOCUMENT.		BY: ALEXANDER 02-JAN-83	DATE: 23-NOV-82	REV: 1	DESCRIPTION: ASSEMBLY, AMP BLADE TAB HOUSING
DESIGNED BY: ALEXANDER	DRAWN BY: ALEXANDER	CHECKED BY: ALEXANDER	DATE: 23-NOV-82	REV: 1	DESCRIPTION: ASSEMBLY, AMP BLADE TAB HOUSING
APPROVED BY: ALEXANDER	DATE: 23-NOV-82	REV: 1	DESCRIPTION: ASSEMBLY, AMP BLADE TAB HOUSING	SIZE: A1	DATE: 00779
CUSTOMER DRAWING		DATE: 00779	REV: 1	DESCRIPTION: ASSEMBLY, AMP BLADE TAB HOUSING	SIZE: A1