

4

3

2

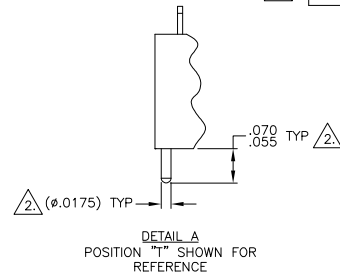
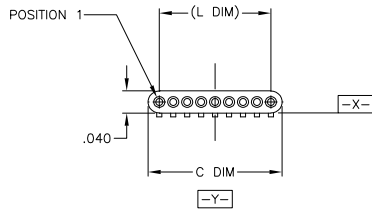
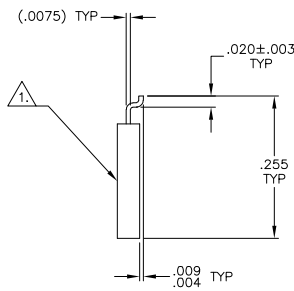
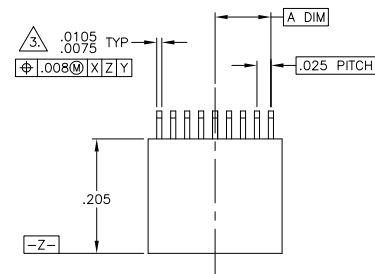
1

THIS DRAWING IS UNPUBLISHED. RELEASED FOR PUBLICATION  
 © COPYRIGHT BY TYCO ELECTRONICS CORPORATION. ALL RIGHTS RESERVED.

LOC	DIST	REVISIONS				
DF	DO	P	LR	DATE	MIN	APD
		B		UPDATE PER DH2Y-0026-04	01-23-04	JDM/MKS

SIZE	A DIM	C DIM	(L DIM)
04	.0375	.115	(.075)
09	.100	.240	(.200)
15	.175	.390	(.350)

25	.300	.640	(.600)
37	.450	.940	(.900)
51	.625	1.290	(1.250)



- T ●○○○○○○○○ POSITION 1
- U ●●○○○○○○○○ POSITION 2
- V ○●○○○○○○○○ POSITION 3
- W ●○○○○○○●● POSITION 1, AND SECOND TO LAST POSITION
- Y ●○○○○○○○● POSITION 1, AND THIRD TO LAST POSITION
- Z ●○○○○○○○● POSITION 2, AND THIRD TO LAST POSITION

- 1. INSULATOR MATERIAL: RYTON (POLYPHENYLENE SULFIDE) PER MIL-M-24519 OR LCP PER ASTM D5138
- 2. OPTIONAL POLARIZATION GUIDE POST SHOWN FOR REFERENCE ONLY. IF GUIDE POST(S) ARE REQUIRED, THE LOCATION MUST BE SPECIFIED IN THE NANONICS PART NUMBER. GUIDE POST MATERIAL IS 303 STAINLESS STEEL, PASSIVATED PER SAE-AMS-QQ-P-35.
- 3. SMT LEADS ARE BeCu, GOLD PLATE PER MIL-G-45204 OVER NICKEL PLATE PER SAE-AMS-QQ-N-290
- 4. TERMINATION CODE: H2
- 5. WHEN ORDERING THESE SIZES, FIRST CONSULT TYCO ELECTRONICS/NANONICS FOR ADDITIONAL INFORMATION.
- 6. THIS DRAWING PREVIOUSLY IDENTIFIED AS NANONICS N10138/040

2. POLARIZING GUIDE POST "PGP" POSITIONS, SEE DETAIL A

THIS DRAWING IS A CONTROLLED DOCUMENT.		DWG. C. SCHOLL 08-06-03 CHK. M. STORRY 08-06-03 APPR. D. MORALES 01-27-04 PRODUCT SPEC. NAME APPLICATION SPEC. HEIGHT FINISH	Tyco Electronics Corporation Harrisburg, PA 17105 <b>PLUG ASSEMBLY, UNSHROUDED STRIP, HORIZONTAL SMT, GOLD PLATED LEADS, PLASTIC</b>	SIZE: A2 QMG CODE: 00779 DRAWING NO: C=1589811	RESTRICTED TO: - SCALE: 8:1 SHEET: 1 OF 2 REV: B
DIMENSIONS: INCHES	DIMENSIONS: INCHES 0 PLC ± .005 1 PLC ± .005 2 PLC ± .010 3 PLC ± .005 4 PLC ± .005 ANGLES ± .1°	MATERIAL: SEE NOTES FINISH: SEE NOTES	CUSTOMER DRAWING		

AMP 1471-9 REV 31MM2000

1589811

A

B

C

D

B

A

B

4

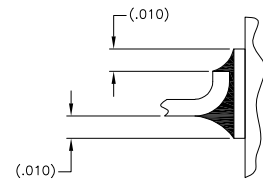
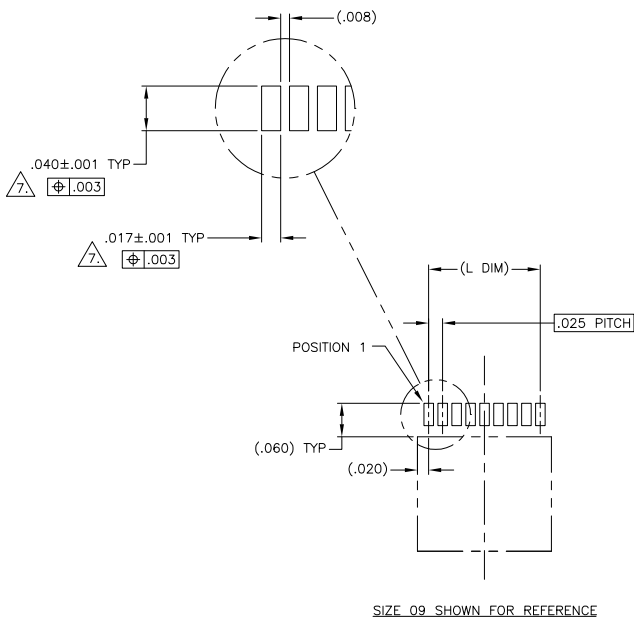
3

2

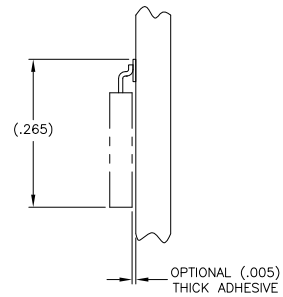
1

THIS DRAWING IS UNPUBLISHED. RELEASED FOR PUBLICATION  
 © COPYRIGHT BY TYCO ELECTRONICS CORPORATION. ALL RIGHTS RESERVED.

LOC		DIST		REVISIONS			
DF	DO	P	LTR	DESCRIPTION	DATE	MIN	APVD
		B		UPDATE PER DH2Y-0026-04	08-05-03	JDM	MKS



TYPICAL FOOT PLACEMENT ON SOLDER PAD



OPTIONAL (.005) THICK ADHESIVE

TYPICAL PCB LAYOUT

POSITIONAL TOLERANCES FOR BASIC DIMENSIONED FEATURES ARE RELATIVE TO FIDUCIALS OR SOME SIMILAR DATUM REFERENCE DEFINED BY THE PCB DESIGNER.

THIS DRAWING IS A CONTROLLED DOCUMENT.		DR: C. SCHOLL 08-06-03	Tyco Electronics Corporation	
		OK: M. STORRY 08-06-03	Harrisburg, PA 17105	
DIMENSIONS: INCHES		APD: D. MORALES 01-27-04	Tyco Electronics	
TOLERANCES UNLESS OTHERWISE SPECIFIED:		NAME: D. MORALES	PLUG ASSEMBLY, UNSHROUDED STRIP, HORIZONTAL SMT, GOLD PLATED LEADS, PLASTIC	
0 PLC ± .010		PRODUCT SPEC: -	SIZE: A2	CHG CODE: 00779
1 PLC ± .005		APPLICATION SPEC: -	DRAWING NO: C=1589811	
2 PLC ± .005		HEIGHT: -	RESTRICTED TO: -	
3 PLC ± .005		FINISH: -	CUSTOMER DRAWING	
4 PLC ± .005			SCALE: 8:1	
ANGLES ± .1°			SHEET 2 OF 2	
MATERIAL: -			REV B	

AMP 1471-9 REV 31MM2000

1589811

A