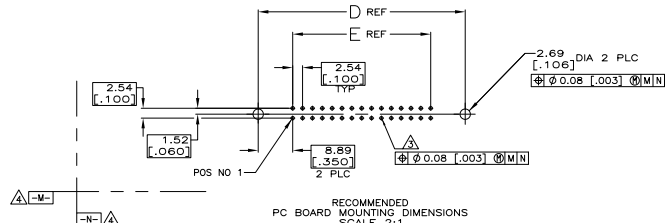
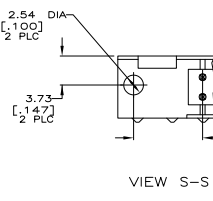
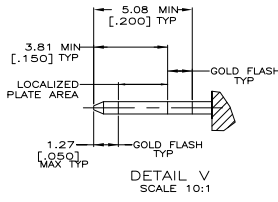
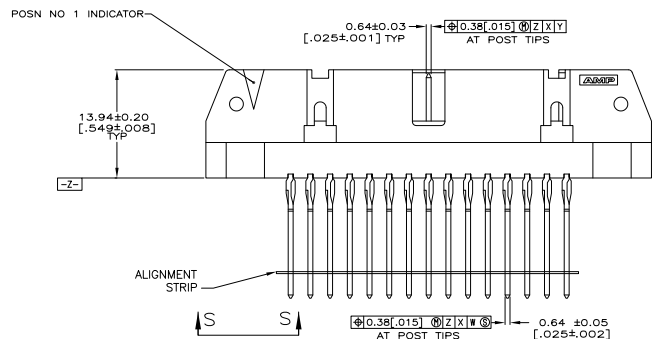
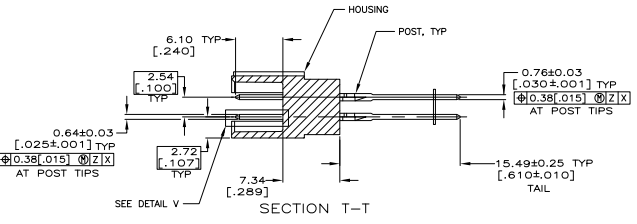
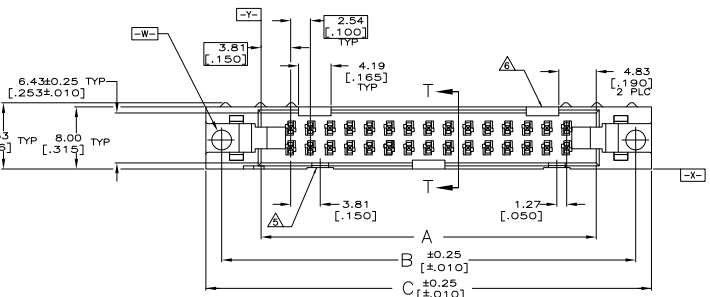


THIS DRAWING IS UNCLASSIFIED
 UNLESS INDICATED OTHERWISE BY A CROSS REFERENCE TO ANOTHER DRAWING. ANY INFORMATION MUST BE REPRODUCED AS IS.
 © 2004 TTI ELECTRONICS CORPORATION. ALL INFORMATION MUST BE REPRODUCED AS IS.

REVISONS			
REV	DESCRIPTION	DATE	BY
00	REVISED PER ECO-08-00046	28MAR04	JDF/SLB



- △ HOUSING: GLASS FILLED NYLON OR POLYESTER, UL94V-0 RATED, COLOR BLACK. POSTS: PHOSPHOR BRONZE. ALIMENT STRIP: ARMD PAPER.
- △ POSTS: GOLD FLASH OVER PALLADIUM-NICKEL PLATE, 0.76μm[0.00030] MIN TOTAL ON THE LOCALIZED PLATE AREA, 2.54μm[0.00100] MIN TIN PLATE ON THE TAIL, 1.27μm[0.00050] MIN NICKEL UNDERPLATE ON THE ENTIRE POST.
- OR— 0.76μm[0.00030] MIN GOLD PLATE ON THE LOCALIZED PLATE AREA, 2.54μm[0.00100] MIN TIN PLATE ON THE TAIL, 1.27μm[0.00050] MIN NICKEL UNDERPLATE ON THE ENTIRE POST.
- △ REFER TO APPLICATION SPECIFICATION 114-40020 FOR HOLE SIZE AND FINISH RECOMMENDATIONS.
- △ DATUMS —M— & —N— TO BE ESTABLISHED BY CUSTOMER.
- △ NO SLOT FOR SNAP-IN POLARIZER ON THIS END FOR 10 AND 14 POSITION HEADERS.
- △ NO SLOT ON THIS END FOR 10 POSITION HEADERS.

OBSOLETE	78.74	96.52	100.58	96.52	86.38	64	1-1658695-0
	[3.100]	[3.800]	[3.960]	[3.800]	[3.400]		
	73.66	91.44	95.50	91.44	81.28	60	1658695-9
	[2.900]	[3.600]	[3.760]	[3.600]	[3.200]		
	60.96	78.74	82.80	78.74	68.58	50	1658695-8
	[2.400]	[3.100]	[3.260]	[3.100]	[2.700]		
	48.26	66.04	70.10	66.04	55.58	40	1658695-7
	[1.900]	[2.600]	[2.760]	[2.600]	[2.200]		
	30.48	48.26	52.32	48.26	38.10	26	1658695-6
	[1.200]	[1.900]	[2.060]	[1.900]	[1.500]		
	22.86	40.64	44.70	40.64	30.48	20	1658695-5
	[.900]	[1.600]	[1.760]	[1.600]	[1.200]		
	17.78	35.56	38.10	35.56	25.40	16	1658695-4
	[.700]	[1.400]	[1.560]	[1.400]	[1.000]		
	15.24	33.02	37.08	33.02	22.86	14	1658695-3
	[.600]	[1.300]	[1.460]	[1.300]	[.900]		
	10.16	27.94	32.00	27.94	17.78	10	1658695-2
	[.400]	[1.100]	[1.260]	[1.100]	[.700]		
	40.64	58.42	62.48	58.42	48.26	34	1658695-1
	[1.600]	[2.300]	[2.460]	[2.300]	[1.900]		

THIS DRAWING IS A CONTROLLED DOCUMENT:		DATE	BY	APP'D	CHK'D	APP'D	CHK'D
DESIGNED	BY	114-40020	JDF				
DRAWN	BY	114-40020	JDF				
CHECKED	BY						
APPROVED	BY						

NO SLOT	NO SLOT FOR SNAP-IN POLARIZER ON THIS END FOR 10 AND 14 POSITION HEADERS						
CUSTOMER DRAWING		DATE	11/2/04	REV	1	OF	1