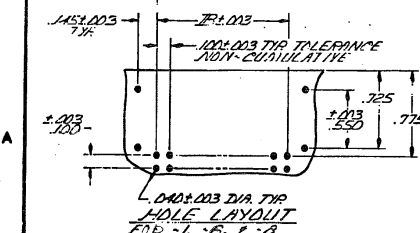
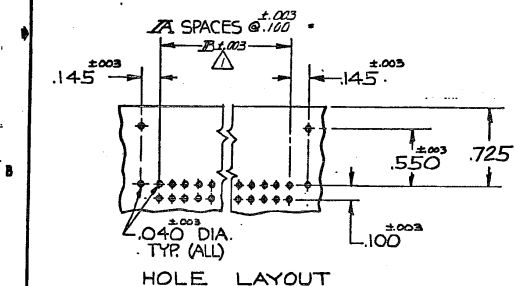
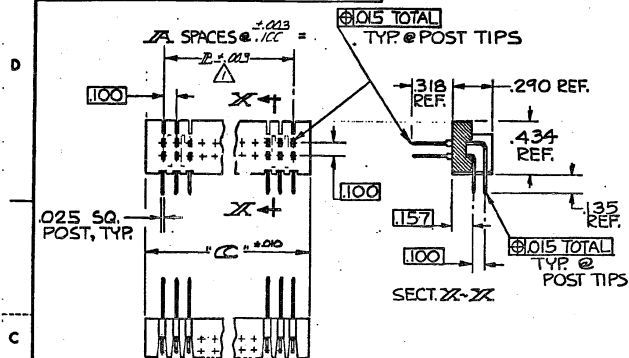


DRAWING MADE IN THIRD ANGLE PROJECTION

© COPYRIGHT 1981, 1982 BY AMP INCORPORATED, HARRISBURG, PA. ALL INTERNATIONAL RIGHTS RESERVED. AMP INCORPORATED PRODUCTS COVERED BY U. S. AND FOREIGN PATENTS AND/OR PATENTS PENDING.

REV. NO.		DESCRIPTION	DATE APPROVED
J	✓	REDRAWN PER 0010-0226-96	3-78 E.B.M.
K	✓	REV PER 0310-0389-97	0-97 L.B.M.
K1		REVISED PER ECO-10-000445	028699 HMR



- △ TOL. NON-CUMULATIVE.
- △ OBSOLETE PARTS: OBSOLETE CIS STREAMLINING PER D.RENAUD/D.SINISI

	102791-7	1.830	1.800	16	34	1-102792-1	
OBSELETE	102791-5	2.120	2.247	29	67	1-102792-0	
OBSELETE	102791-1	1.420	1.207	12	26		
OBSELETE	102791-2	5.30	3.27	3	A		
2	102791-3	3.20	2.80	7	16	102792-7	
	102791-1	4.30	2.80	2	6	102792-6	
△	OBSELETE	1-102791-0	1.130	.900	9	20	102792-5
	102791-B	2.630	2.400	24	30	102792-4	
OBSELETE	102791-6	2.130	1.900	19	40	102792-3	
OBSELETE	102791-4	1.030	.800	8	18	102792-2	
	102791-2	.630	.400	4	10	102792-1	
	USED WITH PART NUMBER	C DIM	B DIM	A SPACES	NUMBER OF POSITIONS	PART NUMBER	

UNLESS OTHERWISE SPECIFIED DIMENSIONS ARE IN INCHES. TOLERANCES ON DECIMALS ANGLES	CONTRACT NO	AMP INCORPORATED Harrisburg, Pa.	
	DR	NAME ASSEMBLY, HEADER, AMPMODU, DOUBLE ROW, .100 @ RIGHT ANGLE	
MATERIAL 105-PLATE RECURRENT THERMOPLASTIC COLOR-BLACK. POSTS- COPPER ALLOY	APPD	SIZE	CODE IDENT NO
FINISH POSTS- 00039 GALCS IN CONTACT AREA. GOLD FLASH ON REMAINDER OF POST. 00050 NICKEL UNDERPLATE	DESIGN APPD	C	00779
	OTHER APPD	SCALE	DRAWING NO
		2-1	102792
			SHEET 1 OF 1

CUSTOMER DRAWING

AMP 1471-6 REV 12-78

102792

A