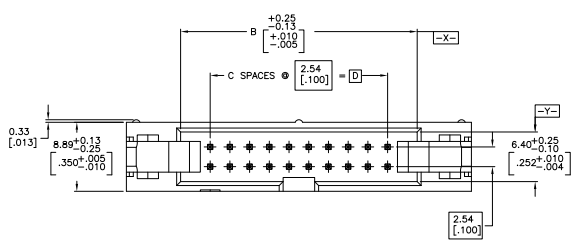
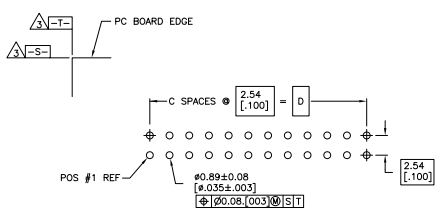
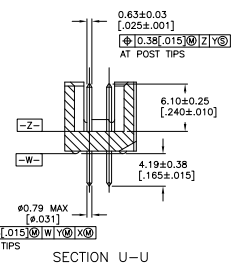
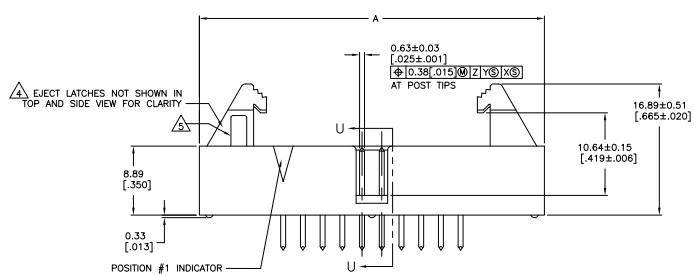


THIS DRAWING IS UNPUBLISHED
 ALL RIGHTS RESERVED
 © 2005 TYCO ELECTRONICS CORPORATION

REV	DATE	DESCRIPTION	BY	CHK	APP
00					
GP					



- △ HOUSING & EJECT LATCHES: PBT, UL94V-0, COLOR BLUE. POSTS: PHOSPHOR BRONZE.
- △ POSTS: 0.00076[0.00030] MIN GOLD ON MATING AREA, 0.00254[0.00100] MIN TIN ON SOLDER END, ALL OVER 0.00127[0.00050] MIN NICKEL ON ENTIRE POST.
- △ DATUMS S & T TO BE ESTABLISHED BY CUSTOMER.
- △ SHORT EJECT LATCHES FOR MATING IDC/AMP-LATCH STYLE RECEPTACLES WITHOUT A STRAIN RELIEF.
- △ MANUFACTURER'S LOGO TO BE LOCATED IN APPROXIMATE AREA SHOWN.



RECOMMENDED PC BOARD LAYOUT
 (VIEWED FROM CONNECTOR SIDE)

OBSCLETE	NO. OF POS	NO. OF POS	NO. OF POS	NO. OF POS	PART NUMBER
68.58 [2.700]	27	76.20 [3.000]	90.17 [3.550]	56	1-1761687-8
60.96 [2.400]	24	68.58 [2.700]	82.55 [3.250]	50	1-1761687-5
48.26 [1.900]	19	55.88 [2.200]	69.85 [2.750]	40	1-1761687-3
40.64 [1.600]	16	48.26 [1.900]	62.23 [2.450]	34	1-1761687-1
30.48 [1.200]	12	38.10 [1.500]	52.07 [2.050]	26	1761687-9
22.86 [0.900]	9	30.48 [1.200]	44.45 [1.750]	20	1761687-7
10.16 [0.400]	4	17.78 [0.700]	31.75 [1.250]	10	1761687-3

COPYRIGHT 2005
TYCO ELECTRONICS CORP
ALL RIGHTS RESERVED

THIS DRAWING IS A CONTROLLED DOCUMENT. **TYCO ELECTRONICS CORPORATION** Harrisburg, PA 17105-3608

DESIGNED BY	REVISIONS	DATE	BY
APPROVED BY	REVISED PER EDD-10-011568		

SIZE: A1 00779 ©=1761687

CUSTOMER DRAWING