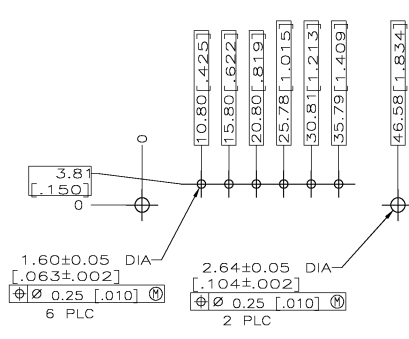
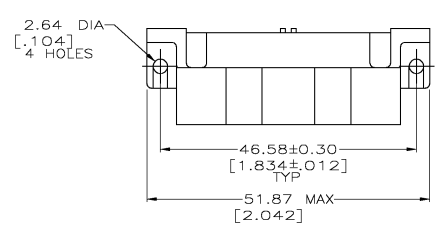


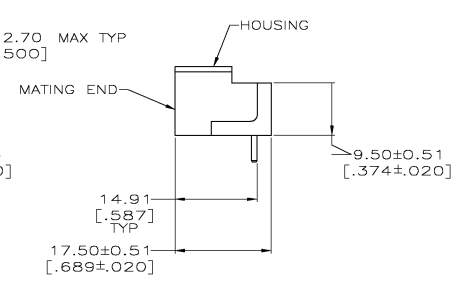
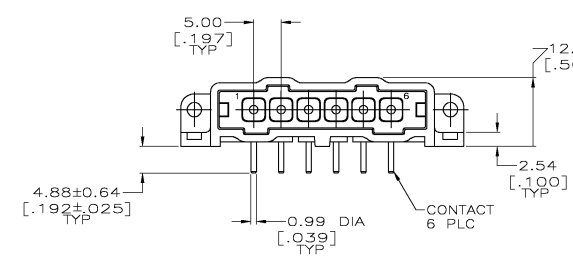
4 3 WCD 2 1

THIS DRAWING IS UNPUBLISHED. RELEASED FOR PUBLICATION. COPYRIGHT BY TYCO ELECTRONICS CORPORATION. ALL RIGHTS RESERVED.

REVISONS		DATE	BY	APP'D
P	LTR			
K		02MAY03	TK	GS



RECOMMENDED PC BOARD LAYOUT



- ▲ NYLON, RED.
- ▲ BRASS PER ASTM B36.
- ▲ 3.81μm [.000150] MIN TIN-LEAD OVER 2.54μm [.000100] MIN COPPER OR 1.27μm [.000050] MIN NICKEL.
- ▲ 0.76μm [.000030] MIN GOLD FOR A LENGTH OF 5.08 [.200] MIN FROM MATING END, 3.81μm [.000150] MIN TIN-LEAD FOR A LENGTH OF 5.51 [.217] MIN FROM OPPOSITE END, BOTH OVER 1.27μm [.000050] MIN NICKEL.
- ▲ .000150 MIN TIN OVER .000100 MIN CU, OR .000050 MIN TIN.
- ▲ 0.76μm [.000030] MIN GOLD FOR A LENGTH OF 5.08 [.200] MIN FROM MATING END, 3.81μm [.000150] MIN TIN FOR A LENGTH OF 5.51 [.217] MIN FROM OPPOSITE END, BOTH OVER 1.27μm [.000050] MIN NICKEL.

6	207378-7
5	207378-6
4	207378-3
3	207378-1
FINISH	PART NO

THIS DRAWING IS A CONTROLLED DOCUMENT. DW 01/07/92 L SIDE
 OK 7-24-92 S STONE
 PPG 7-24-92 WAC

TYCO Electronics Tyco Electronics Corporation
 Harrisburg, Pa

ATRAVIS
 PRODUCT SPEC

PIN HEADER ASSEMBLY, 6 POSN.
 IN-LINE, RIGHT ANGLE, SMALL
 METRIC CONNECTOR, METRIMATE

APPLICATION SPEC: —
 WEIGHT: —

MATERIAL: HOUSING: ▲
 CONTACTS: SEE TBL

SCALE: 2:1 SHEET 1 OF 1 REV K

H:\dmm\da