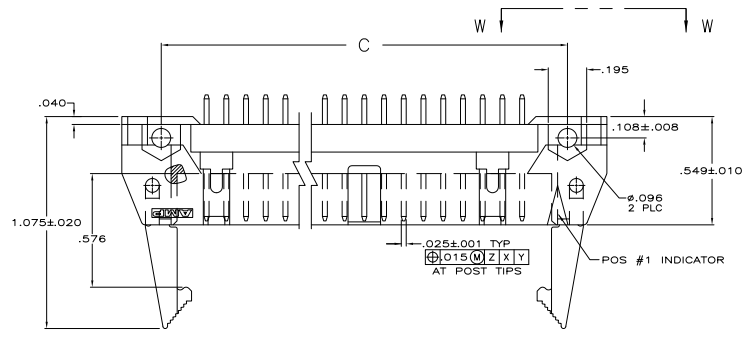
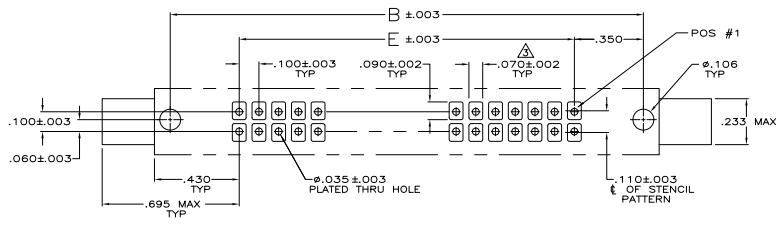
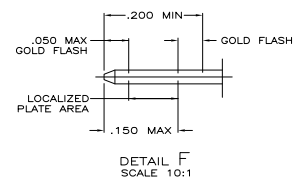
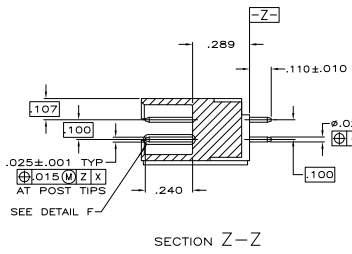
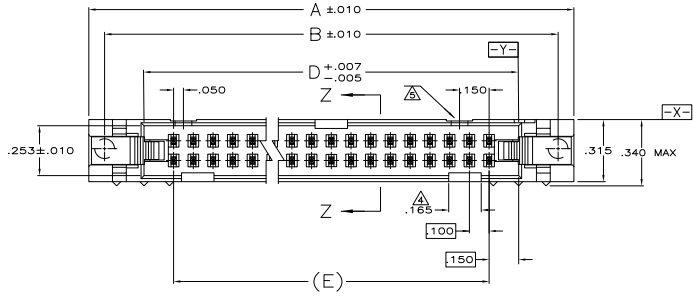
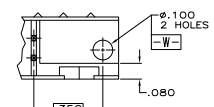


REV	DATE	DESCRIPTION	BY	APP'D
00				
1		REVISED FOR ECO-08-04046		



- ⚠ MOLDED PARTS: FLAME RETARDANT PCT, UL94V-0 RATED, COLOR RED.
- ⚠ POSTS: BRASS OR PHOS BRONZE.
- ⚠ POSTS: GOLD FLASH OVER PALLADIUM-NICKEL PLATE, .000030 MIN TOTAL ON THE LOCALIZED PLATE AREA, .000100 MIN TIN PLATE ON THE SOLDER-TAIL, .000050 MIN NICKEL UNDERPLATE ON THE ENTIRE POST.
- OR-
- ⚠ .000030 MIN GOLD PLATE ON THE LOCALIZED PLATE AREA, .000100 MIN TIN PLATE ON THE SOLDER-TAIL, .000050 MIN NICKEL UNDERPLATE ON THE ENTIRE POST.
- ⚠ RECOMMENDED STENCIL THICKNESS EQUALS .010
- ⚠ FOR 10 POS. HEADER ONLY, ONE SLOT LOCATED AS SHOWN.
- ⚠ NO SNAP-IN POLARIZING FEATURE ON THIS END FOR 10 & 14 POS HEADERS.



OBsolete	2.400	2.700	2.960	3.100	3.260	50	1-5111399-0
	1.600	1.900	2.060	2.300	2.460	34	5111399-8
	.900	1.200	1.360	1.600	1.760	20	5111399-4
	.700	1.000	1.160	1.400	1.560	16	5111399-3
	.600	.900	1.060	1.300	1.460	14	5111399-2
	.400	.700	.860	1.100	1.260	10	5111399-1

THIS DRAWING IS A CONTROLLED DOCUMENT. ATTACH TO ORIGINAL. TTI ELECTRONICS CORPORATION, Harrisburg, PA 17105-3608.

INCHES: 108-40018
 MFG: WILMSELEY
 DATE: 01-11-03
 REV: 1
 PART: 108-40018
 REV: 1
 DATE: 01-11-03
 DRAWING NO: A100779
 CUSTOMER DRAWING: G=5111399

ASSEMBLY, UNIVERSAL HEADER, .025 SQ POSTS, VERTICAL, W/ LATCHES, .062 PCB, RETLOW SOLDERABLE, AMP-LATCH

REVISIONS: 1, 2, 3, 4, 5, 6, 7, 8, 9, 10, 11, 12, 13, 14, 15, 16, 17, 18, 19, 20