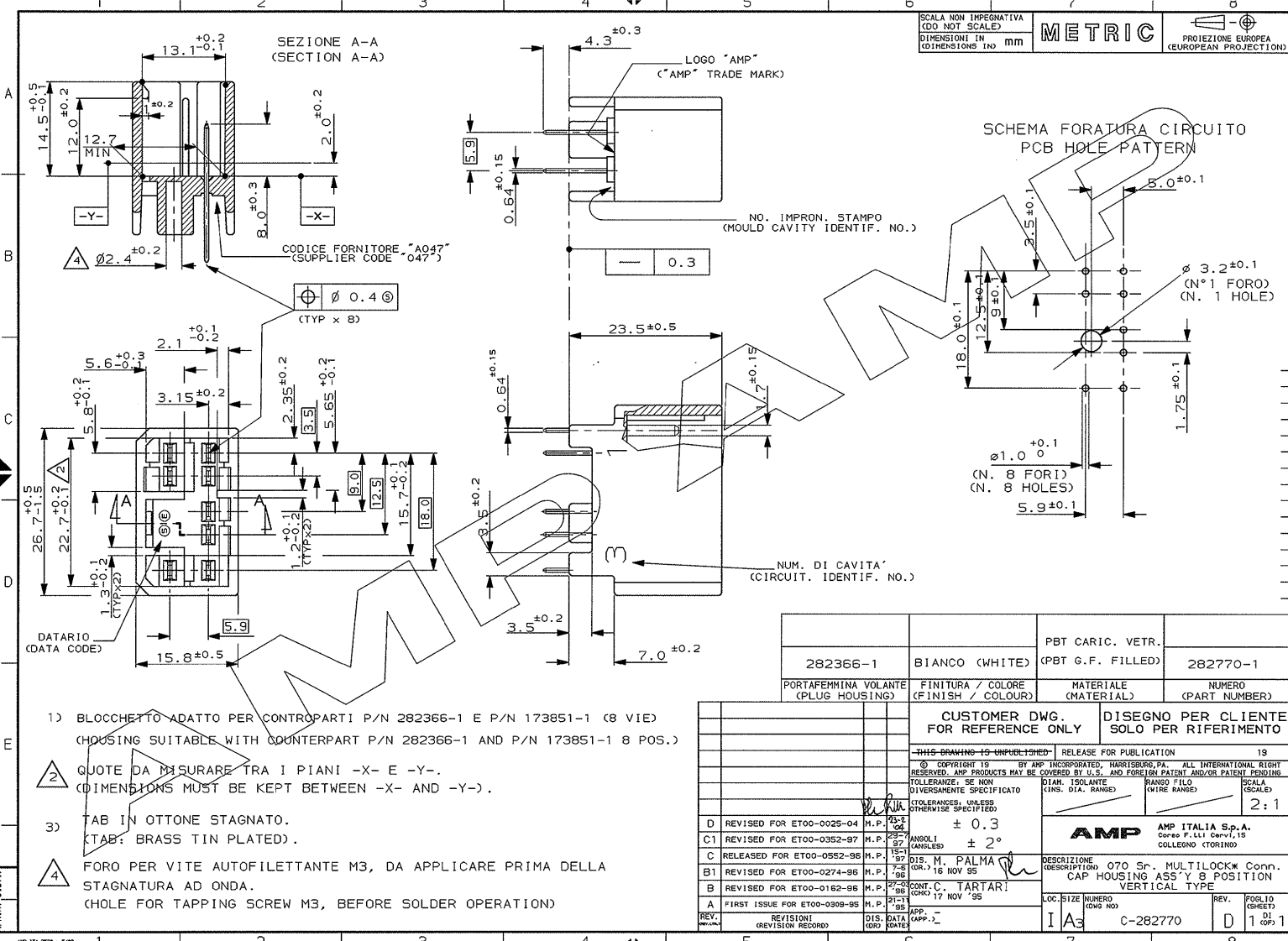


SCALA NON IMPERATIVA
(DO NOT SCALE)
DIMENSIONI IN mm
DIMENSIONS IN mm

METRIC

PROIEZIONE EUROPEA
(EUROPEAN PROJECTION)



- 1) BLOCCHETTO ADATTO PER CONTROPARTI P/N 282366-1 E P/N 173851-1 (8 VIE)
(HOUSING SUITABLE WITH COUNTERPART P/N 282366-1 AND P/N 173851-1 8 POS.)
- 2) QUOTE DA MISURARE TRA I PIANI -X- E -Y-.
(DIMENSIONS MUST BE KEPT BETWEEN -X- AND -Y-).
- 3) TAB IN OTTONE STAGNATO.
(TAB: BRASS TIN PLATED).
- 4) FORO PER VITE AUTOFILETTANTE M3, DA APPLICARE PRIMA DELLA STAGNATURA AD ONDA.
(HOLE FOR TAPPING SCREW M3, BEFORE SOLDER OPERATION)

282366-1	BIANCO (WHITE)	PBT CARIC. VETR. (PBT G.F. FILLED)	282770-1
PORTAFEMMINA VOLANTE (PLUG HOUSING)	FINITURA / COLORE (FINISH / COLOUR)	MATERIALE (MATERIAL)	NUMERO (PART NUMBER)

CUSTOMER DWG. FOR REFERENCE ONLY		DISEGNO PER CLIENTE SOLO PER RIFERIMENTO	
-THIS DRAWING IS UNPUBLISHED- RELEASE FOR PUBLICATION 19			
© COPYRIGHT IS RESERVED. AMP PRODUCTS MAY BE COVERED BY U.S. AND FOREIGN PATENT AND/OR PATENT PENDING.			
TOLLERANZE, SE NON DIVERSAMENTE SPECIFICATE	DIAM. ISOLANTE (INS. DIA. RANGE)	RANGO FILE (FILE RANGE)	SCALA (SCALE)
TOLERANCES, UNLESS OTHERWISE SPECIFIED			2:1
D REVISED FOR ET00-0025-04 H.P. 23-3 Oct	± 0.3	AMP AMP ITALIA S.p.A. Corso F.lli Cervi, 15 COLLEGO (TORINO)	
C1 REVISED FOR ET00-0352-97 H.P. 27-31 Aug	ANGOLI (ANGLES) ± 2°		
C RELEASED FOR ET00-0552-96 H.P. 18-19	DTS. M. PALMA (DR.) 16 NOV '95		
B1 REVISED FOR ET00-0274-96 H.P. 7-8 '96	CONT. C. TARTAR (COR.) 17 NOV '95		
B REVISED FOR ET00-0162-96 H.P. 27-28 '96			
A FIRST ISSUE FOR ET00-0369-95 H.P. 21-1 '95	APP. (APP.)	DESCRIZIONE (DESCRIPTION) 070 5r. MULTILOCK* Conn. CAP HOUSING ASS'Y 8 POSITION VERTICAL TYPE	LOC. SIZE NUMERO (CWS NO)
REV. (REVISION RECORD)	DIS. DATA (DATE)	I A3	C-282770
		D	1