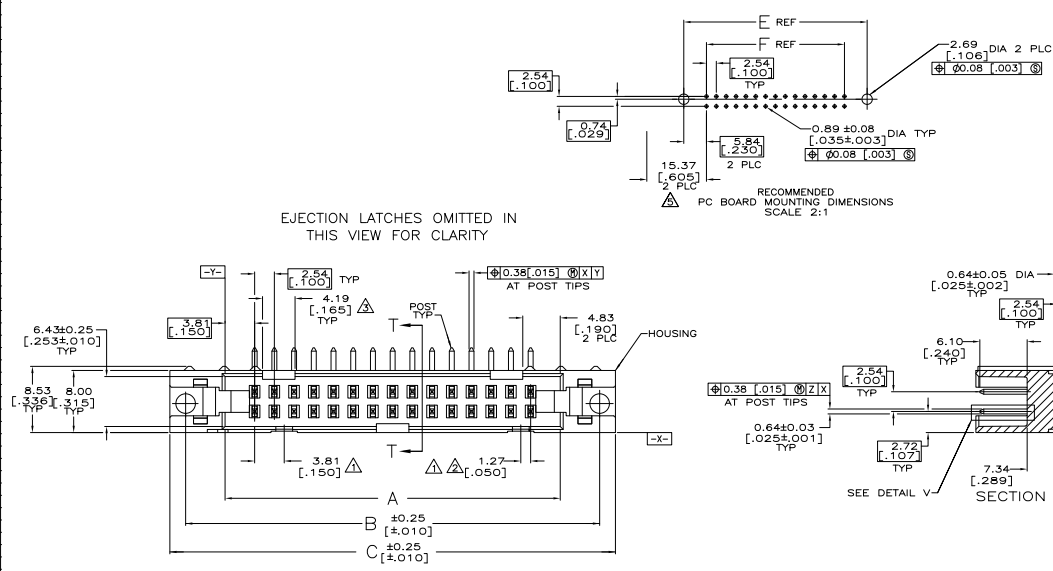
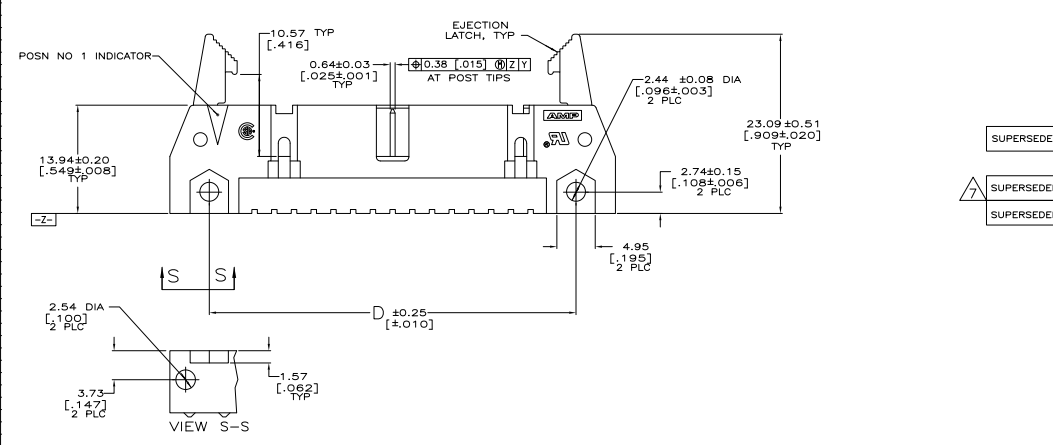


REV	DATE	DESCRIPTION	BY	CHK
00				
K		REVISED PER ECO-08-004952	BANDON	ZMR/SLB
KT		REVISED PER ECO-09-021826	11/20/10	KK/AEC



- △ COORDINATE DIMENSION APPLIES FROM BASIC LOCATION.
- △ 10 AND 14 POSITION SIZES CONTAIN ONLY ONE SLOT FOR SNAP-IN POLARIZER (MILITARY POLARIZATION) LOCATED AS SHOWN.
- △ 10 POSITION SIZES CONTAIN ONLY ONE SLOT FOR DUAL POLARIZATION, LOCATED AS SHOWN.
- 4. RECOMMENDED PRINTED CIRCUIT BOARD THICKNESS IS 1.57 [0.62].
- △ DISTANCE REQUIRED BY EJECTION LATCHES IN THE OPEN POSITION.
- △ POSTS: GOLD FLASH OVER PALLADIUM-NICKEL PLATE, 0.76μm[0.00030] MIN TOTAL ON THE LOCALIZED PLATE AREA, 2.54μm[0.00100] MIN TIN-LEAD PLATE ON THE SOLDER TAIL, 1.27μm[0.00050] MIN NICKEL UNDERPLATE ON THE ENTIRE POST.
- OR-
- △ 0.76μm[0.00030] MIN GOLD PLATE ON THE LOCALIZED PLATE AREA, 2.54μm[0.00100] MIN TIN-LEAD PLATE ON THE SOLDER TAIL, 1.27μm[0.00050] MIN NICKEL UNDERPLATE ON THE ENTIRE POST.
- △ OBSOLETE PARTS: OBSOLETE CIS STREAMLINING PER D.RENAUD/D.SINISI



OBSOLETE	53.34	65.02	65.02	75.18	71.12	60.96	44	1-499345-3
	[2.100]	[2.560]	[2.560]	[2.960]	[2.800]	[2.400]		
OBSOLETE	78.74	90.42	90.42	100.58	96.52	86.36	64	1-499345-2
	[3.100]	[3.560]	[3.560]	[3.960]	[3.800]	[3.400]		
OBSOLETE	73.66	85.34	85.34	95.50	91.44	81.28	60	1-499345-1
	[2.900]	[3.360]	[3.360]	[3.760]	[3.600]	[3.200]		
	60.96	72.64	72.64	82.80	78.74	68.58	50	1-499345-0
	[2.400]	[2.860]	[2.860]	[3.260]	[3.100]	[2.700]		
	48.26	59.94	59.94	70.10	66.04	55.88	40	499345-9
	[1.900]	[2.360]	[2.360]	[2.760]	[2.600]	[2.200]		
OBSOLETE	40.64	52.32	52.32	62.48	58.42	48.26	34	499345-8
	[1.600]	[2.060]	[2.060]	[2.460]	[2.300]	[1.900]		
SUPERSEDED BY 499913-7	35.56	47.24	47.24	57.40	53.34	43.18	30	499345-7
	[1.400]	[1.860]	[1.860]	[2.260]	[2.100]	[1.700]		
OBSOLETE	30.48	42.16	42.16	52.32	48.26	38.10	26	499345-6
	[1.200]	[1.660]	[1.660]	[2.060]	[1.900]	[1.500]		
SUPERSEDED BY 5499345-5	27.94	39.62	39.62	49.78	45.72	35.56	24	499345-5
	[1.100]	[1.560]	[1.560]	[1.960]	[1.800]	[1.400]		
SUPERSEDED BY 102160-4	22.86	34.54	34.54	44.70	40.64	30.48	20	499345-4
	[0.900]	[1.360]	[1.360]	[1.760]	[1.600]	[1.200]		
OBSOLETE	17.78	29.46	29.46	39.62	35.56	25.40	16	499345-3
	[0.700]	[1.160]	[1.160]	[1.560]	[1.400]	[1.000]		
	15.24	26.92	26.92	37.08	33.02	22.86	14	499345-2
	[0.600]	[1.060]	[1.060]	[1.460]	[1.300]	[0.900]		
	10.16	21.84	21.84	32.00	27.94	17.78	10	499345-1
	[0.400]	[0.860]	[0.860]	[1.260]	[1.100]	[0.700]		

	F	E	D	C	B	A	NO OF POSN	PART NUMBER

THIS DRAWING IS A CONTROLLED DOCUMENT. © 2010 TTI Electronics Corporation

DATE: 11-28-07
 REV: 0000
 PART: 108-40018
 CUSTOMER: TTI ELECTRONICS CORPORATION
 DRAWING NO: 108-40018
 DATE: 11-28-07
 REV: 0000
 PART: 108-40018
 CUSTOMER: TTI ELECTRONICS CORPORATION