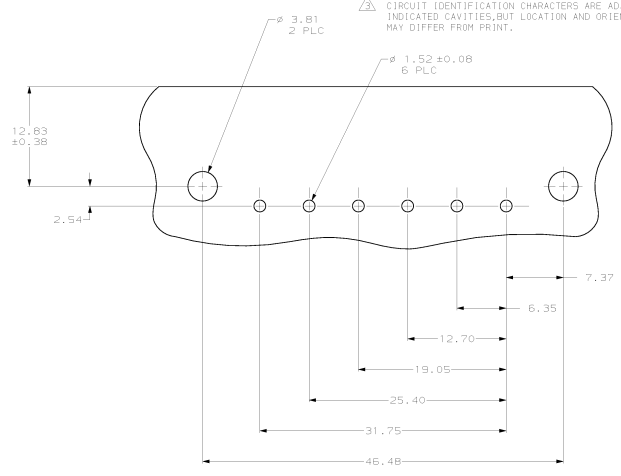
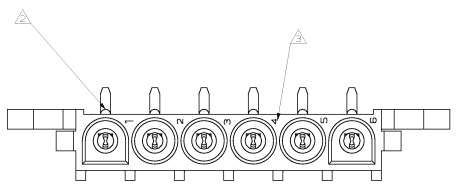
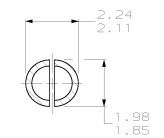
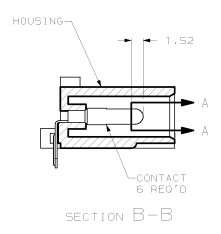
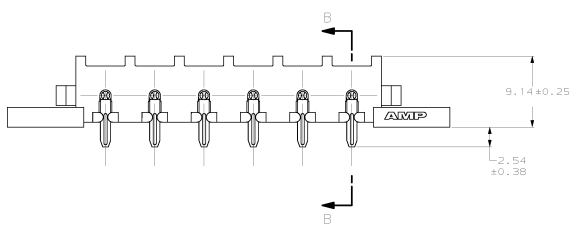
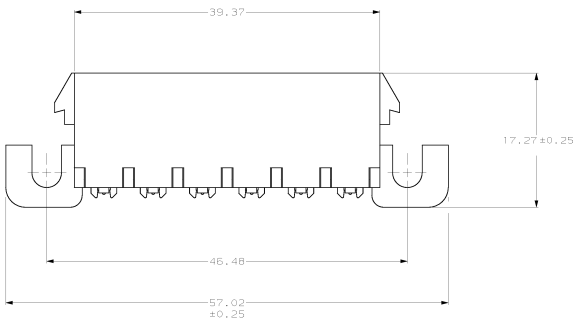


- PARTS COMPLY WITH AMP SOLDERABILITY SPEC 109-11-5.
- OPTIONAL CONSTRUCTION MAY DELETE THIS RIB.
- CIRCUIT IDENTIFICATION CHARACTERS ARE ADJACENT TO THE INDICATED CAVITIES, BUT LOCATION AND ORIENTATION MAY DIFFER FROM PRINT.



RECOMMENDED MOUNTING HOLE PATTERN FOR 1.57 THICK P.C. BOARD



SECTION A-A  
SCALE 10:1

IN	MILL	IN	MILL	IN	MILL
1.98	.078	12.70	.500	52.02	2.245
1.95	.075	9.14	.360	48.48	1.920
1.57	.062	7.37	.290	39.37	1.550
1.52	.060	6.35	.250	31.75	1.250
0.38	.015	3.81	.150	25.40	1.000
0.25	.010	2.54	.100	19.05	.750
0.13	.005	2.24	.088	17.27	.680
0.08	.003	2.11	.083	12.83	.505
MM	IN	MM	IN	MM	IN

CONVERSION TABLE

PH BRZ PRE-TIN	NYLON, UL94V-2, GRAY	794368-2
PH BRZ PRE-TIN	NYLON, UL94V-2, BLUE	794368-1
CONTACT	HOUSING	PART NO

THIS DRAWING IS A CONTROLLED DOCUMENT.		AMP Incorporated 1000 North 40th Street Allentown, PA 18105-0001	
METRIC SEE TABLE	IMPERIAL SEE TABLE	P/N: 794368-1 REV: 000001 DATE: 11/84	P/N: 794368-2 REV: 000001 DATE: 11/84

