

4

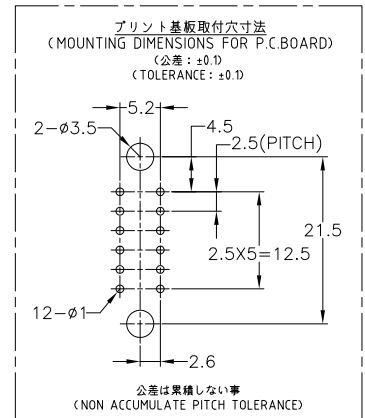
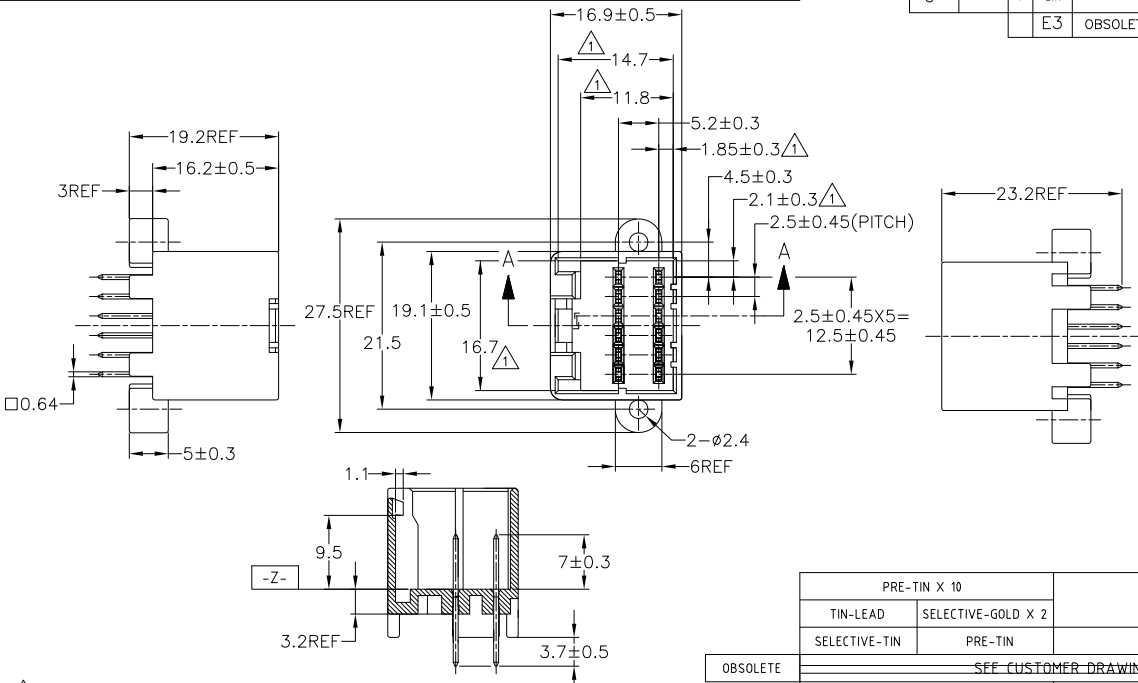
3

2

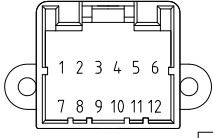
1

THIS DRAWING IS UNPUBLISHED. RELEASED FOR PUBLICATION  
 © COPYRIGHT - BY TYCO ELECTRONICS CORPORATION. ALL RIGHTS RESERVED.

LOC	DIST	REVISIONS			
P	LTR	DESCRIPTION	DATE	DWN	APVD
E3		OBsolete 2--1	ECR-07-023693	31OCT07	AY HY



- △ TO BE MEASURED WITHIN 2mm FROM [Z-Z]
- 2. APPLICABLE P.C. BOARD THICKNESS: 1.6mm
- 3. THE MATING COUNTERPART PART NUMBER: 174045
- 4. RECOMMENDED MOUNTING SCREW: 3mm DIA, 6mm LENGTH TAPPING SCREW SPECIFIED IN JIS B1115, B1122 (TIGHTENING TORQUE: 0.8N-M MAX.)
- △ CIRCUIT NUMBER



- △ [Z-Z]面より2mmの範囲で測定
- 2. 適用プリント基板厚: 1.6mm
- 3. 嵌合相手ハウジング型番: 174045
- 4. 推奨取付ネジ: JIS B1115, B1122 タッピンネジ, ナベ2種  
呼び径3, 長さ6mm (締付けトルク0.8N-M以下)
- △ 回路番号: 上図参照のこと

TOLERANCE UNLESS OTHERWISE SPECIFIED:	
単位: 種	公差
0 < x ≤ 10	±0.2
10 < x ≤ 30	±0.25
30 < x ≤ 100	±0.3
角度	±3°

PRE-TIN X 10		⑤ ⑥	黒 (BLACK)	4-174973-2
TIN-LEAD	SELECTIVE-GOLD X 2	---	緑 (GREEN)	2-174973-4
SELECTIVE-TIN	PRE-TIN	---	黒 (BLACK)	174973-3
PRE-TIN	PRE-TIN	---	黒 (BLACK)	174973-2
TIN-LEAD	SELECTIVE-GOLD X 12	① ~ ⑫	黒 (BLACK)	174973-1
半田付け部 SOLDERING SIDE	接触部側 CONTACT SIDE	金めっき請子使用回路番号 CIRCUIT NO. OF GOLD PLATED CONTACT		⑤
コンタクト仕上げ FINISH OF CONTACT		色 COLOR	型番 PART NUMBER	

THIS DRAWING IS A CONTROLLED DOCUMENT.

DIMENSIONS: 単位: 種 MM	TOLERANCES UNLESS OTHERWISE SPECIFIED: 公差	DWN: T. SHINOHARA	16APR02	16APR02	16APR02	16APR02	16APR02
0 PLC ±	1 PLC ±	CHK: A. YAMAGUCHI	APVD: K. BETSUI	Tyco Electronics Tyco Electronics AMP K.K. Kawasaki, Japan			
2 PLC ±	3 PLC ±	NAME: 040 SERIES MULTI-LOCK I/O CONN. 12Pos CAP HOUSING ASSY (VERTICAL TYPE)					
4 PLC ±	ANGLES ±	製品番号: 108-5244					
FINISH: 仕上		取付適用規格					
MATERIAL: HOUSING: PBT CONTACT: BRASS	SEE TABLE	WEIGHT: 4.2 g	SIZE: A3	CAGE CODE: 00779	DRAWING NO: 174973	RESTRICTED TO	
CUSTOMER DRAWING			SCALE: 2:1	SHEET: 1 OF 1	REV: E3		