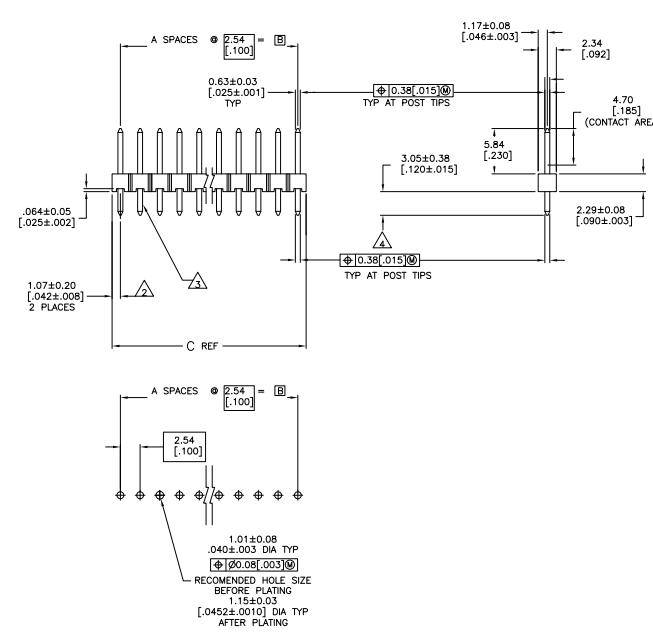


THIS DRAWING IS UNPUBLISHED
 © 2004 BY TDS ELECTRONICS CORPORATION. ALL RIGHTS RESERVED.



RECOMMENDED PC BOARD MOUNTING DIMENSIONS

- TRUE POSITION TOLERANCE OF THE POST TIPS APPLIES WHEN THE HEADERS ARE HELD FLAT AGAINST THE PRINTED CIRCUIT BOARD.
- THE NOTED DIMENSIONS APPLY AT THE INTERSECTION OF THE POST AND THE HOUSING.
- RETENTION FEATURES ON SOLDER TAILS, LOCATED AT MANUFACTURERS OPTION.
- Φ[1.020] FOR KINKED TAILS.
- 0.000025 [0.00001] GOLD IN CONTACT AREA, 0.00127-0.00504 [0.00050-0.00200] MATTE TIN-LEAD ON SOLDER TAILS, ALL OVER 0.00076-0.00203 [0.00030-0.00080] NICKEL.
- 0.000025 [0.00001] GOLD IN CONTACT AREA, 0.00127-0.00504 [0.00050-0.00200] MATTE TIN ON SOLDER TAILS, ALL OVER 0.00076-0.00203 [0.00030-0.00080] NICKEL.
- HIGH TEMPERATURE CONFIGURATION
- OBSOLETE PARTS: OBSOLETE CIS STREAMLINING PER D.RENAUD/D.SINISI

OBSOLETE

REV	DATE	DESCRIPTION	BY	APP'D
E	EC 023C 0828 04		1MFBMS	BSV/JLG
E1	REVISED PER ECO-09-020689		29MAG09	KK/AEG

REV	DATE	DESCRIPTION	BY	APP'D
39	40	3-146405-8		
38	39	3-146405-7		
37	38	3-146405-6		
36	37	3-146405-5		
35	36	3-146405-4		
34	35	3-146405-3		
33	34	3-146405-2		
32	33	3-146405-1		
31	32	3-146405-0		
30	31	2-146405-9		
29	30	2-146405-8		
28	29	2-146405-7		
27	28	2-146405-6		
26	27	2-146405-5		
25	26	2-146405-4		
24	25	2-146405-3		
23	24	2-146405-2		
22	23	2-146405-1		
21	22	2-146405-0		
20	21	1-146405-9		
19	20	1-146405-8		
18	19	1-146405-7		
17	18	1-146405-6		
16	17	1-146405-5		
15	16	1-146405-4		
14	15	1-146405-3		
13	14	1-146405-2		
12	13	1-146405-1		
11	12	1-146405-0		
10	11	146405-9		
9	10	146405-8		
8	9	146405-7		
7	8	146405-6		
6	7	146405-5		
5	6	146405-4		
4	5	146405-3		
3	4	146405-2		
2	3	146405-1		

REMARKS	PLATING	C	B	A	NO. OF POSITIONS	PART NUMBER
	Φ	101.19	99.06		39	40
	Φ	98.65	96.52		38	39
	Φ	96.11	93.98		37	38
	Φ	93.57	91.44		36	37
	Φ	91.03	88.90		35	36
	Φ	88.49	86.36		34	35
	Φ	85.95	83.82		33	34
	Φ	83.41	81.28		32	33
	Φ	80.87	78.74		31	32
	Φ	78.33	76.20		30	31
	Φ	75.79	73.66		29	30
	Φ	73.25	71.12		28	29
	Φ	70.71	68.58		27	28
	Φ	68.17	66.04		26	27
	Φ	65.63	63.5		25	26
	Φ	63.09	60.96		24	25
	Φ	60.55	58.42		23	24
	Φ	58.01	55.88		22	23
	Φ	55.47	53.34		21	22
	Φ	52.93	50.8		20	21
	Φ	50.39	48.26		19	20
	Φ	47.85	45.72		18	19
	Φ	45.31	43.18		17	18
	Φ	42.77	40.64		16	17
	Φ	40.23	38.10		15	16
	Φ	37.69	35.56		14	15
	Φ	35.15	33.02		13	14
	Φ	32.61	30.48		12	13
	Φ	30.07	27.94		11	12
	Φ	27.53	25.40		10	11
	Φ	24.99	22.86		9	10
	Φ	22.45	20.32		8	9
	Φ	19.91	17.78		7	8
	Φ	17.37	15.24		6	7
	Φ	14.83	12.70		5	6
	Φ	12.29	10.16		4	5
	Φ	9.75	7.62		3	4
	Φ	7.21	5.08		2	3

THIS DRAWING IS A CONTROLLED DOCUMENT. [X] YES [] NO

REVISIONS: [X] REVISED PER ECO-09-020689

DATE: 10/27/09

BY: [X] []

APP'D: [X] []

PAGE: 41 OF 41

CUSTOMER DRAWING

DATE: 10/27/09

BY: [X] []

APP'D: [X] []

PAGE: 1 OF 2

REV	DATE	DESCRIPTION	BY	CHK	APP
AD	00	SEE SHEET 1	-	-	-

REMARKS	PLATING	C	B	A	NO. OF POSITIONS	PART NUMBER
7	6	101.19	99.06		40	8-146405-8
7	6	[3.984]	[3.900]		39	
7	6	98.65	96.52		38	8-146405-7
7	6	[3.684]	[3.800]		37	
7	6	96.11	93.98		37	8-146405-6
7	6	[3.784]	[3.700]		36	
7	6	93.57	91.44		36	8-146405-5
7	6	[3.684]	[3.600]		35	
7	6	91.03	88.90		35	8-146405-4
7	6	[3.584]	[3.500]		34	
7	6	88.49	86.36		34	8-146405-3
7	6	[3.684]	[3.400]		33	
7	6	85.95	83.82		33	8-146405-2
7	6	[3.384]	[3.300]		32	
7	6	83.41	81.28		32	8-146405-1
7	6	[3.284]	[3.200]		31	
7	6	80.87	78.74		31	8-146405-0
7	6	[3.184]	[3.100]		30	
7	6	78.33	76.20		30	7-146405-9
7	6	[3.084]	[3.000]		29	
7	6	75.79	73.66		29	7-146405-8
7	6	[2.984]	[2.900]		28	
7	6	73.25	71.12		28	7-146405-7
7	6	[2.884]	[2.800]		27	
7	6	70.71	68.58		27	7-146405-6
7	6	[2.784]	[2.700]		26	
7	6	68.17	66.04		26	7-146405-5
7	6	[2.684]	[2.600]		25	
7	6	65.63	63.5		25	7-146405-4
7	6	[2.584]	[2.500]		24	
7	6	63.09	60.96		24	7-146405-3
7	6	[2.484]	[2.400]		23	
7	6	60.55	58.42		23	7-146405-2
7	6	[2.384]	[2.300]		22	
7	6	58.01	55.88		22	7-146405-1
7	6	[2.284]	[2.200]		21	
7	6	55.47	53.34		21	7-146405-0
7	6	[2.184]	[2.100]		20	
7	6	52.93	50.80		20	6-146405-9
7	6	[2.084]	[2.000]		19	
7	6	50.39	48.26		19	6-146405-8
7	6	[1.984]	[1.900]		18	
7	6	47.85	45.72		18	6-146405-7
7	6	[1.884]	[1.800]		17	
7	6	45.31	43.18		17	6-146405-6
7	6	[1.784]	[1.700]		16	
7	6	42.77	40.64		16	6-146405-5
7	6	[1.684]	[1.600]		15	
7	6	40.23	38.10		15	6-146405-4
7	6	[1.584]	[1.500]		14	
7	6	37.69	35.56		14	6-146405-3
7	6	[1.484]	[1.400]		13	
7	6	35.15	33.02		13	6-146405-2
7	6	[1.384]	[1.300]		12	
7	6	32.61	30.48		12	6-146405-1
7	6	[1.284]	[1.200]		11	
7	6	30.07	27.94		11	6-146405-0
7	6	[1.184]	[1.100]		10	
7	6	27.53	25.40		10	5-146405-9
7	6	[1.084]	[1.000]		9	
7	6	24.99	22.86		9	5-146405-8
7	6	[.984]	[.900]		8	
7	6	22.45	20.32		8	5-146405-7
7	6	[.884]	[.800]		7	
7	6	19.91	17.78		7	5-146405-6
7	6	[.784]	[.700]		6	
7	6	17.37	15.24		6	5-146405-5
7	6	[.684]	[.600]		5	
7	6	14.83	12.70		5	5-146405-4
7	6	[.584]	[.500]		4	
7	6	12.29	10.16		4	5-146405-3
7	6	[.484]	[.400]		3	
7	6	9.75	7.62		3	5-146405-2
7	6	[.384]	[.300]		2	
7	6	7.21	5.08		2	5-146405-1
7	6	[.284]	[.200]		3	

OBSOLETE

OBSOLETE

THIS DRAWING IS A CONTROLLED DOCUMENT.		REV. 1	DATE	12/11/08
DRAWN BY: [Signature]		DESIGNED BY: [Signature]	DATE	12/11/08
CHECKED BY: [Signature]		DATE	12/11/08	
APPROVED BY: [Signature]		DATE	12/11/08	
MATERIAL: PHOSPHOR BRONZE		FINISH: [Blank]	DATE	12/11/08
SEE TABLE		DATE	12/11/08	
CUSTOMER DRAWING		DATE	12/11/08	
PART NUMBER: 8-146405		DATE	12/11/08	
DESCRIPTION: HEADER ASSEMBLY, MOD II, BREAKAWAY, SINGLE ROW, 100 C/L, VERTICAL, 100 SQ PROTS WITH RETENTIVE FEATURES		DATE	12/11/08	
TITELIST: 8-146405		DATE	12/11/08	
REV. 1		DATE	12/11/08	