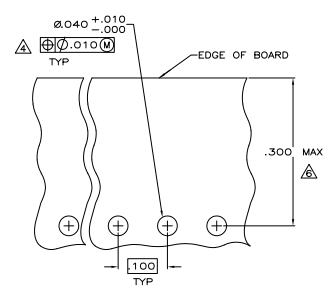
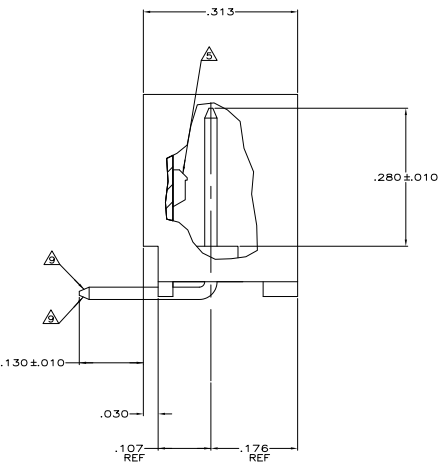
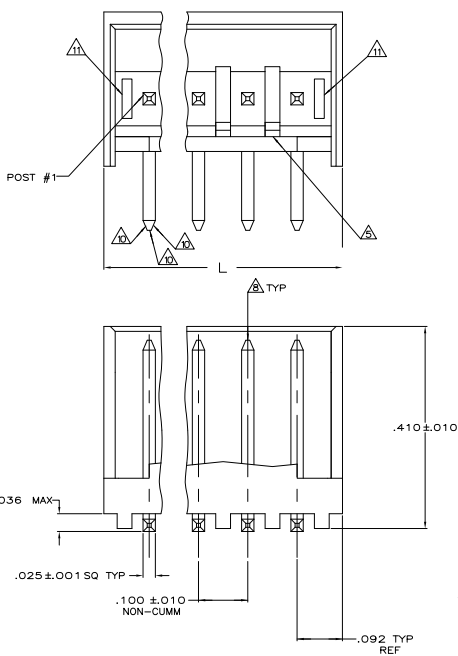


REV	DATE	DESCRIPTION	BY	CHK
00				
01		REVISED PER ECD-11-004917	11MMR11	RK HMR



RECOMMENDED MOUNTING HOLE PATTERN FOR .063 THK PRINTED CIRCUIT BOARD

- △ MATERIAL: HEADER - POLYESTER UL94V-0 (BLACK)
POST - COPPER ALLOY.
- △ SOLDER SIDE OF P.C. BOARD SHOWN.
- 3. PARTS COMPLY WITH AMP SOLDERABILITY SPEC 109-11-2.
- △ ONE HOLE MAY BE UNDERSIZED (.032-.035 DIA) FOR ASSEMBLY RETENTION DURING WAVE SOLDERING.
- △ LATCH DETENT FEATURE OCCURS 2 PLACES ON EACH END (MAXIMUM OF FOUR PER PART). FOR 2 THRU 5 CIRCUIT HEADERS, LATCH FEATURE OCCURS BETWEEN EACH CIRCUIT.
- △ COORDINATE DIMENSION APPLIES FROM CENTER OF ACTUAL FEATURE.
- △ POST: 93/7 MATTE TIN-LEAD PLATING (-2 THRU -14) OR 100% MATTE TIN PLATING (-32 THRU -44).
- △ POST MUST WITHSTAND 3.0 LBS (13.34 NEWTONS) MIN FORCE WITHOUT DISLODGING, EITHER DIRECTION.
- △ TWO SIDES OF TAPER, AS SHOWN, MUST BE PLATED. TYPICAL, BOTH ENDS.
- △ TWO SIDES OF TAPER, AS SHOWN, AND TIP MAY BE UNPLATED. TYPICAL, BOTH ENDS.
- △ SLOTS MAY OR MAY NOT APPEAR ON THESE PARTS.

12 UL RECOGNIZED (UR) LOGO AND CSA LOGO WILL APPEAR ON THE SIDE OF THE PART. THE AMP LOGO MAY APPEAR ON THE SIDE OR ON BOTTOM OF PART.

IN	MM	NO OF POSITIONS	PART NUMBER
1.484	37.69	14	4-644894-4
1.384	35.15	13	4-644894-3
1.284	32.61	12	4-644894-2
1.184	30.07	11	4-644894-1
1.084	27.53	10	4-644894-0
.984	24.99	9	3-644894-9
.884	22.45	8	3-644894-8
.784	19.91	7	3-644894-7
.684	17.37	6	3-644894-6
.584	14.83	5	3-644894-5
.484	12.29	4	3-644894-4
.384	9.75	3	3-644894-3
.284	7.21	2	3-644894-2

.030	0.76	.107	2.72	-	-
.025	0.64	.100	2.54	-	-
.010	0.25	.092	2.34	.410	10.41
.005	0.13	.063	1.60	.313	7.95
.001	0.03	.040	1.02	.300	7.62
.0003500	.00889	.036	0.91	.280	7.11
.0001500	.00381	.035	0.89	.176	4.47
.000	0.00	.032	0.81	.130	3.30
IN	MM	IN	MM	IN	MM



THIS DRAWING IS A CONTROLLED DOCUMENT.

DATE: 10/11/01

REVISED PER ECD-11-004917

TE Connectivity

CST-100 SHROUDED HEADER ASSEMBLY, FRICTION LOCK, RIGHT ANGLE POST, TIN OR TIN LEAD PLATED.

SIZE: 10-11

CUSTOMER DRAWING: A100779