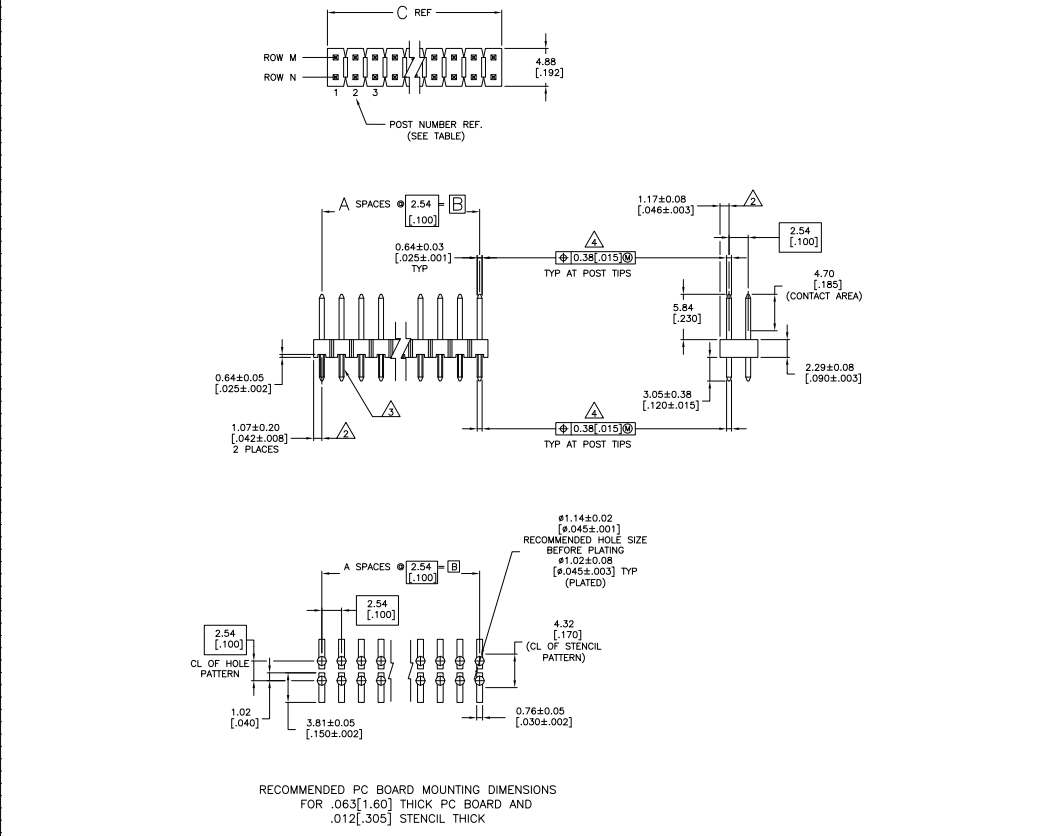


THIS DRAWING IS UNCLASSIFIED
 UNLESS INDICATED OTHERWISE
 ALL RIGHTS RESERVED

REV	DATE	DESCRIPTION	BY	CHK	APP
AD	00	REVISED PER EDD-11-00927	11MM11	JK	HMR



REV	DATE	DESCRIPTION	BY	CHK	APP
△	10119	99.08	39	80	4-146269-0
△	3984	39.00	38	78	3-146269-0
△	3984	39.88	37	76	3-146269-6
△	3984	39.15	36	74	3-146269-7
△	3984	38.80	35	72	3-146269-6
△	3984	39.00	34	70	3-146269-6
△	3984	39.00	33	68	3-146269-4
△	3984	39.00	32	66	3-146269-3
△	3984	39.00	31	64	3-146269-2
△	3984	39.00	30	62	3-146269-1
△	3984	39.00	29	60	3-146269-0
△	3984	39.00	28	58	2-146269-0
△	3984	39.00	27	56	2-146269-8
△	3984	39.00	26	54	2-146269-7
△	3984	39.00	25	52	2-146269-6
△	3984	39.00	24	50	2-146269-5
△	3984	39.00	23	48	2-146269-4
△	3984	39.00	22	46	2-146269-3
△	3984	39.00	21	44	2-146269-2
△	3984	39.00	20	42	2-146269-1
△	3984	39.00	19	40	2-146269-0
△	3984	39.00	18	38	1-146269-9
△	3984	39.00	17	36	1-146269-8
△	3984	39.00	16	34	1-146269-7
△	3984	39.00	15	32	1-146269-6
△	3984	39.00	14	30	1-146269-5
△	3984	39.00	13	28	1-146269-4
△	3984	39.00	12	26	1-146269-3
△	3984	39.00	11	24	1-146269-2
△	3984	39.00	10	22	1-146269-1
△	3984	39.00	9	20	1-146269-0
△	3984	39.00	8	18	1-146269-9
△	3984	39.00	7	16	1-146269-8
△	3984	39.00	6	14	1-146269-7
△	3984	39.00	5	12	1-146269-6
△	3984	39.00	4	10	1-146269-5
△	3984	39.00	3	8	1-146269-4
△	3984	39.00	2	6	1-146269-3
△	3984	39.00	1	4	1-146269-2
△	3984	39.00	-	2	1-146269-1

FINISH	C	B	A	NO. OF POSITIONS	PART NUMBER
△	△	△	△	△	△

THIS DRAWING IS A CONTROLLED DOCUMENT. IT IS THE PROPERTY OF ETE. IT IS TO BE KEPT IN CONFIDENCE AND NOT TO BE REPRODUCED OR TRANSMITTED IN ANY FORM OR BY ANY MEANS, ELECTRONIC OR MECHANICAL, INCLUDING PHOTOCOPYING, RECORDING, OR BY ANY INFORMATION STORAGE AND RETRIEVAL SYSTEM. WITHOUT THE WRITTEN PERMISSION OF ETE.

DATE: 10/19/99
 DRAWN BY: [Signature]
 CHECKED BY: [Signature]
 APPROVED BY: [Signature]

ETE Connectivity
 HEADER ASSEMBLY, MOD II, BREAKAWAY, DOUBLE ROW, .100 X.100 CL VERTICAL, WITH RETENTION FEATURE, 225 SO. POSTS, HIGH TEMPERATURE

SIZE: A1 100779 G=146269
 SHEET: 4.1 OF 2

THIS DRAWING IS UNPUBLISHED
 ALL RIGHTS RESERVED

REV	DATE	DESCRIPTION	BY	CHK	APP
AD 00		SEE SHEET 1			

- TRUE POSITION TOLERANCE OF THE POST TIPS APPLIES WHEN THE HEADER IS HELD FLAT AGAINST THE PRINTED CIRCUIT BOARD.
- THE NOTED DIMENSIONS APPLY AT THE INTERSECTION OF THE POST AND HOUSING.
- RETENTION FEATURES ON SOLDER TAILS, LOCATED AT MANUFACTURERS OPTION.
- $\Phi 0.51(0.2030)$ FOR KINKED TAILS.
- HOUSING: LCP, COLOR-BLACK.
POST: PHOSPHOR BRONZE
- 0.000762[0.00030] GOLD IN CONTACT AREA.
0.00254-0.00508 [0.000100-0.000200] MATTE TIN-LEAD ON SOLDER TAIL,
ALL OVER 0.00127 [0.00050] NICKEL.
- 0.000762[0.00030] GOLD IN CONTACT AREA.
0.00254-0.00508 [0.000100-0.000200] MATTE TIN ON SOLDER TAIL,
ALL OVER 0.00127 [0.00050] NICKEL.
- OBSOLETE PARTS: OBSOLETE CIS STREAMLINING PER D.RENAUD/D.SINISI

REV	DATE	DESCRIPTION	BY	CHK	APP
39	80	9-146269-0			
OBSOLETE	38	78	-8-146269-9		
OBSOLETE	37	76	-8-146269-8		
OBSOLETE	36	74	-8-146269-7		
OBSOLETE	35	72	-8-146269-6		
OBSOLETE	34	70	-8-146269-5		
OBSOLETE	33	68	-8-146269-4		
OBSOLETE	32	66	-8-146269-3		
OBSOLETE	31	64	-8-146269-2		
OBSOLETE	30	62	-8-146269-1		
OBSOLETE	29	60	-8-146269-0		
OBSOLETE	28	58	-7-146269-9		
OBSOLETE	27	56	-7-146269-8		
OBSOLETE	26	54	-7-146269-7		
OBSOLETE	25	52	-7-146269-6		
OBSOLETE	24	50	-7-146269-5		
OBSOLETE	23	48	-7-146269-4		
OBSOLETE	22	46	-7-146269-3		
OBSOLETE	21	44	-7-146269-2		
OBSOLETE	20	42	-7-146269-1		
OBSOLETE	19	40	7-146269-0		
OBSOLETE	18	38	-6-146269-9		
OBSOLETE	17	36	-6-146269-8		
OBSOLETE	16	34	-6-146269-7		
OBSOLETE	15	32	-6-146269-6		
OBSOLETE	14	30	6-146269-5		
OBSOLETE	13	28	-6-146269-4		
OBSOLETE	12	26	-6-146269-3		
OBSOLETE	11	24	-6-146269-2		
OBSOLETE	10	22	-6-146269-1		
OBSOLETE	9	20	6-146269-0		
OBSOLETE	8	18	-5-146269-9		
OBSOLETE	7	16	5-146269-8		
OBSOLETE	6	14	5-146269-7		
OBSOLETE	5	12	5-146269-6		
OBSOLETE	4	10	5-146269-5		
OBSOLETE	3	8	5-146269-4		
OBSOLETE	2	6	5-146269-3		
OBSOLETE	1	4	-5-146269-2		
OBSOLETE	2	-	5-146269-1		

THIS DRAWING IS A CONTROLLED DOCUMENT.		DATE	BY	CHK	APP
DRAWN BY: [Signature]		DATE	BY	CHK	APP
CHECKED BY: [Signature]		DATE	BY	CHK	APP
APPROVED BY: [Signature]		DATE	BY	CHK	APP
TITLE: CUSTOMER DRAWING		DATE: 100779	BY: G=146269	CHK: [Signature]	APP: [Signature]