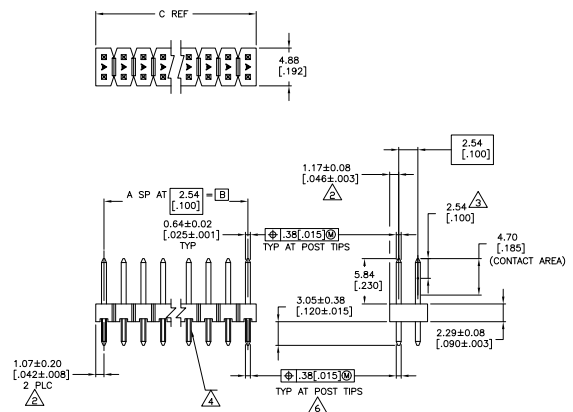
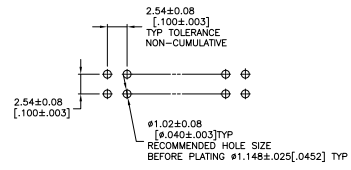


REV	DATE	DESCRIPTION	BY	APP
AD 39		REVISED PER ECO-10-000443	13MM10	KK AEG



- TRUE POSITION TOLERANCE OF THE POST TIPS APPLIES WHEN THE HEADER IS HELD FLAT AGAINST THE PRINTED CIRCUIT BOARD
- THE NOTED DIMENSIONS APPLY AT THE INTERSECTION OF THE POST AND HOUSING
- POINT OF MEASUREMENT FOR PLATING THICKNESS
- RETENTION FEATURE ON SOLDER TAILS LOCATED AT MANUFACTURER'S OPTION.
- Φ [0.020] FOR KINKED TAILS
- OBsolete PARTS: OBsolete CIS STREAMLINING PER D.RENAUD/D.SINISI



RECOMMENDED HOLE LAYOUT

101.19	3.984	99.06	3.900	39	80	4-146145-0
98.65	3.884	96.52	3.800	38	78	3-146145-9
96.74	3.784	93.98	3.700	37	76	3-146145-8
93.57	3.684	91.44	3.600	36	74	3-146145-7
91.03	3.584	88.90	3.500	35	72	3-146145-6
88.49	3.484	86.36	3.400	34	70	3-146145-5
85.95	3.384	83.82	3.300	33	68	3-146145-4
83.41	3.284	81.28	3.200	32	66	3-146145-3
80.87	3.184	78.74	3.100	31	64	3-146145-2
78.33	3.084	76.20	3.000	30	62	3-146145-1
75.79	2.984	73.66	2.900	29	60	3-146145-0
73.25	2.884	71.12	2.800	28	58	2-146145-9
70.71	2.784	68.58	2.700	27	56	2-146145-8
68.17	2.684	66.04	2.600	26	54	2-146145-7
65.63	2.584	63.50	2.500	25	52	2-146145-6
63.09	2.484	60.96	2.400	24	50	2-146145-5
60.55	2.384	58.42	2.300	23	48	2-146145-4
58.01	2.284	55.88	2.200	22	46	2-146145-3
55.47	2.184	53.34	2.100	21	44	2-146145-2
52.93	2.084	50.80	2.000	20	42	2-146145-1
50.39	1.984	48.26	1.900	19	40	2-146145-0
47.85	1.884	45.72	1.800	18	38	1-146145-9
45.31	1.784	43.18	1.700	17	36	1-146145-8
42.77	1.684	40.64	1.600	16	34	1-146145-7
40.23	1.584	38.10	1.500	15	32	1-146145-6
37.69	1.484	35.56	1.400	14	30	1-146145-5
35.15	1.384	33.02	1.300	13	28	1-146145-4
32.61	1.284	30.48	1.200	12	26	1-146145-3
30.07	1.184	27.94	1.100	11	24	1-146145-2
27.53	1.084	25.40	1.000	10	22	1-146145-1
24.99	.984	22.86	.900	9	20	1-146145-0
22.45	.884	20.32	.800	8	18	146145-9
19.91	.784	17.78	.700	7	16	146145-8
17.37	.684	15.24	.600	6	14	146145-7
14.83	.584	12.70	.500	5	12	146145-6
12.29	.484	10.16	.400	4	10	146145-5
9.75	.384	7.62	.300	3	8	146145-4
7.21	.284	5.08	.200	2	6	146145-3
4.67	.184	2.54	.100	1	4	146145-2
2.13	.084	0.00	0.000	0	2	146145-1

REV	DATE	DESCRIPTION	BY	APP
AD 39		REVISED PER ECO-10-000443	13MM10	KK AEG

THIS DRAWING IS A CONTROLLED DOCUMENT.	DATE	BY	APP
REVISIONS	DATE	BY	APP
1	00779	KK	AEG

Customer Drawing