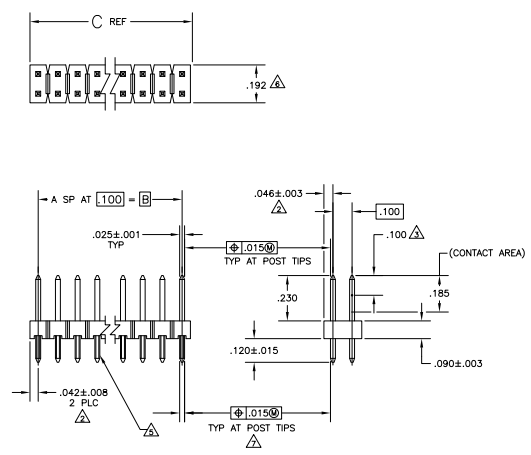
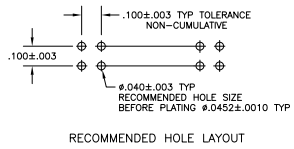


THIS DRAWING IS UNPUBLISHED
 ALL RIGHTS RESERVED

| REV | DATE | DESCRIPTION | BY | CHK |
|-----|------|---------------------------|--------|--------|
| AD | 00 | | | |
| R2 | | REVISED PER EDD-11-004917 | 11MR11 | RK HMR |



- 1 TRUE POSITION TOLERANCE OF THE POST TIPS APPLIES WHEN THE HEADER IS HELD FLAT AGAINST THE PRINTED CIRCUIT BOARD.
- \triangle THE NOTED DIMENSIONS APPLY AT THE INTERSECTION OF THE POST AND HOUSING.
- \triangle POINT OF MEASUREMENT FOR PLATING THICKNESS.
- \triangle PART INDICATED IS PACKAGED IN SINGLE TUBES.
- \triangle RETENTION FEATURES ON SOLDER TAILS, LOCATED AT MANUFACTURERS OPTION.
- \triangle FOR 2 POSITION PART ONLY, THE NOTED DIMENSION IS $.184$
- \triangle $\phi .10200$ FOR KINKED TAILS
- \triangle OBSOLETE PARTS: OBSOLETE CIS STREAMLINING PER D.RENAUD/D.SINISI



| | | | | | |
|--------------------------|-------------------|-------|----|-----|------------|
| \triangle OBSOLETE | 1.784 | 1.700 | 17 | 36 | 2-104351-3 |
| SUPERSEDED BY 104351-8 | \triangle .784 | .700 | 7 | 16 | 2-104351-2 |
| SUPERSEDED BY 1-104351-3 | \triangle 1.284 | 1.200 | 12 | 26 | 2-104351-1 |
| | 3.984 | 3.900 | 39 | 80 | 2-104351-0 |
| \triangle OBSOLETE | 2.984 | 2.900 | 29 | 60 | 1-104351-9 |
| | 2.484 | 2.400 | 24 | 50 | 1-104351-8 |
| | 1.984 | 1.900 | 19 | 40 | 1-104351-7 |
| | 1.684 | 1.600 | 16 | 34 | 1-104351-6 |
| \triangle OBSOLETE | 1.434 | 1.400 | 14 | 30 | 1-104351-5 |
| SUPERSEDED BY 6-146268-4 | 1.384 | 1.300 | 13 | 28 | 1-104351-4 |
| | 1.284 | 1.200 | 12 | 26 | 1-104351-3 |
| | 1.184 | 1.100 | 11 | 24 | 1-104351-2 |
| SUPERSEDED BY 6-146268-1 | 1.084 | 1.000 | 10 | 22 | 1-104351-1 |
| | .984 | .900 | 9 | 20 | 1-104351-0 |
| \triangle OBSOLETE | .884 | .800 | 8 | 18 | 1-104351-0 |
| | .784 | .700 | 7 | 16 | 104351-8 |
| | .684 | .600 | 6 | 14 | 104351-7 |
| | .584 | .500 | 5 | 12 | 104351-6 |
| | .484 | .400 | 4 | 10 | 104351-5 |
| | .384 | .300 | 3 | 8 | 104351-4 |
| | .284 | .200 | 2 | 6 | 104351-3 |
| | .184 | .100 | 1 | 4 | 104351-2 |
| | .084 | --- | 2 | --- | 104351-1 |

| REMARKS | C | B | A | NO OF POSN | ASSEMBLY PART NUMBER |
|---------|---|---|---|------------|----------------------|
| | | | | | |

| THIS DRAWING IS A CONTROLLED DOCUMENT. | | REV | DATE | DESCRIPTION | BY | CHK |
|--|-------------|-----|------|-------------|----|-----|
| INCHES | MILLIMETERS | AD | 00 | | | |

TE Connectivity
 HEADER ASSY, MOD II, BREAKAWAY, DBL ROW, .100K/100 CL VERT, .025 SO POSTS, WITH RETENTION FEATURE.
 SIZE: A1 - 104351