

4

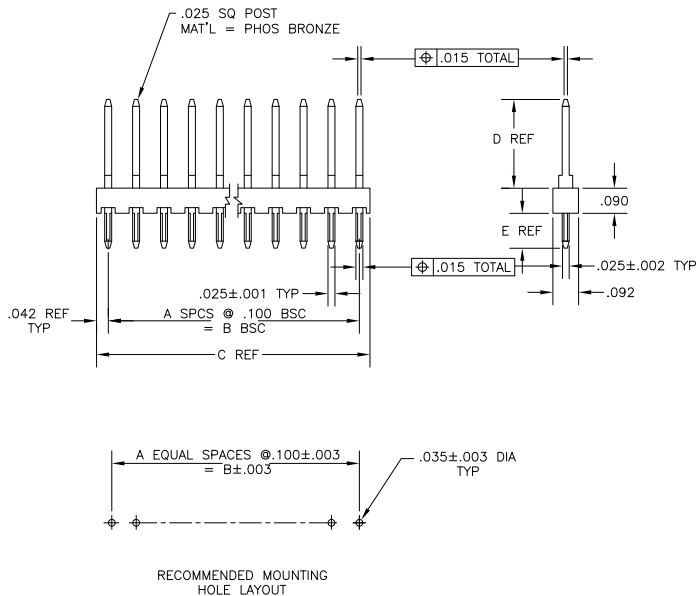
3

2

1

THIS DRAWING IS UNPUBLISHED. RELEASED FOR PUBLICATION. ALL RIGHTS RESERVED.

LOC		DIST		REVISIONS				DATE	BY	APP'D
AD	38	P	LTR		DESCRIPTION					
		K1			REVISED PER ECO-11-004917		11MAR11	RK	HMR	



OBSOLETE	△	.125	.318	.184	.100	1	2	4-87348-3
OBSOLETE	△			4.840	4.000	40	40	4-
OBSOLETE				4.840	4.000	40	40	-1
OBSOLETE				3.984	3.900	39	40	4-
OBSOLETE				3.884	3.800	38	39	3-
OBSOLETE				3.784	3.700	37	38	3-
OBSOLETE				3.684	3.600	36	37	3-
OBSOLETE				3.584	3.500	35	36	3-
OBSOLETE	△			3.484	3.400	34	35	3-
SUPERCEDED BY 3-103321-5	△			3.484	3.400	34	35	-5
OBSOLETE				3.384	3.300	33	34	3-
OBSOLETE				3.284	3.200	32	33	3-
OBSOLETE				3.184	3.100	31	32	3-
SUPERCEDED BY 3-103321-1				3.840	3.000	30	31	3-
SUPERCEDED BY 3-103321-0				2.884	2.900	29	30	3-
SUPERCEDED BY 2-103321-9				2.884	2.800	28	29	2-
OBSOLETE				2.784	2.700	27	28	2-
OBSOLETE				2.684	2.600	26	27	2-
SUPERCEDED BY 2-103321-6				2.584	2.500	25	26	2-
SUPERCEDED BY 2-103321-5				2.484	2.400	24	25	2-
SUPERCEDED BY 2-103321-4				2.384	2.300	23	24	2-
OBSOLETE				2.284	2.200	22	23	2-
SUPERCEDED BY 2-103321-2				2.100	2.100	21	22	2-
OBSOLETE				2.840	2.000	20	21	2-
OBSOLETE	△			1.984	1.900	19	20	2-
OBSOLETE	△			1.884	1.800	18	19	1-
SUPERCEDED BY 1-103321-8				1.784	1.700	17	18	1-
SUPERCEDED BY 1-103321-7				1.684	1.600	16	17	1-
SUPERCEDED BY 1-103321-6				1.584	1.500	15	16	1-
SUPERCEDED BY 1-103321-5				1.484	1.400	14	15	1-
				1.384	1.300	13	14	1-
SUPERCEDED BY 1-103321-3				1.284	1.200	12	13	1-
				1.184	1.100	11	12	1-
SUPERCEDED BY 1-103321-1				1.840	1.000	10	11	1-
				.984	.900	9	10	1-
SUPERCEDED BY 103321-9				.884	.800	8	9	-9
				.784	.700	7	8	-8
SUPERCEDED BY 103321-7				.684	.600	6	7	-7
				.584	.500	5	6	-6
				.484	.400	4	5	-5
				.384	.300	3	4	-4
				.284	.200	2	3	-3
				.184	.100	1	2	-2
△		.125	.318	.084	0	0	1	87348-1

SEE SHEET 2 FOR ADDITIONAL LEAD FREE PART NUMBERS

- TRUE POSITION TOLERANCE OF POST TIPS APPLIES WHEN HEADERS ARE HELD FLAT AGAINST PRINTED CIRCUIT BOARD.
- .000100-.000200 BRIGHT TIN-LEAD OVER .000050 NICKEL.
- .000100-.000200 BRIGHT TIN OVER .000050 NICKEL.
- .000100-.000200 MATTE TIN OVER .000050 NICKEL.
- OBSOLETE PARTS: OBSOLETE CIS STREAMLINING PER D.RENAUD/D.SINISI

THIS DRAWING IS A CONTROLLED DOCUMENT.			DATE	6-99
			BY	K. HELM
			CHK	6-99
			DR	R. FEIDT
			APP'D	6-99
			NAME	R. FEIDT
			PRODUCT SPEC	
			APPLICATION SPEC	
			SIZE	CAGE CODE
			WEIGHT	DRAWING NO
				A2 00779 C-87348
MATERIAL: FINISH: SEE TABLE			SCALE	4:1
			SHEET	1 of 2
			REV	K1
			CUSTOMER DRAWING	
			TE Connectivity	
			ASSEMBLY, MOD II, HEADER, SINGLE ROW, .100 C/L, VERTICAL, .025 SQ POSTS	
			RESTRICTED TO: --	

1471-9 (3/11)

87348

A

1

4

3

2

1

THIS DRAWING IS UNPUBLISHED. RELEASED FOR PUBLICATION
 © COPYRIGHT - By - ALL RIGHTS RESERVED.

LOC	DIST	REVISIONS				
P	LTR	DESCRIPTION	DATE	BY	APPD	
AD	38	SEE SHEET 1	-	-	-	

	A	.125	.318	3.984	3.900	.39	.40	9-87348	-0
△ OBSOLETE				3.584	3.500	35	36	8-	-6
△ OBSOLETE				1.984	1.900	19	20	7-	-0
				1.384	1.300	13	14	6-	-4
△ OBSOLETE				1.184	1.100	11	12	6-	-2
				1.840	1.000	10	11	6-	-1
				.984	.900	9	10	6-	-0
				.784	.700	7	8	5-	-8
				.484	.400	4	5	5-	-5
				.584	.500	5	6	5-	-6
				.384	.300	3	4	5-	-4
				.284	.200	2	3	5-	-3
				.184	.100	1	2	5-	-2
				.125	.084	0	1	5-	-1
				.125	.318	.084	0	0	0
FINISH	E	D	C	B	A	NO OF POS		ASSEMBLY PART NUMBER	

THIS DRAWING IS A CONTROLLED DOCUMENT.				BY K. HELM 6-99	 TE Connectivity ASSEMBLY, MOD II, HEADER, SINGLE ROW, .100 C/L, VERTICAL, .025 SQ POSTS
DIMENSIONS: INCHES				CHK R. FEJDT 6-99	
TOLERANCES UNLESS OTHERWISE SPECIFIED				APPD R. FEJDT 6-99	
0 PLC ± .005 1 PLC ± .005 2 PLC ± .005 3 PLC ± .005 4 PLC ± .005 ANGLES ± .005				NAME	
MATERIAL				APPLICATION SPEC	SIZE CASE CODE DRAWING NO
FINISH				WEIGHT	A2 00779 C-87348
SEE TABLE				CUSTOMER DRAWING	RESTRICTED TO
				SCALE 4:1	SHEET 2 of 2
				REV K1	

1471-9 (3/11)