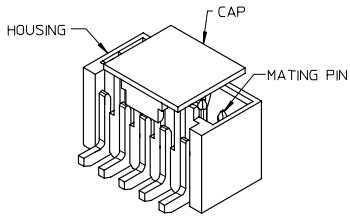
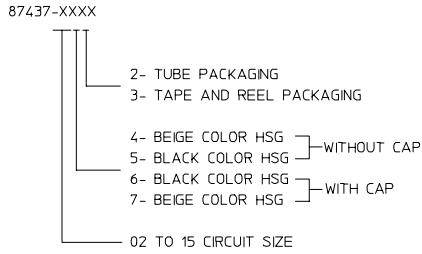


- NOTES:
- MATERIAL:
HOUSING: NYLON, GLASS FILLED, UL94 V-0,
COLOR - SEE TABLE.
CAP: NYLON, GLASS FILLED, UL94V-0
COLOR: BEIGE.
PINS: BRASS ALLOY, C26000, P/N87437-8083.
 - PLATING: 2.54µM. MIN. TIN OVER 1.27µM MIN. NICKEL.
 - DRAWING SHOWS PLUG WITH 5 CIRCUITS.
 - HEADER TO BE USED WITH CRIMP HOUSING, P/N 87439 AND CRIMP TERMINAL, P/N 87421.
 - PARTS TO BE PACKED IN MOISTURE BAG.

ADD MOIST BAG NOTE EC NO: S2007-1049 DRW:SKANG CHK:ATSEE APPR:HLONG 2007/06/22 2007/06/22 2007/06/22	QUALITY SYMBOLS ▽=0 ▽=0	GENERAL TOLERANCES (UNLESS SPECIFIED)		DIMENSION STYLE MM ONLY		SCALE NTS	DESIGN UNITS METRIC	THIRD ANGLE PROJECTION	
		4 PLACES ± --- ± ---	DRAWN BY KCLING	DATE 1994/04/08	TITLE 1.50MM PITCH, W-T-B HEADER, VERTICAL, SMT				
		3 PLACES ± --- ± ---	CHECKED BY SKTOH	DATE 1994/04/21					
		2 PLACES ± 0.20 ± ---	APPROVED BY RWONG	DATE 1994/04/21	MATERIAL NO.		DOCUMENT NO.	SHEET NO.	
1 PLACE ± --- ± ---	DRAFT WHERE APPLICABLE MUST REMAIN WITHIN DIMENSIONS		SEE TABLE		SD-87437-***31		1 OF 4		
ANGULAR ± 3 °		THIS DRAWING CONTAINS INFORMATION THAT IS PROPRIETARY TO MOLEX INCORPORATED AND SHOULD NOT BE USED WITHOUT WRITTEN PERMISSION							

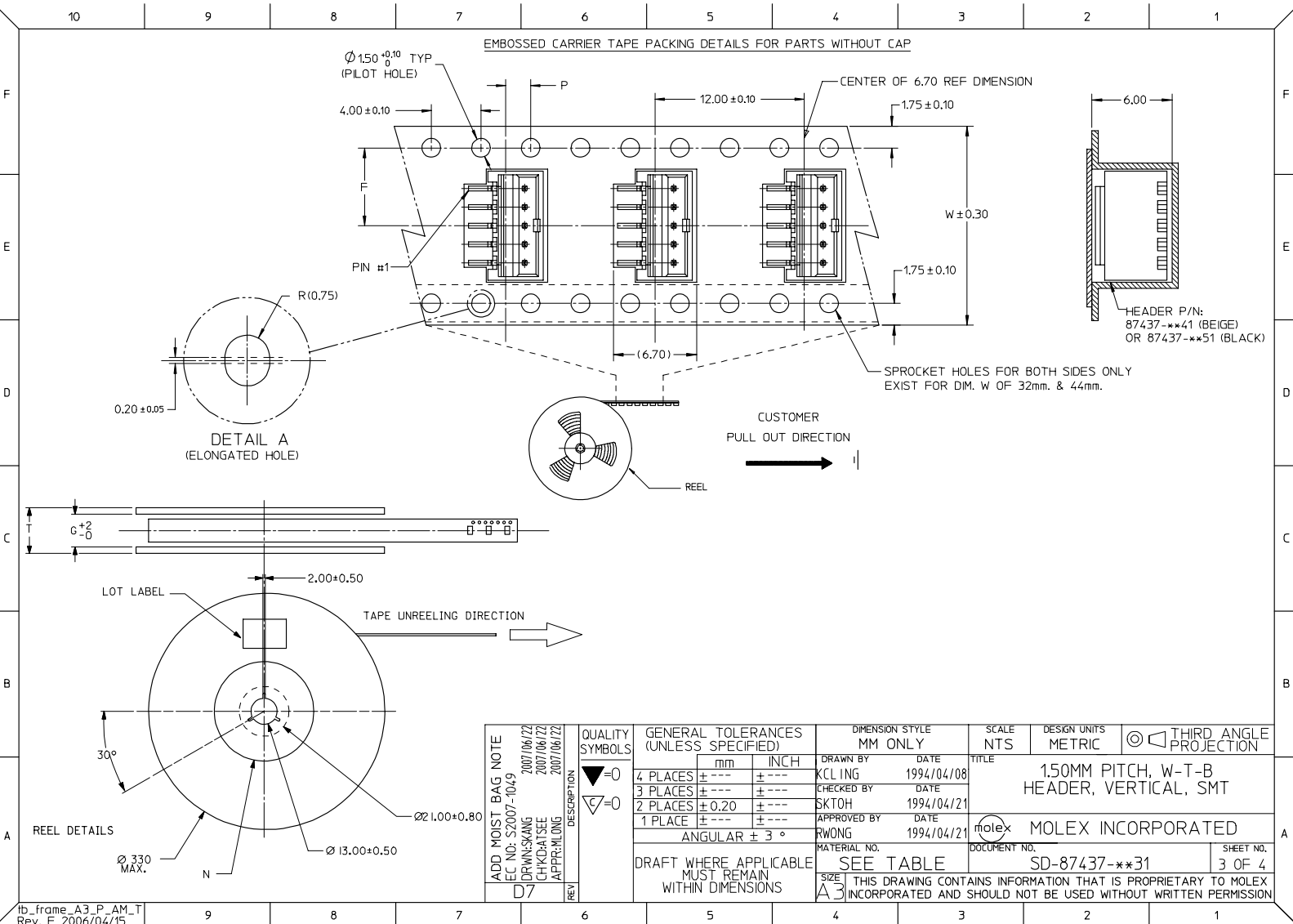


PART NUMBER ASSIGNMENT



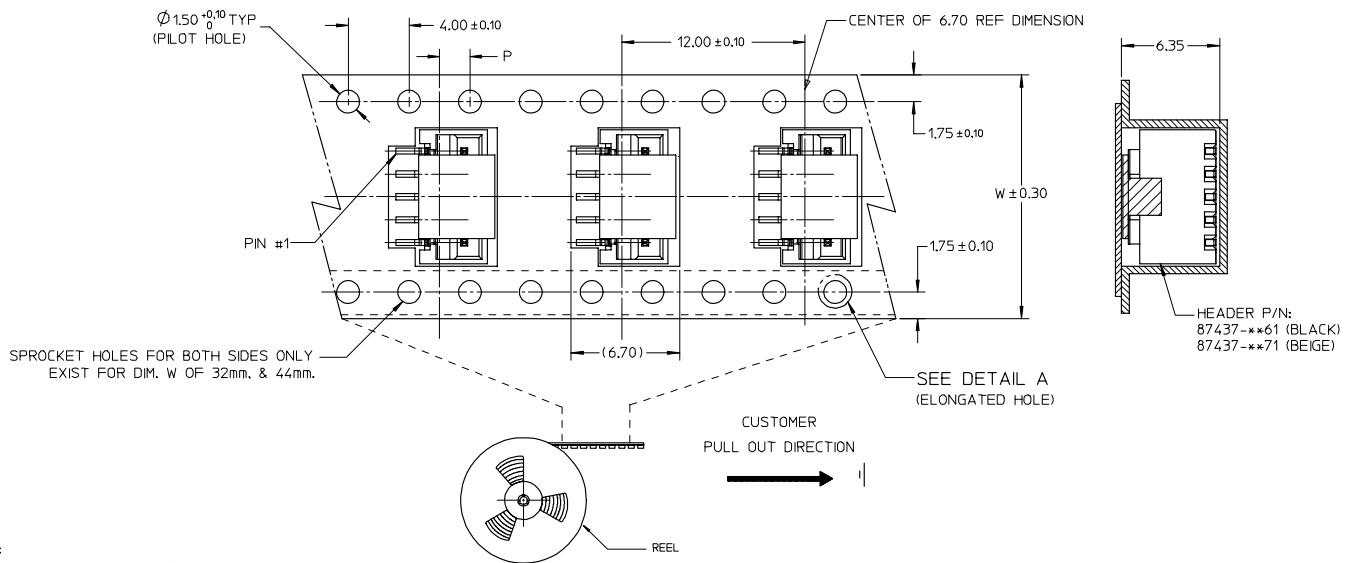
CIRCUIT SIZE	A	B	C	D	E
02	1.50	3.30	3.70	4.30	1.70
03	3.00	4.80	5.20	5.80	3.20
04	4.50	6.30	6.70	7.30	4.70
05	6.00	7.80	8.20	8.80	6.20
06	7.50	9.30	9.70	10.30	7.70
07	9.00	10.80	11.20	11.80	9.20
08	10.50	12.30	12.70	13.30	10.70
09	12.00	13.80	14.20	14.80	12.20
10	13.50	15.30	15.70	16.30	13.70
11	15.00	16.80	17.20	17.80	15.20
12	16.50	18.30	18.70	19.30	16.70
13	18.00	19.80	20.20	20.80	18.20
14	19.50	21.30	21.70	22.30	19.70
15	21.00	22.80	23.20	23.80	21.20

ADD MOIST BAG NOTE EC NO: S2007-1049 DRW:SKANG CHK:KATSEE APPR:HLONG 2007/06/22 2007/06/22 2007/06/22	QUALITY SYMBOLS	GENERAL TOLERANCES (UNLESS SPECIFIED)	DIMENSION STYLE MM ONLY	SCALE NTS	DESIGN UNITS METRIC	THIRD ANGLE PROJECTION																														
	$\nabla=0$ $\nabla=0$	<table border="1"> <tr><th></th><th>mm</th><th>INCH</th></tr> <tr><td>4 PLACES</td><td>± .005</td><td>± .0008</td></tr> <tr><td>3 PLACES</td><td>± .008</td><td>± .0010</td></tr> <tr><td>2 PLACES</td><td>± 0.020</td><td>± .0040</td></tr> <tr><td>1 PLACE</td><td>± .050</td><td>± .0050</td></tr> <tr><td colspan="3">ANGULAR ± 3 °</td></tr> </table>		mm	INCH	4 PLACES	± .005	± .0008	3 PLACES	± .008	± .0010	2 PLACES	± 0.020	± .0040	1 PLACE	± .050	± .0050	ANGULAR ± 3 °			<table border="1"> <tr><td>DRAWN BY</td><td>DATE</td></tr> <tr><td>KCLING</td><td>1994/04/08</td></tr> <tr><td>CHECKED BY</td><td>DATE</td></tr> <tr><td>SKTOH</td><td>1994/04/21</td></tr> <tr><td>APPROVED BY</td><td>DATE</td></tr> <tr><td>RWONG</td><td>1994/04/21</td></tr> </table>	DRAWN BY	DATE	KCLING	1994/04/08	CHECKED BY	DATE	SKTOH	1994/04/21	APPROVED BY	DATE	RWONG	1994/04/21	TITLE	1.50MM PITCH, W-T-B HEADER, VERTICAL, SMT	
		mm	INCH																																	
	4 PLACES	± .005	± .0008																																	
3 PLACES	± .008	± .0010																																		
2 PLACES	± 0.020	± .0040																																		
1 PLACE	± .050	± .0050																																		
ANGULAR ± 3 °																																				
DRAWN BY	DATE																																			
KCLING	1994/04/08																																			
CHECKED BY	DATE																																			
SKTOH	1994/04/21																																			
APPROVED BY	DATE																																			
RWONG	1994/04/21																																			
REV D7	DESCRIPTION	DRAFT WHERE APPLICABLE MUST REMAIN WITHIN DIMENSIONS	SEE TABLE	MATERIAL NO.	DOCUMENT NO.	SHEET NO.																														
			SIZE A3	MOLEX INCORPORATED		2 OF 4																														
THIS DRAWING CONTAINS INFORMATION THAT IS PROPRIETARY TO MOLEX INCORPORATED AND SHOULD NOT BE USED WITHOUT WRITTEN PERMISSION																																				



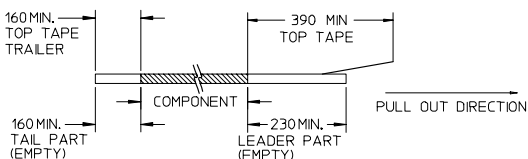
tb_frame_A3_P_AM_T
Rev. E 2006/04/15

EMBOSSED CARRIER TAPE PACKING DETAILS FOR PARTS WITH CAP

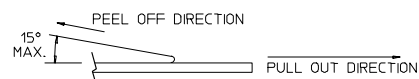


NOTES:

1. LEADER AND TRAILER TAPE



2. PEELING OFF FORCE OF THE TOP TAPE: 20-80gf. (PEELING DIRECTION AS SHOWN IN FOLLOWING FIGURE)



- 3. THE TAPE IS TREATED FOR ANTI-STATIC.
- 4. PACKAGING STANDARD IS AS PER EIA-481.
- 5. TAPE & REEL QUANTITY = 1000PCS/REEL (WITHOUT CAP)
TAPE & REEL QUANTITY = 900PCS/REEL (WITH CAP)

15	44	20.20±0.15	100	44.40	50.40	2.00±0.15
11, 12, 13, 14	32	14.20±0.10	100	32.40	38.40	2.00±0.10
7, 8, 9, 10	24	11.50±0.10	100	24.40	30.40	2.00±0.10
2, 3, 4, 5, 6	16	7.50±0.10	100	16.40	22.40	2.00±0.10
CIRCUIT SIZE	W	F	N	G	T MAX	P

ADD MOIST BAG NOTE EC NO. S2007-1049 DRW:SKANG CHK:KATSEE APPR:HLONG 2007/06/22 2007/06/22 2007/06/22	QUALITY SYMBOLS ▽=0 ▽=0	GENERAL TOLERANCES (UNLESS SPECIFIED)		DIMENSION STYLE MM ONLY		SCALE NTS	DESIGN UNITS METRIC	THIRD ANGLE PROJECTION		
		4 PLACES ± --- ± ---	3 PLACES ± --- ± ---	2 PLACES ± 0.20 ± ---	1 PLACE ± --- ± ---	ANGULAR ± 3 °	DRAWN BY KCLING	DATE 1994/04/08	TITLE 1.50MM PITCH, W-T-B HEADER, VERTICAL, SMT	
		DRAFT WHERE APPLICABLE MUST REMAIN WITHIN DIMENSIONS		SEE TABLE	MATERIAL NO.	DOCUMENT NO.	SHEET NO.			
				SIZE A3	THIS DRAWING CONTAINS INFORMATION THAT IS PROPRIETARY TO MOLEX INCORPORATED AND SHOULD NOT BE USED WITHOUT WRITTEN PERMISSION					