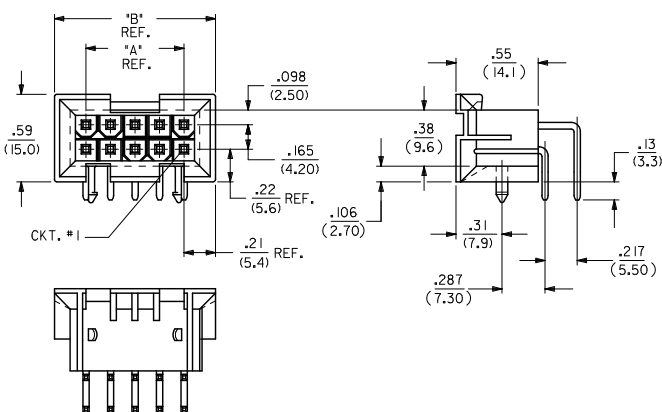


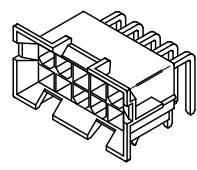
CIRCUIT SIZE	DIM. "A"	DIM. "B"
6	.331 (8.40)	.76 (19.2)
8	.496 (12.60)	.92 (23.4)
10	.661 (16.80)	1.09 (27.6)
12	.827 (21.00)	1.25 (31.8)
14	.992 (25.20)	1.42 (36.0)
16	1.157 (29.40)	1.58 (40.2)
18	1.323 (33.60)	1.75 (44.4)
20	1.488 (37.80)	1.91 (48.6)
22	1.654 (42.00)	2.08 (52.8)
24	1.819 (46.20)	2.24 (57.0)



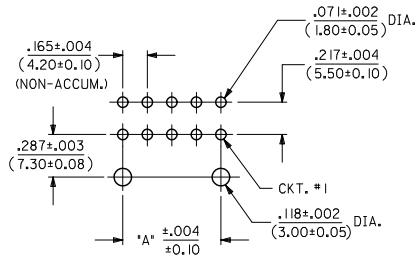
**NOTES:**

- MATERIAL: HOUSING: "A" = NYLON 6/6, U.L. 94V-2, COLOR: NATURAL. "B" = NYLON 6/6, U.L. 94V-0, COLOR: NATURAL. TERMINAL: BRASS ALLOY 260.
- TERMINAL PLATING:
  - .000100/(.00254) MIN. BRIGHT TIN OVER .000050/(.00127) MIN. NICKEL OVERALL.
  - .000030/(.00076) MIN. GOLD OVER .000050/(.00127) MIN. NICKEL OVERALL.
  - .000100/(.00254) MIN. MATTE TIN OVER .000050/(.00127) MIN. NICKEL OVERALL.
  - .000030/(.00076) MIN. GOLD AND .000100/(.00254) MIN. MATTE TIN OVER .000050/(.00127) MIN. NICKEL OVERALL.

\*THE PRIMARY SHIPPING CARTON WILL BE LABELED "COMPLIANT TO ROHS DIRECTIVE 2002/95/EC AND ELV ANNEX II OF DIRECTIVE 2000/53/EC." CARTONS WITHOUT THIS LABEL MAY CONTAIN PRODUCT WITH TIN-LEAD PLATING.
- PRODUCT SPECIFICATION AND PROCESSING PARAMETERS: SEE PS-5556-002
- PACKAGING SPECIFICATION: PK-42404-002.
- 4-24 CKT. PARTS MATE WITH MINI-FIT JR. RECEPTACLES #5557, #42385 AND #42474. 2 CKT. PART MATES WITH #42385 AND #42474 ONLY.
- PART ALLOWS FOR UP TO .100/(2.54) MISALIGNMENT WITH MATING RECEPTACLE IN ANY DIRECTION. SEE MATING CONNECTOR DRAWINGS FOR SPECIFIC ALLOWANCES.
- CONNECTOR ASSEMBLIES ARE NOT TO BE MATED OR UNMATED WHILE CIRCUITS ARE LIVE.
- A MAXIMUM TOLERANCE OF .050/(1.27) ALLOWS FOR 2 POINTS OF ELECTRICAL CONTACT. A MAXIMUM TOLERANCE OF .020/(.51) ALLOWS FOR 4 POINTS OF CONTACT.
- DISCOLORATION IN THE BANDOLIER CARRIER AREA OF THE PIN IS INHERENT TO THE PLATING PROCESS AND IS DUE TO THE MASKING EFFECT OF THE CARRIER. THIS DISCOLORATION IS IN A NON-FUNCTIONAL AREA OF THE PIN AND WILL NOT AFFECT THE PERFORMANCE OF THE HEADER ASSEMBLY.
- PART IS NOT DESIGNED FOR CURRENT SHARING.
- PART IS NOT INTENDED TO PROVIDE ANY ALIGNMENT OF CUSTOMER COMPONENTS OR MODULES, SUCH AS POWER SUPPLIES AND CHASSIS.
- PARTS CONFORM TO CLASS 'B' REQUIREMENTS OF COSMETIC SPECIFICATION PS-45499-002.\*

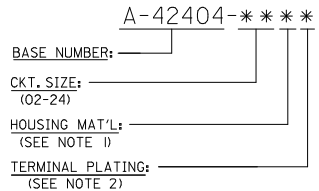


A-42404-\*\*\*\*



RECOMMENDED HOLE LAYOUT FOR .070/(1.78) MAX. THICK P.C. BOARD VIEWED FROM COMPONENT SIDE

**LEGEND:**

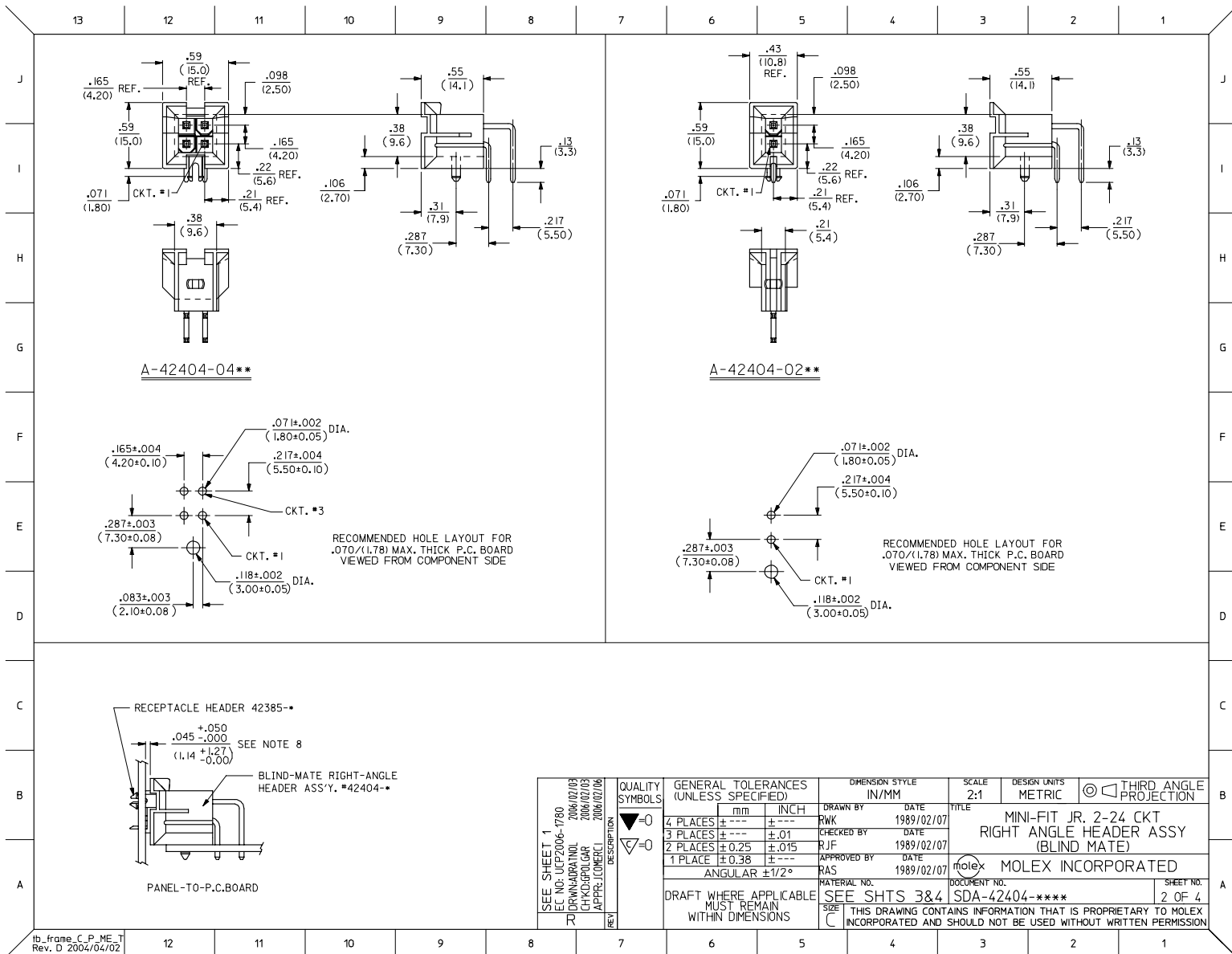


Part No.	Part Description	Material	Plating
--B2, --B4	42474--2 I, 5556-PBGS*P	PHOS. BRZ.	GOLD
--A2, --A4	42474--1 I, 5556-PBGS*P	PHOS. BRZ.	TIN
--B1, --B3	42474--2 I, 5556-PBS*P	PHOS. BRZ.	GOLD
--A1, --A3	42474--1 I, 5556-PBS*P	PHOS. BRZ.	TIN
--B2, --B4	42474--2 I, 5556-GS*P	BRASS	GOLD
--A2, --A4	42474--1 I, 5556-GS*P	BRASS	TIN
--B1, --B3	42474--2 I, 5556-S*P	BRASS	GOLD
--A1, --A3	42474--1 I, 5556-S*P	BRASS	TIN
--B2, --B4	A-42385--D2	PHOS. BRZ.	GOLD
--A2, --A4	A-42385--C2	PHOS. BRZ.	TIN
--B1, --B3	A-42385--D1	PHOS. BRZ.	GOLD
--A1, --A3	A-42385--C1	PHOS. BRZ.	TIN
--B2, --B4	A-42385--B2	BRASS	GOLD
--A2, --A4	A-42385--A2	BRASS	TIN
--B1, --B3	A-42385--B1	BRASS	GOLD
--A1, --A3	A-42385--A1	BRASS	TIN

Part No.	Part Description	HSG. MAT'L.	TERM. MAT'L.	PLATING
R.A. HEADER A-42404	MATING CONNECTOR	HSG. MAT'L.	TERM. MAT'L.	PLATING
		MATING CONNECTOR FEATURES		

<b>REVISE NOTES</b> ECC NO. UCP2010-0864 DRWN: JAGUILAR 2010/01/18 CHKD: BELL 2010/01/06 APPR: SMITH 2010/03/16	<b>QUALITY SYMBOLS</b> ▽=0 ▽=0	<b>GENERAL TOLERANCES (UNLESS SPECIFIED):</b>		<b>DIMENSION STYLE</b> IN/MM		<b>SCALE</b> 1:1	<b>DESIGN UNITS</b> METRIC	THIRD ANGLE PROJECTION	
		4 PLACES ±.25 ±.010	mm	INCH	DRAWN BY	DATE	TITLE		
		3 PLACES ±.38 ±.015			CHKD BY	DATE	MINI-FIT JR. 2-24 CKT RIGHT ANGLE HEADER ASSY (BLIND MATE)		
		1 PLACE ±.38 ±.015			APPR BY	DATE	MOLEX INCORPORATED		
DRAFT WHERE APPLICABLE MUST REMAIN WITHIN DIMENSIONS		ANGULAR ±1/2°		MATERIAL NO. SEE SHTS 3&4		DOCUMENT NO. SDA-42404-****		SHEET NO. 1 OF 4	

4	R
3	R2
2	R
1	R2
SHT REV.	



SEE SHEET 1 EC NO. UCP2006-1780 DRAWN BY: JCP CHECKED BY: JCP APPROVED BY: JCP DATE: 2006/02/03	QUALITY SYMBOLS ▽=0 ▽=0	GENERAL TOLERANCES (UNLESS SPECIFIED) 4 PLACES ±.005 3 PLACES ±.01 2 PLACES ±.025 1 PLACE ±.038 ANGULAR ±1/2°	DIMENSION STYLE IN/MM	SCALE 2:1	DESIGN UNITS METRIC	THIRD ANGLE PROJECTION
	DRAWN BY: RWK CHECKED BY: RJK APPROVED BY: RAS DATE: 1989/02/07	TITLE MINI-FIT JR. 2-24 CKT RIGHT ANGLE HEADER ASSY (BLIND MATE)	MATERIAL NO. SEE SHTS 3&4	DOCUMENT NO. SDA-42404-*****	SHEET NO. 2 OF 4	MOLEX INCORPORATED
DRAFT WHERE APPLICABLE MUST REMAIN WITHIN DIMENSIONS		THIS DRAWING CONTAINS INFORMATION THAT IS PROPRIETARY TO MOLEX INCORPORATED AND SHOULD NOT BE USED WITHOUT WRITTEN PERMISSION				

