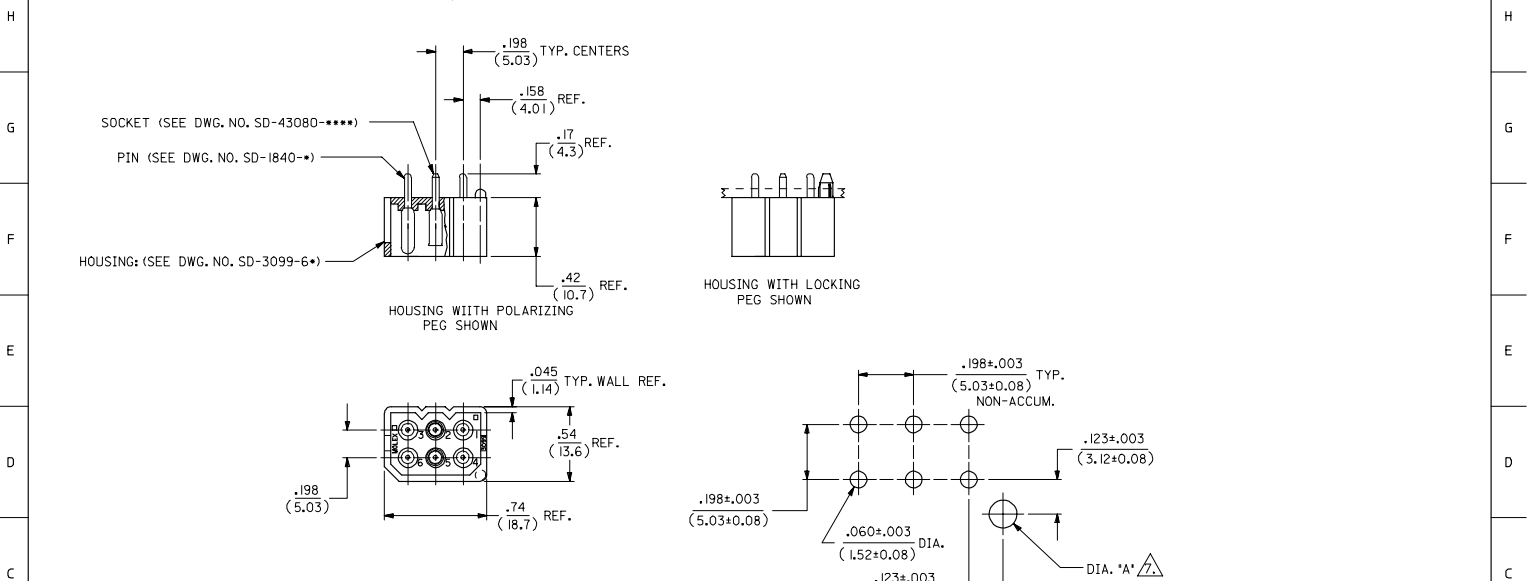


ORDER NO.	ENG. NUMBER	TERMINAL LOCATION (SEE CHART)	MAT'L	PEG TYPE	PLATING (SEE CHART)	DIA "A"	TERMINAL LOCATION CHART (M=MALE, F=FEMALE, B=BLANK)						PLATING CODE	PLATING
							CIRCUIT LOCATION							
10-18-1061	A-3099-P6A	A	V-0	POLARIZING	B	.100±.005 (2.54±0.13)	A	M	M	M	M	M	A	UNPLATED PINS ONLY: OVERALL TIN: .000200/(0.00508) MIN. OVER COPPER: .000100/(0.00254) MIN. SOCKETS ONLY: OVERALL TIN: .000050/(0.00127) MIN. OVER NICKEL: .000050/(0.00127) MIN.
10-18-1063	A-3099-P6B	B	V-0	POLARIZING	B		B	M	F	M	M	F	M	
38-00-0589	A-3099-P6C	C	V-0	POLARIZING	B		C	F	M	M	M	F	M	
38-00-0590	A-3099-P6D	D	V-0	POLARIZING	B		D	M	M	M	F	M	M	
10-18-1064	A-3099-0605	E	V-0	POLARIZING	B		E	M	M	M	M	M	F	
10-18-1065	A-3099-0607	F	V-0	POLARIZING	B		F	F	M	M	M	M	M	
				LOCKING	B	.103 +.003/-.002 (2.62 + 0.08/-0.05)								



- MATERIAL:
HOUSING: UNFILLED POLYESTER, 94V-0, COLOR-BLACK
PIN TERMINAL: CARTRIDGE BRASS
SOCKET TERMINAL: PHOSPHOR BRONZE
- FINISH: SEE TABLE
- PRODUCT SPECIFICATION: N/A
- PACKAGING SPECIFICATION: N/A
- MATES WITH MOLEX 1490 RECEPTACLES AND .093/(2.36) SERIES TERMINALS
- ASSEMBLIES TO BE MOUNTED ON SUPPORTED EDGE OF P.C. BOARD
- ONLY REQUIRED WHEN USING PARTS WITH OPTIONAL POLARIZING OR LOCKING PEGS

QUALITY SYMBOLS		GENERAL TOLERANCES (UNLESS SPECIFIED)		DIMENSION STYLE		SCALE	DESIGN UNITS	THIRD ANGLE PROJECTION	
SYMBOL	DESCRIPTION	mm	INCH	IN/MM	DATE	2:1	INCH		
▽=0		4 PLACES ±.005	±.005	KBW	1989/05/25	CONNECTOR ASSEMBLY ENCLOSED WAFER 6 CIRCUIT			
▽=0		3 PLACES ±.025	±.010	RW	1989/05/25	MOLEX MOLEX INCORPORATED			
		2 PLACES ±0.36	±.014	RAS	1989/05/25	MATERIAL NO. SDA-3099-#6**			
		1 PLACE ±0.36	±.014			SHEET NO. 1 OF 1			
		ANGULAR ±1/2°		DRAWN BY DATE		THIS DRAWING CONTAINS INFORMATION THAT IS PROPRIETARY TO MOLEX INCORPORATED AND SHOULD NOT BE USED WITHOUT WRITTEN PERMISSION			
		DRAFT WHERE APPLICABLE MUST REMAIN WITHIN DIMENSIONS		CHECKED BY DATE					
				APPROVED BY DATE					

ib_frame_C_P_ME_T
Rev. D 2004/04/02