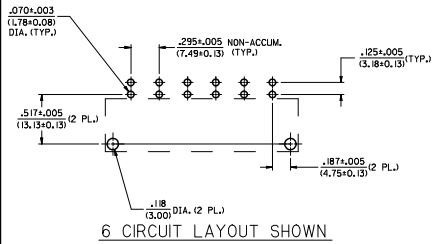


SEE SHEET 5 AND 6 FOR ITEM NUMBER CHART

**RECOMMENDED P.C. BOARD LAYOUT FOR RIGHT ANGLE HEADERS**

SCALE 2:1



6 CIRCUIT LAYOUT SHOWN

**NOTES:**

- INSULATOR MATERIAL (SEE CHART)  
A = 30% GLASS-FILLED 46 NYLON, 94V-0, COLOR: BLACK  
TERMINAL MATERIAL: C26000 BRASS
- TERMINAL FINISH: 35 MICRON (0.88 MICROMETER) MINIMUM TIN OVER  
20 MICRON (0.50 MICROMETER) MINIMUM COPPER.  
\* THE PRIMARY SHIPPING CARTON WILL BE LABELED  
"COMPLIANT TO RoHS DIRECTIVE 2002/95/EC  
AND ELY ANNEX II OF DIRECTIVE 2000/53/EC."  
CARTONS WITHOUT THIS LABEL MAY CONTAIN  
PRODUCT WITH TIN-LEAD IN THE PC TAILS.
- PRODUCT SPECIFICATION: PSX-44441-9999.
- PACKAGING: SEE CHART.
- THESE HEADERS MATE WITH 43179, 43335, OR 44441 RECEPTACLE HOUSINGS.
- SEE SHEETS 1, 2 AND 3 FOR VERTICAL HEADER ASSEMBLIES AND THEIR RESPECTIVE PART NUMBERS.
- SEE SHEETS 4, 5 AND 6 FOR RIGHT ANGLE HEADER ASSEMBLIES AND THEIR RESPECTIVE PART NUMBERS.
- DIMENSIONS ARE FOR REFERENCE ONLY UNLESS INDICATED OTHERWISE.

SOLDER TAIL	DIM. 'A' ±.011(0.28)
SHORT	.150(3.81)
LONG	.210(5.33)

BOARD LOCK	DIM. 'B' ±.004(0.10)
.062	.070(1.78)
.094	.102(2.59)
.125	.133(3.38)

REMOVE DIM. DIMS FROM DRAWING SYSTEMS (E2000/0105) CHYKDALIAG APPROV. 2006/01/05 REV. DESCRIPTION 2006/01/05	QUALITY SYMBOLS	GENERAL TOLERANCES (UNLESS SPECIFIED)	DIMENSION STYLE	SCALE	DESIGN UNITS	THIRD ANGLE PROJECTION	
	4 PLACES ±.005 3 PLACES ±.005 2 PLACES ±.013 ±.01 1 PLACE ±.025 ±.01	MIN INCH ±.005 ±.01 ±.01	IN/MM	IN/MM	3:1	INCH	<input checked="" type="checkbox"/> THIRD ANGLE PROJECTION <input type="checkbox"/> FIRST ANGLE PROJECTION
	DRAWN BY DATE DC 11/30/95 CHECKED BY DATE KBP 11/30/95 APPROVED BY DATE RAS 11/30/95 ANGULAR ±1/2°	MATERIAL NO. SEE CHART DRAFT WHERE APPLICABLE MUST REMAIN WITHIN DIMENSIONS	DRAWN BY DATE DC 11/30/95 CHECKED BY DATE KBP 11/30/95 APPROVED BY DATE RAS 11/30/95	DIMENSION STYLE IN/MM	SCALE 3:1	DESIGN UNITS INCH	THIRD ANGLE PROJECTION <input checked="" type="checkbox"/> THIRD ANGLE PROJECTION <input type="checkbox"/> FIRST ANGLE PROJECTION
	TITLE SABRE HEADER ASSY RT. ANGLE, 2-6 & 8 CIR. 125/(3.18)X.020/(0.51)	DOCUMENT NO. SDA-43160-XXXX	SHEET NO. 4 OF 6	MOLEX INCORPORATED	MOLEX INCORPORATED	MOLEX INCORPORATED	MOLEX INCORPORATED

RT. ANGLE HEADER ASSEMBLY ITEM NO.	PART CHARACTERISTICS FOR RIGHT ANGLE HEADER				PACKAGING SPECIFICATIONS
	CIRCUIT SIZE	HSG. MAT'L (SEE NOTE II)	SOLDER TAIL	BOARD LOCK	
43160-1102	2	A	SHORT	N/A	PK-43160-0010
43160-1302	2	A	LONG	N/A	PK-43789-001
43160-3102	2	A	SHORT	.062	PK-43789-001
43160-5102	2	A	SHORT	.094	PK-43789-001
43160-5302	2	A	LONG	.094	PK-43789-001
43160-7302	2	A	LONG	.125	PK-43789-001
43160-1103	3	A	SHORT	N/A	PK-43160-0010
43160-1303	3	A	LONG	N/A	PK-43789-001
43160-3103	3	A	SHORT	.062	PK-43789-001
43160-5103	3	A	SHORT	.094	PK-43789-001
43160-5303	3	A	LONG	.094	PK-43789-001
43160-7303	3	A	LONG	.125	PK-43789-001

RT. ANGLE HEADER ASSEMBLY ITEM NO.	PART CHARACTERISTICS FOR RIGHT ANGLE HEADER				PACKAGING SPECIFICATIONS
	CIRCUIT SIZE	HSG. MAT'L (SEE NOTE II)	SOLDER TAIL	BOARD LOCK	
43160-1104	4	A	SHORT	N/A	PK-43160-0010
43160-1304	4	A	LONG	N/A	PK-43789-001
43160-3104	4	A	SHORT	.062	PK-43789-001
43160-5104	4	A	SHORT	.094	PK-43789-001
43160-5304	4	A	LONG	.094	PK-43789-001
43160-7304	4	A	LONG	.125	PK-43789-001
43160-1105	5	A	SHORT	N/A	PK-43160-0010
43160-1305	5	A	LONG	N/A	PK-43789-001
43160-3105	5	A	SHORT	.062	PK-43789-001
43160-5105	5	A	SHORT	.094	PK-43789-001
43160-5305	5	A	LONG	.094	PK-43789-001
43160-7305	5	A	LONG	.125	PK-43789-001

RT. ANGLE HEADER ASSEMBLY ITEM NO.	PART CHARACTERISTICS FOR RIGHT ANGLE HEADER				PACKAGING SPECIFICATIONS
	CIRCUIT SIZE	HSG. MAT'L (SEE NOTE II)	SOLDER TAIL	BOARD LOCK	
43160-1106	6	A	SHORT	N/A	PK-43160-0010
43160-1306	6	A	LONG	N/A	PK-43789-001
43160-3106	6	A	SHORT	.062	PK-43789-001
43160-5106	6	A	SHORT	.094	PK-43789-001
43160-5306	6	A	LONG	.094	PK-43789-001
43160-7306	6	A	LONG	.125	PK-43789-001

REMOVE DIM. DIM. PINS SEE MOLEX DRAWING DRAWING NO. 2000/0105 CHECKED BY: CHIKOJALING APPROVED BY: CHIKOJALING	QUALITY SYMBOLS	GENERAL TOLERANCES (UNLESS SPECIFIED)	DIMENSION STYLE	SCALE	DESIGN UNITS	THIRD ANGLE PROJECTION	
	▽=0 ▽=0	4 PLACES ±.005 ±.005 3 PLACES ±.010 ±.010 2 PLACES ±.015 ±.015 1 PLACE ±.025 ±.025 ANGULAR ±1/2°	IN/MM INCH	DRAWN BY: DATE: 11/30/95 CHECKED BY: DATE: 11/30/95 APPROVED BY: DATE: 11/30/95	1:1	INCH	SABRE HEADER ASSY RT. ANGLE, 2-6 & 8 CIR. .125/(3.18)X.020/(0.51)
	MATERIAL NO. SEE CHART DRAFT WHERE APPLICABLE MUST REMAIN WITHIN DIMENSIONS	RAS	MOLEX INCORPORATED	DOCUMENT NO. SDA-43160-XXXX	SHEET NO. 5 OF 6	THIS DRAWING CONTAINS INFORMATION THAT IS PROPRIETARY TO MOLEX INCORPORATED AND SHOULD NOT BE USED WITHOUT WRITTEN PERMISSION	