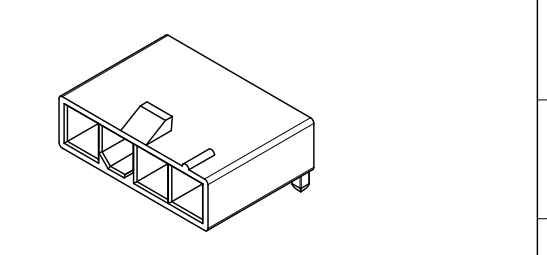
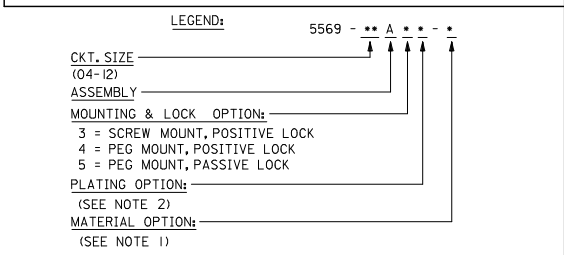
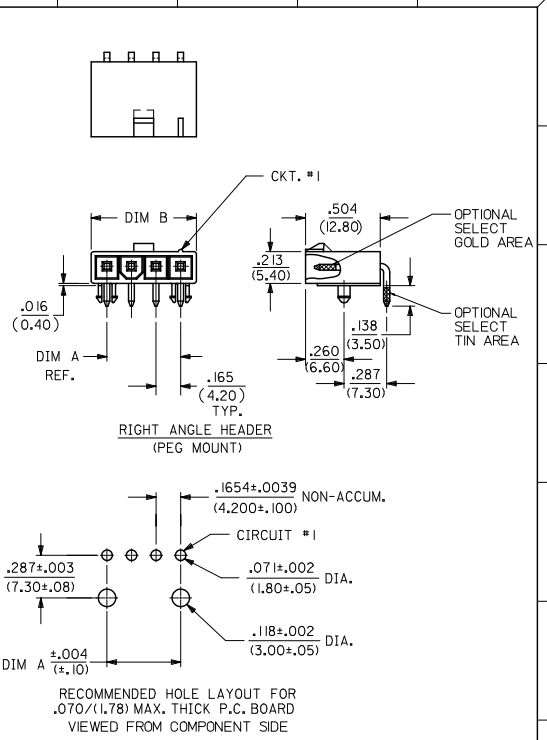
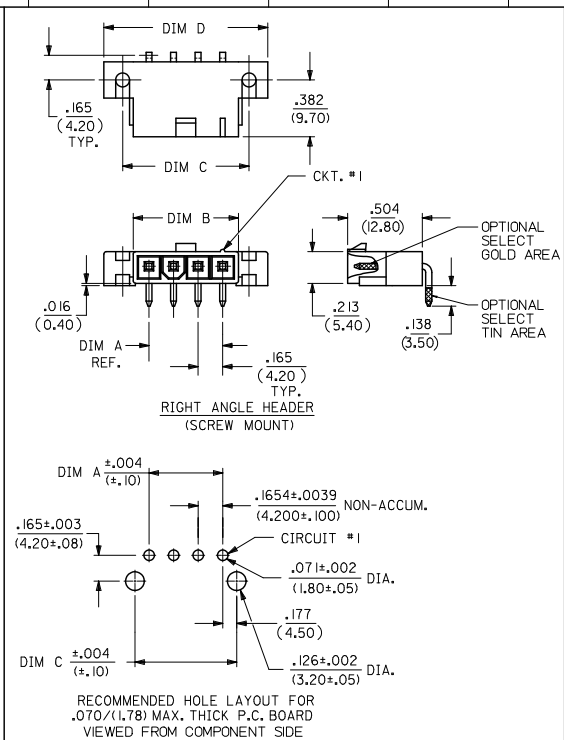


CKT SIZE	DIM A	DIM B	DIM C	DIM D
4	.496 (12.60)	.709 (18.00)	.850 (21.60)	1.102 (28.00)
5	.661 (16.80)	.874 (22.20)	1.016 (25.80)	1.268 (32.20)
6	.827 (21.00)	1.039 (26.40)	1.181 (30.00)	1.433 (36.40)
7	.992 (25.20)	1.205 (30.60)	1.346 (34.20)	1.598 (40.60)
8	1.157 (29.40)	1.370 (34.80)	1.512 (38.40)	1.764 (44.80)
9	1.323 (33.60)	1.535 (39.00)	1.677 (42.60)	1.929 (49.00)
10	1.488 (37.80)	1.701 (43.20)	1.843 (46.80)	2.094 (53.20)
11	1.654 (42.00)	1.866 (47.40)	2.008 (51.00)	2.260 (57.40)
12	1.819 (46.20)	2.031 (51.60)	2.173 (55.20)	2.425 (61.60)

- NOTES:
- HOUSING MATERIAL:
    - \*BLANK\* = NYLON 6/6, U.L. 94V-2, COLOR: NATURAL.
    - 210 = NYLON 6/6, U.L. 94V-0, COLOR: NATURAL.
    - BL = NYLON 6/6, U.L. 94V-2, COLOR: BLACK.
    - 400 = NYLON 6/6, U.L. 94V-0, COLOR: BLACK.
  - TERMINAL MATERIAL: BRASS, ALLOY 260.
  - TERMINAL PLATING:
    - \*BLANK\* - .000200/(.00508) MIN. TIN OVER .000100/(.00254) MIN. COPPER OVERALL.
    - G - .000030/(.00076) MIN. GOLD OVER .000050/(.00127) MIN. NICKEL OVERALL.
    - GS - .000030/(.00076) MIN. SELECT GOLD AND .000100/(.00127) MIN. SELECT MATTE TIN OVER .000050/(.00127) MIN. NICKEL OVERALL.
    - G2 - .000015/(.00038) MIN. GOLD OVER .000030/(.00076) MIN. NICKEL OVERALL.
    - GS2 - .00015/(.00038) MIN. SELECT GOLD AND .000100/(.00254) MIN. SELECT MATTE TIN OVER .000050/(.00127) MIN. NICKEL OVERALL.
    - G3 - .000050/(.00127) MIN. GOLD OVER .000050/(.00127) MIN. NICKEL OVERALL.
    - S - .000100/(.00254) MIN. BRIGHT TIN OVER .000050/(.00127) MIN. NICKEL OVERALL.
    - GS - .000030/(.00076) MIN. SELECT GOLD, .000100/(.00254) MIN. SELECT MATTE TIN OVER .000050/(.00127) MIN. NICKEL OVERALL.
    - RM - .000060/(.00152) MIN. REFLOWED MATTE TIN OVER .000050/(.00127) MIN. NICKEL OVERALL.
    - MS - .000100/(.00254) MIN. MATTE TIN OVER .000050/(.00127) MIN. NICKEL OVERALL.
  - PRODUCT SPECIFICATION: PS-5556-001
  - PACKAGING SPECIFICATION: BULK PACK PER PK-5569-002
  - PART MATES WITH MOLEX RECEPTACLE #5557.
  - PART IS DESIGNED FOR USE WITH 4 - 40 OR M3 SCREWS.
  - DISCOLORATION IN THE BANDOLIER CARRIER AREA OF THE PIN IS INHERENT TO THE PLATING PROCESS AND IS DUE TO THE MASKING EFFECT OF THE CARRIER. THIS DISCOLORATION IS IN A NON-FUNCTIONAL AREA OF THE PIN AND WILL NOT AFFECT THE PERFORMANCE OF THE HEADER ASSEMBLY.
  - CONNECTORS ARE NOT TO BE MATED OR UNMATED WHILE CIRCUIT ARE LIVE.
  - PARTS NOT DESIGNED FOR CURRENT SHARING.
  - PART CONFORMS TO CLASS "B" REQUIREMENTS OF COSMETIC SPECIFICATION PS-45499-002.



ADDED MS OPTION EC NO. UCP2011-2342 DRWN: JAGUILAR 2011/02/04 CHKD: BELL 2011/02/04 APPR: SMITH 2011/02/11	QUALITY SYMBOLS ▽=0 ▽=0 ▽=0	GENERAL TOLERANCES (UNLESS SPECIFIED)	DIMENSION STYLE IN/MM	SCALE 2:1	DESIGN UNITS METRIC	THIRD ANGLE PROJECTION
		4 PLACES ±.38 ±.38 3 PLACES ±.38 ±.38 2 PLACES ±.38 ±.38 1 PLACE ±.38 ±.38	mm INCH ±.38 ±.38 ±.015 ±.015	DRAWN BY KSS	DATE 2/14/89	TITLE RIGHT ANGLE HEADER ASSY (SINGLE ROW) (MINI-FIT JR. SERIES)
P6	REV	ANGULAR ± 3°	DRAFT WHERE APPLICABLE MUST REMAIN WITHIN DIMENSIONS	APPROVED BY RAS	DATE 2/14/89	MATERIAL NO. SDA-5569-NL*
			SEE CHARTS	DOCUMENT NO.		SHEET NO. 1 OF 4
THIS DRAWING CONTAINS INFORMATION THAT IS PROPRIETARY TO MOLEX INCORPORATED AND SHOULD NOT BE USED WITHOUT WRITTEN PERMISSION						

13		12		11		10		9		8		7		6		5		4		3		2		1	
E.D.P. NO.	ENG. NO.	CKT. SIZE	MOUNTING OPTION	LOCK OPTION	PLATING (SEE NOTE 2)	MAT'L. (SEE NOTE 1)																			
39-30-3041	5569-04A3	4	SCREWS	POSITIVE	TIN/COPPER	94V-2																			
39-30-3051	5569-05A3	5	SCREWS	POSITIVE	TIN/COPPER	94V-2																			
39-30-3061	5569-06A3	6	SCREWS	POSITIVE	TIN/COPPER	94V-2																			
39-30-3071	5569-07A3	7	SCREWS	POSITIVE	TIN/COPPER	94V-2																			
39-30-3081	5569-08A3	8	SCREWS	POSITIVE	TIN/COPPER	94V-2																			
39-30-3091	5569-09A3	9	SCREWS	POSITIVE	TIN/COPPER	94V-2																			
39-30-3101	5569-10A3	10	SCREWS	POSITIVE	TIN/COPPER	94V-2																			
39-30-3111	5569-11A3	11	SCREWS	POSITIVE	TIN/COPPER	94V-2																			
39-30-3121	5569-12A3	12	SCREWS	POSITIVE	TIN/COPPER	94V-2																			
39-30-3042	5569-04A3-210	4	SCREWS	POSITIVE	TIN/COPPER	94V-0																			
39-30-3052	5569-05A3-210	5	SCREWS	POSITIVE	TIN/COPPER	94V-0																			
39-30-3062	5569-06A3-210	6	SCREWS	POSITIVE	TIN/COPPER	94V-0																			
39-30-3072	5569-07A3-210	7	SCREWS	POSITIVE	TIN/COPPER	94V-0																			
39-30-3082	5569-08A3-210	8	SCREWS	POSITIVE	TIN/COPPER	94V-0																			
39-30-3092	5569-09A3-210	9	SCREWS	POSITIVE	TIN/COPPER	94V-0																			
39-30-3102	5569-10A3-210	10	SCREWS	POSITIVE	TIN/COPPER	94V-0																			
39-30-3112	5569-11A3-210	11	SCREWS	POSITIVE	TIN/COPPER	94V-0																			
39-30-3122	5569-12A3-210	12	SCREWS	POSITIVE	TIN/COPPER	94V-0																			
39-30-3045	5569-04A4	4	PEGS	POSITIVE	TIN/COPPER	94V-2																			
39-30-3055	5569-05A4	5	PEGS	POSITIVE	TIN/COPPER	94V-2																			
39-30-3065	5569-06A4	6	PEGS	POSITIVE	TIN/COPPER	94V-2																			
39-30-3075	5569-07A4	7	PEGS	POSITIVE	TIN/COPPER	94V-2																			
39-30-3085	5569-08A4	8	PEGS	POSITIVE	TIN/COPPER	94V-2																			
39-30-3095	5569-09A4	9	PEGS	POSITIVE	TIN/COPPER	94V-2																			
39-30-3105	5569-10A4	10	PEGS	POSITIVE	TIN/COPPER	94V-2																			
39-30-3115	5569-11A4	11	PEGS	POSITIVE	TIN/COPPER	94V-2																			
39-30-3125	5569-12A4	12	PEGS	POSITIVE	TIN/COPPER	94V-2																			
39-30-3046	5569-04A4-210	4	PEGS	POSITIVE	TIN/COPPER	94V-0																			
39-30-3056	5569-05A4-210	5	PEGS	POSITIVE	TIN/COPPER	94V-0																			
39-30-3066	5569-06A4-210	6	PEGS	POSITIVE	TIN/COPPER	94V-0																			
39-30-3076	5569-07A4-210	7	PEGS	POSITIVE	TIN/COPPER	94V-0																			
39-30-3086	5569-08A4-210	8	PEGS	POSITIVE	TIN/COPPER	94V-0																			
39-30-3096	5569-09A4-210	9	PEGS	POSITIVE	TIN/COPPER	94V-0																			
39-30-3106	5569-10A4-210	10	PEGS	POSITIVE	TIN/COPPER	94V-0																			
39-30-3116	5569-11A4-210	11	PEGS	POSITIVE	TIN/COPPER	94V-0																			
39-30-3126	5569-12A4-210	12	PEGS	POSITIVE	TIN/COPPER	94V-0																			
39-30-3047	5569-04A4G	4	PEGS	POSITIVE	30 GOLD	94V-2																			
39-30-3057	5569-05A4G	5	PEGS	POSITIVE	30 GOLD	94V-2																			
39-30-3067	5569-06A4G	6	PEGS	POSITIVE	30 GOLD	94V-2																			
39-30-3077	5569-07A4G	7	PEGS	POSITIVE	30 GOLD	94V-2																			
39-30-3087	5569-08A4G	8	PEGS	POSITIVE	30 GOLD	94V-2																			
39-30-3097	5569-09A4G	9	PEGS	POSITIVE	30 GOLD	94V-2																			
39-30-3107	5569-10A4G	10	PEGS	POSITIVE	30 GOLD	94V-2																			
39-30-3117	5569-11A4G	11	PEGS	POSITIVE	30 GOLD	94V-2																			
39-30-3127	5569-12A4G	12	PEGS	POSITIVE	30 GOLD	94V-2																			
39-30-3048	5569-04A4G-210	4	PEGS	POSITIVE	30 GOLD	94V-0																			
39-30-3058	5569-05A4G-210	5	PEGS	POSITIVE	30 GOLD	94V-0																			
39-30-3068	5569-06A4G-210	6	PEGS	POSITIVE	30 GOLD	94V-0																			
39-30-3078	5569-07A4G-210	7	PEGS	POSITIVE	30 GOLD	94V-0																			
39-30-3088	5569-08A4G-210	8	PEGS	POSITIVE	30 GOLD	94V-0																			
39-30-3098	5569-09A4G-210	9	PEGS	POSITIVE	30 GOLD	94V-0																			
39-30-3108	5569-10A4G-210	10	PEGS	POSITIVE	30 GOLD	94V-0																			
39-30-3118	5569-11A4G-210	11	PEGS	POSITIVE	30 GOLD	94V-0																			
39-30-3128	5569-12A4G-210	12	PEGS	POSITIVE	30 GOLD	94V-0																			

<b>SEE SHEET 1</b> EC NO. UCF2011-2342 DRAWN: JAGO/LAR 2011/02/04 CHECKED: BELL 2011/02/04 APPR: SMITH 2011/02/11	QUALITY SYMBOLS ∇=0 ∇=0 ∇=0	GENERAL TOLERANCES (UNLESS SPECIFIED) mm INCH 4 PLACES ± --- ± --- 3 PLACES ± --- ± .015 2 PLACES ± .38 ± --- 1 PLACE ± --- ± --- ANGULAR ± 3°	DIMENSION STYLE IN/MM DRAWN BY: KSS DATE: 2/14/89 CHECKED BY: R/JF DATE: 2/14/89 APPROVED BY: RAS DATE: 2/14/89	SCALE: DESIGN UNITS: METRIC TITLE: RIGHT ANGLE HEADER ASSY (SINGLE ROW) (MINI-FIT JR. SERIES) MOLEX MOLEX INCORPORATED	MATERIAL NO.: SEE TABLE DOCUMENT NO.: SDA-5569-NL* SHEET NO.: 2 OF 4
	DRAFT WHERE APPLICABLE MUST REMAIN WITHIN DIMENSIONS				
	THIS DRAWING CONTAINS INFORMATION THAT IS PROPRIETARY TO MOLEX INCORPORATED AND SHOULD NOT BE USED WITHOUT WRITTEN PERMISSION				
	THIRD ANGLE PROJECTION				

	13	12	11	10	9	8	7	6	5	4	3	2	1		
	E.D.P. NO.	ENG. NO.	CKT. SIZE	MOUNTING OPTION	LOCK OPTION	PLATING (SEE NOTE 2)	MAT'L. (SEE NOTE 1)		E.D.P. NO.	ENG. NO.	CKT. SIZE	MOUNTING OPTION	LOCK OPTION	PLATING (SEE NOTE 2)	MAT'L. (SEE NOTE 1)
J	NO E.D.P.	5569-04A5	4	PEGS	PASSIVE	TIN/COPPER	94V-2		NO E.D.P.	5569-04A4GS-400	4	PEG	POSITIVE	30 GOLD	94V-0
	15-24-1501	5569-05A5	5	PEGS	PASSIVE	TIN/COPPER	94V-2		50-30-4436	5569-05A4GS-400	5	PEG	POSITIVE	30 GOLD	94V-0
	NO E.D.P.	5569-06A5	6	PEGS	PASSIVE	TIN/COPPER	94V-2		NO E.D.P.	5569-06A4GS-400	6	PEG	POSITIVE	30 GOLD	94V-0
	NO E.D.P.	5569-07A5	7	PEGS	PASSIVE	TIN/COPPER	94V-2		NO E.D.P.	5569-07A4GS-400	7	PEG	POSITIVE	30 GOLD	94V-0
	NO E.D.P.	5569-08A5	8	PEGS	PASSIVE	TIN/COPPER	94V-2		NO E.D.P.	5569-08A4GS-400	8	PEG	POSITIVE	30 GOLD	94V-0
	NO E.D.P.	5569-09A5	9	PEGS	PASSIVE	TIN/COPPER	94V-2		NO E.D.P.	5569-09A4GS-400	9	PEG	POSITIVE	30 GOLD	94V-0
	NO E.D.P.	5569-10A5	10	PEGS	PASSIVE	TIN/COPPER	94V-2		NO E.D.P.	5569-10A4GS-400	10	PEG	POSITIVE	30 GOLD	94V-0
I	NO E.D.P.	5569-11A5	11	PEGS	PASSIVE	TIN/COPPER	94V-2		NO E.D.P.	5569-11A4GS-400	11	PEG	POSITIVE	30 GOLD	94V-0
	NO E.D.P.	5569-12A5	12	PEGS	PASSIVE	TIN/COPPER	94V-2		NO E.D.P.	5569-12A4GS-400	12	PEG	POSITIVE	30 GOLD	94V-0
	NO E.D.P.	5569-04A5-210	4	PEGS	PASSIVE	TIN/COPPER	94V-0		50-30-4438	5569-04A4GS	4	PEG	POSITIVE	30 GOLD	94V-2
	15-24-1503	5569-05A5-210	5	PEGS	PASSIVE	TIN/COPPER	94V-0		50-30-4439	5569-05A4GS	5	PEG	POSITIVE	30 GOLD	94V-2
	NO E.D.P.	5569-06A5-210	6	PEGS	PASSIVE	TIN/COPPER	94V-0		NO E.D.P.	5569-06A4GS	6	PEG	POSITIVE	30 GOLD	94V-2
	NO E.D.P.	5569-07A5-210	7	PEGS	PASSIVE	TIN/COPPER	94V-0		NO E.D.P.	5569-07A4GS	7	PEG	POSITIVE	30 GOLD	94V-2
H	NO E.D.P.	5569-08A5-210	8	PEGS	PASSIVE	TIN/COPPER	94V-0		NO E.D.P.	5569-08A4GS	8	PEG	POSITIVE	30 GOLD	94V-2
	NO E.D.P.	5569-09A5-210	9	PEGS	PASSIVE	TIN/COPPER	94V-0		NO E.D.P.	5569-09A4GS	9	PEG	POSITIVE	30 GOLD	94V-2
	NO E.D.P.	5569-10A5-210	10	PEGS	PASSIVE	TIN/COPPER	94V-0		NO E.D.P.	5569-10A4GS	10	PEG	POSITIVE	30 GOLD	94V-2
	NO E.D.P.	5569-11A5-210	11	PEGS	PASSIVE	TIN/COPPER	94V-0		NO E.D.P.	5569-11A4GS	11	PEG	POSITIVE	30 GOLD	94V-2
	NO E.D.P.	5569-12A5-210	12	PEGS	PASSIVE	TIN/COPPER	94V-0		NO E.D.P.	5569-12A4GS	12	PEG	POSITIVE	30 GOLD	94V-2
G	15-27-1501	5569-05A5G2	5	PEGS	PASSIVE	I5 GOLD	94V-2		50-30-4441	5569-04A4GS-210	4	PEG	POSITIVE	30 GOLD	94V-0
	NO E.D.P.	5569-06A5G2	6	PEGS	PASSIVE	I5 GOLD	94V-2		50-30-4442	5569-05A4GS-210	5	PEG	POSITIVE	30 GOLD	94V-0
	NO E.D.P.	5569-07A5G2	7	PEGS	PASSIVE	I5 GOLD	94V-2		NO E.D.P.	5569-06A4GS-210	6	PEG	POSITIVE	30 GOLD	94V-0
	NO E.D.P.	5569-08A5G2	8	PEGS	PASSIVE	I5 GOLD	94V-2		NO E.D.P.	5569-07A4GS-210	7	PEG	POSITIVE	30 GOLD	94V-0
	NO E.D.P.	5569-09A5G2	9	PEGS	PASSIVE	I5 GOLD	94V-2		NO E.D.P.	5569-08A4GS-210	8	PEG	POSITIVE	30 GOLD	94V-0
	NO E.D.P.	5569-10A5G2	10	PEGS	PASSIVE	I5 GOLD	94V-2		NO E.D.P.	5569-09A4GS-210	9	PEG	POSITIVE	30 GOLD	94V-0
	NO E.D.P.	5569-11A5G2	11	PEGS	PASSIVE	I5 GOLD	94V-2		NO E.D.P.	5569-10A4GS-210	10	PEG	POSITIVE	30 GOLD	94V-0
F	NO E.D.P.	5569-12A5G2	12	PEGS	PASSIVE	I5 GOLD	94V-2		NO E.D.P.	5569-11A4GS-210	11	PEG	POSITIVE	30 GOLD	94V-0
	39-31-1042	5569-04A4-BL	4	PEGS	POSITIVE	TIN/COPPER	94V-2 BLACK		50-30-4443	5569-04A3GS	4	SCREW	POSITIVE	30 GOLD	94V-2
	39-31-1052	5569-05A4-BL	5	PEGS	POSITIVE	TIN/COPPER	94V-2 BLACK		NO E.D.P.	5569-05A3GS	5	SCREW	POSITIVE	30 GOLD	94V-2
	39-31-1062	5569-06A4-BL	6	PEGS	POSITIVE	TIN/COPPER	94V-2 BLACK		NO E.D.P.	5569-06A3GS	6	SCREW	POSITIVE	30 GOLD	94V-2
	39-31-1072	5569-07A4-BL	7	PEGS	POSITIVE	TIN/COPPER	94V-2 BLACK		NO E.D.P.	5569-07A3GS	7	SCREW	POSITIVE	30 GOLD	94V-2
	39-31-1082	5569-08A4-BL	8	PEGS	POSITIVE	TIN/COPPER	94V-2 BLACK		NO E.D.P.	5569-08A3GS	8	SCREW	POSITIVE	30 GOLD	94V-2
	39-31-1092	5569-09A4-BL	9	PEGS	POSITIVE	TIN/COPPER	94V-2 BLACK		NO E.D.P.	5569-09A3GS	9	SCREW	POSITIVE	30 GOLD	94V-2
E	39-31-1102	5569-10A4-BL	10	PEGS	POSITIVE	TIN/COPPER	94V-2 BLACK		NO E.D.P.	5569-10A3GS	10	SCREW	POSITIVE	30 GOLD	94V-2
	39-31-1112	5569-11A4-BL	11	PEGS	POSITIVE	TIN/COPPER	94V-2 BLACK		NO E.D.P.	5569-11A3GS	11	SCREW	POSITIVE	30 GOLD	94V-2
	39-31-1122	5569-12A4-BL	12	PEGS	POSITIVE	TIN/COPPER	94V-2 BLACK		NO E.D.P.	5569-12A3GS	12	SCREW	POSITIVE	30 GOLD	94V-2
	39-30-6049	5569-04A3S	4	SCREWS	POSITIVE	TIN/NICKEL	94V-2		NO E.D.P.	5569-04A4-400	4	PEG	POSITIVE	TIN/COPPER	94V-2 BLACK
	NO E.D.P.	5569-05A3S	5	SCREWS	POSITIVE	TIN/NICKEL	94V-2		NO E.D.P.	5569-05A4-400	5	PEG	POSITIVE	TIN/COPPER	94V-2 BLACK
D	NO E.D.P.	5569-06A3S	6	SCREWS	POSITIVE	TIN/NICKEL	94V-2		NO E.D.P.	5569-06A4-400	6	PEG	POSITIVE	TIN/COPPER	94V-2 BLACK
	NO E.D.P.	5569-07A3S	7	SCREWS	POSITIVE	TIN/NICKEL	94V-2		NO E.D.P.	5569-07A4-400	7	PEG	POSITIVE	TIN/COPPER	94V-2 BLACK
	NO E.D.P.	5569-08A3S	8	SCREWS	POSITIVE	TIN/NICKEL	94V-2		NO E.D.P.	5569-08A4-400	8	PEG	POSITIVE	TIN/COPPER	94V-2 BLACK
	NO E.D.P.	5569-09A3S	9	SCREWS	POSITIVE	TIN/NICKEL	94V-2		NO E.D.P.	5569-09A4-400	9	PEG	POSITIVE	TIN/COPPER	94V-2 BLACK
	NO E.D.P.	5569-10A3S	10	SCREWS	POSITIVE	TIN/NICKEL	94V-2		NO E.D.P.	5569-10A4-400	10	PEG	POSITIVE	TIN/COPPER	94V-2 BLACK
	NO E.D.P.	5569-11A3S	11	SCREWS	POSITIVE	TIN/NICKEL	94V-2		NO E.D.P.	5569-11A4-400	11	PEG	POSITIVE	TIN/COPPER	94V-2 BLACK
	NO E.D.P.	5569-12A3S	12	SCREWS	POSITIVE	TIN/NICKEL	94V-2		NO E.D.P.	5569-12A4-400	12	PEG	POSITIVE	TIN/COPPER	94V-2 BLACK

**SEE SHEET 1**  
 EC NO. UEP2011-2342  
 DRAWN: JAGUILAR 2011/02/04  
 CHKD: BELL 2011/02/04  
 APPR: SMITH 2011/02/11

QUALITY SYMBOLS  
 ∇=0  
 ∇=0  
 ∇=0

GENERAL TOLERANCES (UNLESS SPECIFIED)  
 4 PLACES ±.000 ±.000  
 3 PLACES ±.005 ±.015  
 2 PLACES ±.030 ±.040  
 1 PLACE ±.060 ±.080  
 ANGULAR ± 3°

DIMENSION STYLE IN/MM  
 DRAWN BY DATE KSS 2/14/89  
 CHECKED BY DATE R/JF 2/14/89  
 APPROVED BY DATE RAS 2/14/89

SCALE DESIGN UNITS METRIC  
 THIRD ANGLE PROJECTION

TITLE RIGHT ANGLE HEADER ASSY (SINGLE ROW) (MINI-FIT JR. SERIES)  
 MOLEX INCORPORATED  
 MATERIAL NO. SDA-5569-NL\*  
 DOCUMENT NO. SHEET NO. 3 OF 4

DRAFT WHERE APPLICABLE MUST REMAIN WITHIN DIMENSIONS  
 SEE CHARTS  
 THIS DRAWING CONTAINS INFORMATION THAT IS PROPRIETARY TO MOLEX INCORPORATED AND SHOULD NOT BE USED WITHOUT WRITTEN PERMISSION

	12	11	10	9	8	7	6	5	4	3	2	1
--	----	----	----	---	---	---	---	---	---	---	---	---

13	12	11	10	9	8	7	6	5	4	3	2	1
E.D.P. NO.	ENG. NO.	CKT. SIZE	MOUNTING OPTION	LOCK OPTION	PLATING (SEE NOTE 2)	MATERIAL (SEE NOTE 1)						
50-30-4469	5569-04A3S-210	4	SCREW	POSITIVE	TIN/NICKEL	94V-2						
NO E.D.P.	5569-05A3S-210	5	SCREW	POSITIVE	TIN/NICKEL	94V-2						
NO E.D.P.	5569-06A3S-210	6	SCREW	POSITIVE	TIN/NICKEL	94V-2						
NO E.D.P.	5569-07A3S-210	7	SCREW	POSITIVE	TIN/NICKEL	94V-2						
NO E.D.P.	5569-08A3S-210	8	SCREW	POSITIVE	TIN/NICKEL	94V-2						
NO E.D.P.	5569-09A3S-210	9	SCREW	POSITIVE	TIN/NICKEL	94V-2						
NO E.D.P.	5569-10A3S-210	10	SCREW	POSITIVE	TIN/NICKEL	94V-2						
NO E.D.P.	5569-11A3S-210	11	SCREW	POSITIVE	TIN/NICKEL	94V-2						
NO E.D.P.	5569-12A3S-210	12	SCREW	POSITIVE	TIN/NICKEL	94V-2						
NO E.D.P.	5569-04A3GS-210	4	SCREW	POSITIVE	30 GOLD	94V-0						
NO E.D.P.	5569-05A3GS-210	5	SCREW	POSITIVE	30 GOLD	94V-0						
NO E.D.P.	5569-06A3GS-210	6	SCREW	POSITIVE	30 GOLD	94V-0						
NO E.D.P.	5569-07A3GS-210	7	SCREW	POSITIVE	30 GOLD	94V-0						
NO E.D.P.	5569-08A3GS-210	8	SCREW	POSITIVE	30 GOLD	94V-0						
NO E.D.P.	5569-09A3GS-210	9	SCREW	POSITIVE	30 GOLD	94V-0						
NO E.D.P.	5569-10A3GS-210	10	SCREW	POSITIVE	30 GOLD	94V-0						
NO E.D.P.	5569-11A3GS-210	11	SCREW	POSITIVE	30 GOLD	94V-0						
NO E.D.P.	5569-12A3GS-210	12	SCREW	POSITIVE	30 GOLD	94V-0						
NO E.D.P.	5569-04A5GS2	4	PEG	PASSIVE	15 GOLD	94V-2						
26-01-3095	5569-05A5GS2	5	PEG	PASSIVE	15 GOLD	94V-2						
NO E.D.P.	5569-06A5GS2	6	PEG	PASSIVE	15 GOLD	94V-2						
NO E.D.P.	5569-07A5GS2	7	PEG	PASSIVE	15 GOLD	94V-2						
NO E.D.P.	5569-08A5GS2	8	PEG	PASSIVE	15 GOLD	94V-2						
NO E.D.P.	5569-09A5GS2	9	PEG	PASSIVE	15 GOLD	94V-2						
NO E.D.P.	5569-10A5GS2	10	PEG	PASSIVE	15 GOLD	94V-2						
NO E.D.P.	5569-11A5GS2	11	PEG	PASSIVE	15 GOLD	94V-2						
NO E.D.P.	5569-12A5GS2	12	PEG	PASSIVE	15 GOLD	94V-2						

<b>SEE SHEET 1</b> EC NO. IEP2011-2342 DRWNG: JAGUILAR 2011/02/04 CHKD: J.BELL 2011/02/04 APPR: F.SMITH 2011/02/11 P6	QUALITY SYMBOLS 	GENERAL TOLERANCES (UNLESS SPECIFIED) mm INCH 4 PLACES ±.005 ±.005 3 PLACES ±.005 ±.015 2 PLACES ±.005 ±.030 1 PLACE ±.005 ±.030 ANGULAR ± 3°		DIMENSION STYLE IN/MM	SCALE METRIC	DESIGN UNITS METRIC	THIRD ANGLE PROJECTION	
		DRAWN BY KSS DATE 2/14/89 CHECKED BY RJF DATE 2/14/89 APPROVED BY RAS DATE 2/14/89		TITLE RIGHT ANGLE HEADER ASSY (SINGLE ROW) (MINI-FIT JR. SERIES)		MOLEX INCORPORATED		MATERIAL NO. SDA-5569-NL* DOCUMENT NO.
		DRAFT WHERE APPLICABLE MUST REMAIN WITHIN DIMENSIONS		SEE TABLES		THIS DRAWING CONTAINS INFORMATION THAT IS PROPRIETARY TO MOLEX INCORPORATED AND SHOULD NOT BE USED WITHOUT WRITTEN PERMISSION		SHEET NO. 4 OF 4