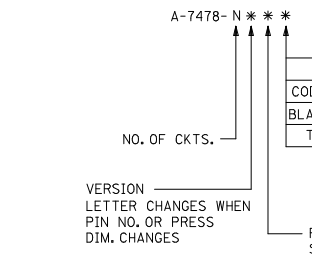
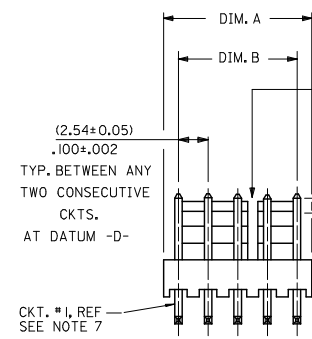
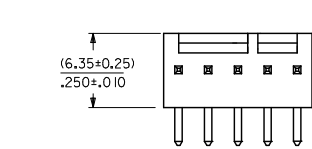
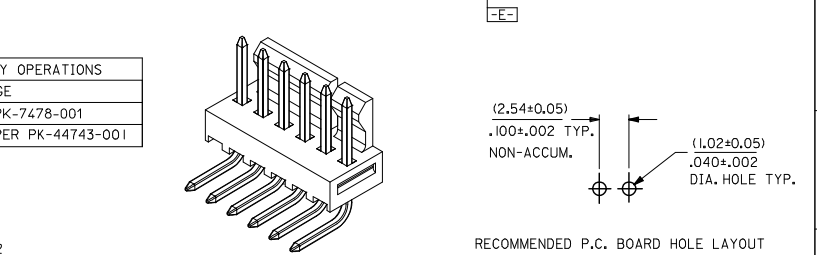
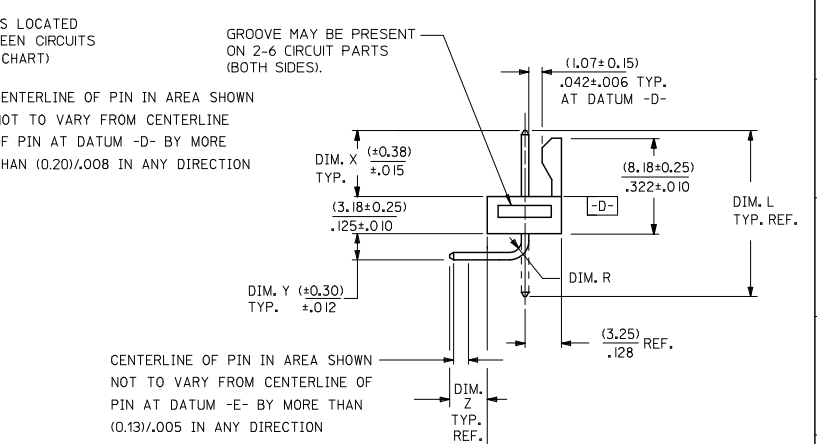


	13	12	11	10	9	8	7	6	5	4	3	2	1
J	28	(71.12 / 70.61) 2.800 / 2.780	(68.58 ± 0.25) 2.700 ± .010	4 , 5 24 , 25									
	27	(68.58 / 68.07) 2.700 / 2.680	(66.04 ± 0.25) 2.600 ± .010	4 , 5 24 , 25									
I	26	(66.04 / 65.53) 2.600 / 2.580	(63.50 ± 0.25) 2.500 ± .010	4 , 5 20 , 21									
	25	(63.50 / 62.99) 2.500 / 2.480	(60.96 ± 0.25) 2.400 ± .010	4 , 5 20 , 21									
H	24	(60.96 / 60.45) 2.400 / 2.380	(58.42 ± 0.25) 2.300 ± .010	4 , 5 20 , 21									
	23	(58.42 / 57.96) 2.300 / 2.282	(55.88 ± 0.23) 2.200 ± .009	4 , 5 20 , 21									
	22	(55.88 / 55.42) 2.200 / 2.182	(53.34 ± 0.23) 2.100 ± .009	4 , 5 16 , 17									
G	21	(53.34 / 52.88) 2.100 / 2.082	(50.80 ± 0.23) 2.000 ± .009	4 , 5 16 , 17									
	20	(50.80 / 50.34) 2.000 / 1.982	(48.26 ± 0.23) 1.900 ± .009	4 , 5 16 , 17									
F	19	(48.26 / 47.80) 1.900 / 1.882	(45.72 ± 0.23) 1.800 ± .009	4 , 5 16 , 17									
	18	(45.72 / 45.31) 1.800 / 1.784	(43.18 ± 0.20) 1.700 ± .008	4 , 5 12 , 13									
E	17	(43.18 / 42.77) 1.700 / 1.684	(40.64 ± 0.20) 1.600 ± .008	4 , 5 12 , 13									
	16	(40.64 / 40.23) 1.600 / 1.584	(38.10 ± 0.20) 1.500 ± .008	4 , 5 12 , 13									
D	15	(38.10 / 37.69) 1.500 / 1.484	(35.56 ± 0.20) 1.400 ± .008	4 , 5 12 , 13									
C	14	(35.56 / 35.20) 1.400 / 1.386	(33.02 ± 0.18) 1.300 ± .007	4 , 5 8 , 9									
	13	(33.02 / 32.66) 1.300 / 1.286	(30.48 ± 0.18) 1.200 ± .007	4 , 5 8 , 9									
B	12	(30.48 / 30.12) 1.200 / 1.186	(27.94 ± 0.18) 1.100 ± .007	4 , 5 8 , 9									
A	11	(27.94 / 27.58) 1.100 / 1.086	(25.40 ± 0.18) 1.000 ± .007	4 , 5 8 , 9									
	10	(25.40 / 25.04) 1.000 / .986	(22.86 ± 0.15) .900 ± .006	4 , 5									
	9	(22.86 / 22.50) .900 / .886	(20.32 ± 0.15) .800 ± .006	4 , 5									
	8	(20.32 / 19.96) .800 / .786	(17.78 ± 0.15) .700 ± .006	4 , 5									
	7	(17.78 / 17.42) .700 / .686	(15.24 ± 0.13) .600 ± .005	4 , 5									
	6	(15.24 / 14.88) .600 / .586	(12.70 ± 0.13) .500 ± .005	4 , 5									
	5	(12.70 / 12.40) .500 / .488	(10.16 ± 0.13) .400 ± .005	NONE									
	4	(10.16 / 9.86) .400 / .388	(7.62 ± 0.13) .300 ± .005	NONE									
	3	(7.62 / 7.32) .300 / .288	(5.08 ± 0.10) .200 ± .004	NONE									
	2	(5.08 / 4.78) .200 / .188	(2.54 ± 0.05) .100 ± .002	NONE									



NOTES:

- MATERIAL: NYLON, UL94V-0, COLOR: WHITE
- FINISH:
 - (102) - OVERALL TIN: (0.00508)/.000200 MIN., OVERALL COPPER UNDERPLATE: (0.00254)/.000100 MIN.
 - (154) - OVERALL TIN: (0.00254)/.000100 MIN., OVERALL NICKEL UNDERPLATE: (0.00127)/.000050 MIN.
 - (501) - OVERALL GOLD: (0.00051)/.000020 MIN., OVERALL NICKEL UNDERPLATE: (0.00076)/.000030 MIN.
 - (503) - OVERALL GOLD: (0.00076)/.000030 MIN., OVERALL NICKEL UNDERPLATE: (0.00127)/.000050 MIN.
 - (531) - OVERALL GOLD: (0.00038)/.000015 MIN., OVERALL NICKEL UNDERPLATE: (0.00076)/.000030 MIN.
- PARTS CONFORM TO PRODUCT SPECIFICATION PS-10-07.
- PACKAGING INFORMATION: SEE LEGEND.
- PARTS ARE STACKABLE END TO END ON (2.54)/.100 CENTERS.
- PIN PUSH OUT FORCE: 2 LBS. MIN.
- CIRCUIT ONE DESIGNATION IS USED TO DEFINE VOID LOCATION. CIRCUIT ONE MAY OR MAY NOT LINE UP WITH CIRCUIT ONE ON THE MATING HOUSING.
- THIS PART CONFORMS TO CLASS B REQUIREMENTS OF COSMETIC SPECIFICATION PS-45499-002.



NO. OF CKTS.	DIM. A	DIM. B	SLOTS LOC.
7	Y4		
6	W1		
5	Y8		
4	Y7		
3	Y9		
2	Y9		
1	Z		
1	Z		

ADD GROOVE	EC NO. UCP2009-0785	2008/12/29	2009/01/30
DRAWN/KK/PPER	CHKD/SS/USEK	APPROV/SMITH	2009/01/30
REV	DESCRIPTION	QUALITY SYMBOLS	
		▽=0	
		▽=0	

GENERAL TOLERANCES (UNLESS SPECIFIED)	
	mm
4 PLACES	±.005
3 PLACES	±.010
2 PLACES	±.015
1 PLACE	±.038
ANGULAR ±1/2°	

DIMENSION STYLE	
MM/IN	SCALE
DRAWN BY GUZ1C	DATE 1987/07/30
CHECKED BY PATEL	DATE 1987/07/30
APPROVED BY LENZ	DATE 1987/07/30

TITLE	FRICITION LOCK HEADER ASY
	.100 CL BENT SQ PINS
	7478 SERIES DWG
MATERIAL NO.	SDA-7478
DOCUMENT NO.	MOLEX INCORPORATED
SHEET NO.	1 OF 7

DRAFT WHERE APPLICABLE MUST REMAIN WITHIN DIMENSIONS

SEE CHART

THIS DRAWING CONTAINS INFORMATION THAT IS PROPRIETARY TO MOLEX INCORPORATED AND SHOULD NOT BE USED WITHOUT WRITTEN PERMISSION

	13	12	11	10	9	8	7	6	5	4	3	2	1				
J	ENG. NO.	PIN NO.	DIM. L	DIM. X	DIM. Z	DIM. Y	DIM. W	DIM. R	ENG. NO.	PIN NO.	DIM. L	DIM. X	DIM. Z	DIM. Y	DIM. W	DIM. T	J
	A-7478-NA I02	2766-4 (I02)	(18.69) .736	(6.60) .260	(3.58) .141	(3.05) .120	90°	(1.17) .046									
	A-7478-NA50I	2766-4 (K50 I)	(18.69) .736	(6.60) .260	(3.58) .141	(3.05) .120	90°	(1.17) .046									
I	A-7478-NA50IT	2766-4 (K50 I)	(18.69) .736	(6.60) .260	(3.58) .141	(3.05) .120	90°	(1.17) .046									I
	A-7478-NA I02T	2766-4 (I02)	(18.69) .736	(6.60) .260	(3.58) .141	(3.05) .120	90°	(1.17) .046									
H																	H
G																	G
F																	F
E																	E
D																	D
C																	C
B																	B
A																	A
	ib_frame_C_P_ME_T Rev. D 2004/04/02																

ADD A-7478-NA I02T
 SEC NO. UCP2006-1815 2006/02/06
 Y0 DRWNA50I 2006/02/06
 UFKOJELHAG 2006/02/06
 APPRESMITH 2006/02/09

QUALITY SYMBOLS
 ▽=0
 ▽=0
 DESCRIPTION
 REV

GENERAL TOLERANCES (UNLESS SPECIFIED)

	mm	INCH
4 PLACES	± .005	± .0002
3 PLACES	± .005	± .0002
2 PLACES	± .005	± .0002
1 PLACE	± .005	± .0002
ANGULAR	± .005°	± .0002°

DRAFT WHERE APPLICABLE
 MUST REMAIN WITHIN DIMENSIONS

DIMENSION STYLE IN/MM

DRAWN BY	DATE
SUZIK	1987/07/10
CHECKED BY	DATE
PATEL	1987/07/10
APPROVED BY	DATE
LENZ	1987/07/10

MATERIAL NO. SEE CHART
 SIZE C

SCALE --- DESIGN UNITS INCH

THIRD ANGLE PROJECTION

TITLE
 FRICTION LOCK HEADER ASY
 .100 CL BENT SQ PINS
 7478 SERIES DWG

MOLEX INCORPORATED

DOCUMENT NO. SDA-7478
 SHEET NO. 2 OF 7

THIS DRAWING CONTAINS INFORMATION THAT IS PROPRIETARY TO MOLEX INCORPORATED AND SHOULD NOT BE USED WITHOUT WRITTEN PERMISSION

	13	12	11	10	9	8	7	6	5	4	3	2	1																			
	A-7478-NA I02		A-7478-NA50 I		A-7478-NA50 I T		A-7478-NA I02 T																									
J	PART NO.	ENG. NO.	PART NO.	ENG. NO.	PART NO.	ENG. NO.	PART NO.	ENG. NO.	PART NO.	ENG. NO.	PART NO.	ENG. NO.	PART NO.	ENG. NO.																		
	22-05-3021	A-7478-2A I02	22-12-2024	A-7478-2A50 I	50-29-1710	A-7478-2A50 I T	50-34-8500	A-7478-2A I02 T																								
	22-05-3031	A-7478-3A I02	22-12-2034	A-7478-3A50 I	50-29-1711	A-7478-3A50 I T	50-34-8501	A-7478-3A I02 T																								
	22-05-3041	A-7478-4A I02	22-12-2044	A-7478-4A50 I	50-29-1705	A-7478-4A50 I T	50-34-8502	A-7478-4A I02 T																								
I	22-05-3051	A-7478-5A I02	22-12-2054	A-7478-5A50 I	50-29-1712	A-7478-5A50 I T																										
	22-05-3061	A-7478-6A I02	22-12-2064	A-7478-6A50 I	50-29-1713	A-7478-6A50 I T																										
	22-05-3071	A-7478-7A I02	22-12-2074	A-7478-7A50 I	50-29-1714	A-7478-7A50 I T																										
	22-05-3081	A-7478-8A I02	22-12-2084	A-7478-8A50 I	50-29-1715	A-7478-8A50 I T																										
H	22-05-3091	A-7478-9A I02	22-12-2094	A-7478-9A50 I	50-29-1716	A-7478-9A50 I T																										
	22-05-3101	A-7478-10A I02	22-12-2104	A-7478-10A50 I	50-29-1717	A-7478-10A50 I T																										
	22-05-3111	A-7478-11A I02	22-12-2114	A-7478-11A50 I	50-29-1718	A-7478-11A50 I T																										
	22-05-3121	A-7478-12A I02	22-12-2124	A-7478-12A50 I	50-29-1719	A-7478-12A50 I T																										
	22-05-3131	A-7478-13A I02	22-12-2134	A-7478-13A50 I	50-29-1720	A-7478-13A50 I T																										
	22-05-3141	A-7478-14A I02	22-12-2144	A-7478-14A50 I	50-29-1721	A-7478-14A50 I T																										
G	22-05-3151	A-7478-15A I02	22-12-2154	A-7478-15A50 I	50-29-1722	A-7478-15A50 I T																										
	22-05-3161	A-7478-16A I02	22-12-2164	A-7478-16A50 I	50-29-1723	A-7478-16A50 I T																										
	22-05-3171	A-7478-17A I02	22-12-2174	A-7478-17A50 I	50-29-1724	A-7478-17A50 I T																										
	22-05-3181	A-7478-18A I02	22-12-2184	A-7478-18A50 I	50-29-1725	A-7478-18A50 I T																										
	22-05-3191	A-7478-19A I02	22-12-2194	A-7478-19A50 I	50-29-1726	A-7478-19A50 I T																										
F	22-05-3201	A-7478-20A I02	22-12-2204	A-7478-20A50 I	50-29-1727	A-7478-20A50 I T																										
	22-05-3211	A-7478-21A I02	22-12-2214	A-7478-21A50 I	50-29-1728	A-7478-21A50 I T																										
	22-05-3221	A-7478-22A I02	22-12-2224	A-7478-22A50 I	50-29-1729	A-7478-22A50 I T																										
	22-05-3231	A-7478-23A I02	22-12-2234	A-7478-23A50 I	50-29-1730	A-7478-23A50 I T																										
	22-05-3241	A-7478-24A I02	22-12-2244	A-7478-24A50 I	50-29-1731	A-7478-24A50 I T																										
	22-05-3251	A-7478-25A I02	22-12-2254	A-7478-25A50 I	50-29-1732	A-7478-25A50 I T																										
	22-05-3261	A-7478-26A I02	22-12-2264	A-7478-26A50 I	50-29-1733	A-7478-26A50 I T																										
E	22-05-3271	A-7478-27A I02	22-12-2274	A-7478-27A50 I	50-29-1734	A-7478-27A50 I T																										
	22-05-3281	A-7478-28A I02	22-12-2284	A-7478-28A50 I	50-29-1735	A-7478-28A50 I T																										
D																																
C																																
B																																
A																																
	ADD PINS EC NO. UCP2006-1815 2006/02/06 DRW:ADBR 2006/02/06 CHK:BELHAG 2006/02/06 APP:FSMTH 2006/02/09 REV DESCRIPTION		QUALITY SYMBOLS ▽=0 ▽=0		GENERAL TOLERANCES (UNLESS SPECIFIED) <table border="1"> <tr> <td></td> <td>mm</td> <td>INCH</td> </tr> <tr> <td>4 PLACES</td> <td>±.000</td> <td>±.000</td> </tr> <tr> <td>3 PLACES</td> <td>±.000</td> <td>±.000</td> </tr> <tr> <td>2 PLACES</td> <td>±.000</td> <td>±.000</td> </tr> <tr> <td>1 PLACE</td> <td>±.000</td> <td>±.000</td> </tr> <tr> <td>ANGULAR</td> <td>±.000°</td> <td></td> </tr> </table>			mm	INCH	4 PLACES	±.000	±.000	3 PLACES	±.000	±.000	2 PLACES	±.000	±.000	1 PLACE	±.000	±.000	ANGULAR	±.000°		DIMENSION STYLE IN/MM		SCALE ---		DESIGN UNITS INCH		THIRD ANGLE PROJECTION	
	mm	INCH																														
4 PLACES	±.000	±.000																														
3 PLACES	±.000	±.000																														
2 PLACES	±.000	±.000																														
1 PLACE	±.000	±.000																														
ANGULAR	±.000°																															
DRAWN BY SUZIK DATE 1987/07/10		CHECKED BY PATEL DATE 1987/07/10		APPROVED BY LENZ DATE 1987/07/10		MATERIAL NO. SEE CHART		DOCUMENT NO. SDA-7478		SHEET NO. 3 OF 7																						
DRAFT WHERE APPLICABLE MUST REMAIN WITHIN DIMENSIONS												THIS DRAWING CONTAINS INFORMATION THAT IS PROPRIETARY TO MOLEX INCORPORATED AND SHOULD NOT BE USED WITHOUT WRITTEN PERMISSION																				