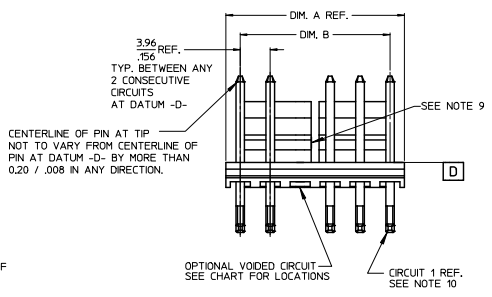
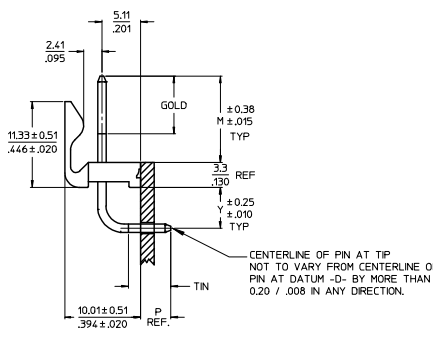
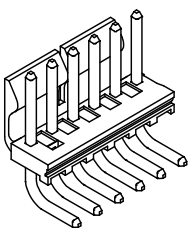
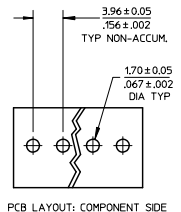


10 9 8 7 6 5 4 3 2



| CKT | DIM. A | DIM. B | SLOT LOC BETWEEN CKTS |
|-----|----------------|------------------------------|-----------------------|
| 2 | 7.77 .306 | 3.96 ± 0.05 .156 ± .002 | NONE |
| 3 | 11.73 .442 | 7.92 ± 0.08 .312 ± .003 | NONE |
| 4 | 15.70 .618 | 11.89 ± 0.08 .468 ± .003 | NONE |
| 5 | 19.66 .774 | 15.85 ± 0.10 .624 ± .004 | NONE |
| 6 | 23.62 .930 | 19.81 ± 0.10 .780 ± .004 | 3 & 4 |
| 7 | 27.58 1.086 | 23.77 ± 0.10 .936 ± .004 | 4 & 5 |
| 8 | 31.55 1.242 | 27.74 ± 0.13 1.092 ± .005 | 4 & 5 |
| 9 | 35.51 1.398 | 31.70 ± 0.13 1.248 ± .005 | 5 & 6 |
| 10 | 39.47 1.554 | 35.66 ± 0.13 1.404 ± .005 | 5 & 6 |
| 11 | 43.43 1.710 | 39.62 ± 0.15 1.560 ± .006 | 6 & 7 |
| 12 | 47.40 1.866 | 43.59 ± 0.15 1.716 ± .006 | 4 & 5 8 & 9 |
| 13 | 51.36 2.022 | 47.55 ± 0.15 1.872 ± .006 | 4 & 5 9 & 10 |
| 14 | 55.32 2.178 | 51.51 ± 0.18 2.028 ± .007 | 5 & 6 9 & 10 |
| 15 | 59.28 2.334 | 55.47 ± 0.18 2.184 ± .007 | 5 & 6 10 & 11 |
| 16 | 63.25 2.490 | 59.44 ± 0.18 2.340 ± .007 | 5 & 6 11 & 12 |
| 17 | 67.21 2.646 | 63.40 ± 0.20 2.496 ± .008 | 6 & 7 11 & 12 |
| 18 | 71.17 2.802 | 67.36 ± 0.20 2.652 ± .008 | 6 & 7 12 & 13 |

- NOTES:
- MATERIAL: HEADER-GLASS FILLED POLYESTER, 94V-0, MOLDED NATURAL (WHITE).
 - FINISH: (102) OVERALL TIN: .00508/.000200 MIN OVER .00254/.000100 MIN COPPER. (154) OVERALL TIN: .00254/.000100 MIN OVER .00127/.000050 MIN NICKEL. *(208) SELECT GOLD: .00038/.000015 MIN, SELECT TIN: .00254/.000100 MIN, OVERALL NICKEL UNDERPLATE: .00127/.000050 MIN. *(228) SELECT GOLD: .00076/.000030 MIN, SELECT TIN: .00254/.000100 MIN, OVERALL NICKEL UNDERPLATE: .00127/.000050 MIN. FOR ADDITIONAL PLATING INFO, SEE SDES-48.
 - THE PRIMARY SHIPPING CARTON WILL BE LABELED "COMPLIANT TO ROHS DIRECTIVE 2002/95/EC AND ELV ANNEX II OF DIRECTIVE 2000/53/EC. CARTONS WITHOUT THIS LABEL MAY CONTAIN PRODUCT WITH TIN-LEAD PLATING.
 - PRODUCT SPECIFICATION AND PROCESS PARAMETERS: SEE PS-08-50.
 - PACKAGING INFORMATION: SEE CHART
 - SOLDERABILITY: PER SDES-152.
 - PIN PUSH-OUT FORCE: PRIOR TO SOLDERING, A 3 LB. MINIMUM FORCE (IN EITHER DIRECTION)
 - PARTS ARE STACKABLE END TO END ON 3.96/.156 CENTERS.
 - THIS PART CONFORMS TO CLASS B REQUIREMENTS OF COSMETIC SPECIFICATION PS-45499-002.
 - SLOTS ON BACKWALL ARE BETWEEN CIRCUITS. SEE CHART FOR LOCATION.
 - SLOTS ON FRONTWALL ARE BETWEEN CIRCUITS. SEE CHART FOR LOCATION.
 - CIRCUIT 1 DESIGNATION IS USED TO DEFINE VOID LOCATION. CIRCUIT 1 MAY OR MAY NOT LINE UP WITH CIRCUIT 1 ON THE MATING HOUSING.



| | | | | | | |
|---|-------------------------------|--|---|---|---|------------------------|
| ADD CKT1 ID NOTE 10 EC NO: UCP2009-0749 DRW: HK PFER 2008/12/29 CHK: DSSOISEK 2008/12/29 APPR: F SMITH 2009/01/05 | QUALITY SYMBOLS ▽=0 ▽=0 | GENERAL TOLERANCES (UNLESS SPECIFIED) | DIMENSION STYLE MM/IN | SCALE 2:1 | DESIGN UNITS INCH | THIRD ANGLE PROJECTION |
| | | DRAFT WHERE APPLICABLE MUST REMAIN WITHIN DIMENSIONS | DRAWN BY JSCHAFFER DATE 11-07-03 | TITLE KK .156 HEADER ASSEMBLY FRICTION LOCK RIGHT ANGLE W/O PEGS | MOLEX MOLEX INCORPORATED | SHEET NO. 1 OF 1 |
| 2-- H6 1 H7 SHT REV | H7 | SEE CHART | MATERIAL NO. | DOCUMENT NO. SDA-41792 | THIS DRAWING CONTAINS INFORMATION THAT IS PROPRIETARY TO MOLEX INCORPORATED AND SHOULD NOT BE USED WITHOUT WRITTEN PERMISSION | |

| OPTIONS | Group | A-41792-0002/0018 | Group | A-41792-0511/0527 | Group | A-41792-0528/0544 | Group | A-41792-0562/0578 |
|-------------|--------------|-------------------|--------------|-------------------|--------------|-------------------|--------------|-------------------|
| | Header No: | 41790-0002/0018 | Header No: | 41790-0002/0018 | Header No: | 41790-0002/0018 | Header No: | 41790-0002/0018 |
| | Pin No: | 2161-37(102) | Pin No: | 43294-0569 | Pin No: | 43294-0570 | Pin No: | 43294-0570 |
| | Plating: | 102 – TIN | Plating: | 208 – 15 GOLD | Plating: | 228 – 30 GOLD | Plating: | 228 – 30 GOLD |
| | Pin Length L | 27.94 / 1.100 | Pin Length L | 27.94 / 1.100 | Pin Length L | 27.94 / 1.100 | Pin Length L | 27.94 / 1.100 |
| | Mating M | 11.43 / .450 | Mating M | 11.43 / .450 | Mating M | 11.43 / .450 | Mating M | 11.43 / .450 |
| | Gold Loc G | N/A | Gold Loc G | 6.86/ .270 | Gold Loc G | 6.86/ .270 | Gold Loc G | 6.86/ .270 |
| | Height Y | 5.41 / .213 | Height Y | 5.41 / .213 | Height Y | 5.41 / .213 | Height Y | 5.41 / .213 |
| | PC Tail P | 3.96/ .156 | PC Tail P | 3.96/ .156 | PC Tail P | 3.96/ .156 | PC Tail P | 3.96/ .156 |
| | Tin Loc T | OVERALL | Tin Loc T | 5.08/ .200 | Tin Loc T | 5.08/ .200 | Tin Loc T | 5.08/ .200 |
| Voided Ckts | NONE | Voided Ckts | NONE | Voided Ckts | NONE | Voided Ckts | 2 | |
| Pack Per | PK-41792-002 | Pack Per | PK-41792-002 | Pack Per | PK-41792-002 | Pack Per | PK-41792-002 | |
| Ckts | Material No | Engineer Number | Material No | Engineer Number | Material No | Engineer Number | Material No | Engineer Number |
| 2 | 26-60-5020 | A-41792-0002 | 41792-0511 | A-41792-0511 | 41792-0528 | A-41792-0528 | 41792-0562 | A-41792-0562 |
| 3 | 26-60-5030 | A-41792-0003 | 41792-0512 | A-41792-0512 | 41792-0529 | A-41792-0529 | 41792-0563 | A-41792-0563 |
| 4 | 26-60-5040 | A-41792-0004 | 41792-0513 | A-41792-0513 | 41792-0530 | A-41792-0530 | 41792-0564 | A-41792-0564 |
| 5 | 26-60-5050 | A-41792-0005 | 41792-0514 | A-41792-0514 | 41792-0531 | A-41792-0531 | 41792-0565 | A-41792-0565 |
| 6 | 26-60-5060 | A-41792-0006 | 41792-0515 | A-41792-0515 | 41792-0532 | A-41792-0532 | 41792-0566 | A-41792-0566 |
| 7 | 26-60-5070 | A-41792-0007 | 41792-0516 | A-41792-0516 | 41792-0533 | A-41792-0533 | 41792-0567 | A-41792-0567 |
| 8 | 26-60-5080 | A-41792-0008 | 41792-0517 | A-41792-0517 | 41792-0534 | A-41792-0534 | 41792-0568 | A-41792-0568 |
| 9 | 26-60-5090 | A-41792-0009 | 41792-0518 | A-41792-0518 | 41792-0535 | A-41792-0535 | 41792-0569 | A-41792-0569 |
| 10 | 26-60-5100 | A-41792-0010 | 41792-0519 | A-41792-0519 | 41792-0536 | A-41792-0536 | 41792-0570 | A-41792-0570 |
| 11 | 26-60-5110 | A-41792-0011 | 41792-0520 | A-41792-0520 | 41792-0537 | A-41792-0537 | 41792-0571 | A-41792-0571 |
| 12 | 26-60-5120 | A-41792-0012 | 41792-0521 | A-41792-0521 | 41792-0538 | A-41792-0538 | 41792-0572 | A-41792-0572 |
| 13 | 26-60-5130 | A-41792-0013 | 41792-0522 | A-41792-0522 | 41792-0539 | A-41792-0539 | 41792-0573 | A-41792-0573 |
| 14 | 26-60-5140 | A-41792-0014 | 41792-0523 | A-41792-0523 | 41792-0540 | A-41792-0540 | 41792-0574 | A-41792-0574 |
| 15 | 26-60-5150 | A-41792-0015 | 41792-0524 | A-41792-0524 | 41792-0541 | A-41792-0541 | 41792-0575 | A-41792-0575 |
| 16 | 26-60-5160 | A-41792-0016 | 41792-0525 | A-41792-0525 | 41792-0542 | A-41792-0542 | 41792-0576 | A-41792-0576 |
| 17 | 26-60-5170 | A-41792-0017 | 41792-0526 | A-41792-0526 | 41792-0543 | A-41792-0543 | 41792-0577 | A-41792-0577 |
| 18 | 26-60-5180 | A-41792-0018 | 41792-0527 | A-41792-0527 | 41792-0544 | A-41792-0544 | 41792-0578 | A-41792-0578 |

| | | | |
|---------------------------------------|---|--|-------------------------------|
| REV: H6 | ECR/ECN INFORMATION: EC No.: UCP2008-2821 DATE: 6/23/2008 | TITLE: KK 156 HEADER ASSEMBLY FRICTION LOCK RIGHT ANGLE W/O PEGS | SHEET No. - 2 - |
| DOCUMENT NUMBER: SDA- 41792 | CREATED / REVISED BY: GAVERRILL | CHECKED BY: MKIPPER | APPROVED BY: FSMITH |

| OPTIONS | Group | A-41792-0019/0035 | Group | A-41792-0036/0050 | Group | A-41792-0051/0067 | Group | |
|----------|--------------|-------------------|--------------|-------------------|--------------|-------------------|--------------|-----------------|
| | Header No: | 41790-0002/0018 | Header No: | 41790-0004/0018 | Header No: | 41790-0002/0018 | Header No: | |
| | Pin No: | 2161-37(501) | Pin No: | 2161-37(102) | Pin No: | 2161-64(102) | Pin No: | |
| | Plating: | 501 – GOLD | Plating: | 102 – TIN | Plating: | 102 - TIN | Plating: | |
| | Pin Length L | 27.94 / 1.100 | Pin Length L | 27.94 / 1.100 | Pin Length L | 29.85 / 1.175 | Pin Length L | |
| | Mating M | 11.43 / .450 | Mating M | 11.43 / .450 | Mating M | 13.28 / .523 | Mating M | |
| | Gold Loc G | OVERALL | Gold Loc G | N/A | Gold Loc G | N/A | Gold Loc G | |
| | Height Y | 5.41 / .213 | Height Y | 5.41 / .213 | Height Y | 5.41 / .213 | Height Y | |
| | PC Tail P | 3.96/ .156 | PC Tail P | 3.96/ .156 | PC Tail P | 4.01 / .158 | PC Tail P | |
| | Tin Loc T | N/A | Tin Loc T | OVERALL | Tin Loc T | OVERALL | Tin Loc T | |
| | Voided Ckts | NONE | Voided Ckts | 4 | Voided Ckts | NONE | Voided Ckts | |
| Pack Per | PK-41792-002 | Pack Per | PK-41792-002 | Pack Per | PK-41792-002 | Pack Per | | |
| Ckts | Material No | Engineer Number | Material No | Engineer Number | Material No | Engineer Number | Material No | Engineer Number |
| 2 | 26-61-5020 | A-41792-0019 | | | | | | |
| 3 | 26-61-5030 | A-41792-0020 | | | | | | |
| 4 | 26-61-5040 | A-41792-0021 | 26-61-5043 | A-41792-0036 | 26-60-5041 | A-41792-0053 | | |
| 5 | 26-61-5050 | A-41792-0022 | 26-61-5053 | A-41792-0037 | | | | |
| 6 | 26-61-5060 | A-41792-0023 | 26-61-5063 | A-41792-0038 | | | | |
| 7 | 26-61-5070 | A-41792-0024 | 26-61-5073 | A-41792-0039 | | | | |
| 8 | 26-61-5080 | A-41792-0025 | 26-61-5083 | A-41792-0040 | | | | |
| 9 | 26-61-5090 | A-41792-0026 | 26-61-5093 | A-41792-0041 | | | | |
| 10 | 26-61-5100 | A-41792-0027 | 26-61-5103 | A-41792-0042 | | | | |
| 11 | 26-61-5110 | A-41792-0028 | 26-61-5113 | A-41792-0043 | | | | |
| 12 | 26-61-5120 | A-41792-0029 | 26-61-5123 | A-41792-0044 | | | | |
| 13 | 26-61-5130 | A-41792-0030 | 26-61-5133 | A-41792-0045 | | | | |
| 14 | 26-61-5140 | A-41792-0031 | 26-61-5143 | A-41792-0046 | | | | |
| 15 | 26-61-5150 | A-41792-0032 | 26-61-5153 | A-41792-0047 | | | | |
| 16 | 26-61-5160 | A-41792-0033 | 26-61-5163 | A-41792-0048 | | | | |
| 17 | 26-61-5170 | A-41792-0034 | 26-61-5173 | A-41792-0049 | | | | |
| 18 | 26-61-5180 | A-41792-0035 | 26-61-5183 | A-41792-0050 | | | | |

| | | | |
|---------------------------------------|---|--|-------------------------------|
| REV: H6 | ECR/ECN INFORMATION: EC No.: UCP2008-2821 DATE: 6/23/2008 | TITLE: KK 156 HEADER ASSEMBLY FRICTION LOCK RIGHT ANGLE W/O PEGS | SHEET No. - 3 - |
| DOCUMENT NUMBER: SDA- 41792 | CREATED / REVISED BY: GAVERRILL | CHECKED BY: MKIPPER | APPROVED BY: FSMITH |

| OPTIONS | Group | A-41792-0198/0213 | Group | A-41792-0214/0227 | Group | A-41792-0242/0257 | Group | A-41792-0341/0352 |
|-------------|--------------|-------------------|--------------|-------------------|--------------|-------------------|--------------|-------------------|
| | Header No: | 41790-0002/0018 | Header No: | 41790-0005/0018 | Header No: | 41790-0003/0018 | Header No: | 41790-0007/0018 |
| | Pin No: | 2161-37(102) | Pin No: | 2161-37(102) | Pin No: | 2161-37(102) | Pin No: | 2161-37(102) |
| | Plating: | 102 – TIN | Plating: | 102 – TIN | Plating: | 102 – TIN | Plating: | 102 – TIN |
| | Pin Length L | 27.94/ 1.100 | Pin Length L | 27.94/ 1.100 | Pin Length L | 27.94/ 1.100 | Pin Length L | 27.94/ 1.100 |
| | Mating M | 11.43 / .450 | Mating M | 11.43 / .450 | Mating M | 11.43 / .450 | Mating M | 11.43 / .450 |
| | Gold Loc G | N/A | Gold Loc G | N/A | Gold Loc G | N/A | Gold Loc G | N/A |
| | Height Y | 5.41 / .213 | Height Y | 5.41 / .213 | Height Y | 5.41 / .213 | Height Y | 5.41 / .213 |
| | PC Tail P | 3.96 / .156 | PC Tail P | 3.96 / .156 | PC Tail P | 3.96 / .156 | PC Tail P | 3.96 / .156 |
| | Tin Loc T | OVERALL | Tin Loc T | OVERALL | Tin Loc T | OVERALL | Tin Loc T | OVERALL |
| Voided Ckts | 2 | Voided Ckts | 5 | Voided Ckts | 3 | Voided Ckts | 7 | |
| Pack Per | PK-41792-002 | Pack Per | PK-41792-002 | Pack Per | PK-41792-002 | Pack Per | PK-41792-002 | |
| Ckts | Material No | Engineer Number | Material No | Engineer Number | Material No | Engineer Number | Material No | Engineer Number |
| 2 | | | | | | | | |
| 3 | 26-62-5031 | A-41792-0198 | | | 26-62-5035 | A-41792-0242 | | |
| 4 | 26-62-5041 | A-41792-0199 | | | 26-62-5045 | A-41792-0243 | | |
| 5 | 26-62-5051 | A-41792-0200 | 41792-0214 | A-41792-0214 | 26-62-5055 | A-41792-0244 | | |
| 6 | 26-62-5061 | A-41792-0201 | 26-62-5060 | A-41792-0215 | 26-62-5065 | A-41792-0245 | | |
| 7 | 26-62-5071 | A-41792-0202 | 41792-0216 | A-41792-0216 | 26-62-5075 | A-41792-0246 | 41792-0341 | A-41792-0341 |
| 8 | 26-62-5081 | A-41792-0203 | 41792-0217 | A-41792-0217 | 26-62-5085 | A-41792-0247 | 41792-0342 | A-41792-0342 |
| 9 | 26-62-5091 | A-41792-0204 | 41792-0218 | A-41792-0218 | 26-62-5095 | A-41792-0248 | 41792-0343 | A-41792-0343 |
| 10 | 26-62-5101 | A-41792-0205 | 26-62-5100 | A-41792-0219 | 26-62-5105 | A-41792-0249 | 26-62-5104 | A-41792-0344 |
| 11 | 26-62-5111 | A-41792-0206 | 41792-0220 | A-41792-0220 | 26-62-5115 | A-41792-0250 | 26-62-5114 | A-41792-0345 |
| 12 | 26-62-5121 | A-41792-0207 | 41792-0221 | A-41792-0221 | 26-62-5125 | A-41792-0251 | 41792-0346 | A-41792-0346 |
| 13 | 26-62-5131 | A-41792-0208 | 41792-0222 | A-41792-0222 | 26-62-5135 | A-41792-0252 | 41792-0347 | A-41792-0347 |
| 14 | 26-62-5141 | A-41792-0209 | 41792-0223 | A-41792-0223 | 26-62-5145 | A-41792-0253 | 41792-0348 | A-41792-0348 |
| 15 | 26-62-5151 | A-41792-0210 | 41792-0224 | A-41792-0224 | 26-62-5155 | A-41792-0254 | 41792-0349 | A-41792-0349 |
| 16 | 26-62-5161 | A-41792-0211 | 41792-0225 | A-41792-0225 | 26-62-5165 | A-41792-0255 | 41792-0350 | A-41792-0350 |
| 17 | 26-62-5171 | A-41792-0212 | 41792-0226 | A-41792-0226 | 26-62-5175 | A-41792-0256 | 41792-0351 | A-41792-0351 |
| 18 | 26-62-5181 | A-41792-0213 | 41792-0227 | A-41792-0227 | 26-62-5185 | A-41792-0257 | 41792-0352 | A-41792-0352 |

| | | | |
|---------------------------------------|---|--|-------------------------------|
| REV: H6 | ECR/ECN INFORMATION: EC No.: UCP2008-2821 DATE: 6/23/2008 | TITLE: KK 156 HEADER ASSEMBLY FRICTION LOCK RIGHT ANGLE W/O PEGS | SHEET No. - 4 - |
| DOCUMENT NUMBER: SDA- 41792 | CREATED / REVISED BY: GAVERRILL | CHECKED BY: MKIPPER | APPROVED BY: FSMITH |

| OPTIONS | Group | A-41792-0460/0471 | Group | A-41792-0472/0483 | Group | A-41792-0484/0493 | Group | A-41792-0579/0595 |
|-------------|--------------|-------------------|--------------|-------------------|--------------|-------------------|--------------|-------------------|
| | Header No: | 41790-0007/0018 | Header No: | 41790-0007/0018 | Header No: | 41790-0009/0018 | Header No: | 41790-0002/0018 |
| | Pin No: | 2161-37(102) | Pin No: | 2161-37(102) | Pin No: | 2161-37(102) | Pin No: | 2161-37(154) |
| | Plating: | 102 – TIN | Plating: | 102 – TIN | Plating: | 102 – TIN | Plating: | 154 – TIN |
| | Pin Length L | 27.94 / 1.100 | Pin Length L | 27.94 / 1.100 | Pin Length L | 27.94 / 1.100 | Pin Length L | 27.94 / 1.100 |
| | Mating M | 11.43 / .450 | Mating M | 11.43 / .450 | Mating M | 11.43 / .450 | Mating M | 11.43 / .450 |
| | Gold Loc G | N/A | Gold Loc G | N/A | Gold Loc G | N/A | Gold Loc G | N/A |
| | Height Y | 5.41 / .213 | Height Y | 5.41 / .213 | Height Y | 5.41 / .213 | Height Y | 5.41 / .213 |
| | PC Tail P | 3.96 / .156 | PC Tail P | 3.96 / .156 | PC Tail P | 3.96 / .156 | PC Tail P | 3.96 / .156 |
| | Tin Loc T | OVERALL | Tin Loc T | OVERALL | Tin Loc T | OVERALL | Tin Loc T | OVERALL |
| Voided Ckts | 2, 7 | Voided Ckts | 4, 7 | Voided Ckts | 2, 5, 9 | Voided Ckts | NONE | |
| Pack Per | PK-41792-002 | Pack Per | PK-41792-002 | Pack Per | PK-41792-002 | Pack Per | PK-41792-002 | |
| Ckts | Material No | Engineer Number | Material No | Engineer Number | Material No | Engineer Number | Material No | Engineer Number |
| 2 | | | | | | | 50-29-1904 | A-41792-0579 |
| 3 | | | | | | | 50-29-1905 | A-41792-0580 |
| 4 | | | | | | | 50-29-1906 | A-41792-0581 |
| 5 | | | | | | | 50-29-1907 | A-41792-0582 |
| 6 | | | | | | | 50-29-1908 | A-41792-0583 |
| 7 | 41792-0460 | A-41792-0460 | | A-41792-0472 | | | 50-29-1909 | A-41792-0584 |
| 8 | 41792-0461 | A-41792-0461 | 26-60-5087 | A-41792-0473 | | | 50-29-1910 | A-41792-0585 |
| 9 | 26-60-5096 | A-41792-0462 | | A-41792-0474 | | A-41792-0484 | 50-29-1911 | A-41792-0586 |
| 10 | 41792-0463 | A-41792-0463 | | A-41792-0475 | | A-41792-0485 | 50-29-1912 | A-41792-0587 |
| 11 | 41792-0464 | A-41792-0464 | | A-41792-0476 | | A-41792-0486 | 50-29-1913 | A-41792-0588 |
| 12 | 41792-0465 | A-41792-0465 | | A-41792-0477 | 26-60-5128 | A-41792-0487 | 50-29-1914 | A-41792-0589 |
| 13 | 41792-0466 | A-41792-0466 | | A-41792-0478 | | A-41792-0488 | 50-29-1915 | A-41792-0590 |
| 14 | 41792-0467 | A-41792-0467 | | A-41792-0479 | | A-41792-0489 | 50-29-1916 | A-41792-0591 |
| 15 | 41792-0468 | A-41792-0468 | | A-41792-0480 | | A-41792-0490 | 50-29-1917 | A-41792-0592 |
| 16 | 41792-0469 | A-41792-0469 | | A-41792-0481 | | A-41792-0491 | 50-29-1918 | A-41792-0593 |
| 17 | 41792-0470 | A-41792-0470 | | A-41792-0482 | | A-41792-0492 | 50-29-1919 | A-41792-0594 |
| 18 | 41792-0471 | A-41792-0471 | | A-41792-0483 | | A-41792-0493 | 50-29-1920 | A-41792-0595 |

| | | | |
|---------------------------------------|---|--|-------------------------------|
| REV: H6 | ECR/ECN INFORMATION: EC No.: UCP2008-2821 DATE: 6/23/2008 | TITLE: KK 156 HEADER ASSEMBLY FRICTION LOCK RIGHT ANGLE W/O PEGS | SHEET No. - 5 - |
| DOCUMENT NUMBER: SDA- 41792 | CREATED / REVISED BY: GAVERRILL | CHECKED BY: MKIPPER | APPROVED BY: FSMITH |

| OPTIONS | Group | A-41792-0596/0612 | Group | A-41792-0613/0629 | Group | A-41792-0484/0493 | Group | |
|-------------|--------------|-------------------|--------------|-------------------|--------------|-------------------|--------------|-----------------|
| | Header No: | 41790-0007/0018 | Header No: | 41790-0009/0018 | Header No: | 41790-0009/0018 | Header No: | |
| | Pin No: | 2161-37(154) | Pin No: | 2161-37(154) | Pin No: | 2161-37(154) | Pin No: | |
| | Plating: | 154 – TIN | Plating: | 154 – TIN | Plating: | 154 – TIN | Plating: | |
| | Pin Length L | 27.94 / 1.100 | Pin Length L | 27.94 / 1.100 | Pin Length L | 27.94 / 1.100 | Pin Length L | |
| | Mating M | 11.43 / .450 | Mating M | 11.43 / .450 | Mating M | 11.43 / .450 | Mating M | |
| | Gold Loc G | N/A | Gold Loc G | N/A | Gold Loc G | N/A | Gold Loc G | |
| | Height Y | 5.41 / .213 | Height Y | 5.41 / .213 | Height Y | 5.41 / .213 | Height Y | |
| | PC Tail P | 3.96 / .156 | PC Tail P | 3.96 / .156 | PC Tail P | 3.96 / .156 | PC Tail P | |
| | Tin Loc T | OVERALL | Tin Loc T | OVERALL | Tin Loc T | OVERALL | Tin Loc T | |
| Voided Ckts | 2, 7 | Voided Ckts | 2, 5, 9 | Voided Ckts | 2, 5, 9 | Voided Ckts | | |
| Pack Per | PK-41792-002 | Pack Per | PK-41792-002 | Pack Per | PK-41792-002 | Pack Per | | |
| Ckts | Material No | Engineer Number | Material No | Engineer Number | Material No | Engineer Number | Material No | Engineer Number |
| 2 | | | | | | | | |
| 3 | | | | | | | | |
| 4 | | | | | | | | |
| 5 | | | | | | | | |
| 6 | | | | | | | | |
| 7 | 50-29-1926 | A-41792-0601 | | | | | | |
| 8 | 50-29-1927 | A-41792-0602 | | | | | | |
| 9 | 50-29-1928 | A-41792-0603 | 50-29-1945 | A-41792-0620 | | A-41792-0630 | | |
| 10 | 50-29-1929 | A-41792-0604 | 50-29-1946 | A-41792-0621 | | A-41792-0631 | | |
| 11 | 50-29-1930 | A-41792-0605 | 50-29-1947 | A-41792-0622 | | A-41792-0632 | | |
| 12 | 50-29-1931 | A-41792-0606 | 50-29-1948 | A-41792-0623 | 41792-0633 | A-41792-0633 | | |
| 13 | 50-29-1932 | A-41792-0607 | 50-29-1949 | A-41792-0624 | | A-41792-0634 | | |
| 14 | 50-29-1933 | A-41792-0608 | 50-29-1950 | A-41792-0625 | | A-41792-0635 | | |
| 15 | 50-29-1934 | A-41792-0609 | 50-29-1951 | A-41792-0626 | | A-41792-0636 | | |
| 16 | 50-29-1935 | A-41792-0610 | 50-29-1952 | A-41792-0627 | | A-41792-0637 | | |
| 17 | 50-29-1936 | A-41792-0611 | 50-29-1953 | A-41792-0628 | | A-41792-0638 | | |
| 18 | 50-29-1937 | A-41792-0612 | 50-29-1954 | A-41792-0629 | | A-41792-0639 | | |

| | | | |
|---------------------------------------|---|--|-------------------------------|
| REV: H6 | ECR/ECN INFORMATION: EC No.: UCP2008-2821 DATE: 6/23/2008 | TITLE: KK 156 HEADER ASSEMBLY FRICTION LOCK RIGHT ANGLE W/O PEGS | SHEET No. - 6 - |
| DOCUMENT NUMBER: SDA- 41792 | CREATED / REVISED BY: GAVERRILL | CHECKED BY: MKIPPER | APPROVED BY: FSMITH |