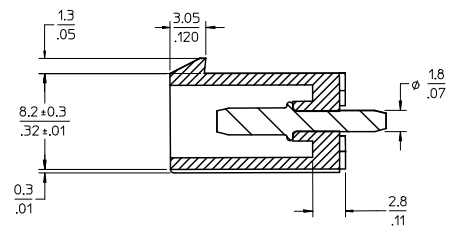
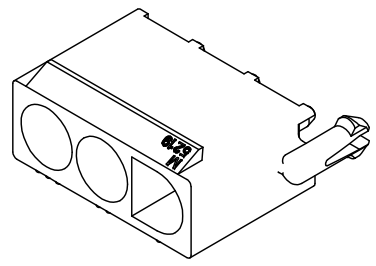
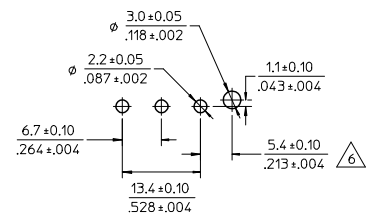
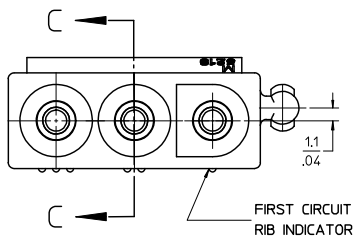


13 12 11 10 9 8 7 6 5 4 3 2 1

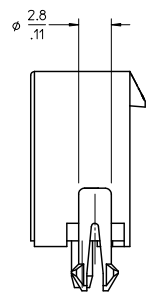
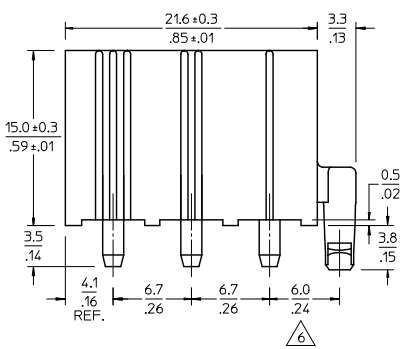
CIRCUITS	EDP NO.	ENG. NO.
3	39287038	5219-03A-201
	15311036	5219-03A



SECTION C-C

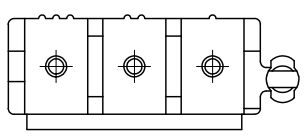


RECOMMENDED P.C. BOARD HOLE DIM. SCALE 2:1



NOTES:

- 1) MATERIAL:  
HOUSING: "BLANK" = NYLON 6/6, UL94V-2, COLOR: NATURAL  
"201" = NYLON 6/6, UL94V-0, COLOR: NATURAL  
TERMINAL: C2700W BRASS
- 2) FINISH: 0.000003(1.0000001) MIN. TIN OVERALL OVER  
0.000001(0.0000004) MIN. NICKEL OVERALL
- 3) PRODUCT SPECIFICATION: PS-3191-003
- 4) PACKAGING: NONE
- 5) MATES WITH: 3191-03R SERIES
- △ DIFFERENCE OF DIMENSION TO PREVENT RISE FROM P.C.B.
- 7) PARTS CONFORM TO CLASS 'B' REQUIREMENTS OF COSMETIC SPECIFICATION PS-45499-002.



REMOVED DIMENSION E.C. NO. UEP2009-2076 DRAWN: TRENES 2009/02/24 CHKD: AELMG 2009/03/13 APPR: F SMITH 2009/04/15	QUALITY SYMBOLS ▽=0 ▽=0	GENERAL TOLERANCES (UNLESS SPECIFIED)		DIMENSION STYLE		SCALE	DESIGN UNITS	THIRD ANGLE PROJECTION		
		mm	INCH	MM/IN		4:1	METRIC			
		4 PLACES ± --- ± ---		DRAWN BY	DATE	TITLE				
		3 PLACES ± --- ± .005		TASAKAWA	1995/11/18	NEW INTERNATIONAL CONN. HEADER AND ASSY.				
		2 PLACES ± 0.13 ± .010		CHECKED BY	DATE	MOLEX INCORPORATED				
		1 PLACE ± 0.25 ± ---		HIRAMOT	1995/11/18					
		ANGULAR ±1/2°		APPROVED BY	DATE	SD-5219-03A-*				
				FUKUSHIM	1995/11/18					
		DRAFT WHERE APPLICABLE MUST REMAIN WITHIN DIMENSIONS		MATERIAL NO.		DOCUMENT NO.	SHEET NO.			
				SEE CHART			1 OF 1			
				THIS DRAWING CONTAINS INFORMATION THAT IS PROPRIETARY TO MOLEX INCORPORATED AND SHOULD NOT BE USED WITHOUT WRITTEN PERMISSION						

12 11 10 9 8 7 6 5 4 3 2 1