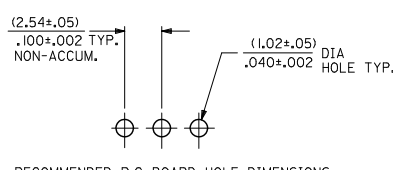
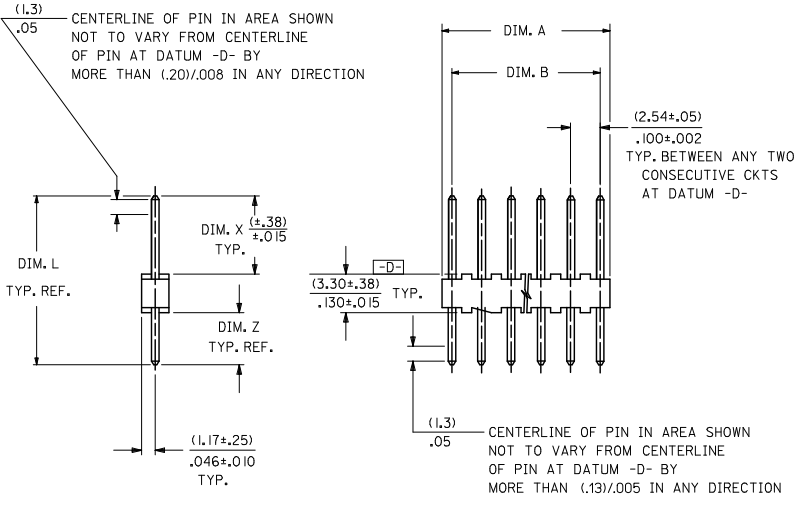


13 12 11 10 9 8 7 6 5 4 3 2 1



- NOTES:
1. MATERIAL: NYLON, UL94V-0, COLOR: WHITE
  2. FINISH: 102: 0.00508/.000200 MIN TIN OVER 0.00254/.000100 MIN COPPER  
501: 0.00051/.000020 MIN GOLD OVER 0.00076/.000030 MIN NICKEL
  3. PARTS CONFORM TO PRODUCT SPECIFICATION PS-10-07.
  4. BULK PACK PER PK-4030-001.
  5. PINS MUST CONFORM TO SOLDERABILITY SPECIFICATION SMES-152.
  6. PIN PUSH OUT FORCE: 2 LBS. MIN.
  7. PARTS ARE STACKABLE END TO END AND SIDE TO SIDE ON (2.54)/.100 CENTERS.
  8. SEE SDA-4030-002 FOR CUSTOMER DEFINED OPTIONS.
  9. THIS PART CONFORMS TO CLASS B REQUIREMENTS OF COSMETIC SPECIFICATION PS-45499-002.

CKTS. NO. OF	DIM. B	DIM. A
2	.100 ± .002 ( 2.54 ± .05 )	.190 ± .008 ( 4.83 ± .20 )
3	.200 ± .005 ( 5.08 ± .13 )	.290 ± .008 ( 7.37 ± .20 )
4	.300 ± .005 ( 7.62 ± .13 )	.390 ± .008 ( 9.91 ± .20 )
5	.400 ± .005 ( 10.16 ± .13 )	.490 ± .008 ( 12.45 ± .20 )
6	.500 ± .006 ( 12.70 ± .15 )	.590 ± .009 ( 14.99 ± .23 )
7	.600 ± .006 ( 15.24 ± .15 )	.690 ± .009 ( 17.53 ± .23 )
8	.700 ± .006 ( 17.78 ± .15 )	.790 ± .009 ( 20.07 ± .23 )
9	.800 ± .007 ( 20.32 ± .18 )	.890 ± .010 ( 22.61 ± .25 )
10	.900 ± .007 ( 22.86 ± .18 )	.990 ± .010 ( 25.15 ± .25 )
11	1.000 ± .007 ( 25.40 ± .18 )	1.090 ± .010 ( 27.69 ± .25 )
12	1.100 ± .008 ( 27.94 ± .20 )	1.190 ± .011 ( 30.23 ± .28 )
13	1.200 ± .008 ( 30.48 ± .20 )	1.290 ± .011 ( 32.77 ± .28 )
14	1.300 ± .008 ( 33.02 ± .20 )	1.390 ± .011 ( 35.31 ± .28 )
15	1.400 ± .008 ( 35.56 ± .20 )	1.490 ± .011 ( 37.85 ± .28 )
16	1.500 ± .008 ( 38.10 ± .20 )	1.590 ± .011 ( 40.39 ± .28 )
17	1.600 ± .009 ( 40.64 ± .23 )	1.690 ± .012 ( 42.93 ± .30 )
18	1.700 ± .009 ( 43.18 ± .23 )	1.790 ± .012 ( 45.47 ± .30 )
19	1.800 ± .009 ( 45.72 ± .23 )	1.890 ± .012 ( 48.01 ± .30 )
20	1.900 ± .009 ( 48.26 ± .23 )	1.990 ± .012 ( 50.55 ± .30 )
21	2.000 ± .010 ( 50.80 ± .25 )	2.090 ± .013 ( 53.09 ± .33 )
22	2.100 ± .010 ( 53.34 ± .25 )	2.190 ± .013 ( 55.63 ± .33 )
23	2.200 ± .010 ( 55.88 ± .25 )	2.290 ± .013 ( 58.17 ± .33 )
24	2.300 ± .010 ( 58.42 ± .25 )	2.390 ± .013 ( 60.71 ± .33 )
25	2.400 ± .011 ( 60.96 ± .28 )	2.490 ± .014 ( 63.25 ± .36 )
26	2.500 ± .011 ( 63.50 ± .28 )	2.590 ± .014 ( 65.79 ± .36 )
27	2.600 ± .011 ( 66.04 ± .28 )	2.690 ± .014 ( 68.33 ± .36 )
28	2.700 ± .011 ( 68.58 ± .28 )	2.790 ± .014 ( 70.87 ± .36 )

<b>UPDATE NOTES</b> DEC NO. UEP2008-007 DRAWN BY: CHKOCHSCHMIDT CHECKED BY: APPRESMITH DATE: 2007/10/11 DATE: 2007/10/12	<b>QUALITY SYMBOLS</b> ▽=0 ▽=0	<b>GENERAL TOLERANCES (UNLESS SPECIFIED)</b>		<b>DIMENSION STYLE</b> MM/IN		<b>SCALE</b> ---		<b>DESIGN UNITS</b> INCH		<b>THIRD ANGLE PROJECTION</b>			
		4 PLACES ± --- ± ---	3 PLACES ± --- ± ---	2 PLACES ± --- ± ---	1 PLACE ± --- ± ---	mm	INCH	DRAWN BY: SAMIEC CHECKED BY: PATEL DATE: 1988/06/10 DATE: 1988/06/10		TITLE: KK HEADER (2.54)/.100 CENTERS STD CATALOG PRODUCTS			
		ANGULAR ±1/2°				DRAFT WHERE APPLICABLE MUST REMAIN WITHIN DIMENSIONS		SEE CHART		MATERIAL NO.: SDA-4030		DOCUMENT NO.: MOLEX INCORPORATED	
		CHZ				THIS DRAWING CONTAINS INFORMATION THAT IS PROPRIETARY TO MOLEX INCORPORATED AND SHOULD NOT BE USED WITHOUT WRITTEN PERMISSION		SHEET NO.: 1 OF 2					

ib\_frame\_C.P.ME.T Rev. E 2006/04/15 12 11 10 9 8 7 6 5 4 3 2 1

13 12 11 10 9 8 7 6 5 4 3 2 1

ENG. NO.	PIN NO.	DIM. L	DIM. X	DIM. Z	PACKAGE PER	EDP NO. IN COL NO
A-4030 -NA(102)	2766 -K(102)	.560 (14,22)	.295 (7,49 )	.135 (3,43 )	PK-4030-001 BULK	1
A-4030 -NA(50 I)	2766 -K(50 I)	.560 (14,22)	.295 (7,49 )	.135 (3,43 )	PK-4030-001 BULK	2
A- -	-	( )	( )	( )		
A- -	-	( )	( )	( )		
A- -	-	( )	( )	( )		
A- -	-	( )	( )	( )		

COLUMN NO. 1			COLUMN NO. 2		
EDP NO.	ENG. NO.	NO OF SLOTS	EDP NO.	ENG. NO.	NO OF SLOTS
22-03-202I	A-4030-02A(102)	2	22-10-202I	A-4030-02A(50 I)	2
22-03-203I	A-4030-03A(102)	3	22-10-203I	A-4030-03A(50 I)	3
22-03-204I	A-4030-04A(102)	4	22-10-204I	A-4030-04A(50 I)	4
22-03-205I	A-4030-05A(102)	5	22-10-205I	A-4030-05A(50 I)	5
22-03-206I	A-4030-06A(102)	6	22-10-206I	A-4030-06A(50 I)	6
22-03-207I	A-4030-07A(102)	7	22-10-207I	A-4030-07A(50 I)	7
22-03-208I	A-4030-08A(102)	8	22-10-208I	A-4030-08A(50 I)	8
22-03-209I	A-4030-09A(102)	9	22-10-209I	A-4030-09A(50 I)	9
22-03-210I	A-4030-10A(102)	10	22-10-210I	A-4030-10A(50 I)	10
22-03-211I	A-4030-11A(102)	11	22-10-211I	A-4030-11A(50 I)	11
22-03-212I	A-4030-12A(102)	12	22-10-212I	A-4030-12A(50 I)	12
22-03-213I	A-4030-13A(102)	13	22-10-213I	A-4030-13A(50 I)	13
22-03-214I	A-4030-14A(102)	14	22-10-214I	A-4030-14A(50 I)	14
22-03-215I	A-4030-15A(102)	15	22-10-215I	A-4030-15A(50 I)	15
22-03-216I	A-4030-16A(102)	16	22-10-216I	A-4030-16A(50 I)	16
22-03-217I	A-4030-17A(102)	17	22-10-217I	A-4030-17A(50 I)	17
22-03-218I	A-4030-18A(102)	18	22-10-218I	A-4030-18A(50 I)	18
22-03-219I	A-4030-19A(102)	19	22-10-219I	A-4030-19A(50 I)	19
22-03-220I	A-4030-20A(102)	20	22-10-220I	A-4030-20A(50 I)	20
22-03-221I	A-4030-21A(102)	21	22-10-221I	A-4030-21A(50 I)	21
22-03-222I	A-4030-22A(102)	22	22-10-222I	A-4030-22A(50 I)	22
22-03-223I	A-4030-23A(102)	23	22-10-223I	A-4030-23A(50 I)	23
22-03-224I	A-4030-24A(102)	24	22-10-224I	A-4030-24A(50 I)	24
22-03-225I	A-4030-25A(102)	25	22-10-225I	A-4030-25A(50 I)	25
22-03-226I	A-4030-26A(102)	26	22-10-226I	A-4030-26A(50 I)	26
22-03-227I	A-4030-27A(102)	27	22-10-227I	A-4030-27A(50 I)	27
22-03-228I	A-4030-28A(102)	28	22-10-228I	A-4030-28A(50 I)	28

EDP NO.	ENG. NO.	NO OF SLOTS	EDP NO.	ENG. NO.	NO OF SLOTS
22-03-202I	A-4030-02A(102)	2	22-10-202I	A-4030-02A(50 I)	2
22-03-203I	A-4030-03A(102)	3	22-10-203I	A-4030-03A(50 I)	3
22-03-204I	A-4030-04A(102)	4	22-10-204I	A-4030-04A(50 I)	4
22-03-205I	A-4030-05A(102)	5	22-10-205I	A-4030-05A(50 I)	5
22-03-206I	A-4030-06A(102)	6	22-10-206I	A-4030-06A(50 I)	6
22-03-207I	A-4030-07A(102)	7	22-10-207I	A-4030-07A(50 I)	7
22-03-208I	A-4030-08A(102)	8	22-10-208I	A-4030-08A(50 I)	8
22-03-209I	A-4030-09A(102)	9	22-10-209I	A-4030-09A(50 I)	9
22-03-210I	A-4030-10A(102)	10	22-10-210I	A-4030-10A(50 I)	10
22-03-211I	A-4030-11A(102)	11	22-10-211I	A-4030-11A(50 I)	11
22-03-212I	A-4030-12A(102)	12	22-10-212I	A-4030-12A(50 I)	12
22-03-213I	A-4030-13A(102)	13	22-10-213I	A-4030-13A(50 I)	13
22-03-214I	A-4030-14A(102)	14	22-10-214I	A-4030-14A(50 I)	14
22-03-215I	A-4030-15A(102)	15	22-10-215I	A-4030-15A(50 I)	15
22-03-216I	A-4030-16A(102)	16	22-10-216I	A-4030-16A(50 I)	16
22-03-217I	A-4030-17A(102)	17	22-10-217I	A-4030-17A(50 I)	17
22-03-218I	A-4030-18A(102)	18	22-10-218I	A-4030-18A(50 I)	18
22-03-219I	A-4030-19A(102)	19	22-10-219I	A-4030-19A(50 I)	19
22-03-220I	A-4030-20A(102)	20	22-10-220I	A-4030-20A(50 I)	20
22-03-221I	A-4030-21A(102)	21	22-10-221I	A-4030-21A(50 I)	21
22-03-222I	A-4030-22A(102)	22	22-10-222I	A-4030-22A(50 I)	22
22-03-223I	A-4030-23A(102)	23	22-10-223I	A-4030-23A(50 I)	23
22-03-224I	A-4030-24A(102)	24	22-10-224I	A-4030-24A(50 I)	24
22-03-225I	A-4030-25A(102)	25	22-10-225I	A-4030-25A(50 I)	25
22-03-226I	A-4030-26A(102)	26	22-10-226I	A-4030-26A(50 I)	26
22-03-227I	A-4030-27A(102)	27	22-10-227I	A-4030-27A(50 I)	27
22-03-228I	A-4030-28A(102)	28	22-10-228I	A-4030-28A(50 I)	28

<b>UPDATE TITLE BLOCK</b> DEC NO. UCP2008-0077 2007/10/11 DRAWN BY: CHKOLSCHMIDT 2007/10/11 APPR: SMITH 2007/10/12	QUALITY SYMBOLS ▽=0 ▽=0	GENERAL TOLERANCES (UNLESS SPECIFIED)		DIMENSION STYLE IN/MM		SCALE --- INCH	DESIGN UNITS INCH	THIRD ANGLE PROJECTION	
		4 PLACES ±--- ±---	mm	INCH	DRAWN BY	DATE	TITLE KK HEADER (2.54)/.100 CENTERS STD CATALOG PRODUCTS		
		3 PLACES ±--- ±---			CHECKED BY	DATE	MOLEX INCORPORATED		
		2 PLACES ±--- ±---			APPROVED BY	DATE	MATERIAL NO. SDA-4030		
1 PLACE ±--- ±---			LENZ	1993/07/15	SHEET NO. 2 OF 2		THIS DRAWING CONTAINS INFORMATION THAT IS PROPRIETARY TO MOLEX INCORPORATED AND SHOULD NOT BE USED WITHOUT WRITTEN PERMISSION		
DRAFT WHERE APPLICABLE MUST REMAIN WITHIN DIMENSIONS		SEE CHART		SIZE C		THIS DRAWING CONTAINS INFORMATION THAT IS PROPRIETARY TO MOLEX INCORPORATED AND SHOULD NOT BE USED WITHOUT WRITTEN PERMISSION			

12 11 10 9 8 7 6 5 4 3 2 1