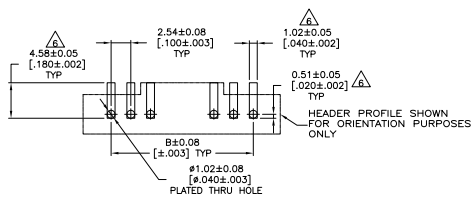
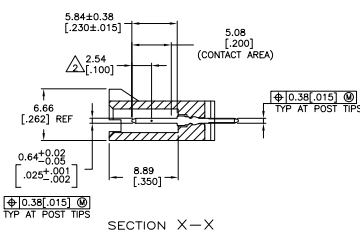
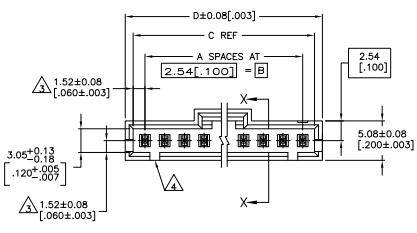
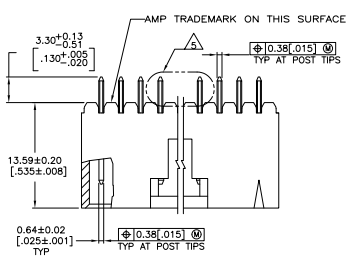


REV	DATE	DESCRIPTION	BY	CHK	APP
AD	00				
F		EC 003C 0789 04	AFR805	BSV	JLG
F1		REVISED PER ECO-09-020689	02SEP09	KK	AEG



RECOMMENDED PC BOARD MOUNTING DIMENSIONS
RECOMMENDED STENCIL THICKNESS = 0.25[.010]

- △ 0.00038[0.00015] GOLD IN THE CONTACT AREA, 0.00254-0.00508[0.00100-0.00200] MATTE TIN- LEAD ON THE SOLDER TAIL, ALL OVER 0.00127[0.000050] NICKEL
- △ POINT OF MEASUREMENT FOR PLATING THICKNESS
- △ THE NOTED DIMENSIONS APPLY FROM THE BASIC DIMENSION LINE (NOT THE POST CENTERLINE) TO THE SURFACE INDICATED
- △ ONE POLARIZATION SLOT FOR 2 POSITION ASSEMBLY ONLY.
- △ HOLD DOWN UNTIL SOLDERED, CONFIGURATION ACCEPTS 0.69-2.03[.027-.080] THICK PRINTED CIRCUIT BOARD (SEE DETAIL Z)
- △ DIMENSIONS NOTED ARE FOR SOLDER STENCIL LAYOUT FOR USE WITH 1.57±0.20[.062±.008] THICK PRINTED CIRCUIT BOARDS.
- 7. PARTS ARE PACKAGED IN GANG OF TUBES
- △ 0.00038[0.00015] GOLD IN THE CONTACT AREA, 0.00254-0.00508[0.00100-0.00200] MATTE TIN ON THE SOLDER TAIL, ALL OVER 0.00127[0.000050] NICKEL
- △ OBSOLETE PARTS: OBSOLETE CIS STREAMLINING PER D.RENAUD/D.SINIS

REV	DATE	DESCRIPTION	BY	CHK	APP
9		SUPERCEDED			
9		OBSOLETE			
9		SUPERCEDED			
9		SUPERCEDED			
9		SUPERCEDED			

REV	DATE	DESCRIPTION	BY	CHK	APP	
△	66.04	64.01	60.96	24	25	7-104909-4
△	63.50	61.47	58.42	23	24	7-104909-3
△	60.96	58.93	55.88	22	23	7-104909-2
△	58.42	56.39	53.34	21	22	7-104909-1
△	55.88	53.85	50.80	20	21	7-104909-0
△	53.34	51.31	48.26	19	20	6-104909-9
△	50.80	48.77	45.72	18	19	6-104909-8
△	48.26	46.23	43.18	17	18	6-104909-7
△	45.72	43.69	40.64	16	17	6-104909-6
△	43.18	41.15	38.1	15	16	6-104909-5
△	40.64	38.61	35.56	14	15	6-104909-4
△	38.1	36.07	33.02	13	14	6-104909-3
△	35.56	33.53	30.48	12	13	6-104909-2
△	33.02	30.99	27.94	11	12	6-104909-1
△	30.48	28.45	25.40	10	11	6-104909-0
△	27.94	25.91	22.87	9	10	6-104909-9
△	25.40	23.37	20.34	8	9	6-104909-8
△	22.87	20.84	17.81	7	8	6-104909-7
△	20.34	18.31	15.28	6	7	6-104909-6
△	17.81	15.78	12.75	5	6	6-104909-5
△	15.28	13.25	10.22	4	5	6-104909-4
△	12.75	10.72	7.69	3	4	6-104909-3
△	10.22	8.19	5.16	2	3	6-104909-2
△	7.69	5.66	2.63	1	2	6-104909-1

PLATING	D	C	B	A	NO. OF POSTS	PART NUMBER
9						

THIS DRAWING IS A CONTROLLED DOCUMENT. SEE TABLE.

REVISED PER ECO-09-020689

CUSTOMER DRAWING

DATE: 4/1

REV: 1

APP: F1