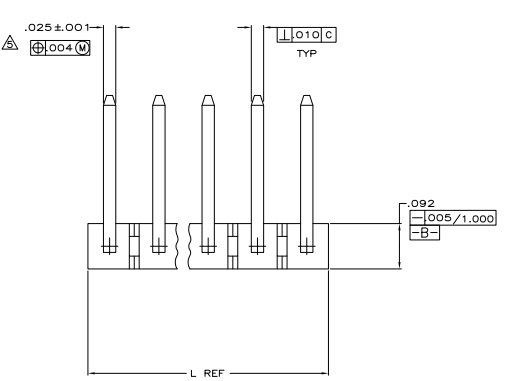
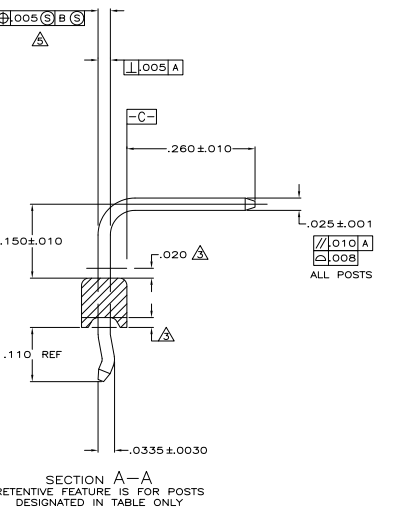
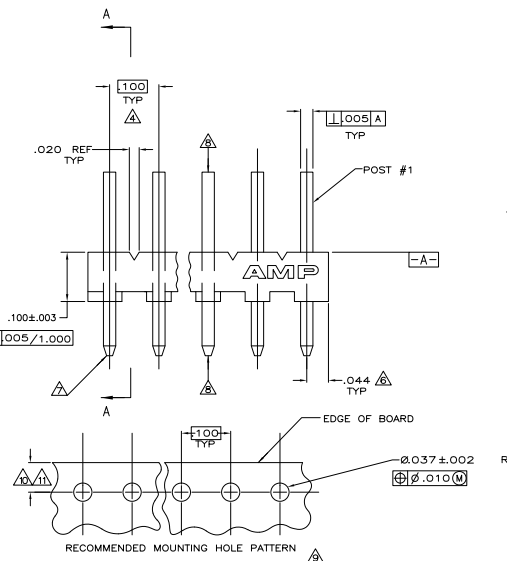


REV	DATE	DESCRIPTION	BY	CHK	APP
CM 00					
E2		REVISED PER EDD-11-004917			11MMR11 RK HMR

- △ MATERIAL:  
 BASE: THERMOPLASTIC POLYESTER,UL 94V-0 (NATURAL).  
 POST: COPPER ALLOY (TIN OR TIN-LEAD PLATED, .00150 MIN THK).
- 2 PARTS MUST COMPLY WITH AMP SOLDERABILITY SPEC 109-11-2.
- △ PLASTIC AROUND POST PERMISSIBLE IN THIS AREA ONLY.
  - △ DIMENSION APPLIES WHEN HEADER IS HELD FLAT.
  - △ MEASURED AT [-A]
  - △ COORDINATE DIMENSION APPLIES FROM CENTER OF ACTUAL FEATURE.
  - △ RADIUS AT TIP PERMITTED, BOTH ENDS.
  - △ POST MUST WITHSTAND 3.0 LB (13 NEWTONS) MIN AXIAL FORCE IN BOTH DIRECTIONS WITHOUT DISLODGING.
  - △ TOLERANCES APPLY TO SOLDER SIDE OF BOARD.
  - △ DIMENSION SHOULD BE .060 MIN WHEN MATING WITH A MTA-100 CONNECTOR ASSEMBLY OR A CST-100 CONNECTOR.
  - △ DIMENSION SHOULD BE .060-.340 WHEN MATING CONNECTOR WIRING EXITS HOUSING INTO BOARD.
12. AMP LOGO MAY OR MAY NOT APPEAR ON MOLDING HOUSING.



LEADFREE	NO. OF POSITIONS	IN	MM	NO. OF CIRCUITS	PART NUMBER
YES	1,14,28	28	2.788(70.82)	28	5-644694-8
YES	1,14,27	27	2.688(68.28)	27	5-644694-7
YES	1,13,26	26	2.588(65.74)	26	5-644694-6
YES	1,13,25	25	2.488(63.20)	25	5-644694-5
YES	1,12,24	24	2.388(60.66)	24	5-644694-4
YES	1,12,23	23	2.288(58.12)	23	5-644694-3
YES	1,11,22	22	2.188(55.58)	22	5-644694-2
YES	1,11,21	21	2.088(53.04)	21	5-644694-1
YES	1,10,20	20	1.988(50.50)	20	5-644694-0
YES	1,10,19	19	1.888(47.96)	19	4-644694-9
YES	1,8,18	18	1.788(45.42)	18	4-644694-8
YES	1,9,17	17	1.688(42.88)	17	4-644694-7
YES	1,8,16	16	1.588(40.34)	16	4-644694-6
YES	1,8,15	15	1.488(37.80)	15	4-644694-5
YES	1,7,14	14	1.388(35.26)	14	4-644694-4
YES	1,7,13	13	1.288(32.72)	13	4-644694-3
YES	1,6,12	12	1.188(30.18)	12	4-644694-2
YES	1,6,11	11	1.088(27.64)	11	4-644694-1
YES	1,10	10	.988(25.10)	10	4-644694-0
YES	1,9	9	.888(22.56)	9	3-644694-9
YES	1,8	8	.788(20.02)	8	3-644694-8
YES	1,7	7	.688(17.48)	7	3-644694-7
YES	1,6	6	.588(14.94)	6	3-644694-6
YES	1,5	5	.488(12.40)	5	3-644694-5
YES	1,4	4	.388(9.86)	4	3-644694-4
YES	1,3	3	.288(7.32)	3	3-644694-3
YES	1,2	2	.188(4.78)	2	3-644694-2



- SUPERSEDED BY 5-644694-8
- SUPERSEDED BY 5-644694-7
- SUPERSEDED BY 5-644694-6
- SUPERSEDED BY 5-644694-5
- 1,12,24 24 2.388(60.66) 24 2-644694-4
- SUPERSEDED BY 5-644694-3
- SUPERSEDED BY 5-644694-2
- SUPERSEDED BY 5-644694-1
- SUPERSEDED BY 5-644694-0
- 1,10,19 19 1.888(47.96) 19 1-644694-9
- SUPERSEDED BY 4-644694-9
- SUPERSEDED BY 4-644694-8
- SUPERSEDED BY 4-644694-7
- SUPERSEDED BY 4-644694-6
- SUPERSEDED BY 4-644694-5
- SUPERSEDED BY 4-644694-4
- SUPERSEDED BY 4-644694-3
- SUPERSEDED BY 4-644694-2
- SUPERSEDED BY 4-644694-1
- SUPERSEDED BY 4-644694-0
- SUPERSEDED BY 3-644694-9
- SUPERSEDED BY 3-644694-8
- SUPERSEDED BY 3-644694-7
- SUPERSEDED BY 3-644694-6
- SUPERSEDED BY 3-644694-5
- SUPERSEDED BY 3-644694-4
- SUPERSEDED BY 3-644694-3
- SUPERSEDED BY 3-644694-2

LEADFREE	NO. OF POSITIONS	IN	MM	NO. OF CIRCUITS	PART NUMBER
NO	1,14,28	28	2.788(70.82)	28	2-644694-8
NO	1,14,27	27	2.688(68.28)	27	2-644694-7
NO	1,13,26	26	2.588(65.74)	26	2-644694-6
NO	1,13,25	25	2.488(63.20)	25	2-644694-5
NO	1,12,24	24	2.388(60.66)	24	2-644694-4
NO	1,12,23	23	2.288(58.12)	23	2-644694-3
NO	1,11,22	22	2.188(55.58)	22	2-644694-2
NO	1,11,21	21	2.088(53.04)	21	2-644694-1
NO	1,10,20	20	1.988(50.50)	20	2-644694-0
NO	1,10,19	19	1.888(47.96)	19	1-644694-9
NO	1,8,18	18	1.788(45.42)	18	1-644694-8
NO	1,9,17	17	1.688(42.88)	17	1-644694-7
NO	1,8,16	16	1.588(40.34)	16	1-644694-6
NO	1,8,15	15	1.488(37.80)	15	1-644694-5
NO	1,7,14	14	1.388(35.26)	14	1-644694-4
NO	1,7,13	13	1.288(32.72)	13	1-644694-3
NO	1,6,12	12	1.188(30.18)	12	1-644694-2
NO	1,6,11	11	1.088(27.64)	11	1-644694-1
NO	1,10	10	.988(25.10)	10	1-644694-0
NO	1,9	9	.888(22.56)	9	644694-9
NO	1,8	8	.788(20.02)	8	644694-8
NO	1,7	7	.688(17.48)	7	644694-7
NO	1,6	6	.588(14.94)	6	644694-6
NO	1,5	5	.488(12.40)	5	644694-5
NO	1,4	4	.388(9.86)	4	644694-4
NO	1,3	3	.288(7.32)	3	644694-3
NO	1,2	2	.188(4.78)	2	644694-2

THIS DRAWING IS A CONTROLLED DOCUMENT. THE CUSTOMER DRAWING IS CONTROLLED BY THE CUSTOMER.

MTA-100 HEADER ASSEMBLY, NARROW, .025 SQUARE, RIGHT ANGLE POST WITH RETENTIVE LEAD-TIN PLATED.

CUSTOMER DRAWING A100779 (G) = 644694

488 (2/11)