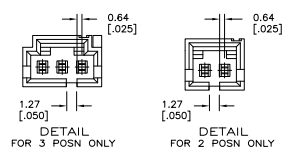
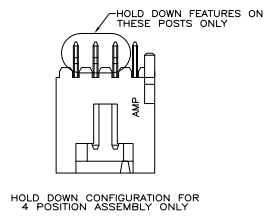
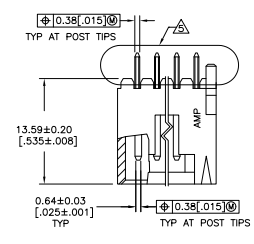
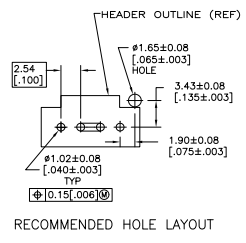
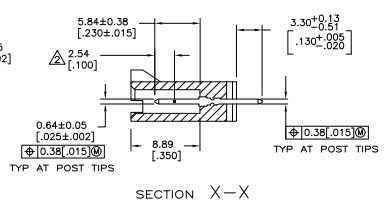
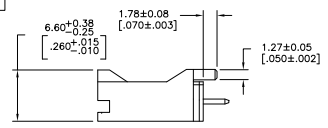
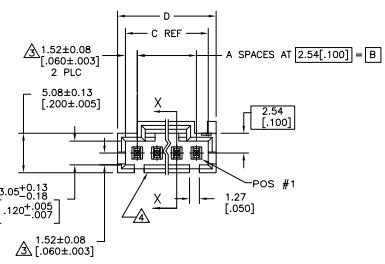


REV	DATE	DESCRIPTION	BY	CHK	APP
AD	00				
A02		REVISED PER ECO-11-004820			



- ▲ 0.00254-0.00508 [0.00100-0.0200] BRIGHT TIN-LEAD OVER 0.00127 [.000050] NICKEL.
- ▲ POINT OF MEASUREMENT FOR PLATING THICKNESS THESE DIMENSIONS APPLY WHERE THE POST INTERSECTS THE HOUSING
- ▲ ON ASSEMBLIES WITH FOUR OR MORE POSITIONS, TWO POLARIZATION SLOTS.
- ▲ SELECT POST TAILS FORMED TO PROVIDE CONNECTOR HOLD DOWN UNTIL SOLDERED. CONFIGURATION ACCEPTS 0.69-2.03 [.027--.080] THICK PRINTED CIRCUIT BOARD. (SEE DETAIL Z).
- ▲ MATERIAL: HOUSING- FLAME RETARDANT THERMOPLASTIC, COLOR-BLACK. POSTS- BRASS.
- ▲ 0.00254-0.00508 [0.00100-0.0200] BRIGHT TIN OVER 0.00127 [.000050] NICKEL.
- ▲ HIGH TEMPERATURE CONFIGURATION.
- ▲ 0.00254-0.00508 [0.00100-0.0200] MATTE TIN OVER 0.00127 [.000050] NICKEL.
- ▲ OBSOLETE PARTS: OBSOLETE CIS STREAMLINING PER D.RENAUD/D.SINISI



DETAIL Z  
 POST DETAIL TYP  
 2 POST MINIMUM

REV	DATE	DESCRIPTION	BY	CHK	APP
AD	00				
A02		REVISED PER ECO-11-004820			

REV	DATE	DESCRIPTION	BY	CHK	APP	
▲	27.94 [1.100]	25.91 [1.020]	22.86 [900]	9	10	5-104450-9
▲	25.4 [1.000]	23.37 [920]	20.32 [800]	8	9	5-104450-8
▲	22.86 [900]	20.83 [820]	17.78 [700]	7	8	5-104450-7
▲	20.32 [800]	18.29 [720]	15.24 [600]	6	7	5-104450-6
▲	17.78 [700]	15.75 [620]	12.7 [500]	5	6	5-104450-5
▲	15.24 [600]	13.21 [520]	10.16 [400]	4	5	5-104450-4
▲	12.7 [500]	10.67 [420]	7.62 [300]	3	4	5-104450-3
▲	10.16 [400]	8.13 [320]	5.08 [200]	2	3	5-104450-2
▲	7.62 [300]	5.09 [200]	2.54 [100]	1	2	5-104450-1
▲	15.24 [600]	13.21 [520]	10.16 [400]	4	5	5-104450-2
▲	10.16 [400]	8.13 [320]	5.08 [200]	2	3	5-104450-1
▲	12.7 [500]	10.67 [420]	7.62 [300]	3	4	5-104450-3
▲	27.94 [1.100]	25.91 [1.020]	22.86 [900]	9	10	104450-9
▲	25.4 [1.000]	23.37 [920]	20.32 [800]	8	9	104450-8
▲	22.86 [900]	20.83 [820]	17.78 [700]	7	8	104450-7
▲	20.32 [800]	18.29 [720]	15.24 [600]	6	7	104450-6
▲	17.78 [700]	15.75 [620]	12.7 [500]	5	6	104450-5
▲	15.24 [600]	13.21 [520]	10.16 [400]	4	5	104450-4
▲	12.7 [500]	10.67 [420]	7.62 [300]	3	4	104450-3
▲	10.16 [400]	8.13 [320]	5.08 [200]	2	3	104450-2
▲	7.62 [300]	5.09 [200]	2.54 [100]	1	2	104450-1

REMARKS	PLATING	D	C	B	A	NO OF POSTS	ASSEMBLY PART NUMBER

THIS DRAWING IS A CONTROLLED DOCUMENT.		REV	DATE	DESCRIPTION	BY	CHK	APP
REV	DATE	DESCRIPTION	BY	CHK	APP		
108-25034		WITH LATCH, SINGLE ROW, 100 CL, .025 SQ POSTS, PCB ORIENTATION AND RETENTIVE POSTS.					
SIZE	DATE	REV	DATE	DESCRIPTION	BY	CHK	APP
A1	00779	G	104450				