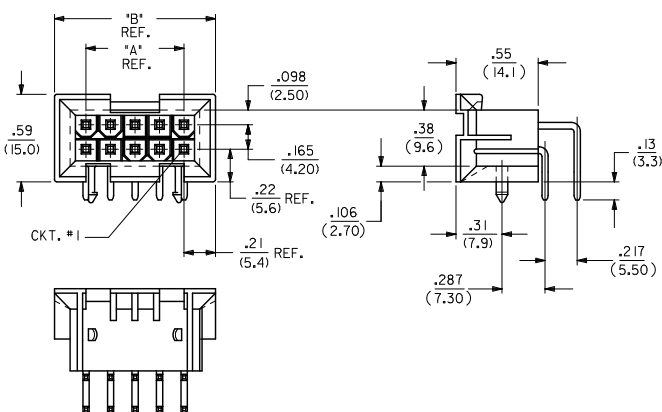


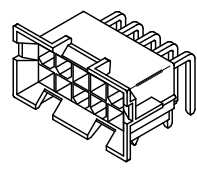
CIRCUIT SIZE	DIM. "A"	DIM. "B"
6	.331 (8.40)	.76 (19.2)
8	.496 (12.60)	.92 (23.4)
10	.661 (16.80)	1.09 (27.6)
12	.827 (21.00)	1.25 (31.8)
14	.992 (25.20)	1.42 (36.0)
16	1.157 (29.40)	1.58 (40.2)
18	1.323 (33.60)	1.75 (44.4)
20	1.488 (37.80)	1.91 (48.6)
22	1.654 (42.00)	2.08 (52.8)
24	1.819 (46.20)	2.24 (57.0)



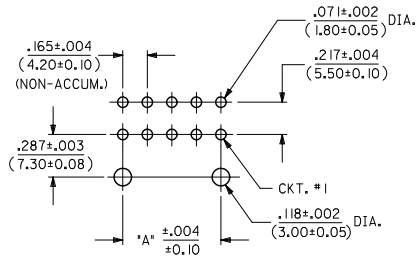
NOTES:

- MATERIAL: HOUSING: "A" = NYLON 6/6, U.L. 94V-2, COLOR: NATURAL. "B" = NYLON 6/6, U.L. 94V-0, COLOR: NATURAL. TERMINAL: BRASS ALLOY 260.
- TERMINAL PLATING:
 - .000100/(.00254) MIN. BRIGHT TIN OVER .000050/(.00127) MIN. NICKEL OVERALL.
 - .000030/(.00076) MIN. GOLD OVER .000050/(.00127) MIN. NICKEL OVERALL.
 - .000100/(.00254) MIN. MATTE TIN OVER .000050/(.00127) MIN. NICKEL OVERALL.
 - .000030/(.00076) MIN. GOLD AND .000100/(.00254) MIN. MATTE TIN OVER .000050/(.00127) MIN. NICKEL OVERALL.

*THE PRIMARY SHIPPING CARTON WILL BE LABELED "COMPLIANT TO ROHS DIRECTIVE 2002/95/EC AND ELV ANNEX II OF DIRECTIVE 2000/53/EC." CARTONS WITHOUT THIS LABEL MAY CONTAIN PRODUCT WITH TIN-LEAD PLATING.
- PRODUCT SPECIFICATION AND PROCESSING PARAMETERS: SEE PS-5556-002
- PACKAGING SPECIFICATION: PK-42404-002.
- 4-24 CKT. PARTS MATE WITH MINI-FIT JR. RECEPTACLES #5557, #42385 AND #42474. 2 CKT. PART MATES WITH #42385 AND #42474 ONLY.
- PART ALLOWS FOR UP TO .100/(2.54) MISALIGNMENT WITH MATING RECEPTACLE IN ANY DIRECTION. SEE MATING CONNECTOR DRAWINGS FOR SPECIFIC ALLOWANCES.
- CONNECTOR ASSEMBLIES ARE NOT TO BE MATED OR UNMATED WHILE CIRCUITS ARE LIVE.
- A MAXIMUM TOLERANCE OF .050/(1.27) ALLOWS FOR 2 POINTS OF ELECTRICAL CONTACT. A MAXIMUM TOLERANCE OF .020/(.51) ALLOWS FOR 4 POINTS OF CONTACT.
- DISCOLORATION IN THE BANDOLIER CARRIER AREA OF THE PIN IS INHERENT TO THE PLATING PROCESS AND IS DUE TO THE MASKING EFFECT OF THE CARRIER. THIS DISCOLORATION IS IN A NON-FUNCTIONAL AREA OF THE PIN AND WILL NOT AFFECT THE PERFORMANCE OF THE HEADER ASSEMBLY.
- PART IS NOT DESIGNED FOR CURRENT SHARING.
- PART IS NOT INTENDED TO PROVIDE ANY ALIGNMENT OF CUSTOMER COMPONENTS OR MODULES, SUCH AS POWER SUPPLIES AND CHASSIS.
- PARTS CONFORM TO CLASS 'B' REQUIREMENTS OF COSMETIC SPECIFICATION PS-45499-002.*

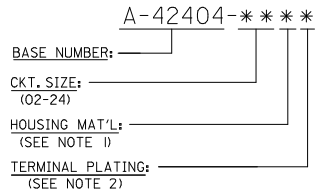


A-42404-****



RECOMMENDED HOLE LAYOUT FOR .070/(1.78) MAX. THICK P.C. BOARD VIEWED FROM COMPONENT SIDE

LEGEND:



Part Number	Material	Plating		
--B2, --B4	42474--2 I, 5556-PBGS*P	94V-0	PHOS. BRZ.	GOLD
--A2, --A4	42474--1 I, 5556-PBGS*P	94V-2	PHOS. BRZ.	TIN
--B1, --B3	42474--2 I, 5556-PBS*P	94V-0	PHOS. BRZ.	GOLD
--A1, --A3	42474--1 I, 5556-PBS*P	94V-2	PHOS. BRZ.	TIN
--B2, --B4	42474--2 I, 5556-GS*P	94V-0	BRASS	GOLD
--A2, --A4	42474--1 I, 5556-GS*P	94V-2	BRASS	TIN
--B1, --B3	42474--2 I, 5556-S*P	94V-0	PHOS. BRZ.	GOLD
--A1, --A3	42474--1 I, 5556-S*P	94V-2	PHOS. BRZ.	TIN
--B2, --B4	A-42385--D2	94V-0	PHOS. BRZ.	GOLD
--A2, --A4	A-42385--C2	94V-2	PHOS. BRZ.	TIN
--B1, --B3	A-42385--D1	94V-0	PHOS. BRZ.	GOLD
--A1, --A3	A-42385--C1	94V-2	PHOS. BRZ.	TIN
--B2, --B4	A-42385--B2	94V-0	BRASS	GOLD
--A2, --A4	A-42385--A2	94V-2	BRASS	TIN
--B1, --B3	A-42385--B1	94V-0	BRASS	GOLD
--A1, --A3	A-42385--A1	94V-2	BRASS	TIN

R.A. HEADER	MATING CONNECTOR	HSG. MAT'L.	TERM. MAT'L.	PLATING
A-42404				

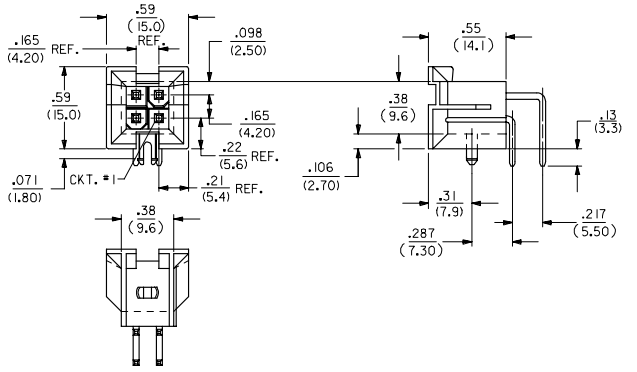
REVISE NOTES EC NO. UCP2010-0864 DRWN: JAGUILAR 2010/01/18 CHKD: BELL 2010/01/06 APPR: SMITH 2010/03/16	QUALITY SYMBOLS ▽=0 ▽=0	GENERAL TOLERANCES (UNLESS SPECIFIED):		DIMENSION STYLE IN/MM		SCALE 1:1	DESIGN UNITS METRIC	THIRD ANGLE PROJECTION	
		4 PLACES ±.25 ±.015	mm	INCH	DRAWN BY	DATE	TITLE MINI-FIT JR. 2-24 CKT RIGHT ANGLE HEADER ASSY (BLIND MATE)		
		3 PLACES ±.38 ±.015			CHKD BY	DATE	MOLEX INCORPORATED		
		1 PLACE ±.38 ±.015			APPROVED BY	DATE	SEE SHTS 3&4 SDA-42404-****		
DRAFT WHERE APPLICABLE MUST REMAIN WITHIN DIMENSIONS		ANGULAR ±1/2°		MATERIAL NO.		DOCUMENT NO.		SHEET NO.	
				R2		SHT 1 OF 4		1 OF 4	

4	R
3	R2
2	R
1	R2
SHT REV.	

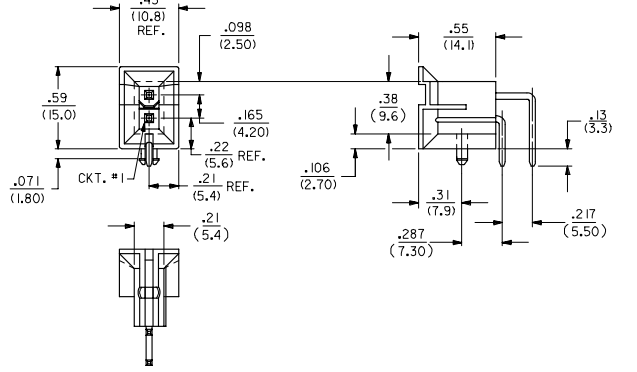
13 12 11 10 9 8 7 6 5 4 3 2 1

J
I
H
G
F
E
D
C
B
A

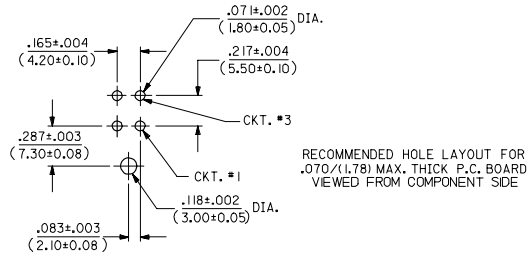
J
I
H
G
F
E
D
C
B
A



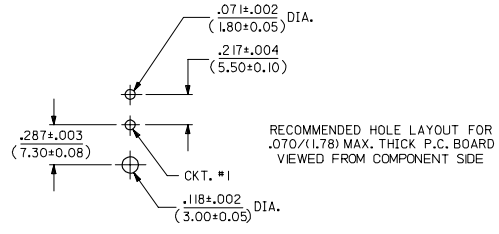
A-42404-04**



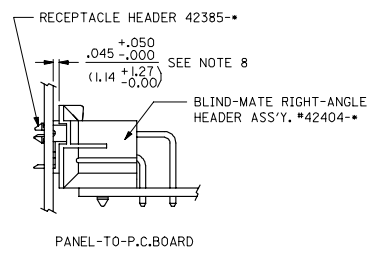
A-42404-02**



RECOMMENDED HOLE LAYOUT FOR
.070/(1.78) MAX. THICK P.C. BOARD
VIEWED FROM COMPONENT SIDE



RECOMMENDED HOLE LAYOUT FOR
.070/(1.78) MAX. THICK P.C. BOARD
VIEWED FROM COMPONENT SIDE



PANEL-TO-P.C.BOARD

SEE SHEET 1 EC NO: UCP2006-1780 DRAWN BY: JCP CHECKED BY: JCP APPR: JCP DATE: 2006/02/08	QUALITY SYMBOLS ▽=0 ▽=0	GENERAL TOLERANCES (UNLESS SPECIFIED) 4 PLACES ± .10 3 PLACES ± .15 2 PLACES ± .25 1 PLACE ± .38 ANGULAR ±1/2°	DIMENSION STYLE IN/MM	SCALE 2:1	DESIGN UNITS METRIC	THIRD ANGLE PROJECTION
	DRAWN BY: RWK CHECKED BY: RJK APPROVED BY: RAS DATE: 1989/02/07	TITLE MINI-FIT JR. 2-24 CKT RIGHT ANGLE HEADER ASSY (BLIND MATE)	MATERIAL NO. SEE SHTS 3&4	DOCUMENT NO. SDA-42404-*****	SHEET NO. 2 OF 4	MOLEX INCORPORATED

12 11 10 9 8 7 6 5 4 3 2 1

