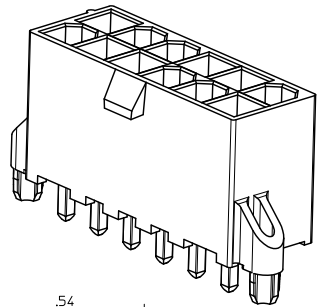
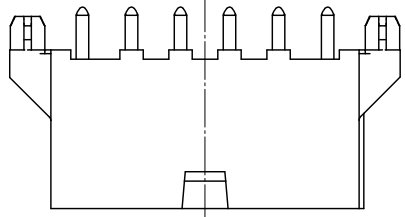
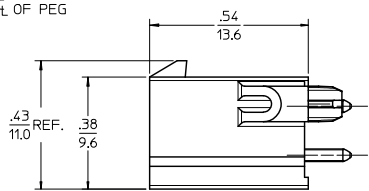
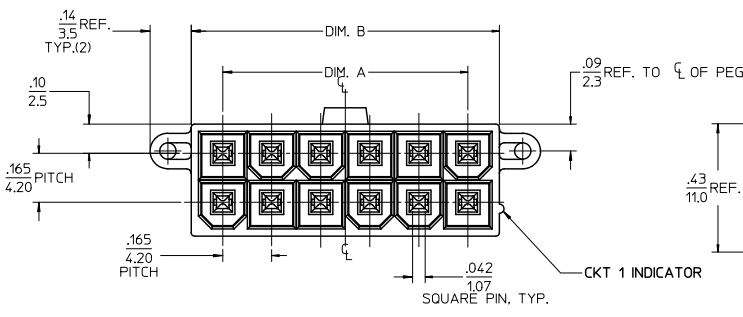


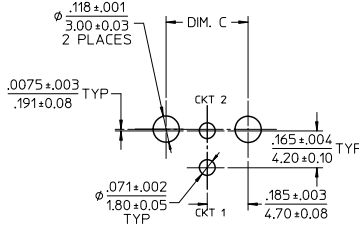
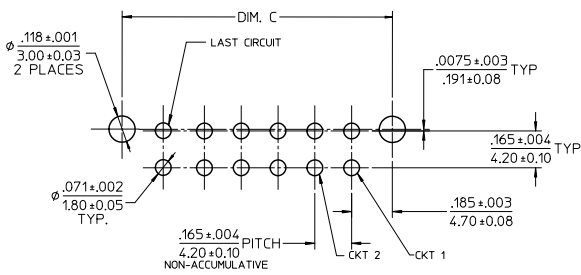
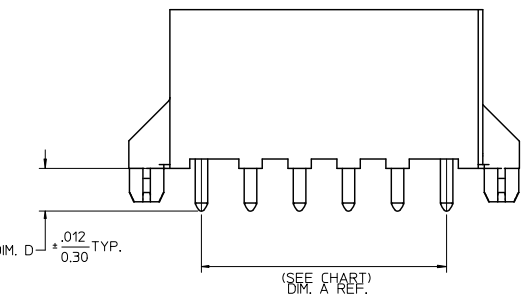
13 12 11 10 9 8 7 6 5 4 3 2 1



CIRCUIT SIZE	DIM. A	DIM. B	DIM. C
02	NA	0.21/5.4	0.37/9.4
04	0.165/4.20	0.38/9.6	0.535/13.60
06	0.331/8.40	0.54/13.8	0.701/17.80
08	0.496/12.60	0.71/18.0	0.866/22.00
10	0.661/16.80	0.87/22.2	1.031/26.20
12	0.827/21.00	1.04/26.4	1.197/30.40
14	0.992/25.20	1.21/30.6	1.362/34.60
16	1.160/29.40	1.37/34.8	1.528/38.80
18	1.323/33.60	1.54/39.0	1.693/43.00
20	1.488/37.80	1.70/43.2	1.858/47.20
22	1.654/42.00	1.87/47.4	2.024/51.40
24	1.819/46.20	2.03/51.6	2.189/55.60



ISOMETRIC VIEW
(12 CKT - SHOWN)



LAYOUT FOR
4-24 CIRCUIT

LAYOUT FOR
2 CIRCUIT

RECOMMENDED PCB HOLE LAYOUT COMPONENT SIDE
(SCALE 3:1)

- NOTES:
1. MATERIALS:
HOUSING - LIQUID CRYSTAL POLYMER (LCP), COLOR: BLACK
TERMINAL - BRASS ALLOY C26000
 2. TERMINAL PLATING:
TIN= .000100/0.00254 MIN MATTE TIN OVER
.000050/0.00127 MIN NICKEL OVERALL
GOLD= .000030/0.00076 MIN. SELECT GOLD OVER
.000100/0.00254 MIN. SELECT MATTE TIN OVER
.000050/0.00127 MIN NICKEL OVERALL
 3. PRODUCT SPECIFICATION: PS-46207-001
 4. PACKAGING SPECIFICATION: TRAY PACK PER PK-46207-001
TAPE AND REEL PACK PER PK-46207-002
 5. PART CONFORMS TO CLASS "B" REQUIREMENTS OF COSMETIC SPECIFICATION PS-45499-002.

ADDED GOLD PIN EC NO. UCP2010-1779 DRWN: JAGUILAR 2010/08/17/06 CHKD: BELL 2010/08/22/06 APPR: SMITH 2010/08/22/06	QUALITY SYMBOLS ∇=0 ∇=0 ∇=0	GENERAL TOLERANCES (UNLESS SPECIFIED)		DIMENSION STYLE IN/MM		SCALE 4:1	DESIGN UNITS METRIC	THIRD ANGLE PROJECTION
		mm		INCH		DRAWN BY DROSCA	DATE 08/07/2006	TITLE
		4 PLACES ±.005		±.005		CHECKED BY BWIRKUS	DATE 08/07/2006	MINI-FIT RTC HI-TEMP VERTICAL HEADER IN LCP, W/PCB PEGS
		3 PLACES ±.013		±.010		APPROVED BY BWIRKUS	DATE 08/07/2006	MOLEX INCORPORATED
2 PLACES ±.025		±.025		ANGULAR ±1/2°		MATERIAL NO. SEE TABLE	DOCUMENT NO. SD-46207-001	SHEET NO. 1 OF 2
1 PLACE ±.025		±.025		DRAFT WHERE APPLICABLE MUST REMAIN WITHIN DIMENSIONS		THIS DRAWING CONTAINS INFORMATION THAT IS PROPRIETARY TO MOLEX INCORPORATED AND SHOULD NOT BE USED WITHOUT WRITTEN PERMISSION		

GOLD PLATING				
CIRCUIT SIZE	TAPE & REEL MATERIAL NUMBER	TRAY PACKED MATERIAL NUMBER	DIM. D	PCB THICKNESS
02	462077002 *	462075002 *	0.144/3.66	0.062
04	462077004 *	462075004 *	0.144/3.66	0.062
06	462077006 *	462075006 *	0.144/3.66	0.062
08	462077008 *	462075008 *	0.144/3.66	0.062
10	462077010 *	462075010 *	0.144/3.66	0.062
12	462077012 *	462075012 *	0.144/3.66	0.062
14	462077014 *	462075014 *	0.144/3.66	0.062
16	462077016 *	462075016 *	0.144/3.66	0.062
18	462077018 *	462075018 *	0.144/3.66	0.062
20	462077020 *	462075020 *	0.144/3.66	0.062
22	462077022 *	462075022 *	0.144/3.66	0.062
24	462077024 *	462075024 *	0.144/3.66	0.062
02				
04				
06				
08				
10				
12				
14				
16				
18				
20				
22				
24				

TIN PLATING				
CIRCUIT SIZE	TAPE & REEL MATERIAL NUMBER	TRAY PACKED MATERIAL NUMBER	DIM. D	PCB THICKNESS
02	462073002 *	462070002 *	0.144/3.66	0.062
04	462073004 *	462070004 *	0.144/3.66	0.062
06	462073006 *	462070006 *	0.144/3.66	0.062
08	462073008 *	462070008 *	0.144/3.66	0.062
10	462073010 *	462070010 *	0.144/3.66	0.062
12	462073012 *	462070012 *	0.144/3.66	0.062
14	462073014 *	462070014 *	0.144/3.66	0.062
16	462073016 *	462070016 *	0.144/3.66	0.062
18	462073018 *	462070018 *	0.144/3.66	0.062
20	462073020 *	462070020 *	0.144/3.66	0.062
22	462073022 *	462070022 *	0.144/3.66	0.062
24	462073024 *	462070024 *	0.144/3.66	0.062
02		462070102 *	0.176/4.46	0.093
04		462070104 *	0.176/4.46	0.093
06		462070106 *	0.176/4.46	0.093
08		462070108 *	0.176/4.46	0.093
10		462070110 *	0.176/4.46	0.093
12		462070112 *	0.176/4.46	0.093
14		462070114 *	0.176/4.46	0.093
16		462070116 *	0.176/4.46	0.093
18		462070118 *	0.176/4.46	0.093
20		462070120 *	0.176/4.46	0.093
22		462070122 *	0.176/4.46	0.093
24		462070124 *	0.176/4.46	0.093
02		462070202 *	0.207/5.26	0.125
04		462070204 *	0.207/5.26	0.125
06		462070206 *	0.207/5.26	0.125
08		462070208 *	0.207/5.26	0.125
10		462070210 *	0.207/5.26	0.125
12		462070212 *	0.207/5.26	0.125
14		462070214 *	0.207/5.26	0.125
16		462070216 *	0.207/5.26	0.125
18		462070218 *	0.207/5.26	0.125
20		462070220 *	0.207/5.26	0.125
22		462070222 *	0.207/5.26	0.125
24		462070224 *	0.207/5.26	0.125

* DESIGNATES PART NOT RELEASED CONTACT FACTORY FOR AVAILABILITY.

* DESIGNATES PART NOT RELEASED CONTACT FACTORY FOR AVAILABILITY.

SEE SHEET 1 EC NO. UEP2010-1779 DRW: JAGUILAR 20/08/2006 CHK: BELL 20/08/22 APPR: SMITH 20/08/22	QUALITY SYMBOLS 	GENERAL TOLERANCES (UNLESS SPECIFIED)		DIMENSION STYLE		SCALE	DESIGN UNITS	THIRD ANGLE PROJECTION 	
				IN/MM		1:1	METRIC		
		DRAWN BY DROSCA 08/07/2006		DATE		TITLE			MINI-FIT RTC HI-TEMP VERTICAL HEADER IN LCP, W/PCB PEGS MOLEX INCORPORATED
		CHECKED BY BWIRKUS 08/07/2006		DATE		MATERIAL NO. SD-46207-001			
APPROVED BY BWIRKUS 08/07/2006		DATE		DOCUMENT NO.		SHEET NO. 2 OF 2			
DRAFT WHERE APPLICABLE MUST REMAIN WITHIN DIMENSIONS		SEE CHART		THIS DRAWING CONTAINS INFORMATION THAT IS PROPRIETARY TO MOLEX INCORPORATED AND SHOULD NOT BE USED WITHOUT WRITTEN PERMISSION					