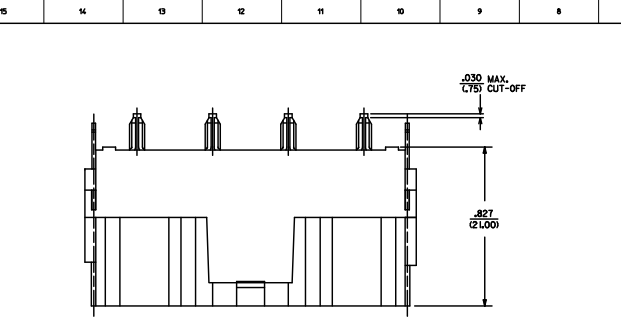
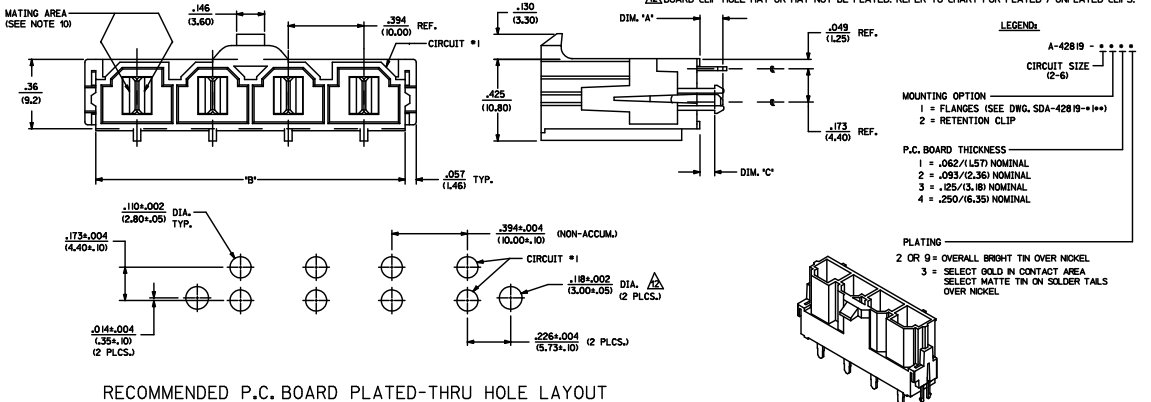


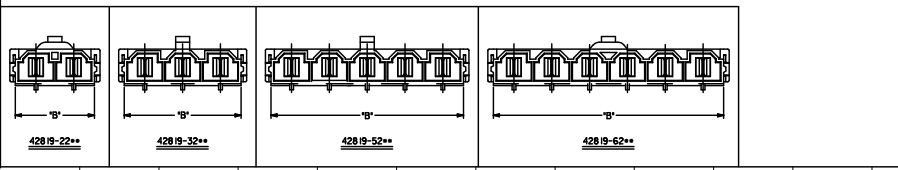
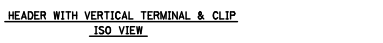
ITEM NUMBER	CKT. SIZE	DIM. "A"	DIM. "B"	DIM. "C"	TERMINAL PLATING	CLIP PLATING
42819-2212	2	.138(3.50)	.823(20.90)	.071(1.80)		
42819-2222	2	.201(5.10)	.823(20.90)	.102(2.60)		
42819-2229	2	.201(5.10)	.823(20.90)	.102(2.60)		
42819-2232	2	.201(5.10)	.823(20.90)	.134(3.40)		
42819-2242	2	.327(8.30)	.823(20.90)	.259(6.58)		
42819-3212	3	.138(3.50)	1.216(30.90)	.071(1.80)		
42819-3222	3	.201(5.10)	1.216(30.90)	.102(2.60)		
42819-3232	3	.201(5.10)	1.216(30.90)	.134(3.40)		
42819-3242	3	.327(8.30)	1.216(30.90)	.259(6.58)		
42819-4212	4	.138(3.50)	1.610(40.90)	.071(1.80)		
42819-4222	4	.201(5.10)	1.610(40.90)	.102(2.60)		
42819-4232	4	.201(5.10)	1.610(40.90)	.134(3.40)		
42819-4242	4	.327(8.30)	1.610(40.90)	.259(6.58)		
42819-5212	5	.138(3.50)	2.004(50.90)	.071(1.80)		
42819-5222	5	.201(5.10)	2.004(50.90)	.102(2.60)		
42819-5232	5	.201(5.10)	2.004(50.90)	.134(3.40)		
42819-5242	5	.327(8.30)	2.004(50.90)	.259(6.58)		
42819-6212	6	.138(3.50)	2.398(60.90)	.071(1.80)		
42819-6222	6	.201(5.10)	2.398(60.90)	.102(2.60)		
42819-6232	6	.201(5.10)	2.398(60.90)	.134(3.40)		
42819-6242	6	.327(8.30)	2.398(60.90)	.259(6.58)		
42819-2213	2	.138(3.50)	.823(20.90)	.071(1.80)		
42819-2223	2	.201(5.10)	.823(20.90)	.102(2.60)		
42819-2233	2	.201(5.10)	.823(20.90)	.134(3.40)		
42819-2243	2	.327(8.30)	.823(20.90)	.259(6.58)		
42819-3213	3	.138(3.50)	1.216(30.90)	.071(1.80)		
42819-3223	3	.201(5.10)	1.216(30.90)	.102(2.60)		
42819-3233	3	.201(5.10)	1.216(30.90)	.134(3.40)		
42819-3243	3	.327(8.30)	1.216(30.90)	.259(6.58)		
42819-4213	4	.138(3.50)	1.610(40.90)	.071(1.80)		
42819-4223	4	.201(5.10)	1.610(40.90)	.102(2.60)		
42819-4233	4	.201(5.10)	1.610(40.90)	.134(3.40)		
42819-4243	4	.327(8.30)	1.610(40.90)	.259(6.58)		
42819-5213	5	.138(3.50)	2.004(50.90)	.071(1.80)		
42819-5223	5	.201(5.10)	2.004(50.90)	.102(2.60)		
42819-5233	5	.201(5.10)	2.004(50.90)	.134(3.40)		
42819-5243	5	.327(8.30)	2.004(50.90)	.259(6.58)		
42819-6213	6	.138(3.50)	2.398(60.90)	.071(1.80)		
42819-6223	6	.201(5.10)	2.398(60.90)	.102(2.60)		
42819-6233	6	.201(5.10)	2.398(60.90)	.134(3.40)		
42819-6243	6	.327(8.30)	2.398(60.90)	.259(6.58)		



- NOTES:**
- 1) MATERIAL:
HOUSING MATERIAL: 30% GLASS-FILLED NYLON6/6, UL, 94V-0, COLOR: BLACK.
TERMINAL MATERIAL: ALLOY 5L.
 - 2) FINISH: 1 = .000100/.000254 MIN. +TIN OVER .000050/.000127 MIN. NICKEL.
3 = .000030/.000178 MIN. SELECT GOLD IN CONTACT AREA.
.000100/.000254 MIN. SELECT +TIN ON SOLDER TAILS OVER .000050/.000127 MIN. NICKEL.
* THE PRIMARY SHIPPING CARTON WILL BE LABELED "COMPLIANT TO ROHS DIRECTIVE 2002/95/EC AND ELV ANNEX II OF DIRECTIVE 2000/53/EC". CARTONS WITHOUT THIS LABEL MAY CONTAIN PRODUCT WITH TIN-LEAD.
 - 3) PRODUCT SPECIFICATION: PS-42819-001
 - 4) PACKAGING INFORMATION: PK-42819-2375
 - 5) PART MATES WITH MOLEX RECEPTACLE *42819-***2 WITH T.P.A.
 - 6) PART IS DESIGNED IN METRIC.
 - 7) AN "X" IN FRONT OF THE ITEM NUMBER INDICATES THE PART IS NOT TOOLED.
 - 8) THIS PART MEETS I.E.C. 950 AND U.L. 1950 REQUIREMENTS FOR CREEPAGE AND CLEARANCE AT 600 VAC AND 840 VDC.
 - 9) PARTS ARE NOT TO BE MATED OR UNMATED WHILE CIRCUITS ARE LIVE.
 - 10) WHEN USING OVERALL TIN PLATED TERMINALS FOR APPLICATIONS INVOLVING VIBRATION AND/OR THERMAL CYCLING, MOLEX STRONGLY RECOMMENDS THE USE OF NYE LUBRICANT (NYGOL 7600) ON THE MATING SURFACES OF THE TERMINAL.
 - 11) PARTS CONFORMS TO CLASS 'B' REQUIREMENTS OF COSMETIC SPECIFICATION PS-45499-002.
 - 12) BOARD CLIP HOLE MAY OR MAY NOT BE PLATED. REFER TO CHART FOR PLATED / UNPLATED CLIPS.



RECOMMENDED P.C. BOARD PLATED-THRU HOLE LAYOUT
(4 CKT. SHOWN FOR REF.)



ADD NOTE W/ P.C. BOARD LAYOUT 1. DIMENSIONING 2010/07/28 2. CHECKING 2010/07/28 3. CHKD-BELL 2010/07/28 4. APPROVAL 2010/07/28	QUALITY SYMBOLS 	GENERAL TOLERANCES (UNLESS SPECIFIED) <table border="1"> <tr><th></th><th>mm</th><th>INCH</th></tr> <tr><td>4 PLACES ±---</td><td>±---</td><td>±---</td></tr> <tr><td>3 PLACES ±---</td><td>±---</td><td>±---</td></tr> <tr><td>2 PLACES ±0.25</td><td>±---</td><td>±---</td></tr> <tr><td>1 PLACE ±0.40</td><td>±---</td><td>±---</td></tr> </table>		mm	INCH	4 PLACES ±---	±---	±---	3 PLACES ±---	±---	±---	2 PLACES ±0.25	±---	±---	1 PLACE ±0.40	±---	±---	DIMENSION STYLE IN/MM SCALE 4:1 DESIGN UNITS METRIC THIRD ANGLE PROJECTION	DRAWN BY KSM DATE 12/21/95 CHECKED BY SF DATE 12/21/95 APPROVED BY SF DATE 12/21/95	TITLE VERTICAL HEADER ASSEMBLY MINIFIT SR. SERIES MOLEX INCORPORATED DOCUMENT NO. SDA-42819-0002 SHEET NO. 1 OF 1
		mm	INCH																	
	4 PLACES ±---	±---	±---																	
	3 PLACES ±---	±---	±---																	
2 PLACES ±0.25	±---	±---																		
1 PLACE ±0.40	±---	±---																		
DRAFT WHERE APPLICABLE MUST REMAIN WITHIN DIMENSIONS			MATERIAL NO. SEE CHART SIZE THIS DRAWING CONTAINS INFORMATION THAT IS PROPRIETARY TO MOLEX INCORPORATED AND SHOULD NOT BE USED WITHOUT WRITTEN PERMISSION																	