

**PART NUMBER CODING**

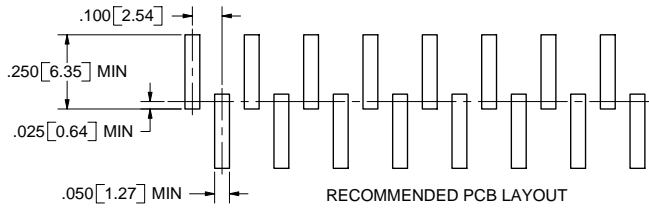
**G C SABN - M30**

NUMBER OF POSITIONS PER ROW

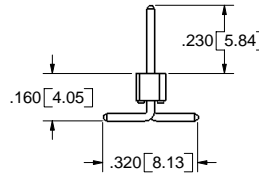
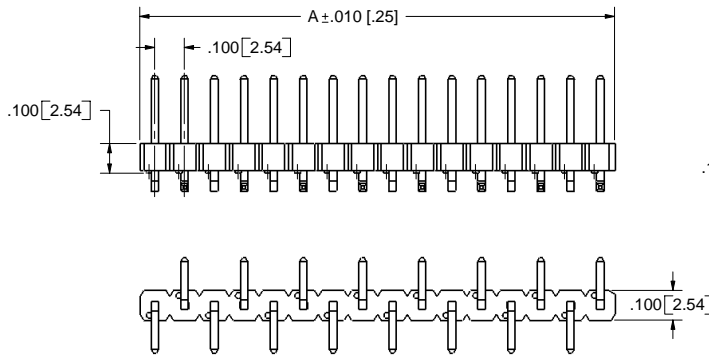
**PLATING**

ALL PLATINGS HAVE .000050" NICKEL UNDERPLATE

	CONTACT	TERMINATION
B =	.000010" GOLD	.000100" PURE TIN, MATTE
C =	.000030" GOLD	.000100" PURE TIN, MATTE
E =	.000100" PURE TIN, MATTE OVERALL	



RECOMMENDED PCB LAYOUT



**REVISIONS**

REV.	ECO. NO	DESCRIPTION	DATE	BY
A	62	ORIGINAL RELEASE	9/19/03	JFW
B	451	CORRECTED PIN ORIGINS	11/11/04	JFW
C	474	UPDATED PLATING SPECS, ADD NOTES, ADD P/N BREAKDOWN	12/7/2004	MNH

PART NUMBER	A
G_C01SABN-M30	0.100 [2.54]
G_C02SABN-M30	0.200 [5.08]
G_C03SABN-M30	0.300 [7.62]
G_C04SABN-M30	0.400 [10.16]
G_C05SABN-M30	0.500 [12.70]
G_C06SABN-M30	0.600 [15.24]
G_C07SABN-M30	0.700 [17.78]
G_C08SABN-M30	0.800 [20.32]
G_C09SABN-M30	0.900 [22.86]
G_C10SABN-M30	1.000 [25.40]
G_C11SABN-M30	1.100 [27.94]
G_C12SABN-M30	1.200 [30.48]
G_C13SABN-M30	1.300 [33.02]
G_C14SABN-M30	1.400 [35.56]
G_C15SABN-M30	1.500 [38.10]
G_C16SABN-M30	1.600 [40.64]
G_C17SABN-M30	1.700 [43.18]
G_C18SABN-M30	1.800 [45.72]
G_C19SABN-M30	1.900 [48.26]
G_C20SABN-M30	2.000 [50.80]
G_C21SABN-M30	2.100 [53.34]
G_C22SABN-M30	2.200 [55.88]
G_C23SABN-M30	2.300 [58.42]
G_C24SABN-M30	2.400 [60.96]
G_C25SABN-M30	2.500 [63.50]
G_C26SABN-M30	2.600 [66.04]
G_C27SABN-M30	2.700 [68.58]
G_C28SABN-M30	2.800 [71.12]
G_C29SABN-M30	2.900 [73.66]
G_C30SABN-M30	3.000 [76.20]
G_C31SABN-M30	3.100 [78.74]
G_C32SABN-M30	3.200 [81.28]
G_C33SABN-M30	3.300 [83.82]
G_C34SABN-M30	3.400 [86.36]
G_C35SABN-M30	3.500 [88.90]
G_C36SABN-M30	3.600 [91.44]

**NOTES:**

- INSULATOR MATERIAL: PA9T.
- CONTACT MATERIAL: PHOSPHOR BRONZE
- PLATING: SEE TABLE
- OPERATING TEMPERATURE: -65°C TO +125°C
- PROCESSING TEMPERATURE: 260°C MAX FOR 120 SECS MAX.
- UL FLAMMABILITY: 94V-0
- VOLTAGE RATING: 600 VDC MINIMUM AT SEA LEVEL.
- CURRENT RATING: 3 AMP
- INSULATION RESISTANCE: 5000 MEGA OHMS.
- MODIFICATION: SURFACE MOUNT.

**CUSTOMER COPY**

UNLESS OTHERWISE SPECIFIED: DIMENSIONS ARE IN INCHES(MM)		DATE	NAME
TOLERANCES: ANGULAR: ± 1° XX = ± .02 [508] XXX = ± .005 [127] XXXX = ± .0005 [0127] PARENTHEICAL INFORMATION IS FOR REFERENCE ONLY			Arfa
THE INFORMATION HEREIN CONTAINS PROPRIETARY RIGHTS OF BULLINS ELECTRONICS AND IS NOT TO BE REPRODUCED, USED OR DISCLOSED TO OTHERS FOR ANY PURPOSE EXCEPT AS SPECIFICALLY AUTHORIZED IN WRITING BY BULLINS ELECTRONICS.		DESCRIPTION HEADER, .100 CC	
INTERPRET DIMENSIONS AND GEOMETRIC TOLERANCING PER: ANSI Y14.5-1984		PART NUMBER G_C_C_SABN-M30	
SIZE C		DWG. NO. C10058	REV C
SCALE: 4:1		SHEET 1 OF 1	