

PART NUMBER CODING

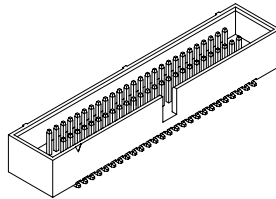
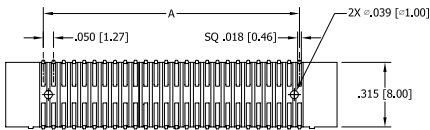
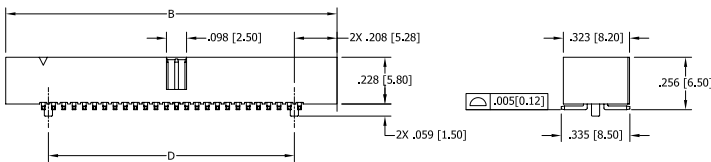
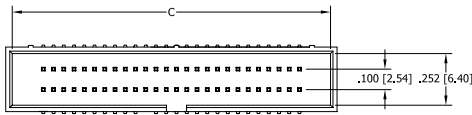
SBH41 - NBPB - D - - - SP - - -

NUMBER OF POSITIONS
(CONTACTS PER ROW)

TERMINATION
SURFACE MOUNT W/ PEGS

COLOR

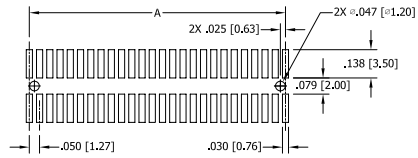
- BK = BLACK
- YE = YELLOW
- RE = RED
- BL = BLUE
- GR = GREEN
- GY = GREY
- WH = WHITE
- OR = ORANGE



NOTES:

1. INSULATOR MATERIAL: NYLON 6T.
2. CONTACT MATERIAL: BRASS.
3. PLATING: GOLD FLASH OVERALL.
4. OPERATING TEMPERATURE: -40°C ~ 85°C.
5. PROCESSING TEMP: 230°C FOR 60 SECONDS MAX. (260°C, 10 SEC.)
6. UL FLAMMABILITY RATING: 94V-0.
7. VOLTAGE RATING: 20m OHMS MAX.
8. CURRENT RATING: 1 AMP PER CONTACT.
9. VOLTAGE DROP: AC 500 V.
10. INSULATION RESISTANCE: 1000 MEGA OHMS.

REVISIONS				
REV.	ECO. NO	DESCRIPTION	DATE	BY
A	1682	INITIAL RELEASE	6/4/2008	VJ
B	1852	UPDATE NOTE 3 & TOLERANCE BLOCK	11/17/2008	JH



RECOMMENDED PCB LAYOUT

PART NUMBER	POSITIONS/ CONTACTS	A		B		C		D	
		INCH	MM	INCH	MM	INCH	MM	INCH	MM
SBH41-NBPB-D05-SP	5/10	0.200	5.08	0.566	14.38	0.503	12.78	0.123	3.12
SBH41-NBPB-D06-SP	6/12	0.250	6.35	0.616	15.65	0.553	14.05	0.173	4.39
SBH41-NBPB-D07-SP	7/14	0.300	7.62	0.666	16.92	0.603	15.32	0.223	5.66
SBH41-NBPB-D08-SP	8/16	0.350	8.89	0.716	18.19	0.653	16.59	0.273	6.93
SBH41-NBPB-D09-SP	9/18	0.400	10.16	0.766	19.46	0.703	17.86	0.323	8.20
SBH41-NBPB-D10-SP	10/20	0.450	11.43	0.816	20.73	0.753	19.13	0.373	9.47
SBH41-NBPB-D11-SP	11/22	0.500	12.70	0.866	22.00	0.803	20.40	0.423	10.74
SBH41-NBPB-D12-SP	12/24	0.550	13.97	0.916	23.27	0.853	21.67	0.473	12.01
SBH41-NBPB-D13-SP	13/26	0.600	15.24	0.966	24.54	0.903	22.94	0.523	13.28
SBH41-NBPB-D14-SP	14/28	0.650	16.51	1.016	25.81	0.953	24.21	0.573	14.55
SBH41-NBPB-D15-SP	15/30	0.700	17.78	1.066	27.08	1.003	25.48	0.623	15.82
SBH41-NBPB-D16-SP	16/32	0.750	19.05	1.116	28.35	1.053	26.75	0.673	17.09
SBH41-NBPB-D17-SP	17/34	0.800	20.32	1.166	29.62	1.103	28.02	0.723	18.36
SBH41-NBPB-D18-SP	18/36	0.850	21.59	1.216	30.89	1.153	29.29	0.773	19.63
SBH41-NBPB-D19-SP	19/38	0.900	22.86	1.266	32.16	1.203	30.56	0.823	20.90
SBH41-NBPB-D20-SP	20/40	0.950	24.13	1.316	33.43	1.253	31.83	0.873	22.17
SBH41-NBPB-D21-SP	21/42	1.000	25.40	1.366	34.70	1.303	33.10	0.923	23.44
SBH41-NBPB-D22-SP	22/44	1.050	26.67	1.416	35.97	1.353	34.37	0.973	24.71
SBH41-NBPB-D23-SP	23/46	1.100	27.94	1.466	37.24	1.403	35.64	1.023	25.98
SBH41-NBPB-D24-SP	24/48	1.150	29.21	1.516	38.51	1.453	36.91	1.073	27.25
SBH41-NBPB-D25-SP	25/50	1.200	30.48	1.566	39.78	1.503	38.18	1.123	28.52
SBH41-NBPB-D26-SP	26/52	1.250	31.75	1.616	41.05	1.553	39.45	1.173	29.79
SBH41-NBPB-D27-SP	27/54	1.300	33.02	1.666	42.32	1.603	40.72	1.223	31.06
SBH41-NBPB-D28-SP	28/56	1.350	34.29	1.716	43.59	1.653	41.99	1.273	32.33
SBH41-NBPB-D29-SP	29/58	1.400	35.56	1.766	44.86	1.703	43.26	1.323	33.60
SBH41-NBPB-D30-SP	30/60	1.450	36.83	1.816	46.13	1.753	44.53	1.373	34.87
SBH41-NBPB-D41-SP	31/62	1.500	38.10	1.866	47.40	1.803	45.80	1.423	36.14
SBH41-NBPB-D32-SP	32/64	1.550	39.37	1.916	48.67	1.853	47.07	1.473	37.41
SBH41-NBPB-D33-SP	33/66	1.600	40.64	1.966	49.94	1.903	48.34	1.523	38.68
SBH41-NBPB-D34-SP	34/68	1.650	41.91	2.016	51.21	1.953	49.61	1.573	39.95
SBH41-NBPB-D35-SP	35/70	1.700	43.18	2.066	52.48	2.003	50.88	1.623	41.22
SBH41-NBPB-D36-SP	36/72	1.750	44.45	2.116	53.75	2.053	52.15	1.673	42.49
SBH41-NBPB-D37-SP	37/74	1.800	45.72	2.166	55.02	2.103	53.42	1.723	43.76
SBH41-NBPB-D38-SP	38/76	1.850	46.99	2.216	56.29	2.153	54.69	1.773	45.03
SBH41-NBPB-D39-SP	39/78	1.900	48.26	2.266	57.56	2.203	55.96	1.823	46.30
SBH41-NBPB-D40-SP	40/80	1.950	49.53	2.316	58.83	2.253	57.23	1.873	47.57

UNLESS OTHERWISE SPECIFIED:
DIMENSIONS ARE IN INCHES(MM)

TOLERANCES:
ANGULAR: ± 1°
XX# = ±.012 (0.30)
XXX# = ±.008 (0.20)
XXXX# = ±.004 (0.10)
PARENTHESES () = INFORMATION IS FOR REFERENCE ONLY

INTERPRET DIMENSIONS AND GEOMETRIC TOLERANCING PERZ ANSI Y14.5-1984

DATE: 6/4/2008
DRAWN: V. JARA

SULLINS
CONNECTOR SOLUTIONS

DESCRIPTION: 2 COMPONENTS BOX HEADERS CONT'D SURFACE MOUNT WITH PEGS SBH41-NBPB-D - - SP - -
PART NUMBER: SBH41-NBPB-D - - SP - -
SIZE: C
DWGS. NO.: 11107
SCALE: NONE

REV B
SHEET 1 OF 1

RoHS COMPLIANT