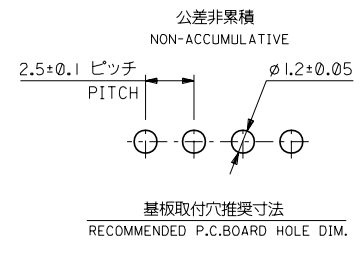
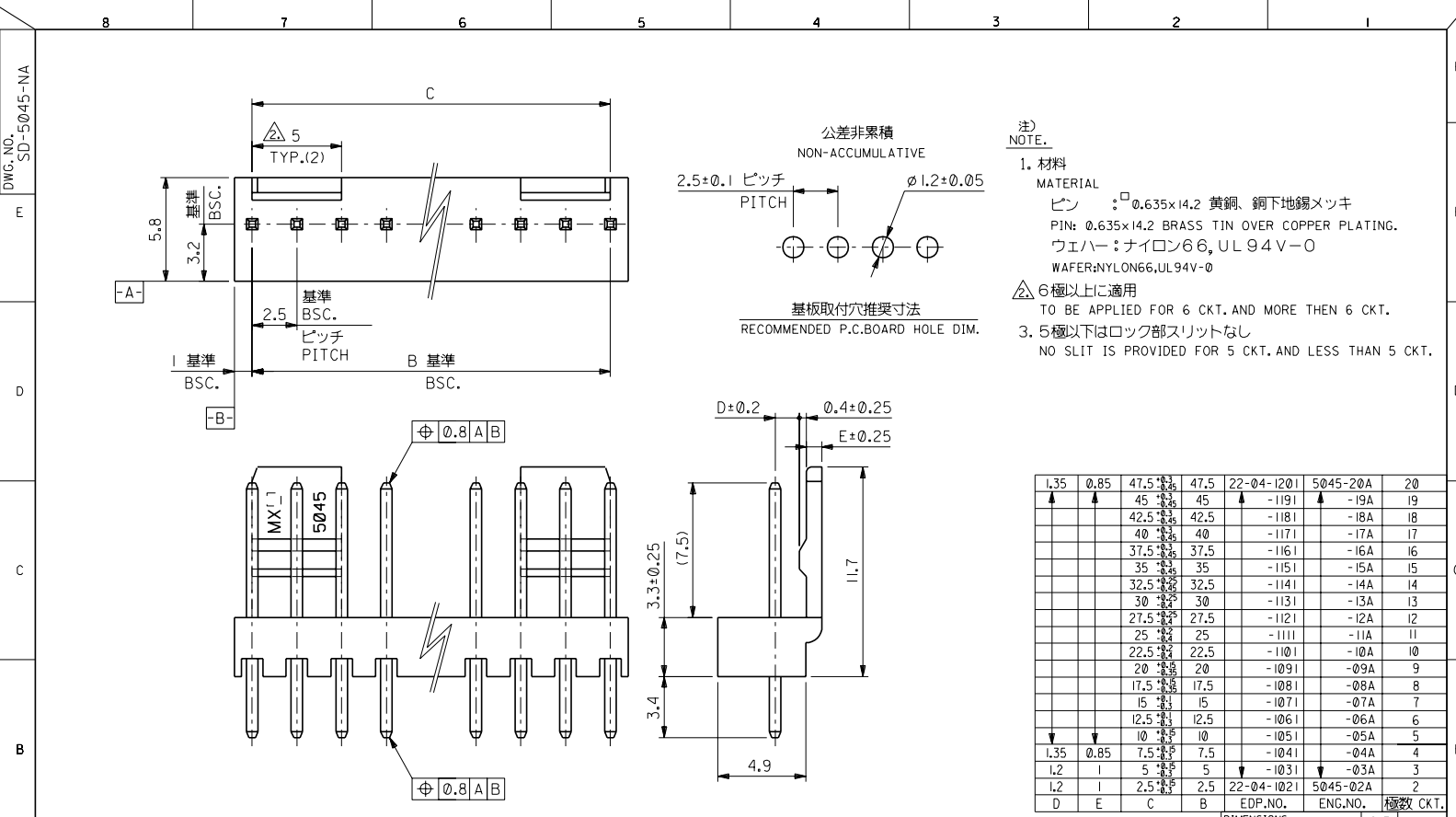


DWG. NO. SD-5045-NA



注) NOTE.
 1. 材料 MATERIAL
 PIN: 0.635x14.2 黄銅、銅下地錫メッキ
 ウェハー: ナイロン66, UL94V-0
 WAFER: NYLON66, UL94V-0
 △ 6極以上に適用 TO BE APPLIED FOR 6 CKT. AND MORE THEN 6 CKT.
 3. 5極以下はロック部スリットなし NO SLIT IS PROVIDED FOR 5 CKT. AND LESS THAN 5 CKT.

1.35	0.85	47.5	47.5	22-04-1201	5045-20A	20
		45	45	-1191	-19A	19
		42.5	42.5	-1181	-18A	18
		40	40	-1171	-17A	17
		37.5	37.5	-1161	-16A	16
		35	35	-1151	-15A	15
		32.5	32.5	-1141	-14A	14
		30	30	-1131	-13A	13
		27.5	27.5	-1121	-12A	12
		25	25	-1111	-11A	11
		22.5	22.5	-1101	-10A	10
		20	20	-1091	-09A	9
		17.5	17.5	-1081	-08A	8
		15	15	-1071	-07A	7
		12.5	12.5	-1061	-06A	6
		10	10	-1051	-05A	5
1.35	0.85	7.5	7.5	-1041	-04A	4
1.2	1	5	5	-1031	-03A	3
1.2	1	2.5	2.5	22-04-1021	5045-02A	2
D	E	C	B	EDP. NO.	ENG. NO.	極数 CKT.

DO NOT SCALE DRAWING		REDRAWN		MATERIAL 注記参照 SEE NOTES		GENERAL TOLERANCES: (UNLESS SPECIFIED) 一般公差		SCALE 5:1		DESIGN UNITS 7800 PROJECTION		DIMENSIONS: 7800 PROJECTION		SHT REV		
8	7	6	5	4	3	2	1	10 UNDER 未満	±0.4	DRAWN BY & DATE K.KOHAMA 00/3/28	7800	mm	mm	mm	mm	REVISE ON CAD ONLY
								10 OVER 以上 30 UNDER 未満	±0.4	CHECKED BY & DATE T.YAMAGUCHI 00/3/30	ANGLE	角度	°	TITLE: KK 2.5 WAFER ASS'Y WITH LOCK		
								30 OVER 以上	±0.4	APPROVED BY & DATE M.FUKUSHIMA 00/3/30	7800	mm	mm	MOLEX INCORPORATED		
								FINISH 仕上げ	—	CAD FILENAME S5045.S01	MATERIAL NO. 5045-***A	DRAWING NO. SD-5045-NA	SHEET NO. 1	INCORPORATED AND SHOULD NOT BE USED WITHOUT WRITTEN PERMISSION.		
								WIRE RANGE 適用電線範囲	—					EN-02(J097) MXJ-54		
								INS. RANGE 被覆外径	—					SIZE B		