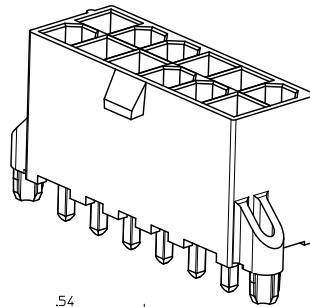
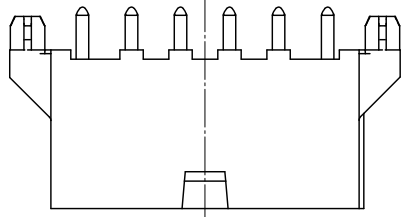
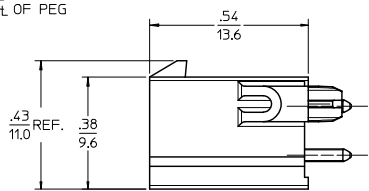
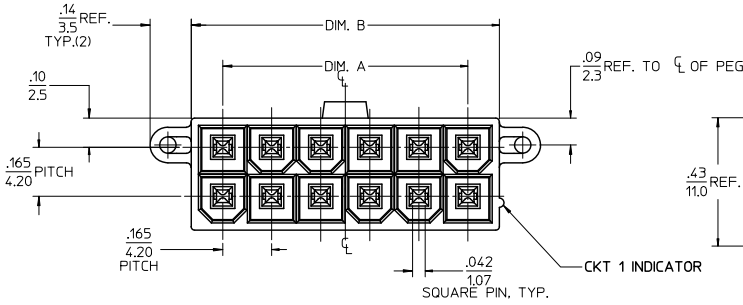


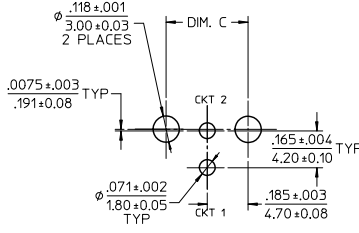
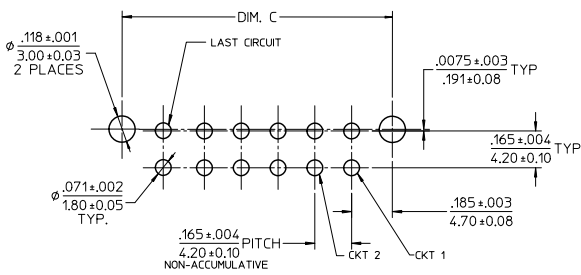
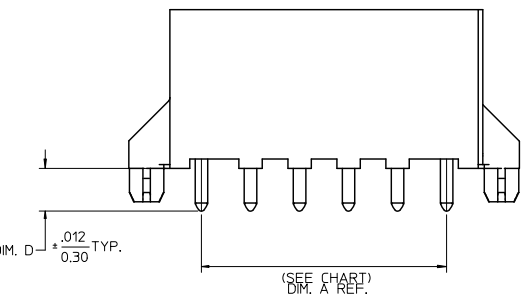
13 12 11 10 9 8 7 6 5 4 3 2 1



CIRCUIT SIZE	DIM. A	DIM. B	DIM. C
02	NA	0.21/5.4	0.37/9.4
04	0.165/4.20	0.38/9.6	0.535/13.60
06	0.331/8.40	0.54/13.8	0.701/17.80
08	0.496/12.60	0.71/18.0	0.866/22.00
10	0.661/16.80	0.87/22.2	1.031/26.20
12	0.827/21.00	1.04/26.4	1.197/30.40
14	0.992/25.20	1.21/30.6	1.362/34.60
16	1.160/29.40	1.37/34.8	1.528/38.80
18	1.323/33.60	1.54/39.0	1.693/43.00
20	1.488/37.80	1.70/43.2	1.858/47.20
22	1.654/42.00	1.87/47.4	2.024/51.40
24	1.819/46.20	2.03/51.6	2.189/55.60



ISOMETRIC VIEW (12 CKT - SHOWN)



LAYOUT FOR 4-24 CIRCUIT

LAYOUT FOR 2 CIRCUIT

RECOMMENDED PCB HOLE LAYOUT COMPONENT SIDE (SCALE 3:1)

- NOTES:
1. MATERIALS:  
HOUSING - LIQUID CRYSTAL POLYMER (LCP), COLOR: BLACK  
TERMINAL - BRASS ALLOY C26000
  2. TERMINAL PLATING:  
TIN= .000100/0.00254 MIN MATTE TIN OVER  
.000050/0.00127 MIN NICKEL OVERALL  
GOLD= .000030/0.00076 MIN. SELECT GOLD OVER  
.000100/0.00254 MIN. SELECT MATTE TIN OVER  
.000050/0.00127 MIN NICKEL OVERALL
  3. PRODUCT SPECIFICATION: PS-46207-001
  4. PACKAGING SPECIFICATION: TRAY PACK PER PK-46207-001  
TAPE AND REEL PACK PER PK-46207-002
  5. PART CONFORMS TO CLASS "B" REQUIREMENTS OF COSMETIC SPECIFICATION PS-45499-002.

QUALITY SYMBOLS ▽=0 ▽=0 ▽=0	GENERAL TOLERANCES (UNLESS SPECIFIED)		DIMENSION STYLE IN/MM		SCALE 4:1	DESIGN UNITS METRIC	THIRD ANGLE PROJECTION
	mm		INCH		DRAWN BY DROSCA	DATE 08/07/2006	TITLE
	4 PLACES ±.005		±.005		CHECKED BY BWIRKUS	DATE 08/07/2006	MINI-FIT RTC HI-TEMP VERTICAL HEADER IN LCP, W/PCB PEGS
	3 PLACES ±.013		±.010		APPROVED BY BWIRKUS	DATE 08/07/2006	MOLEX INCORPORATED
2 PLACES ±.025		±.025		MATERIAL NO. SEE TABLE		DOCUMENT NO. SD-46207-001	SHEET NO. 1 OF 2
1 PLACE ±.025		±.025		DRAFT WHERE APPLICABLE MUST REMAIN WITHIN DIMENSIONS		THIS DRAWING CONTAINS INFORMATION THAT IS PROPRIETARY TO MOLEX INCORPORATED AND SHOULD NOT BE USED WITHOUT WRITTEN PERMISSION	

GOLD PLATING					TIN PLATING				
CIRCUIT SIZE	TAPE & REEL MATERIAL NUMBER	TRAY PACKED MATERIAL NUMBER	DIM. D	PCB THICKNESS	CIRCUIT SIZE	TAPE & REEL MATERIAL NUMBER	TRAY PACKED MATERIAL NUMBER	DIM. D	PCB THICKNESS
02	462077002	* 462075002	* 0.144/3.66	0.062	02	462073002	* 462070002	* 0.144/3.66	0.062
04	462077004	* 462075004	* 0.144/3.66	0.062	04	462073004	* 462070004	* 0.144/3.66	0.062
06	462077006	* 462075006	* 0.144/3.66	0.062	06	462073006	* 462070006	* 0.144/3.66	0.062
08	462077008	* 462075008	* 0.144/3.66	0.062	08	462073008	* 462070008	* 0.144/3.66	0.062
10	462077010	* 462075010	* 0.144/3.66	0.062	10	462073010	* 462070010	* 0.144/3.66	0.062
12	462077012	* 462075012	* 0.144/3.66	0.062	12	462073012	* 462070012	* 0.144/3.66	0.062
14	462077014	* 462075014	* 0.144/3.66	0.062	14	462073014	* 462070014	* 0.144/3.66	0.062
16	462077016	* 462075016	* 0.144/3.66	0.062	16	462073016	* 462070016	* 0.144/3.66	0.062
18	462077018	* 462075018	* 0.144/3.66	0.062	18	462073018	* 462070018	* 0.144/3.66	0.062
20	462077020	* 462075020	* 0.144/3.66	0.062	20	462073020	* 462070020	* 0.144/3.66	0.062
22	462077022	* 462075022	* 0.144/3.66	0.062	22	462073022	* 462070022	* 0.144/3.66	0.062
24	462077024	* 462075024	* 0.144/3.66	0.062	24	462073024	* 462070024	* 0.144/3.66	0.062
02					02		462070102	* 0.176/4.46	0.093
04					04		462070104	* 0.176/4.46	0.093
06					06		462070106	* 0.176/4.46	0.093
08					08		462070108	* 0.176/4.46	0.093
10					10		462070110	* 0.176/4.46	0.093
12					12		462070112	* 0.176/4.46	0.093
14					14		462070114	* 0.176/4.46	0.093
16					16		462070116	* 0.176/4.46	0.093
18					18		462070118	* 0.176/4.46	0.093
20					20		462070120	* 0.176/4.46	0.093
22					22		462070122	* 0.176/4.46	0.093
24					24		462070124	* 0.176/4.46	0.093
02					02		462070202	* 0.207/5.26	0.125
04					04		462070204	* 0.207/5.26	0.125
06					06		462070206	* 0.207/5.26	0.125
08					08		462070208	* 0.207/5.26	0.125
10					10		462070210	* 0.207/5.26	0.125
12					12		462070212	* 0.207/5.26	0.125
14					14		462070214	* 0.207/5.26	0.125
16					16		462070216	* 0.207/5.26	0.125
18					18		462070218	* 0.207/5.26	0.125
20					20		462070220	* 0.207/5.26	0.125
22					22		462070222	* 0.207/5.26	0.125
24					24		462070224	* 0.207/5.26	0.125

\* DESIGNATES PART NOT RELEASED CONTACT FACTORY FOR AVAILABILITY.

\* DESIGNATES PART NOT RELEASED CONTACT FACTORY FOR AVAILABILITY.

SEE SHEET 1 EC NO. UEP2010-1779 DRW: JAGUILAR 20/08/2006 CHK: BELL 20/08/22 APPR: SMITH 20/08/22	QUALITY SYMBOLS 	GENERAL TOLERANCES (UNLESS SPECIFIED)		DIMENSION STYLE		SCALE	DESIGN UNITS	THIRD ANGLE PROJECTION 		
				IN/MM		1:1	METRIC			
		DRAWN BY		DATE	TITLE		MATERIAL NO.		DOCUMENT NO.	
		DRAFT WHERE APPLICABLE MUST REMAIN WITHIN DIMENSIONS		08/07/2006	MINI-FIT RTC HI-TEMP VERTICAL HEADER IN LCP, W/PCB PEGS		SD-46207-001		SHEET NO. 2 OF 2	
		CHECKED BY		DATE	APPROVED BY		DATE	MOLEX INCORPORATED THIS DRAWING CONTAINS INFORMATION THAT IS PROPRIETARY TO MOLEX INCORPORATED AND SHOULD NOT BE USED WITHOUT WRITTEN PERMISSION		
		08/07/2006		08/07/2006		08/07/2006				