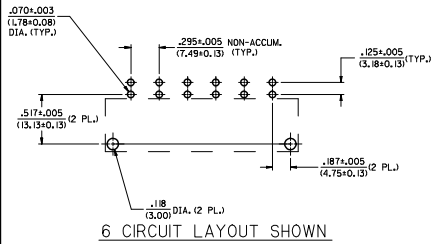


SEE SHEET 5 AND 6 FOR ITEM NUMBER CHART

**RECOMMENDED P.C. BOARD LAYOUT FOR RIGHT ANGLE HEADERS**

SCALE 2:1



6 CIRCUIT LAYOUT SHOWN

**NOTES:**

- INSULATOR MATERIAL (SEE CHART)  
A = 30% GLASS-FILLED 46 NYLON, 94V-0, COLOR: BLACK  
TERMINAL MATERIAL: C26000 BRASS
- TERMINAL FINISH: 35 MICRON (0.88 MICROMETER) MINIMUM TIN OVER  
20 MICRON (0.50 MICROMETER) MINIMUM COPPER.  
\* THE PRIMARY SHIPPING CARTON WILL BE LABELED  
"COMPLIANT TO RoHS DIRECTIVE 2002/95/EC  
AND ELY ANNEX II OF DIRECTIVE 2000/53/EC."  
CARTONS WITHOUT THIS LABEL MAY CONTAIN  
PRODUCT WITH TIN-LEAD IN THE PC TAILS.
- PRODUCT SPECIFICATION: PSX-44441-9999.
- PACKAGING: SEE CHART.
- THESE HEADERS MATE WITH 43179, 43335, OR 44441 RECEPTACLE HOUSINGS.
- SEE SHEETS 1, 2 AND 3 FOR VERTICAL HEADER ASSEMBLIES AND THEIR RESPECTIVE PART NUMBERS.
- SEE SHEETS 4, 5 AND 6 FOR RIGHT ANGLE HEADER ASSEMBLIES AND THEIR RESPECTIVE PART NUMBERS.
- DIMENSIONS ARE FOR REFERENCE ONLY UNLESS INDICATED OTHERWISE.

SOLDER TAIL DIM. 'A' ±0.01(0.28)	BOARD LOCK DIM. 'B' ±0.04(1.01)
SHORT .150(3.81)	.062 .070(1.78)
LONG .210(5.33)	.094 .102(2.59)
	.125 .133(3.38)

SOLDER TAIL DIM. 'A' ±0.01(0.28)	BOARD LOCK DIM. 'B' ±0.04(1.01)
SHORT .150(3.81)	.062 .070(1.78)
LONG .210(5.33)	.094 .102(2.59)
	.125 .133(3.38)

REMOVE DIM. DIMS FROM DRAWING SYSTEMS (E2000/0105) CHYDIAELAG 2000/0105 APPROV. SITH 2000/0105 REV. DESCRIPTION	QUALITY SYMBOLS	GENERAL TOLERANCES (UNLESS SPECIFIED)	DIMENSION STYLE	SCALE	DESIGN UNITS	THIRD ANGLE PROJECTION	
	4 PLACES ±--- ±--- 3 PLACES ±--- ±.005 2 PLACES ±0.13 ±.01 1 PLACE ±0.25 ±--- ANGULAR ±1/2°	IN/MM INCH	DRAWN BY DATE DC 11/30/95 CHECKED BY DATE KBP 11/30/95 APPROVED BY DATE RAS 11/30/95	IN/MM	3:1	INCH	TITLE SABRE HEADER ASSY RT. ANGLE, 2-6 & 8 CIR. .125/(3.18)X.020/(0.51)
	DRAFT WHERE APPLICABLE MUST REMAIN WITHIN DIMENSIONS	SEE CHART	MATERIAL NO.	DOCUMENT NO.	SHEET NO.		
				SDA-43160-XXXX	4 OF 6		

RT. ANGLE HEADER ASSEMBLY ITEM NO.	PART CHARACTERISTICS FOR RIGHT ANGLE HEADER				PACKAGING SPECIFICATIONS
	CIRCUIT SIZE	HSG. MAT'L (SEE NOTE II)	SOLDER TAIL	BOARD LOCK	
43160-1102	2	A	SHORT	N/A	PK-43160-0010
43160-1302	2	A	LONG	N/A	PK-43789-001
43160-3102	2	A	SHORT	.062	PK-43789-001
43160-5102	2	A	SHORT	.094	PK-43789-001
43160-5302	2	A	LONG	.094	PK-43789-001
43160-7302	2	A	LONG	.125	PK-43789-001
43160-1103	3	A	SHORT	N/A	PK-43160-0010
43160-1303	3	A	LONG	N/A	PK-43789-001
43160-3103	3	A	SHORT	.062	PK-43789-001
43160-5103	3	A	SHORT	.094	PK-43789-001
43160-5303	3	A	LONG	.094	PK-43789-001
43160-7303	3	A	LONG	.125	PK-43789-001

RT. ANGLE HEADER ASSEMBLY ITEM NO.	PART CHARACTERISTICS FOR RIGHT ANGLE HEADER				PACKAGING SPECIFICATIONS
	CIRCUIT SIZE	HSG. MAT'L (SEE NOTE II)	SOLDER TAIL	BOARD LOCK	
43160-1104	4	A	SHORT	N/A	PK-43160-0010
43160-1304	4	A	LONG	N/A	PK-43789-001
43160-3104	4	A	SHORT	.062	PK-43789-001
43160-5104	4	A	SHORT	.094	PK-43789-001
43160-5304	4	A	LONG	.094	PK-43789-001
43160-7304	4	A	LONG	.125	PK-43789-001
43160-1105	5	A	SHORT	N/A	PK-43160-0010
43160-1305	5	A	LONG	N/A	PK-43789-001
43160-3105	5	A	SHORT	.062	PK-43789-001
43160-5105	5	A	SHORT	.094	PK-43789-001
43160-5305	5	A	LONG	.094	PK-43789-001
43160-7305	5	A	LONG	.125	PK-43789-001

RT. ANGLE HEADER ASSEMBLY ITEM NO.	PART CHARACTERISTICS FOR RIGHT ANGLE HEADER				PACKAGING SPECIFICATIONS
	CIRCUIT SIZE	HSG. MAT'L (SEE NOTE II)	SOLDER TAIL	BOARD LOCK	
43160-1106	6	A	SHORT	N/A	PK-43160-0010
43160-1306	6	A	LONG	N/A	PK-43789-001
43160-3106	6	A	SHORT	.062	PK-43789-001
43160-5106	6	A	SHORT	.094	PK-43789-001
43160-5306	6	A	LONG	.094	PK-43789-001
43160-7306	6	A	LONG	.125	PK-43789-001

REMOVE DIM. DIM. PINS SEE MOLEX DRAWING 2000/0105 DRAWING NUMBER 2000/0105 CHECKED BY CHIKOJALING APPROVED BY CHIKOJALING	QUALITY SYMBOLS	GENERAL TOLERANCES (UNLESS SPECIFIED)	DIMENSION STYLE	SCALE	DESIGN UNITS	THIRD ANGLE PROJECTION	
	▽=0 ▽=0	4 PLACES ±.005 ±.005 3 PLACES ±.010 ±.010 2 PLACES ±.015 ±.015 1 PLACE ±.025 ±.025 ANGULAR ±1/2°	IN/MM INCH	DRAWN BY DATE 11/30/95	1:1 INCH	INCH	THIRD ANGLE PROJECTION
				CHECKED BY DATE KBP 11/30/95			TITLE SABRE HEADER ASSY RT. ANGLE, 2-6 & 8 CIR. .125/(3.18)X.020/(0.51)
				APPROVED BY DATE RAS 11/30/95			MOLEX INCORPORATED
		DRAFT WHERE APPLICABLE MUST REMAIN WITHIN DIMENSIONS	MATERIAL NO. SEE CHART	DOCUMENT NO. SDA-43160-XXXX		SHEET NO. 5 OF 6	
			THIS DRAWING CONTAINS INFORMATION THAT IS PROPRIETARY TO MOLEX INCORPORATED AND SHOULD NOT BE USED WITHOUT WRITTEN PERMISSION				