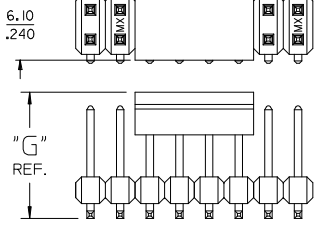
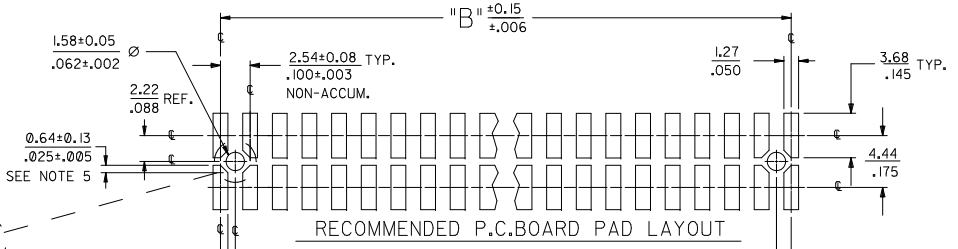


13 12 11 10 9 8 7 6 5 4 3 2 1

OPTIONAL PICK AND PLACE CAP
SEE NOTES 4 & 9.



DIM. "M"	DIM. "G"
6.10 .240	10.67 .420
8.13 .320	12.70 .500

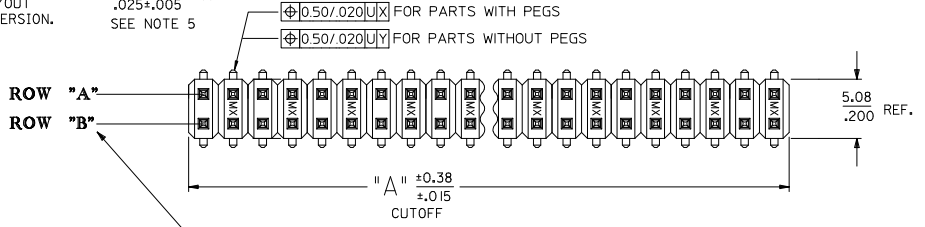
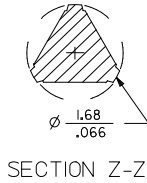
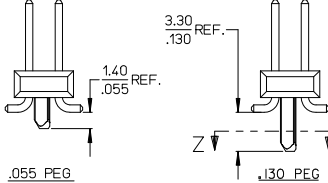


RECOMMENDED P.C. BOARD PAD LAYOUT

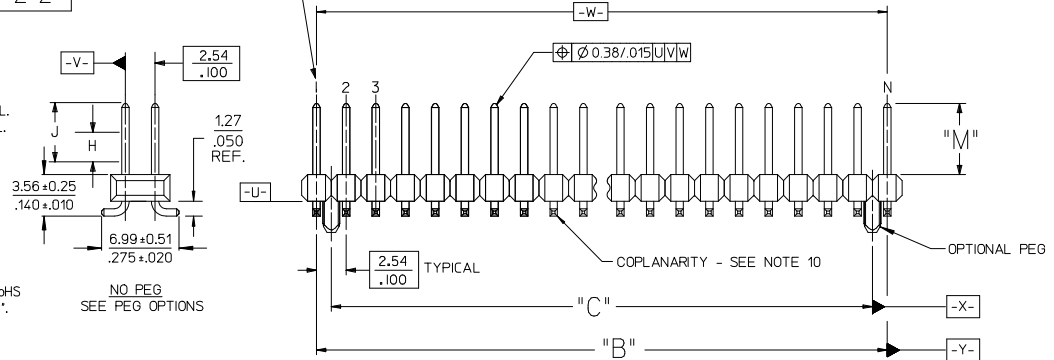
P.C. BOARD PAD LAYOUT AT ENDS FOR NO PEG VERSION.



PEG OPTIONS



USED TO LOCATE VOIDED CIRCUITS



- NOTES:
- MATERIALS: INSULATOR: GLASS FILLED LIQUID CRYSTAL POLYMER (LCP), UL94 V-0, COLOR: BLACK
TERMINAL: COPPER ALLOY
 - FINISH:
59 TIN - 0.00150/0.00059 MINIMUM BRIGHT TIN OVER NICKEL OVERALL.
150 TIN - 0.00381/0.00150 MINIMUM BRIGHT TIN OVER NICKEL OVERALL.
15 GOLD - 0.00038/0.00015 MINIMUM GOLD IN SELECT AREA OVER 0.00191/0.00075 MINIMUM TIN IN SELECT AREA OVER NICKEL OVERALL.
30 GOLD - 0.00076/0.00030 MINIMUM GOLD IN SELECT AREA OVER 0.00191/0.00075 MINIMUM TIN IN SELECT AREA OVER NICKEL OVERALL.
50 GOLD - 0.00127/0.00050 MINIMUM GOLD IN SELECT AREA OVER 0.00254/0.00100 MINIMUM TIN IN SELECT AREA OVER NICKEL OVERALL.
* THE PRIMARY SHIPPING CARTON WILL BE LABELED "COMPLIANT TO ROHS DIRECTIVE 2002/95/EC AND ELV ANNEX II OF DIRECTIVE 2000/53/EC". CARTONS WITHOUT THIS LABEL MAY CONTAIN PRODUCT WITH LEAD.
 - PART TO CONFORM TO PS-71308.
 - PACKAGING (SEE CHARTS):
BULK: PER PK-70873-0353
TUBES: PER PK-70873-0041
71308-82** IN TUBES: PER PK-70873-042.
TUBES W/ VAC CAPS: PER PK-70873-0691
TAPE AND REEL W/ VAC CAPS: PER PK-70873-0805.
SEE SHEET 3 FOR TAPE & REEL PRODUCT WITH SHALLOW POCKET REQUIREMENTS.
 - TYP. DIMENSIONS FOR LANDS SURROUNDING HOLES FOR RETENTION PEGS.
 - PIN SOLERABILITY PER MOLEX SPEC, ES-152.
 - SEE SHEETS 2-5 FOR CHARTED DIMS., PART/EDP NO'S, AND VOIDED CIRCUITS.
 - PIN PUSHOUT FORCE: 3 LBS. MINIMUM.
 - PICK-N-PLACE CAPS WILL BE PLACED SO THAT VACUUM PICK UP AREA WILL BE IN CENTER OF PART.
 - COPLANARITY FOR CIRCUIT SIZES UP TO 40 IS 0.15 MM/0.006 INCH. FOR CIRCUIT SIZES 42 AND LARGER, CONTACT MOLEX SALES DEPARTMENT.
 - THIS PART CONFORMS TO CLASS B REQUIREMENTS OF COSMETIC SPECIFICATION PS-45499-002.

ADD PEG DIMENSIONS EC NO: UCP2011-1028 DRAWN BY: JPPER CHKD: JBEL APPR: FSMITH REV: K4	QUALITY SYMBOLS ▽=0 ▽=0	GENERAL TOLERANCES (UNLESS SPECIFIED)		DIMENSION STYLE		SCALE	DESIGN UNITS	THIRD ANGLE PROJECTION	
		mm	INCH	MM/IN	MM/IN	INCH	INCH	INCH	
		4 PLACES	±.005	±.005	KMS	DATE	1999/10/15	TITLE	
		3 PLACES	±.010	±.010	KMS	DATE	1999/10/15	SALES ASSY INSULATOR	
		2 PLACES	±.025	±.025	KMS	DATE	1999/10/15	DUAL ROW SMT W/BREAK-OFF	
		1 PLACE	±.050	±.050	KMS	DATE	1999/10/15	.025SQ PIN GULLWING .100	
		ANGULAR ±1/2°		KMS		DATE	1999/10/15	MOLEX INCORPORATED	
		DRAFT WHERE APPLICABLE MUST REMAIN WITHIN DIMENSIONS		MATERIAL NO.		DOCUMENT NO.		SHEET NO.	
				SEE TABLES		SD-71308-001		1 OF 6	
		THIS DRAWING CONTAINS INFORMATION THAT IS PROPRIETARY TO MOLEX INCORPORATED AND SHOULD NOT BE USED WITHOUT WRITTEN PERMISSION							

12 11 10 9 8 7 6 5 4 3 2 1

		13		12		11		10		9		8		7		6		5		4		3		2		1			
J	CKTS	PACKAGING SEE NOTE 4 SHT 1		4-6 CKT		BULK		TAPE-N-REEL W/ VAC CAPS		N/A		BULK		TAPE-N-REEL W/ VAC CAPS		N/A		BULK		TAPE-N-REEL W/ VAC CAPS		N/A		BULK		BULK			
				8-100 CKT		TUBES		TAPE-N-REEL W/ VAC CAPS		TUBES W/ VAC CAPS		TUBES		TAPE-N-REEL W/ VAC CAPS		TUBES W/ VAC CAPS		TUBES		TAPE-N-REEL W/ VAC CAPS		TUBES W/ VAC CAPS		TUBES		TUBES			
		DIM. M±0.25 MM						6.10 (.240)						6.10 (.240)						6.10 (.240)						8.13 (.320)		8.13 (.320)	
		PLATING						150 TIN						15 GOLD						30 GOLD						15 GOLD		30 GOLD	
		DIM. H						2.54 (.100)						2.54 (.100)						2.54 (.100)						4.57 (.180)		4.57 (.180)	
		DIM. J						5.08 (.200)						5.08 (.200)						5.08 (.200)						7.11 (.280)		7.11 (.280)	
I	MM	IN	DIM. A		DIM. B		EDP NUMBER		EDP NUMBER		EDP NUMBER		EDP NUMBER		EDP NUMBER		EDP NUMBER		EDP NUMBER		EDP NUMBER		EDP NUMBER		EDP NUMBER		CKTS		
			MM	IN	MM	IN	EDP NUMBER	EDP NUMBER	EDP NUMBER	EDP NUMBER	EDP NUMBER	EDP NUMBER	EDP NUMBER	EDP NUMBER	EDP NUMBER	EDP NUMBER	EDP NUMBER	EDP NUMBER	EDP NUMBER	EDP NUMBER	EDP NUMBER	EDP NUMBER	EDP NUMBER	EDP NUMBER	EDP NUMBER				
04	5.08	.200	2.54	.100	015-91-2040	015-91-6040	N/A	015-91-0040	015-91-6042	N/A	015-91-3040	015-91-6043	N/A	015-91-0048	015-91-5049	04													
06	7.62	.300	5.08	.200	015-91-2060	015-91-6060	N/A	015-91-0060	015-91-6062	N/A	015-91-3060	015-91-6063	N/A	015-91-0068	015-91-5069	06													
08	10.16	.400	7.62	.300	015-91-2080	015-91-6080	015-91-3087	015-91-0080	015-91-6082	015-91-3086	015-91-3080	015-91-6083	015-91-3088	015-91-0088	015-91-5089	08													
10	12.70	.500	10.16	.400	015-91-2100	015-91-6100	015-91-3107	015-91-0100	015-91-6102	015-91-3106	015-91-3100	015-91-6103	015-91-3108	015-91-0108	015-91-5109	10													
12	15.24	.600	12.70	.500	015-91-2120	015-91-6120	015-91-3127	015-91-0120	015-91-6122	015-91-3126	015-91-3120	015-91-6123	015-91-3128	015-91-0128	015-91-5129	12													
14	17.78	.700	15.24	.600	015-91-2140	015-91-6140	015-91-3147	015-91-0140	015-91-6142	015-91-3146	015-91-3140	015-91-6143	015-91-3148	015-91-0148	015-91-5149	14													
16	20.32	.800	17.78	.700	015-91-2160	015-91-6160	015-91-3167	015-91-0160	015-91-6162	015-91-3166	015-91-3160	015-91-6163	015-91-3168	015-91-0168	015-91-5169	16													
18	22.86	.900	20.32	.800	015-91-2180					015-91-3186	015-91-3180		015-91-3188	015-91-0188	015-91-5189	18													
20	25.40	1.000	22.86	.900	015-91-2200	015-91-6200	015-91-3207	015-91-0200	015-91-6202	015-91-3206	015-91-3200	015-91-6203	015-91-3208	015-91-0208	015-91-5209	20													
22	27.94	1.100	25.40	1.000	015-91-2220					015-91-3226	015-91-3220		015-91-3228	015-91-0228	015-91-5229	22													
24	30.48	1.200	27.94	1.100	015-91-2240					015-91-3246	015-91-3240		015-91-3248	015-91-0248	015-91-5249	24													
26	33.02	1.300	30.48	1.200	015-91-2260	015-91-6260	015-91-3267	015-91-0260	015-91-6262	015-91-3266	015-91-3260		015-91-3268	015-91-0268	015-91-5269	26													
28	35.56	1.400	33.02	1.300	015-91-2280					015-91-3286	015-91-3280		015-91-3288	015-91-0288	015-91-5289	28													
30	38.10	1.500	35.56	1.400	015-91-2300					015-91-3306	015-91-3300		015-91-3308	015-91-0308	015-91-5309	30													
32	40.64	1.600	38.10	1.500	015-91-2320					015-91-3326	015-91-3320		015-91-3328	015-91-0328	015-91-5329	32													
34	43.18	1.700	40.64	1.600	015-91-2340					015-91-3346	015-91-3340		015-91-3348	015-91-0348	015-91-5349	34													
36	45.72	1.800	43.18	1.700	015-91-2360					015-91-3366	015-91-3360		015-91-3368	015-91-0368	015-91-5369	36													
38	48.26	1.900	45.72	1.800	015-91-2380					015-91-3386	015-91-3380		015-91-3388	015-91-0388	015-91-5389	38													
40	50.80	2.000	48.26	1.900	015-91-2400	015-91-6400	015-91-3407	015-91-0400	015-91-6402	015-91-3406	015-91-3400	015-91-6403	015-91-3408	015-91-0408	015-91-5409	40													
42	53.34	2.100	50.80	2.000	015-91-2420					015-91-3426	015-91-3420		015-91-3428	015-91-0428	015-91-5429	42													
44	55.88	2.200	53.34	2.100	015-91-2440					015-91-3446	015-91-3440		015-91-3448	015-91-0448	015-91-5449	44													
46	58.42	2.300	55.88	2.200	015-91-2460					015-91-3466	015-91-3460		015-91-3468	015-91-0468	015-91-5469	46													
48	60.96	2.400	58.42	2.300	015-91-2480					015-91-3486	015-91-3480		015-91-3488	015-91-0488	015-91-5489	48													
50	63.50	2.500	60.96	2.400	015-91-2500	015-91-6500	015-91-3507	015-91-0500	015-91-6502	015-91-3506	015-91-3500	015-91-6503	015-91-3508	015-91-0508	015-91-5509	50													
52	66.04	2.600	63.50	2.500	015-91-2520					015-91-3526	015-91-3520		015-91-3528	015-91-0528	015-91-5529	52													
54	68.58	2.700	66.04	2.600	015-91-2540					015-91-3546	015-91-3540		015-91-3548	015-91-0548	015-91-5549	54													
56	71.12	2.800	68.58	2.700	015-91-2560					015-91-3566	015-91-3560		015-91-3568	015-91-0568	015-91-5569	56													
58	73.66	2.900	71.12	2.800	015-91-2580					015-91-3586	015-91-3580		015-91-3588	015-91-0588	015-91-5589	58													
60	76.20	3.000	73.66	2.900	015-91-2600					015-91-3606	015-91-3600		015-91-3608	015-91-0608	015-91-5609	60													
62	78.74	3.100	76.20	3.000	015-91-2620					015-91-3626	015-91-3620		015-91-3628	015-91-0628	015-91-5629	62													
64	81.28	3.200	78.74	3.100	015-91-2640					015-91-3646	015-91-3640		015-91-3648	015-91-0648	015-91-5649	64													
66	83.82	3.300	81.28	3.200	015-91-2660					015-91-3666	015-91-3660		015-91-3668	015-91-0668	015-91-5669	66													
68	86.36	3.400	83.82	3.300	015-91-2680					015-91-3686	015-91-3680		015-91-3688	015-91-0688	015-91-5689	68													
70	88.90	3.500	86.36	3.400	015-91-2700					015-91-3706	015-91-3700		015-91-3708	015-91-0708	015-91-5709	70													
72	91.44	3.600	88.90	3.500	015-91-2720					015-91-3726	015-91-3720		015-91-3728	015-91-0728	015-91-5729	72													
74	93.98	3.700	91.44	3.600	015-91-2740					015-91-3746	015-91-3740		015-91-3748	015-91-0748	015-91-5749	74													
76	96.52	3.800	93.98	3.700	015-91-2760					015-91-3766	015-91-3760		015-91-3768	015-91-0768	015-91-5769	76													
78	99.06	3.900	96.52	3.800	015-91-2780					015-91-3786	015-91-3780		015-91-3788	015-91-0788	015-91-5789	78													
80	101.60	4.000	99.06	3.900	015-91-2800					015-91-3806	015-91-3800		015-91-3808	015-91-0808	015-91-5809	80													
82	104.14	4.100	101.60	4.000	71308-0082					71308-0582	71308-0282		71308-0682	71308-1182	71308-1282	82													
84	106.68	4.200	104.14	4.100	71308-0084					71308-0584	71308-0284		71308-0684	71308-1184	71308-1284	84													
86	109.22	4.300	106.68	4.200	71308-0086					71308-0586	71308-0286		71308-0686	71308-1186	71308-1286	86													
88	111.76	4.400	109.22	4.300	71308-0088					71308-0588	71308-0288		71308-0688	71308-1188	71308-1288	88													
90	114.30	4.500	111.76	4.400	71308-0090					71308-0590	71308-0290		71308-0690	71308-1190	71308-1290	90													
92	116.84	4.600	114.30	4.500	71308-0092					71308-0592	71308-0292		71308-0692	71308-1192	71308-1292	92													
94	119.38	4.700	116.84	4.600	71308-0094					71308-0594	71308-0294		71308-0694	71308-1194	71308-1294	94													
96	121.92	4.800	119.38	4.700	71308-0096					71308-0596	71308-0296		71308-0696	71308-1196	71308-1296	96													
98	124.46	4.900	121.92	4.800	71308-0098					71308-0598	71308-0298		71308-0698	71308-1198	71308-1298	98													
100	127.00	5.000	124.46	4.900	71308-0101					71308-0600	71308-0300		71308-0700	71308-1200	71308-1300	100													

NO PEG VERSION
(SEE ALSO SHEET 3)

SEE SHEET 1 EC NO. 1 (EP2011-1028) DRWING IPER 2010/12/14 CHKD:JBL APPR:SMITH 2010/12/17 REV DESCRIPTION	QUALITY SYMBOLS	GENERAL TOLERANCES (UNLESS SPECIFIED)	DIMENSION STYLE	SCALE	DESIGN UNITS	THIRD ANGLE PROJECTION	
	▽=0 ▽=0	mm INCH	MM/IN	DRAWN BY DATE	INCH		
		4 PLACES ± --- ± --- 3 PLACES ± --- ± .005 2 PLACES ± 0.13 ± .010 1 PLACE ± 0.25 ± ---	KMS 1999/10/15 KMS 1999/10/15 KMS 1999/10/15	TITLE			
		ANGULAR ±1/2°	APPROVED BY DATE	SALES ASSY INSULATOR DUAL ROW SMT W/BREAK-OFF .025SQ PIN GULLWING .100			
	DRAFT WHERE APPLICABLE MUST REMAIN WITHIN DIMENSIONS	MATERIAL NO. DOCUMENT NO.	SEE TABLE	MOLEX INCORPORATED			
				SD-71308-001		SHEET NO. 2 OF 6	
						THIS DRAWING CONTAINS INFORMATION THAT IS PROPRIETARY TO MOLEX INCORPORATED AND SHOULD NOT BE USED WITHOUT WRITTEN PERMISSION	

		13	12	11	10	9	8	7	6	5	4	3	2	1		
		IN TAPE AND REEL WITH SHALLOW POCKET TAPE										BULK / IN TUBES				
J	PACKAGING SEE NOTE 4, SHT 1	4-8 CKT		TAPE-N-REEL W/ VAC CAPS		TAPE-N-REEL W/ VAC CAPS						BULK		BULK		
		10-100 CKT		TAPE-N-REEL W/ VAC CAPS		TAPE-N-REEL W/ VAC CAPS						TUBES		TUBES		
		DIM. M ±0.25 MM		6.10 (.240)		6.10 (.240)						8.13 (.320)		13.59 (.535)		
		PLATING		30 GOLD		15 GOLD						150 TIN		150 TIN		
		DIM. H		2.54 (.100)		2.54 (.100)						4.57 (.180)		4.57 (.180)		
		DIM. J		5.08 (.200)		5.08 (.200)						7.11 (.280)		7.11 (.280)		
I	CKTS	DIM. A		DIM. B		EDP NUMBER		EDP NUMBER				EDP NUMBER		EDP NUMBER		CKTS
		MM	IN	MM	IN											
	04	5.08	.200	2.54	.100											04
	06	7.62	.300	5.08	.200			015-91-6068								06
	08	10.16	.400	7.62	.300			015-91-6088								08
	10	12.70	.500	10.16	.400			015-91-6108				713088010		71308-8210		10
	12	15.24	.600	12.70	.500											12
	14	17.78	.700	15.24	.600	015-91-6148										14
	16	20.32	.800	17.78	.700							713088016				16
	18	22.86	.900	20.32	.800											18
	20	25.40	1.000	22.86	.900											20
	22	27.94	1.100	25.40	1.000											22
	24	30.48	1.200	27.94	1.100											24
	26	33.02	1.300	30.48	1.200											26
	28	35.56	1.400	33.02	1.300											28
	30	38.10	1.500	35.56	1.400											30
	32	40.64	1.600	38.10	1.500											32
	34	43.18	1.700	40.64	1.600											34
	36	45.72	1.800	43.18	1.700											36
	38	48.26	1.900	45.72	1.800											38
	40	50.80	2.000	48.26	1.900											40
	42	53.34	2.100	50.80	2.000											42
	44	55.88	2.200	53.34	2.100											44
	46	58.42	2.300	55.88	2.200											46
	48	60.96	2.400	58.42	2.300											48
	50	63.50	2.500	60.96	2.400											50
	52	66.04	2.600	63.50	2.500											52
	54	68.58	2.700	66.04	2.600											54
	56	71.12	2.800	68.58	2.700											56
	58	73.66	2.900	71.12	2.800											58
	60	76.20	3.000	73.66	2.900											60
	62	78.74	3.100	76.20	3.000											62
	64	81.28	3.200	78.74	3.100											64
	66	83.82	3.300	81.28	3.200											66
	68	86.36	3.400	83.82	3.300											68
	70	88.90	3.500	86.36	3.400											70
	72	91.44	3.600	88.90	3.500											72
	74	93.98	3.700	91.44	3.600											74
	76	96.52	3.800	93.98	3.700											76
	78	99.06	3.900	96.52	3.800											78
	80	101.60	4.000	99.06	3.900											80
	82	104.14	4.100	101.60	4.000											82
	84	106.68	4.200	104.14	4.100											84
	86	109.22	4.300	106.68	4.200											86
	88	111.76	4.400	109.22	4.300											88
	90	114.30	4.500	111.76	4.400											90
	92	116.84	4.600	114.30	4.500											92
	94	119.38	4.700	116.84	4.600											94
	96	121.92	4.800	119.38	4.700											96
	98	124.46	4.900	121.92	4.800											98
	100	127.00	5.000	124.46	4.900											100

NO PEG VERSION
(ALSO SEE SHEET 2)

SEE SHEET 1 EC NO. UEP2011-1028 DRAWN: IPER 2010/12/14 CHKD: JEBELL APPR: F SMITH 2010/12/17 DESCRIPTION REV	QUALITY SYMBOLS	GENERAL TOLERANCES (UNLESS SPECIFIED)	DIMENSION STYLE	SCALE	DESIGN UNITS	THIRD ANGLE PROJECTION															
	$\nabla=0$ $\nabla=0$	<table border="1"> <tr><th></th><th>mm</th><th>INCH</th></tr> <tr><td>4 PLACES</td><td>±---</td><td>±---</td></tr> <tr><td>3 PLACES</td><td>±---</td><td>±.005</td></tr> <tr><td>2 PLACES</td><td>±0.13</td><td>±.010</td></tr> <tr><td>1 PLACE</td><td>±0.25</td><td>±---</td></tr> </table>		mm	INCH	4 PLACES	±---	±---	3 PLACES	±---	±.005	2 PLACES	±0.13	±.010	1 PLACE	±0.25	±---	MM/IN	INCH	INCH	
		mm	INCH																		
	4 PLACES	±---	±---																		
3 PLACES	±---	±.005																			
2 PLACES	±0.13	±.010																			
1 PLACE	±0.25	±---																			
	ANGULAR ±1/2°	DRAWN BY DATE	TITLE																		
	DRAFT WHERE APPLICABLE MUST REMAIN WITHIN DIMENSIONS	KMS 1999/10/15	SALES ASSY INSULATOR DUAL ROW SMT W/BREAK-OFF .025SQ PIN GULLWING .100																		
		CHECKED BY DATE	MOLEX INCORPORATED																		
		KMS 1999/10/15																			
		APPROVED BY DATE	MATERIAL NO. DOCUMENT NO.		SHEET NO.																
		KMS 1999/10/15	SEE TABLE SD-71308-001		3 OF 6																
			THIS DRAWING CONTAINS INFORMATION THAT IS PROPRIETARY TO MOLEX INCORPORATED AND SHOULD NOT BE USED WITHOUT WRITTEN PERMISSION																		

		13		12		11		10		9		8		7		6		5		4		3		2		1	
		PACKAGING SEE NOTE 4 SHT 1		4-8 CKT		BULK		TAPE-N-REEL W/ VAC CAPS		BULK		TAPE-N-REEL W/ VAC CAPS		BULK		TAPE-N-REEL W/ VAC CAPS		BULK		BULK		BULK					
				10-100 CKT		TUBES		TAPE-N-REEL W/ VAC CAPS		TUBES		TAPE-N-REEL W/ VAC CAPS		TUBES		TAPE-N-REEL W/ VAC CAPS		TUBES		TUBES		TUBES					
		DIM. M+0.25 MM		6.10 (.240)		6.10 (.240)		6.10 (.240)		8.13 (.320)		8.13 (.320)		8.13 (.320)		30 GOLD		150 TIN		150 TIN		30 GOLD					
		DIM. H		2.54 (.100)		2.54 (.100)		2.54 (.100)		2.54 (.100)		4.57 (.180)		4.57 (.180)		4.57 (.180)		4.57 (.180)		4.57 (.180)		4.57 (.180)					
		DIM. J		5.08 (.200)		5.08 (.200)		5.08 (.200)		5.08 (.200)		7.11 (.280)		7.11 (.280)		7.11 (.280)		7.11 (.280)		7.11 (.280)		7.11 (.280)					
CKTS	DIM. A		DIM. B		DIM. C		EDP NUMBER		EDP NUMBER		EDP NUMBER		EDP NUMBER		EDP NUMBER		EDP NUMBER		EDP NUMBER		EDP NUMBER		EDP NUMBER		EDP NUMBER		CKTS
	MM	IN	MM	IN	MM	IN																					
04	5.08	.200	2.54	.100	---	---	015-91-1041	015-91-6044	015-91-1042	015-91-6045	015-91-1043	015-91-6046	015-91-1044	015-91-0047	015-91-1040	04											
06	7.62	.300	5.08	.200	2.54	.100	015-91-1061	015-91-6064	015-91-1062	015-91-6065	015-91-1063	015-91-6066	015-91-1064	015-91-0067	015-91-1060	06											
08	10.16	.400	7.62	.300	5.08	.200	015-91-1081	015-91-6084	015-91-1082	015-91-6085	015-91-1083	015-91-6086	015-91-1084	015-91-0087	015-91-1080	08											
10	12.70	.500	10.16	.400	7.62	.300	015-91-1101	015-91-6104	015-91-1102	015-91-6105	015-91-1103	015-91-6106	015-91-1104	015-91-0107	015-91-1100	10											
12	15.24	.600	12.70	.500	10.16	.400	015-91-1121	015-91-6124	015-91-1122	015-91-6125	015-91-1123	015-91-6126	015-91-1124	015-91-0127	015-91-1120	12											
14	17.78	.700	15.24	.600	12.70	.500	015-91-1141	015-91-6144	015-91-1142	015-91-6145	015-91-1143	015-91-6146	015-91-1144	015-91-0147	015-91-1140	14											
16	20.32	.800	17.78	.700	15.24	.600	015-91-1161	015-91-6164	015-91-1162	015-91-6165	015-91-1163	015-91-6166	015-91-1164	015-91-0167	015-91-1160	16											
18	22.86	.900	20.32	.800	17.78	.700	015-91-1181	015-91-6184	015-91-1182	015-91-6185	015-91-1183	015-91-6186	015-91-1184	015-91-0187	015-91-1180	18											
20	25.40	1.000	22.86	.900	20.32	.800	015-91-1201	015-91-6204	015-91-1202	015-91-6205	015-91-1203	015-91-6206	015-91-1204	015-91-0207	015-91-1200	20											
22	27.94	1.100	25.40	1.000	22.86	.900	015-91-1221	015-91-6224	015-91-1222	015-91-6225	015-91-1223	015-91-6226	015-91-1224	015-91-0227	015-91-1220	22											
24	30.48	1.200	27.94	1.100	25.40	1.000	015-91-1241	015-91-6244	015-91-1242	015-91-6245	015-91-1243	015-91-6246	015-91-1244	015-91-0247	015-91-1240	24											
26	33.02	1.300	30.48	1.200	27.94	1.100	015-91-1261	015-91-6264	015-91-1262	015-91-6265	015-91-1263	015-91-6266	015-91-1264	015-91-0267	015-91-1260	26											
28	35.56	1.400	33.02	1.300	30.48	1.200	015-91-1281	015-91-6284	015-91-1282	015-91-6285	015-91-1283	015-91-6286	015-91-1284	015-91-0287	015-91-1280	28											
30	38.10	1.500	35.56	1.400	33.02	1.300	015-91-1301	015-91-6304	015-91-1302	015-91-6305	015-91-1303	015-91-6306	015-91-1304	015-91-0307	015-91-1300	30											
32	40.64	1.600	38.10	1.500	35.56	1.400	015-91-1321	015-91-6324	015-91-1322	015-91-6325	015-91-1323	015-91-6326	015-91-1324	015-91-0327	015-91-1320	32											
34	43.18	1.700	40.64	1.600	38.10	1.500	015-91-1341	015-91-6344	015-91-1342	015-91-6345	015-91-1343	015-91-6346	015-91-1344	015-91-0347	015-91-1340	34											
36	45.72	1.800	43.18	1.700	40.64	1.600	015-91-1361	015-91-6364	015-91-1362	015-91-6365	015-91-1363	015-91-6366	015-91-1364	015-91-0367	015-91-1360	36											
38	48.26	1.900	45.72	1.800	43.18	1.700	015-91-1381	015-91-6384	015-91-1382	015-91-6385	015-91-1383	015-91-6386	015-91-1384	015-91-0387	015-91-1380	38											
40	50.80	2.000	48.26	1.900	45.72	1.800	015-91-1401	015-91-6404	015-91-1402	015-91-6405	015-91-1403	015-91-6406	015-91-1404	015-91-0407	015-91-1400	40											
42	53.34	2.100	50.80	2.000	48.26	1.900	015-91-1421	015-91-6424	015-91-1422	015-91-6425	015-91-1423	015-91-6426	015-91-1424	015-91-0427	015-91-1420	42											
44	55.88	2.200	53.34	2.100	50.80	2.000	015-91-1441	015-91-6444	015-91-1442	015-91-6445	015-91-1443	015-91-6446	015-91-1444	015-91-0447	015-91-1440	44											
46	58.42	2.300	55.88	2.200	53.34	2.100	015-91-1461	015-91-6464	015-91-1462	015-91-6465	015-91-1463	015-91-6466	015-91-1464	015-91-0467	015-91-1460	46											
48	60.96	2.400	58.42	2.300	55.88	2.200	015-91-1481	015-91-6484	015-91-1482	015-91-6485	015-91-1483	015-91-6486	015-91-1484	015-91-0487	015-91-1480	48											
50	63.50	2.500	60.96	2.400	58.42	2.300	015-91-1501	015-91-6504	015-91-1502	015-91-6505	015-91-1503	015-91-6506	015-91-1504	015-91-0507	015-91-1500	50											
52	66.04	2.600	63.50	2.500	60.96	2.400	015-91-1521	015-91-6524	015-91-1522	015-91-6525	015-91-1523	71308-5203	015-91-1524	015-91-0527	015-91-1520	52											
54	68.58	2.700	66.04	2.600	63.50	2.500	015-91-1541	015-91-6544	015-91-1542	015-91-6545	015-91-1543	015-91-6546	015-91-1544	015-91-0547	015-91-1540	54											
56	71.12	2.800	68.58	2.700	66.04	2.600	015-91-1561	015-91-6564	015-91-1562	015-91-6565	015-91-1563	015-91-6566	015-91-1564	015-91-0567	015-91-1560	56											
58	73.66	2.900	71.12	2.800	68.58	2.700	015-91-1581	015-91-6584	015-91-1582	015-91-6585	015-91-1583	015-91-6586	015-91-1584	015-91-0587	015-91-1580	58											
60	76.20	3.000	73.66	2.900	71.12	2.800	015-91-1601	015-91-6604	015-91-1602	015-91-6605	015-91-1603	015-91-6606	015-91-1604	015-91-0607	015-91-1600	60											
62	78.74	3.100	76.20	3.000	73.66	2.900	015-91-1621	015-91-6624	015-91-1622	015-91-6625	015-91-1623	015-91-6626	015-91-1624	015-91-0627	015-91-1620	62											
64	81.28	3.200	78.74	3.100	76.20	3.000	015-91-1641	015-91-6644	015-91-1642	015-91-6645	015-91-1643	015-91-6646	015-91-1644	015-91-0647	015-91-1640	64											
66	83.82	3.300	81.28	3.200	78.74	3.100	015-91-1661	015-91-6664	015-91-1662	015-91-6665	015-91-1663	015-91-6666	015-91-1664	015-91-0667	015-91-1660	66											
68	86.36	3.400	83.82	3.300	81.28	3.200	015-91-1681	015-91-6684	015-91-1682	015-91-6685	015-91-1683	015-91-6686	015-91-1684	015-91-0687	015-91-1680	68											
70	88.90	3.500	86.36	3.400	83.82	3.300	015-91-1701	015-91-6704	015-91-1702	015-91-6705	015-91-1703	015-91-6706	015-91-1704	015-91-0707	015-91-1700	70											
72	91.44	3.600	88.90	3.500	86.36	3.400	015-91-1721	015-91-6724	015-91-1722	015-91-6725	015-91-1723	015-91-6726	015-91-1724	015-91-0727	015-91-1720	72											
74	93.98	3.700	91.44	3.600	88.90	3.500	015-91-1741	015-91-6744	015-91-1742	015-91-6745	015-91-1743	015-91-6746	015-91-1744	015-91-0747	015-91-1740	74											
76	96.52	3.800	93.98	3.700	91.44	3.600	015-91-1761	015-91-6764	015-91-1762	015-91-6765	015-91-1763	015-91-6766	015-91-1764	015-91-0767	015-91-1760	76											
78	99.06	3.900	96.52	3.800	93.98	3.700	015-91-1781	015-91-6784	015-91-1782	015-91-6785	015-91-1783	015-91-6786	015-91-1784	015-91-0787	015-91-1780	78											
80	101.60	4.000	99.06	3.900	96.52	3.800	015-91-1801	015-91-6804	015-91-1802	015-91-6805	015-91-1803	015-91-6806	015-91-1804	015-91-0807	015-91-1800	80											
82	104.14	4.100	101.60	4.000	99.06	3.900	71308-4082	71308-4082	71308-4182	71308-4182	71308-4282	71308-4282	71308-5082	71308-5182	71308-5282	82											
84	106.68	4.200	104.14	4.100	101.60	4.000	71308-4084	71308-4084	71308-4184	71308-4184	71308-4284	71308-4284	71308-5084	71308-5184	71308-5284	84											
86	109.22	4.300	106.68	4.200	104.14	4.100	71308-4086	71308-4086	71308-4186	71308-4186	71308-4286	71308-4286	71308-5086	71308-5186	71308-5286	86											
88	111.76	4.400	109.22	4.300	106.68	4.200	71308-4088	71308-4088	71308-4188	71308-4188	71308-4288	71308-4288	71308-5088	71308-5188	71308-5288	88											
90	114.30	4.500	111.76	4.400	109.22	4.300	71308-4090	71308-4090	71308-4190	71308-4190	71308-4290	71308-4290	71308-5090	71308-5190	71308-5290	90											
92	116.84	4.600	114.30	4.500	111.76	4.400	71308-4092	71308-4092	71308-4192	71308-4192	71308-4292	71308-4292	71308-5092	71308-5192	71308-5292	92											
94	119.38	4.700	116.84	4.600	114.30	4.500	71308-4094	71308-4094	71308-4194	71308-4194	71308-4294	71308-4294	71308-5094	71308-5194	71308-5294	94											
96	121.92	4.800	119.38	4.700	116.84	4.600	71308-4096	71308-4096	71308-4196	71308-4196	71308-4296	71308-4296	71308-5096	71308-5196	71308-5296	96											
98	124.46	4.900	121.92	4.800	119.38	4.700	71308-4098	71308-4098	71308-4198	71308-4198	71308-4298	71308-4298	71308-5098	71308-5198	71308-5298	98											
100	127.00	5.000	124.46	4.900	121.92	4.800	71308-4100	71308-4100	71308-4200	71308-4200	71308-4300	71308-4300	71308-5100	71308-5200	71308-5300	100											

	13	12	11	10	9	8	7	6	5	4	3	2	1	
J	PACKAGING SEE NOTE 4 SHT 1			4-8 CKT	BULK	TAPE-N-REEL W/ VAC CAPS	BULK	TAPE-N-REEL W/ VAC CAPS						
				10-100 CKT	TUBES	TAPE-N-REEL W/ VAC CAPS	TUBES	TAPE-N-REEL W/ VAC CAPS						
	DIM. M ±0.25 MM			6.10 (.240)			6.10 (.240)							
	PLATING			30 GOLD			150 TIN							
	DIM. H			2.54 (.100)			2.54 (.100)							
	DIM. J			5.08 (.200)			5.08 (.200)							
I	CKTS	DIM. A		DIM. B		DIM. C		EDP NUMBER	EDP NUMBER	EDP NUMBER	EDP NUMBER	EDP NUMBER	EDP NUMBER	CKTS
		MM	IN	MM	IN	MM	IN							
	04	5.08	.200	2.54	.100	----	----	015-91-1048	015-91-6047					04
	06	7.62	.300	5.08	.200	2.54	.100	015-91-1068	015-91-6067	71308-6106	71308-6206			06
	08	10.16	.400	7.62	.300	5.08	.200	015-91-1088	015-91-6087	71308-6108	71308-6208			08
	10	12.70	.500	10.16	.400	7.62	.300	015-91-1108	015-91-6107	71308-6110	71308-6210			10
	12	15.24	.600	12.70	.500	10.16	.400	015-91-1128						12
	14	17.78	.700	15.24	.600	12.70	.500	015-91-1148	015-91-6147					14
	16	20.32	.800	17.78	.700	15.24	.600	015-91-1168	015-91-6167					16
	18	22.86	.900	20.32	.800	17.78	.700	015-91-1188						18
	20	25.40	1.000	22.86	.900	20.32	.800	015-91-1208	015-91-6207					20
	22	27.94	1.100	25.40	1.000	22.86	.900	015-91-1228						22
	24	30.48	1.200	27.94	1.100	25.40	1.000	015-91-1248						24
	26	33.02	1.300	30.48	1.200	27.94	1.100	015-91-1268		71308-6126				26
	28	35.56	1.400	33.02	1.300	30.48	1.200	015-91-1288						28
	30	38.10	1.500	35.56	1.400	33.02	1.300	015-91-1308						30
	32	40.64	1.600	38.10	1.500	35.56	1.400	015-91-1328						32
	34	43.18	1.700	40.64	1.600	38.10	1.500	015-91-1348						34
	36	45.72	1.800	43.18	1.700	40.64	1.600	015-91-1368						36
	38	48.26	1.900	45.72	1.800	43.18	1.700	015-91-1388						38
	40	50.80	2.000	48.26	1.900	45.72	1.800	015-91-1408	015-91-6407					40
	42	53.34	2.100	50.80	2.000	48.26	1.900	015-91-1428						42
	44	55.88	2.200	53.34	2.100	50.80	2.000	015-91-1448						44
	46	58.42	2.300	55.88	2.200	53.34	2.100	015-91-1468						46
	48	60.96	2.400	58.42	2.300	55.88	2.200	015-91-1488						48
	50	63.50	2.500	60.96	2.400	58.42	2.300	015-91-1508	015-91-6507					50
	52	66.04	2.600	63.50	2.500	60.96	2.400	015-91-1528						52
	54	68.58	2.700	66.04	2.600	63.50	2.500	015-91-1548						54
	56	71.12	2.800	68.58	2.700	66.04	2.600	015-91-1568						56
	58	73.66	2.900	71.12	2.800	68.58	2.700	015-91-1588						58
	60	76.20	3.000	73.66	2.900	71.12	2.800	015-91-1608						60
	62	78.74	3.100	76.20	3.000	73.66	2.900	015-91-1628						62
	64	81.28	3.200	78.74	3.100	76.20	3.000	015-91-1648						64
	66	83.82	3.300	81.28	3.200	78.74	3.100	015-91-1668						66
	68	86.36	3.400	83.82	3.300	81.28	3.200	015-91-1688						68
	70	88.90	3.500	86.36	3.400	83.82	3.300	015-91-1708						70
	72	91.44	3.600	88.90	3.500	86.36	3.400	015-91-1728						72
	74	93.98	3.700	91.44	3.600	88.90	3.500	015-91-1748						74
	76	96.52	3.800	93.98	3.700	91.44	3.600	015-91-1768						76
	78	99.06	3.900	96.52	3.800	93.98	3.700	015-91-1788						78
	80	101.60	4.000	99.06	3.900	96.52	3.800	015-91-1808						80
	82	104.14	4.100	101.60	4.000	99.06	3.900	71308-6082						82
	84	106.68	4.200	104.14	4.100	101.60	4.000	71308-6084						84
	86	109.22	4.300	106.68	4.200	104.14	4.100	71308-6086						86
	88	111.76	4.400	109.22	4.300	106.68	4.200	71308-6088						88
	90	114.30	4.500	111.76	4.400	109.22	4.300	71308-6090						90
	92	116.84	4.600	114.30	4.500	111.76	4.400	71308-6092						92
	94	119.38	4.700	116.84	4.600	114.30	4.500	71308-6094						94
	96	121.92	4.800	119.38	4.700	116.84	4.600	71308-6096						96
	98	124.46	4.900	121.92	4.800	119.38	4.700	71308-6098						98
	100	127.00	5.000	124.46	4.900	121.92	4.800	71308-6100						100

SHORT PEG VERSION (.055")

SEE SHEET 1 EC NO: UCP2011-1028 DRAWN: PPR 2010/12/14 CHKD: JELL 2010/12/17 APPR: ESM:TH	QUALITY SYMBOLS	GENERAL TOLERANCES (UNLESS SPECIFIED)	DIMENSION STYLE	SCALE	DESIGN UNITS	THIRD ANGLE PROJECTION
	$\nabla=0$ $\nabla=0$	mm INCH 4 PLACES ±.005 ±.005 3 PLACES ±.010 ±.010 2 PLACES ±.025 ±.025 1 PLACE ±.050 ±.050 ANGULAR ±1/2°	MM/IN	INCH	INCH	
			DRAWN BY DATE	TITLE		
			KMS 1999/10/15	SALES ASSY INSULATOR DUAL ROW SMT W/BREAK-OFF .025SQ PIN GULLWING .100		
			CHECKED BY DATE			
			KMS 1999/10/15			
			APPROVED BY DATE			
			KMS 1999/10/15			
			MATERIAL NO.	DOCUMENT NO.		SHEET NO.
			SEE TABLE	SD-71308-001		5 OF 6
			THIS DRAWING CONTAINS INFORMATION THAT IS PROPRIETARY TO MOLEX INCORPORATED AND SHOULD NOT BE USED WITHOUT WRITTEN PERMISSION			

13 12 11 10 9 8 7 6 5 4 3 2 1

J

I

H

G

F

E

D

C

B

A

J

I

H

G

F

E

D

C

B

A

PEG OPTION

NO PEG VERSION

NO PEG VERSION

LONG PEG VERSION (.130")

SHORT PEG VERSION (.055")

PACKAGING SEE NOTE 4, SHT 1	4-6 CKT	BULK	TAPE-N-REEL W/VAC CAPS	N/A	4-8 CKT	TAPE-N-REEL W/VAC CAPS	BULK	BULK	BULK	TAPE-N-REEL W/VAC CAPS	BULK	BULK	TAPE-N-REEL W/VAC CAPS
	8-100 CKT	TUBES	TAPE-N-REEL W/VAC CAPS	TUBES W/ VAC CAPS	10-100 CKT	TAPE-N-REEL W/VAC CAPS	TUBES	TUBES	TUBES	TAPE-N-REEL W/VAC CAPS	TUBES	BULK	TAPE-N-REEL W/ VAC CAPS

DIM. M±0.25 MM	6.10 (.240)	8.13(.320)	13.59(.535)	6.10(.240)	8.13(.320)	6.10 (.240)
PLATING	59 TIN	59 TIN	59 TIN	59 TIN	59 TIN	59 TIN
DIM. H	2.54(.100)	4.57(.180)	4.57(.180)	2.54(.100)	4.57(.180)	2.54(.100)
DIM. J	5.08(.200)	7.11(.280)	7.11(.280)	5.08(.200)	7.11(.280)	5.08(.200)

CKTS	DIM. A		DIM. B		DIM. C		EDP NUMBER	EDP NUMBER	EDP NUMBER	EDP NUMBER	EDP NUMBER	EDP NUMBER	EDP NUMBER	EDP NUMBER	EDP NUMBER	EDP NUMBER	EDP NUMBER	CKTS	
	MM	IN	MM	IN	MM	IN													
04	5.08	.200	2.54	.100	---	---	71308-5404	71308-5504	N/A				71308-6404	71308-6504	71308-6604			04	
06	7.62	.300	5.08	.200	2.54	.100	71308-5406	71308-5506	N/A				71308-6406	71308-6506	71308-6606	71308-6706	71308-6806	06	
08	10.16	.400	7.62	.300	5.08	.200	71308-5408	71308-5508	71308-5608				71308-6408	71308-6508	71308-6608	71308-6708	71308-6808	08	
10	12.70	.500	10.16	.400	7.62	.300	71308-5410	71308-5510	71308-5610			71308-5810	71308-5910	71308-6410	71308-6510	71308-6610	71308-6710	71308-6810	10
12	15.24	.600	12.70	.500	10.16	.400	71308-5412	71308-5512	71308-5612					71308-6412	71308-6512	71308-6612			12
14	17.78	.700	15.24	.600	12.70	.500	71308-5414	71308-5514	71308-5614					71308-6414	71308-6514	71308-6614			14
16	20.32	.800	17.78	.700	15.24	.600	71308-5416	71308-5516	71308-5616			71308-5816		71308-6416	71308-6516	71308-6616			16
18	22.86	.900	20.32	.800	17.78	.700	71308-5418		71308-5618					71308-6418		71308-6618			18
20	25.40	1.000	22.86	.900	20.32	.800	71308-5420	71308-5520	71308-5620					71308-6420		71308-6620			20
22	27.94	1.100	25.40	1.000	22.86	.900	71308-5422		71308-5622					71308-6422		71308-6622			22
24	30.48	1.200	27.94	1.100	25.40	1.000	71308-5424		71308-5624			71308-5724	71308-5824	71308-6424		71308-6624			24
26	33.02	1.300	30.48	1.200	27.94	1.100	71308-5426		71308-5626					71308-6426		71308-6626	71308-6726		26
28	35.56	1.400	33.02	1.300	30.48	1.200	71308-5428		71308-5628					71308-6428		71308-6628			28
30	38.10	1.500	35.56	1.400	33.02	1.300	71308-5430		71308-5630					71308-6430		71308-6630			30
32	40.64	1.600	38.10	1.500	35.56	1.400	71308-5432		71308-5632					71308-6432		71308-6632			32
34	43.18	1.700	40.64	1.600	38.10	1.500	71308-5434		71308-5634					71308-6434		71308-6634			34
36	45.72	1.800	43.18	1.700	40.64	1.600	71308-5436		71308-5636					71308-6436		71308-6636			36
38	48.26	1.900	45.72	1.800	43.18	1.700	71308-5438		71308-5638					71308-6438		71308-6638			38
40	50.80	2.000	48.26	1.900	45.72	1.800	71308-5440	71308-5540	71308-5640					71308-6440		71308-6640			40
42	53.34	2.100	50.80	2.000	48.26	1.900	71308-5442		71308-5642					71308-6442		71308-6642			42
44	55.88	2.200	53.34	2.100	50.80	2.000	71308-5444		71308-5644					71308-6444		71308-6644			44
46	58.42	2.300	55.88	2.200	53.34	2.100	71308-5446		71308-5646					71308-6446		71308-6646			46
48	60.96	2.400	58.42	2.300	55.88	2.200	71308-5448		71308-5648					71308-6448		71308-6648			48
50	63.50	2.500	60.96	2.400	58.42	2.300	71308-5450	71308-5550	71308-5650					71308-6450	71308-6550	71308-6650			50
52	66.04	2.600	63.50	2.500	60.96	2.400	71308-5452		71308-5652					71308-6452		71308-6652			52
54	68.58	2.700	66.04	2.600	63.50	2.500	71308-5454		71308-5654					71308-6454		71308-6654			54
56	71.12	2.800	68.58	2.700	66.04	2.600	71308-5456		71308-5656					71308-6456		71308-6656			56
58	73.66	2.900	71.12	2.800	68.58	2.700	71308-5458		71308-5658					71308-6458		71308-6658			58
60	76.20	3.000	73.66	2.900	71.12	2.800	71308-5460		71308-5660					71308-6460		71308-6660			60
62	78.74	3.100	76.20	3.000	73.66	2.900	71308-5462		71308-5662					71308-6462		71308-6662			62
64	81.28	3.200	78.74	3.100	76.20	3.000	71308-5464		71308-5664					71308-6464		71308-6664			64
66	83.82	3.300	81.28	3.200	78.74	3.100	71308-5466		71308-5666					71308-6466		71308-6666			66
68	86.36	3.400	83.82	3.300	81.28	3.200	71308-5468		71308-5668					71308-6468		71308-6668			68
70	88.90	3.500	86.36	3.400	83.82	3.300	71308-5470		71308-5670					71308-6470		71308-6670			70
72	91.44	3.600	88.90	3.500	86.36	3.400	71308-5472		71308-5672					71308-6472		71308-6672			72
74	93.98	3.700	91.44	3.600	88.90	3.500	71308-5474		71308-5674					71308-6474		71308-6674			74
76	96.52	3.800	93.98	3.700	91.44	3.600	71308-5476		71308-5676					71308-6476		71308-6676			76
78	99.06	3.900	96.52	3.800	93.98	3.700	71308-5478		71308-5678					71308-6478		71308-6678			78
80	101.60	4.000	99.06	3.900	96.52	3.800	71308-5480		71308-5680					71308-6480		71308-6680			80
82	104.14	4.100	101.60	4.000	99.06	3.900	71308-5482		71308-5682					71308-6482		71308-6682			82
84	106.68	4.200	104.14	4.100	101.60	4.000	71308-5484		71308-5684					71308-6484		71308-6684			84
86	109.22	4.300	106.68	4.200	104.14	4.100	71308-5486		71308-5686					71308-6486		71308-6686			86
88	111.76	4.400	109.22	4.300	106.68	4.200	71308-5488		71308-5688					71308-6488		71308-6688			88
90	114.30	4.500	111.76	4.400	109.22	4.300	71308-5490		71308-5690					71308-6490		71308-6690			90
92	116.84	4.600	114.30	4.500	111.76	4.400	71308-5492		71308-5692					71308-6492		71308-6692			92
94	119.38	4.700	116.84	4.600	114.30	4.500	71308-5494		71308-5694					71308-6494		71308-6694			94
96	121.92	4.800	119.38	4.700	116.84	4.600	71308-5496		71308-5696					71308-6496		71308-6696			96
98	124.46	4.900	121.92	4.800	119.38	4.700	71308-5498		71308-5698					71308-6498		71308-6698			98
100	127.00	5.000	124.46	4.900	121.92	4.800	71308-5500		71308-5700					71308-6500		71308-6700			100

59 TIN PLATE ASSEMBLIES

SEE SHEET 1 EC NO. UCP2011-1028 DRAWN BY PPR 2010/12/14 CHKD: JBEL APPR: SMITH 2010/12/17 DESCRIPTION REV	QUALITY SYMBOLS	GENERAL TOLERANCES (UNLESS SPECIFIED)	DIMENSION STYLE	SCALE	DESIGN UNITS	THIRD ANGLE PROJECTION
	$\nabla=0$ $\nabla=0$	4 PLACES ±.005 ±.005 3 PLACES ±.005 ±.005 2 PLACES ±0.13 ±.010 1 PLACE ±0.25 ±.005 ANGULAR ±1/2°	MM/IN DRAWN BY DATE KMS 1999/10/15 CHECKED BY DATE KMS 1999/10/15 APPROVED BY DATE KMS 1999/10/15	1:1	INCH	SALES ASSY INSULATOR DUAL ROW SMT W/BREAK-OFF .025SQ PIN GULLWING .100 MOLEX INCORPORATED
	DRAFT WHERE APPLICABLE MUST REMAIN WITHIN DIMENSIONS	SEE TABLE	MATERIAL NO.	DOCUMENT NO.	SHEET NO.	
					6 OF 6	

12 11 10 9 8 7 6 5 4 3 2 1

lb_frame_C.P. AM.T
Rev. E 2006/04/15