

| CIRCUIT SIZE | DIM. 'A' | DIM. 'B' |
|--------------|----------------|----------------|
| 2 | .21 (5.4) | — |
| 4 | .38 (9.6) | .17 (4.2) |
| 6 | .54 (13.8) | .33 (8.4) |
| 8 | .71 (18.0) | .50 (12.6) |
| 10 | .87 (22.2) | .66 (16.8) |
| 12 | 1.04 (26.4) | .83 (21.0) |
| 14 | 1.20 (30.6) | .99 (25.2) |
| 16 | 1.37 (34.8) | 1.16 (29.4) |
| 18 | 1.54 (39.0) | 1.32 (33.6) |
| 20 | 1.70 (43.2) | 1.49 (37.8) |
| 22 | 1.87 (47.4) | 1.65 (42.0) |
| 24 | 2.03 (51.6) | 1.82 (46.2) |

LEGEND

BASE NUMBER 5566 - N * * * * *

CIRCUIT SIZE

ASS'Y TYPE
A : WITHOUT DRAIN HOLES
B : WITH DRAIN HOLES

TERMINAL MATERIAL
SEE NOTE 1

TERMINAL PLATING
SEE NOTE 2

HOUSING MATERIAL
SEE NOTE 1

COLOR OR PACKAGING
BL : BLACK RE : RED GR : GRAY
BU : BLUE YE : YELLOW GRE : GREEN
V : VIOLET OR : ORANGE
TA : TRAY PACKAGING SEE NOTE 4

NOTES:

1. MATERIALS:
HOUSING:
"BLANK"-NYLON 6/6, UL94V-2, COLOR: NATURAL
"210"-NYLON 6/6, UL94V-0, COLOR: NATURAL
"400"-NYLON 6/6, UL94V-0, COLOR: BLACK

TERMINALS:
"BLANK" = BRASS
"PB" = PHOSPHOR BRONZE

2. TERMINAL PLATING:
"BLANK" = BRIGHT TIN 0.00035/(0.00090) MIN.
OVER COPPER .00020/(0.00050) MIN. (BRASS)
TIN .00035/(0.00090) MIN. REFLOW TREATMENT
OR BRIGHT TIN .00035/(0.00090) MIN. (PHOSPHOR BRONZE)
"S"=.000100/(0.00254) MIN. BRIGHT TIN OVER
.000050/(0.00127) MIN. NICKEL
"GS2"=.00015/(0.00038) MIN. SELECT GOLD AND
.000100/(0.00254) MIN. SELECT MATTE TIN
OVER .000050/(0.00127) MIN. NICKEL OVERALL
"GS"=.00030/(0.00076) MIN. SELECT GOLD AND
.000100/(0.00254) MIN. SELECT MATTE TIN
OVER .000050/(0.00127) MIN. NICKEL OVERALL

3. PRODUCT SPECIFICATION: PS-5556-001

4. PACKAGING: "BLANK"= BULK PACKED, "TA"=TRAY PACK PER PK-5566-001

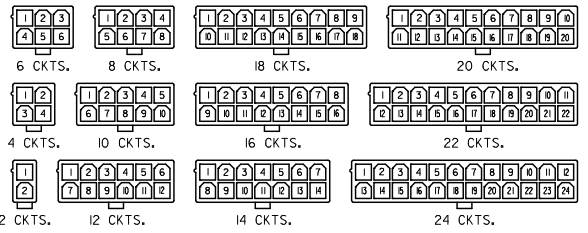
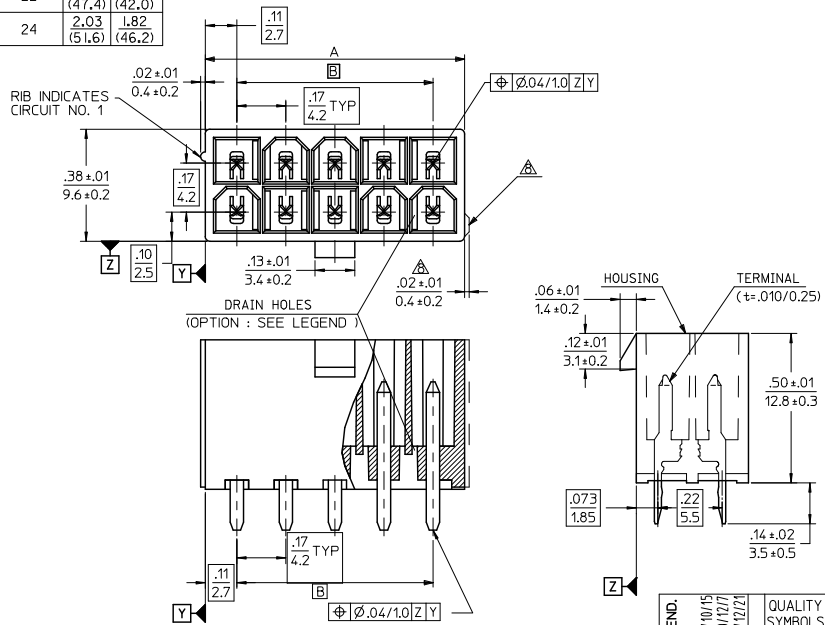
5. PART MATES WITH MINI-FIT JR. RECEPTACLE NO. 5557.

6. PART IS NOT DESIGNED FOR CURRENT SHARING.

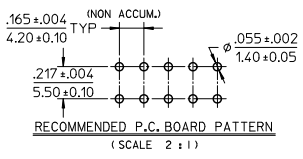
7. PARTS ARE NOT DESIGNED TO BE MATED OR UN-MATED WHILE CIRCUITS ARE LIVE.

8. ANTI-SHINGLING RIB MAY OR MAY NOT APPEAR ON HOUSINGS.

9. PART CONFORMS TO CLASS 'B' REQUIREMENTS OF COSMETIC SPECIFICATION PS-45499-002.



CIRCUIT SIZE LAYOUT



| | | | | | | |
|---|--------------------------------------|---|---|-------------------|--|--------------------------|
| ADD COLORS TO LEGEND: EC NO. UCP2011-1675 DRAWN: JAGUILAR 20/01/15 CHKD: BELL 20/01/17 APPROV: SMITH 20/01/21 | QUALITY SYMBOLS ▽=0 ▽=0 ▽=0 | GENERAL TOLERANCES (UNLESS SPECIFIED): | DIMENSION STYLE IN/MM | SCALE 4:1 | DESIGN UNITS METRIC | THIRD ANGLE PROJECTION |
| | | 4 PLACES ± .005 ± .005 3 PLACES ± .005 ± .005 2 PLACES ± .010 ± .010 1 PLACE ± .025 ± .025 ANGULAR ± 3° | DRAWN BY H. HIRAMOTO '89/04/03 | DATE '89/04/03 | TITLE NEW MINI FIT CONNECTOR HEADER HOUSING ASS'Y -LEAD FREE- | MATERIAL NO. SD-5566-002 |
| DRAFT WHERE APPLICABLE MUST REMAIN WITHIN DIMENSIONS | | SEE TABLE | THIS DRAWING CONTAINS INFORMATION THAT IS PROPRIETARY TO MOLEX INCORPORATED AND SHOULD NOT BE USED WITHOUT WRITTEN PERMISSION | | | |

| 10 | 9 | 8 | 7 | 6 | 5 | 4 | 3 | 2 | 1 | |
|---------------|----------------|----------------|-----------------|---------------|----------------|--------------|---------------|-------------|--------------|-----------|
| 39-29-5247 | 5566-24APB-210 | 39-30-9245 | 5566-24AGS2-210 | 39-29-6248 | 5566-24AGS-210 | 39-30-6242 | 5566-24AS-210 | 39-28-8240 | 5566-24A-210 | 24 |
| ▲ -5227 | ▲ -22APB-210 | ▲ -9225 | ▲ -22AGS2-210 | ▲ -6228 | ▲ -22AGS-210 | ▲ -6222 | ▲ -22AS-210 | ▲ -8220 | ▲ -22A-210 | 22 |
| -5207 | -20APB-210 | -9205 | -20AGS2-210 | -6208 | -20AGS-210 | -6202 | -20AS-210 | -8200 | -20A-210 | 20 |
| -5187 | -18APB-210 | -9185 | -18AGS2-210 | -6188 | -18AGS-210 | -6182 | -18AS-210 | -8180 | -18A-210 | 18 |
| -5167 | -16APB-210 | -9165 | -16AGS2-210 | -6168 | -16AGS-210 | -6162 | -16AS-210 | -8160 | -16A-210 | 16 |
| -5147 | -14APB-210 | -9145 | -14AGS2-210 | -6148 | -14AGS-210 | -6142 | -14AS-210 | -8140 | -14A-210 | 14 |
| -5127 | -12APB-210 | -9125 | -12AGS2-210 | -6128 | -12AGS-210 | -6122 | -12AS-210 | -8120 | -12A-210 | 12 |
| -5107 | -10APB-210 | -9105 | -10AGS2-210 | -6108 | -10AGS-210 | -6102 | -10AS-210 | -8100 | -10A-210 | 10 |
| -5087 | -08APB-210 | -9085 | -08AGS2-210 | -6088 | -08AGS-210 | -6082 | -08AS-210 | -8080 | -08A-210 | 8 |
| -5067 | -06APB-210 | -9065 | -06AGS2-210 | -6068 | -06AGS-210 | -6062 | -06AS-210 | -8060 | -06A-210 | 6 |
| ▼ -5047 | ▼ -04APB-210 | ▼ -9045 | ▼ -04AGS2-210 | ▼ -6048 | ▼ -04AGS-210 | ▼ -6042 | ▼ -04AS-210 | ▼ -8040 | ▼ -04A-210 | 4 |
| 39-29-5027 | 5566-02APB-210 | 39-30-9025 | 5566-02AGS2-210 | 39-29-6028 | 5566-02AGS-210 | 39-30-6022 | 5566-02AS-210 | 39-28-8020 | 5566-02A-210 | 2 |
| EDP NO. | ENG. NO. | EDP NO. | ENG. NO. | EDP NO. | ENG. NO. | EDP NO. | ENG. NO. | EDP NO. | ENG. NO. | CKT. SIZE |
| 5566-NAPB-210 | | 5566-NAGS2-210 | | 5566-NAGS-210 | | 5566-NAS-210 | | 5566-NA-210 | | |
| 39-29-5246 | 5566-24APB | 39-30-9244 | 5566-24AGS2 | 39-29-0243 | 5566-24AGS | 39-30-6241 | 5566-24AS | 39-28-1243 | 5566-24A | 24 |
| ▲ -5226 | ▲ -22APB | ▲ -9224 | ▲ -22AGS2 | ▲ -0223 | ▲ -22AGS | ▲ -6221 | ▲ -22AS | ▲ -1223 | ▲ -22A | 22 |
| -5206 | -20APB | -9204 | -20AGS2 | -0203 | -20AGS | -6201 | -20AS | -1203 | -20A | 20 |
| -5186 | -18APB | -9184 | -18AGS2 | -0183 | -18AGS | -6181 | -18AS | -1183 | -18A | 18 |
| -5166 | -16APB | -9164 | -16AGS2 | -0163 | -16AGS | -6161 | -16AS | -1163 | -16A | 16 |
| -5146 | -14APB | -9144 | -14AGS2 | -0143 | -14AGS | -6141 | -14AS | -1143 | -14A | 14 |
| -5126 | -12APB | -9124 | -12AGS2 | -0123 | -12AGS | -6121 | -12AS | -1123 | -12A | 12 |
| -5106 | -10APB | -9104 | -10AGS2 | -0103 | -10AGS | -6101 | -10AS | -1103 | -10A | 10 |
| -5086 | -08APB | -9084 | -08AGS2 | -0083 | -08AGS | -6081 | -08AS | -1083 | -08A | 8 |
| -5066 | -06APB | -9064 | -06AGS2 | -0063 | -06AGS | -6061 | -06AS | -1063 | -06A | 6 |
| ▼ -5046 | ▼ -04APB | ▼ -9044 | ▼ -04AGS2 | ▼ -0043 | ▼ -04AGS | ▼ -6041 | ▼ -04AS | ▼ -1043 | ▼ -04A | 4 |
| 39-29-5026 | 5566-02APB | 39-30-9024 | 5566-02AGS2 | 39-29-0023 | 5566-02AGS | 39-30-6021 | 5566-02AS | 39-28-1023 | 5566-02A | 2 |
| EDP NO. | ENG. NO. | EDP NO. | ENG. NO. | EDP NO. | ENG. NO. | EDP NO. | ENG. NO. | EDP NO. | ENG. NO. | CKT. SIZE |
| 5566-NAPB | | 5566-NAGS2 | | 5566-NAGS | | 5566-NAS | | 5566-NA | | |

PARTS WITH OUT DRAIN HOLES

| | | | | | | |
|--|---------------------------------------|---------------------------|-----------------------------|---|--|---------------------------|
| REVISED EC NO: UCP2010-1083 DRW: JAGUILAR 2010/02/05 CHKD: BELL 2010/02/08 APPR: SMITH 2010/02/10 L2 REV | GENERAL TOLERANCES (UNLESS SPECIFIED) | | DIMENSION STYLE IN/MM | SCALE --- | DESIGN UNITS METRIC | THIRD ANGLE PROJECTION |
| | 10 UNDER | ± --- | DRAWN BY H. HIRAMOTO | DATE '89/04/03 | TITLE NEW MINI FIT CONNECTOR HEADER HOUSING ASS'Y -LEAD FREE- | |
| | 10 OVER 30 UNDER | ± --- | CHECKED BY M. FUKUSHIMA | DATE '94/04/20 | MOLEX INCORPORATED | |
| | 30 OVER | ± --- | APPROVED BY M. FUKUSHIMA | DATE '94/04/20 | DOCUMENT NO. SD-5566-002 | SHEET NO. 2 OF 6 |
| ANGULAR ± --- ° | | MATERIAL NO. SEE TABLE | | THIS DRAWING CONTAINS INFORMATION THAT IS PROPRIETARY TO MOLEX INCORPORATED AND SHOULD NOT BE USED WITHOUT WRITTEN PERMISSION | | |
| DRAFT WHERE APPLICABLE MUST REMAIN WITHIN DIMENSIONS | | | | | | |